

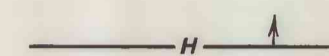
STRUCTURE CONTOURS—Drawn on top of coal bed. Solid where vertical accuracy within 25 feet; long dashed where vertical accuracy possibly not within 25 feet; short dashed where projected above land surface. Contour interval is 50 feet (15.2 m). Datum is mean sea level.

7736
○

DRILL HOLE—Showing altitude of top of coal bed, in feet. Drill holes which did not intersect top of coal bed or from which bed altitude could not be determined, are not shown.

7407
▲

POINT OF MEASUREMENT—Showing altitude of top of coal bed, in feet.

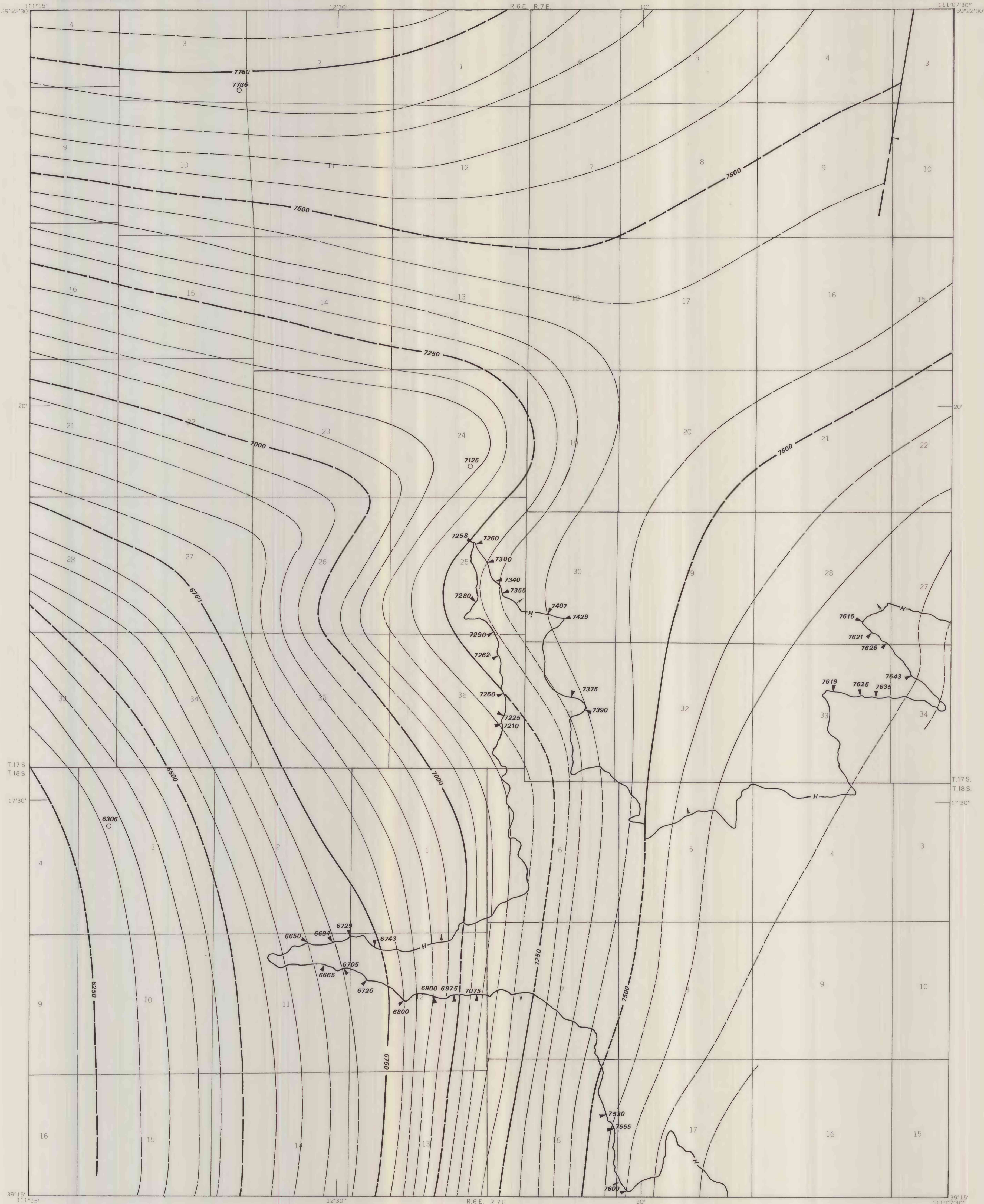


TRACE OF COAL BED OUTCROP—Showing symbol of name of coal bed. Arrow points toward coal-bearing area.

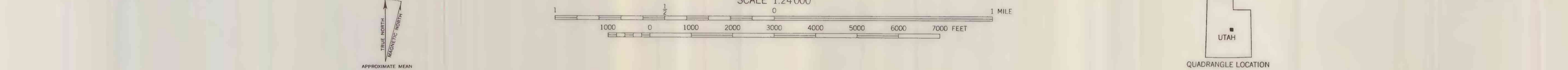


FAULT—Dashed where approximately located; bar and ball on downthrown side.

To convert feet to meters, multiply feet by 0.3048.



Base from U.S. Geological Survey, 1923



**COAL RESOURCE OCCURRENCE MAP OF THE SOUTHWEST QUARTER OF THE
HIAWATHA 15-MINUTE QUADRANGLE,
EMERY COUNTY, UTAH**

**BY
AAA ENGINEERING AND DRAFTING, INC.
1979**

**PLATE 5
STRUCTURE CONTOUR MAP
OF THE
HIAWATHA COAL BED**

This report has not been edited for conformity with Geological Survey editorial standards or stratigraphic nomenclature.