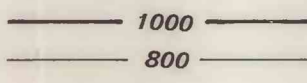
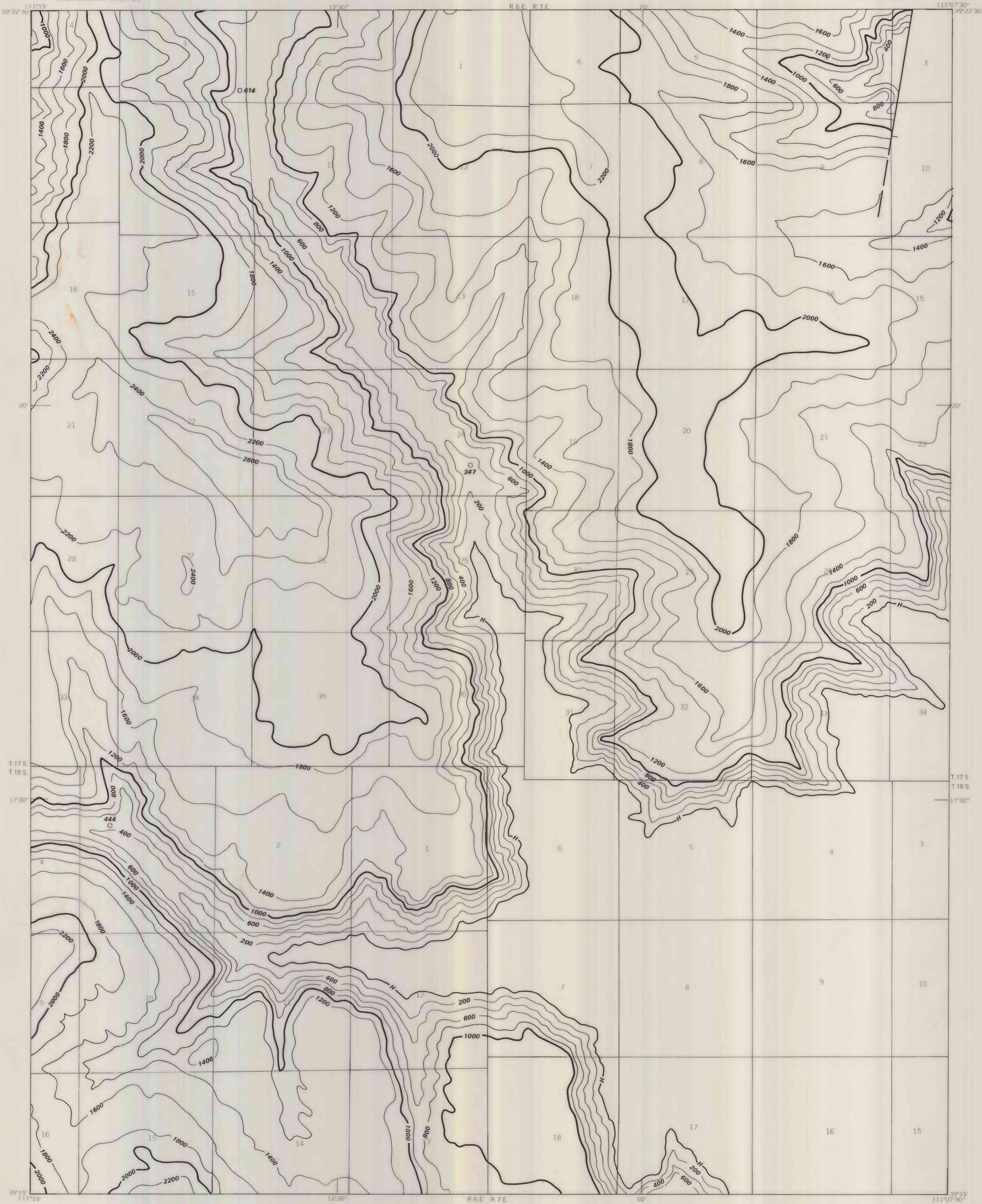
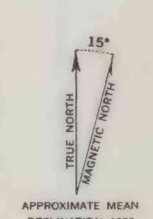


-  1000  
800
- OVERBURDEN ISOPACHS - Showing thickness of overburden, in feet, from the surface to top of the Hiawatha coal bed. Isopach interval 200 feet (61.0 m).
- 347 ○
- DRILL HOLE - Showing thickness of overburden, in feet, from the surface to top of the Hiawatha coal bed.
- H
- TRACE OF COAL BED OUTCROP - Showing symbol of name of coal bed.
- |—
- FAULT - Dashed where approximately located, bar and ball on downthrown side.
- To convert feet to meters, multiply feet by 0.3048



Base from U.S. Geological Survey, 1923

Compiled in 1978



This report has not been edited for conformity with Geological Survey editorial standards or stratigraphic nomenclature.

**COAL RESOURCE OCCURRENCE MAP OF THE SOUTHWEST QUARTER OF THE  
HIAWATHA 15-MINUTE QUADRANGLE,  
EMERY COUNTY, UTAH**

**BY  
AAA ENGINEERING AND DRAFTING, INC.  
1979**

**PLATE 6  
OVERBURDEN ISOPACH MAP  
OF THE  
HIAWATHA COAL BED**