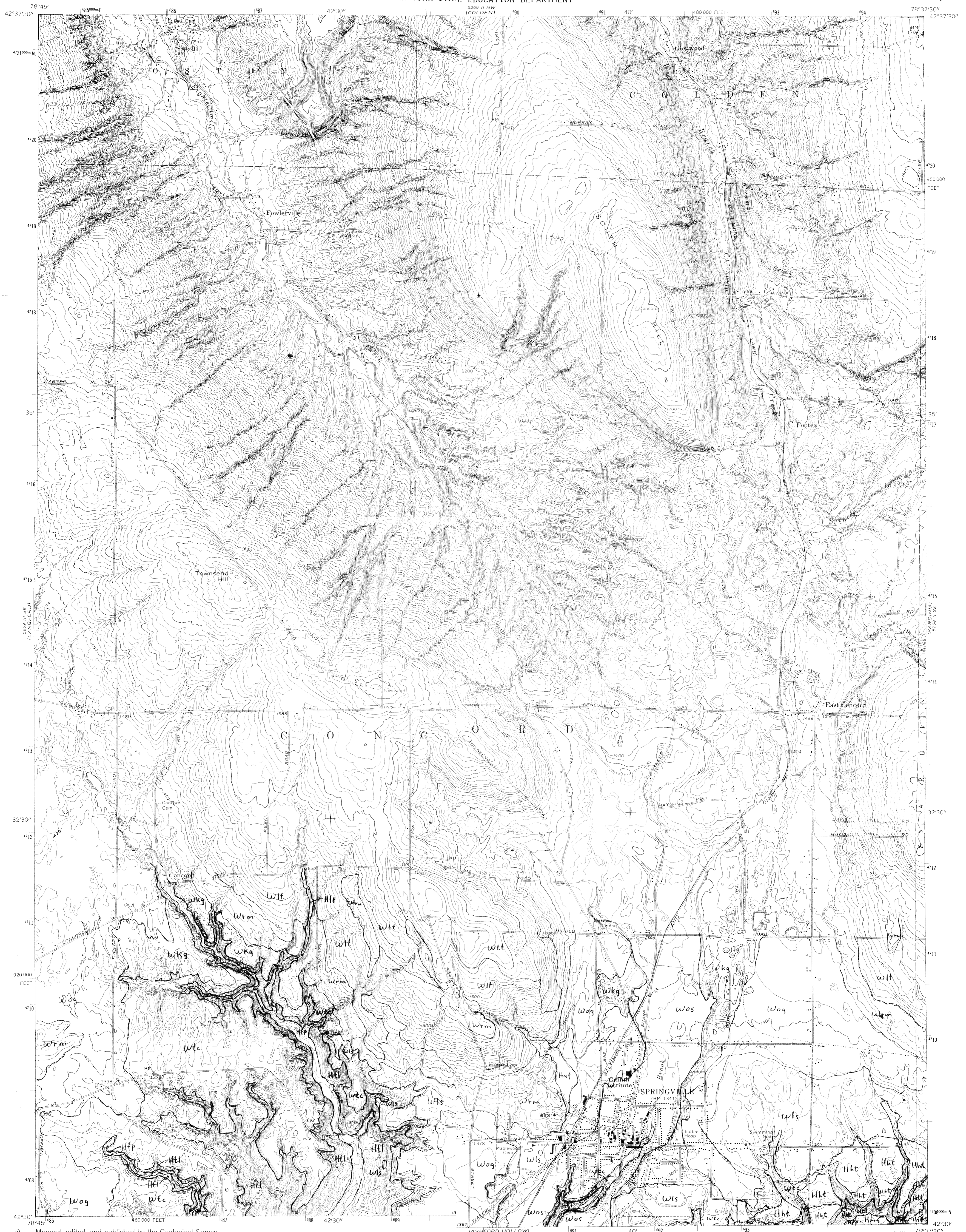
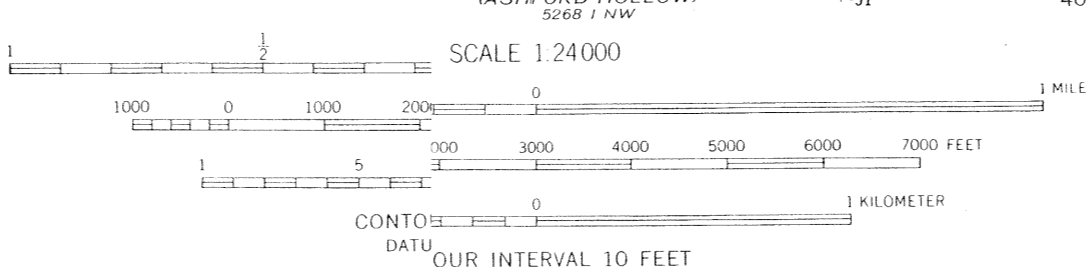
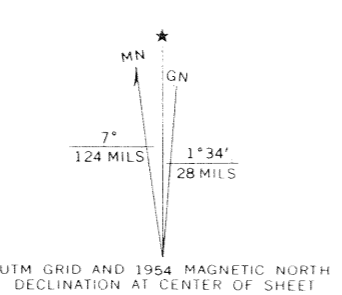


5269 II SW
(LANGFORD)

5269 II SW
(HOLAND)



Mapped, edited, and published by the Geological Survey
Control by USGS and USC&GS
Topography from aerial photographs by stereophotogrammetric
methods. Aerial photographs taken 1952. Field check 1954
Polyconic projection. 1927 North American datum
10,000-foot grid based on New York coordinate system,
west zone
1000 meter Universal Transverse Mercator grid ticks,
zone 17, shown in blue



GEOLOGY BY R. G. LALEUR, 1975
ROAD CLASSIFICATION
Heavy duty ————— Light duty —————
Medium duty ————— Unimproved dirt - - - - -
U. S. Route ————— State Route —————



GLACIAL GEOLOGY OF WESTERN NEW YORK NUCLEAR
SERVICE CENTER AND VICINITY--
SPRINGVILLE QUADRANGLE
(EXPLANATION ON REVERSE SIDE.)

SPRINGVILLE, N.Y.
SW/4 SPRINGVILLE 15' QUADRANGLE
N4230-W7837.5/7.5
1954
AMS 5269 II SW-SERIES V821

COLLINS CENTER
5269 II SW

WEST VALLEY
5269 II SW