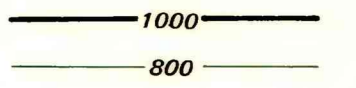


EXPLANATION



OVERBURDEN ISOPACHS - Showing thickness of overburden, in feet, from the surface to top of the "B" coal bed. Isopach interval 200 feet (61.0 m).

921
O

DRILL HOLE - Showing thickness of overburden, in feet, from the surface to top of the "B" coal bed.

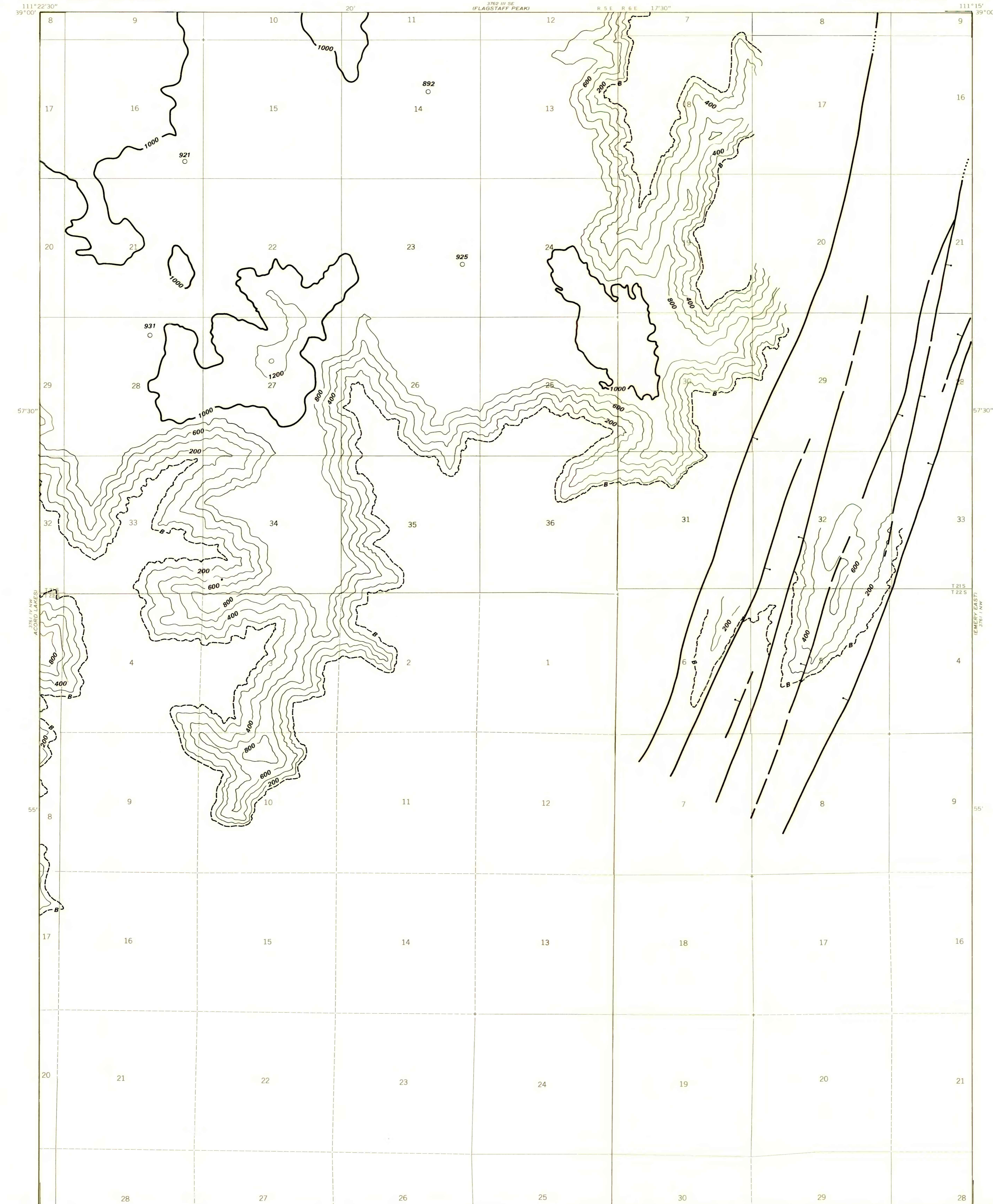
----- B -----

TRACE OF COAL BED OUTCROP - Showing symbol of name of coal bed. Dashed where inferred by present authors.

↑

FAULT - Dashed where approximately located; bar and half on downthrown side; dotted where concealed.

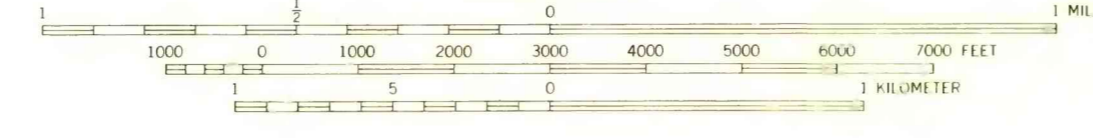
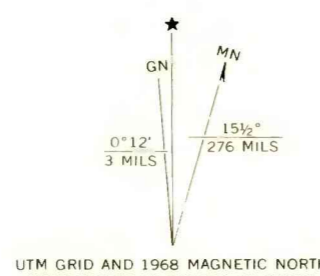
To convert feet to meters, multiply feet by 0.3048.



38°52'30" 111°22'30" 20' 3762 III SE (FLAGSTAFF PEAK) R 5 E R 6 E 17'30" 111°15' 39"00"

Base from U.S. Geological Survey, 1968

Compiled in 1978



**COAL RESOURCE OCCURRENCE MAP OF THE EMERY WEST QUADRANGLE,
SEVIER AND EMERY COUNTIES, UTAH
BY
AAA ENGINEERING AND DRAFTING, INC.
1979**

This report has not been edited for conformity with Geological Survey editorial standards or stratigraphic nomenclature.

**PLATE 14
OVERBURDEN ISOPACH MAP
OF THE
"B" COAL BED**