

EXPLANATION

— 200 —
OVERBURDEN ISOPACHS - Showing thickness of overburden, in feet, from surface to top of coal bed or zone. Dashed where vertical accuracy possibly not within 40 feet. Isopach interval is 200 feet (61 m).

○ 290
DRILL HOLE - Showing thickness of overburden, in feet, from surface to top of coal bed or zone.

— 15 —
MINING-RATIO CONTOUR - Number indicates cubic yards of overburden per ton of recoverable coal by surface mining methods. Contours shown only in areas underlain by coal of Reserve Base thickness within the stripping-limit (in this quadrangle, the 200-foot-overburden isopach). To convert mining ratio to cubic meters of overburden per metric ton of recoverable coal, multiply mining ratio by 0.8426.

Av-2A - Adaville No. 2A
K - Kemmerer coal zone

COAL BED SYMBOLS AND NAMES

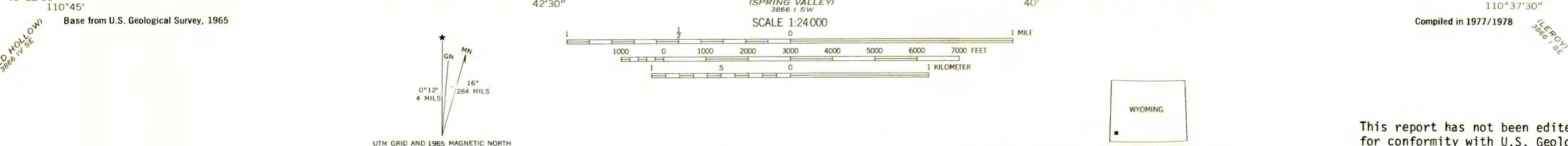
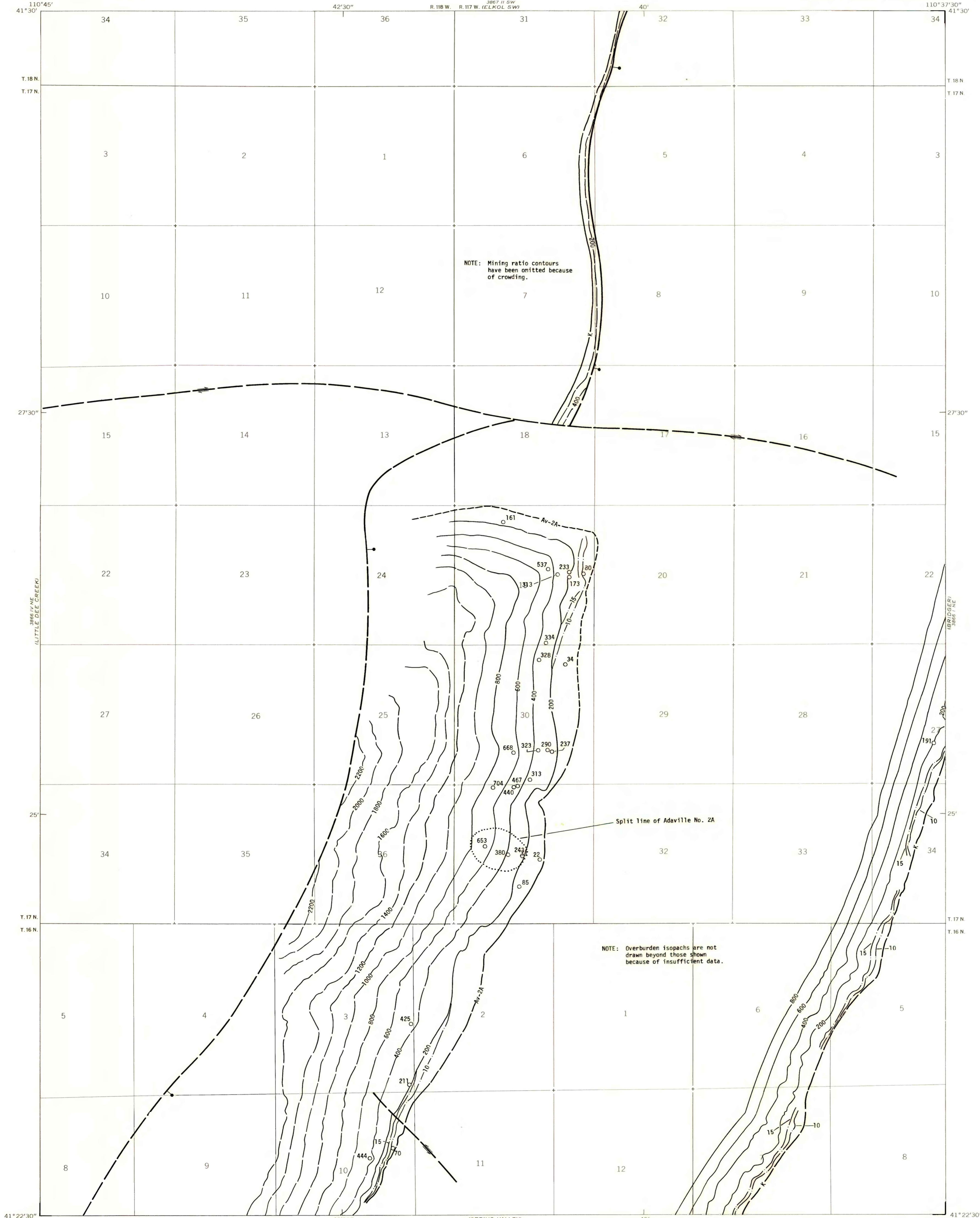
— K —
TRACE OF COAL BED OUTCROP - Showing symbol of name of coal bed or zone as listed above. Dashed where inferred; short dashed where inferred by present authors.

— | —
TRACE OF FAULT - Arrows and symbols designate direction of movement when known; bar and ball on down-thrown side. Dashed where inferred or approximately located.

To convert feet to meters, multiply feet by 0.3048.

NOTE: Mining ratio contours have been omitted because of crowding.

NOTE: Overburden isopachs are not drawn beyond those shown because of insufficient data.



**COAL RESOURCE OCCURRENCE MAP OF THE MEADOW DRAW
QUADRANGLE, UINTA COUNTY, WYOMING**
BY
DAMES & MOORE
1979

This report has not been edited for conformity with U.S. Geological Survey editorial standards or stratigraphic nomenclature.