

EXPLANATION

— 200 —
OVERBURDEN ISOPACHS - Showing thickness of overburden, in feet, from surface to top of coal bed. Dashed where vertical accuracy possibly not within 40 feet. Isopach interval is 100 feet (31 m).

○ 365
DRILL HOLE - Showing thickness of overburden, in feet, from surface to top of coal bed.

— 10 —
MINING-RATIO CONTOUR - Number indicates cubic yards of overburden per ton of recoverable coal by surface mining methods. Contours shown only in areas underlain by coal of Reserve Base thickness within the striping-limit (in this quadrangle, the 200-foot-overburden isopach). To convert mining ratio to cubic meters of overburden per metric ton of recoverable coal, multiply mining ratio by 0.8428.

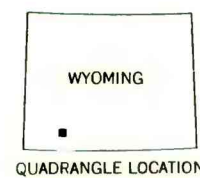
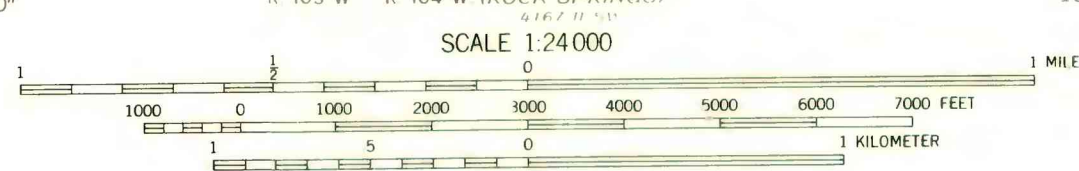
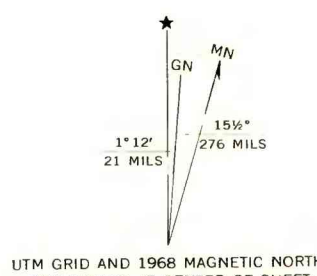
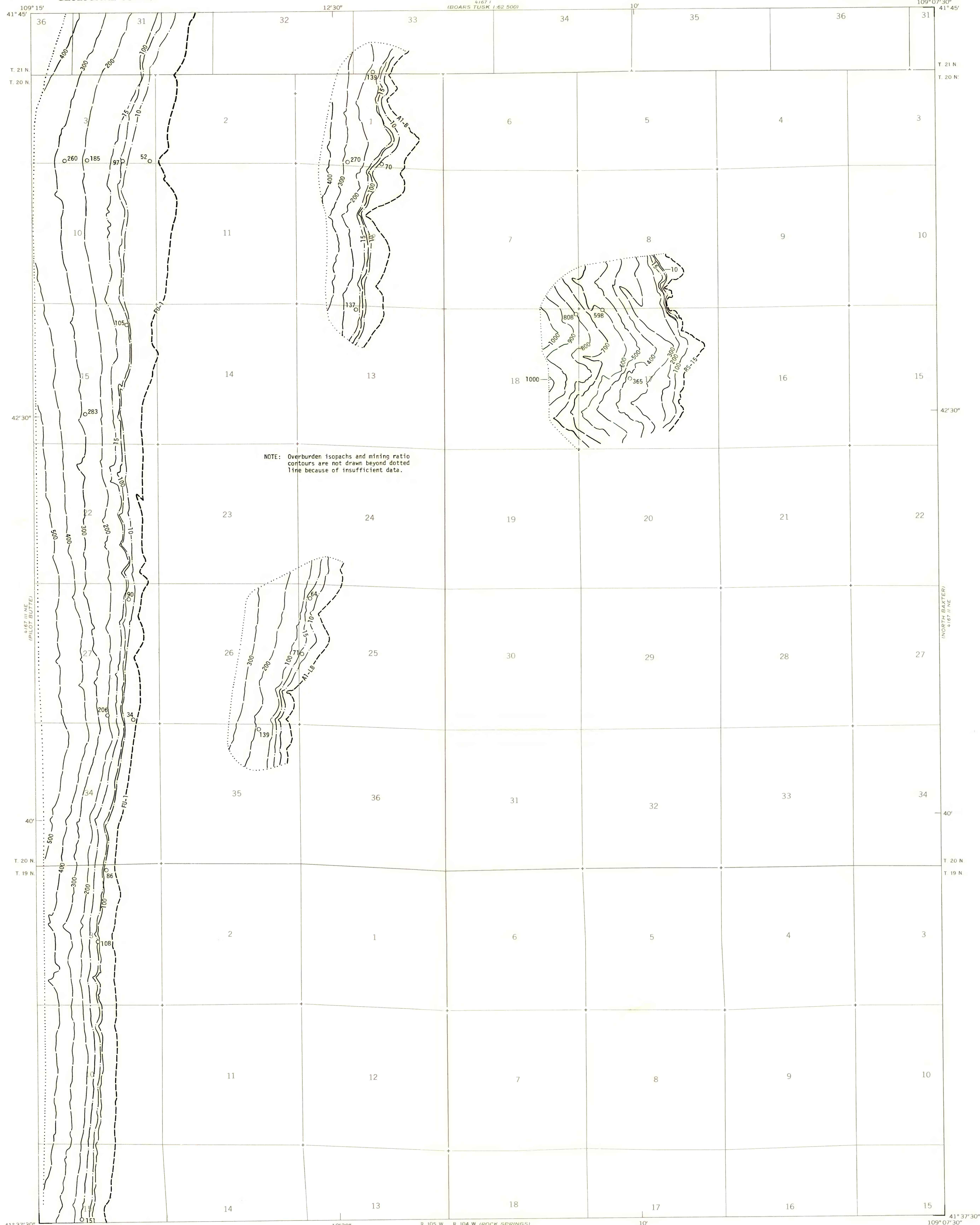
FU-1 - Fort Union No. 1 (B)
A1-B - B bed of the Almond
A1-LB - Lower B bed of the Almond
RS-15 - Rock Springs No. 15

COAL BED SYMBOLS AND NAMES

— A1-B —
TRACE OF COAL BED OUTCROP - Showing symbol of name of coal bed as listed above. Short dashed where inferred by present authors.

To convert feet to meters, multiply feet by 0.3048.

NOTE: Overburden isopachs and mining ratio contours are not drawn beyond dotted line because of insufficient data.



COAL RESOURCE OCCURRENCE MAP OF THE RELIANCE
QUADRANGLE, SWEETWATER COUNTY, WYOMING

BY
DAMES & MOORE
1979

PLATE 5
OVERBURDEN ISOPACH AND MINING
RATIO MAP OF THE ROCK SPRINGS
NO.15, THE ALMOND LOWER B,
THE ALMOND B, AND THE FORT UNION
NO.1 COAL BEDS

This report has not been edited
for conformity with U.S. Geological
Survey editorial standards or
stratigraphic nomenclature.