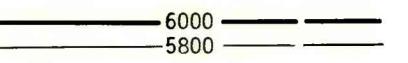


EXPLANATION



STRUCTURE CONTOURS - Drawn on top of coal bed. Solid where vertical accuracy within 40 feet; long dashed where vertical accuracy possibly not within 40 feet. Contour interval 200 feet (61 m). Datum is mean sea level.

○ 4783

DRILL HOLE - Showing altitude of top of coal bed, in feet.

▲ 6740

POINT OF MEASUREMENT - Showing altitude of top of coal bed, in feet.

FR - Fillmore Ranch
COAL BED SYMBOL AND NAME

↑ FR

TRACE OF COAL BED OUTCROP - Showing symbol of name of coal bed as listed above. Arrow points toward coal-bearing area.

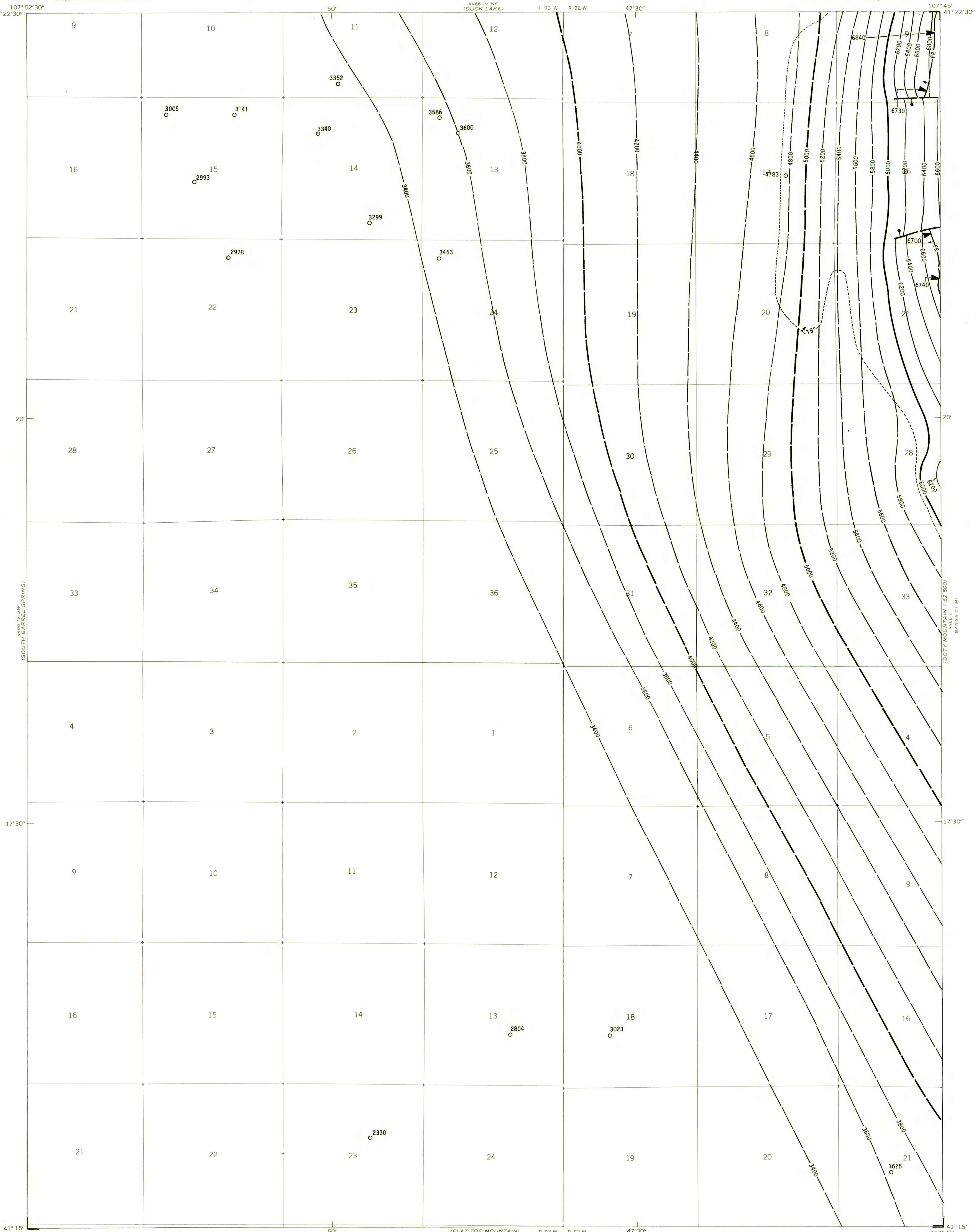
-----▲ 15°-----

SUBSURFACE MINING LIMIT - Showing areas where dips of coal beds are greater than 15° and subsurface mining by conventional methods is not considered feasible. Reserve Base tonnages are calculated beyond limit; Reserve tonnages are not. Arrow points toward area where dips are greater than 15°.

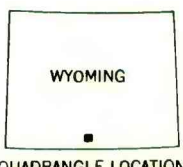
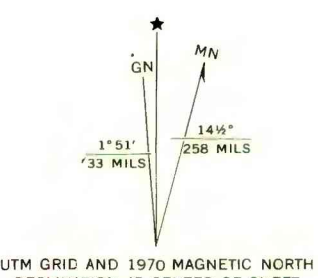
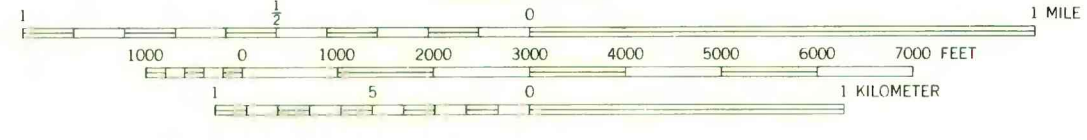
↑

TRACE OF FAULT - Bar and ball on downthrown side when direction of movement is known. Dashed where inferred or approximately located.

To convert feet to meters, multiply feet by 0.3048.



41° 15' 107° 52' 30" Base from U.S. Geological Survey, 1970 50' (FLAT TOP MOUNTAIN) 4466 III NE R. 93 W. R. 92 W. 47° 30' 41° 15' 107° 45' 17° 30' 17° 30' 41° 15' 107° 52' 30" Scaled in 1970 (SOUTH BARRELL SPRING) 4466 III SW (DROPPING ROCK SPRING) 4466 III NW



COAL RESOURCE OCCURRENCE MAP OF THE MEXICAN FLATS
QUADRANGLE, CARBON COUNTY, WYOMING
BY
DAMES & MOORE
1979

This report has not been edited for conformity with U.S. Geological Survey editorial standards or stratigraphic nomenclature.