

EXPLANATION

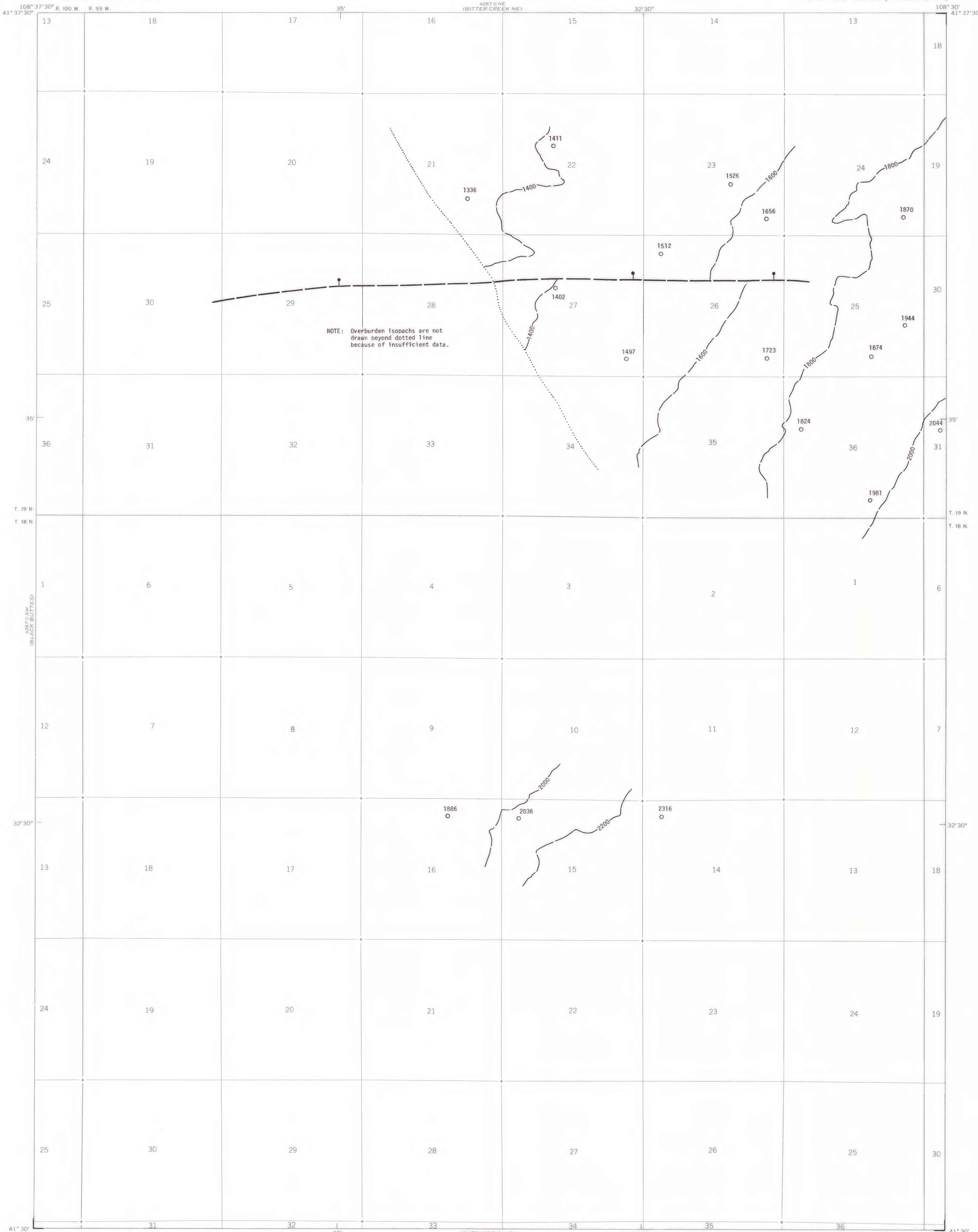
—1800—
OVERBURDEN ISOPACHS - Showing thickness of overburden, in feet, from surface to top of coal bed. Dashed where vertical accuracy possibly not within 40 feet. Isopach interval 200 feet (61 m).

○ 1723
DRILL HOLE - Showing thickness of overburden, in feet, from surface to top of coal bed.

—●—
TRACE OF FAULT - Bar and ball on downthrown side when direction of movement is known. Dashed where inferred or approximately located.

COAL BED SYMBOL AND NAME - Coal bed identified by bracketed numbers is not formally named, but is numbered for identification purposes in this quadrangle only.

To convert feet to meters, multiply feet by 0.3048.



COAL RESOURCE OCCURRENCE MAP OF THE BITTER CREEK
QUADRANGLE, SWEETWATER COUNTY, WYOMING

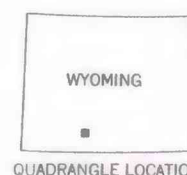
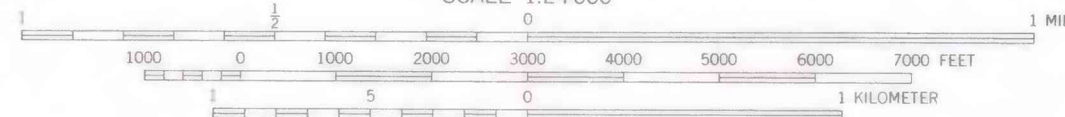
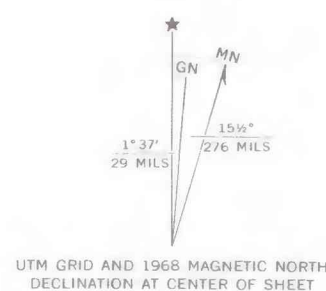
BY
DAMES & MOORE
1979

PLATE II
OVERBURDEN ISOPACH MAP OF THE
FORT UNION C3UJ COAL BED

This report has not been edited for conformity with U.S. Geological Survey editorial standards or stratigraphic nomenclature.

SAND BUTTE RIM (NW) 12500 11500

Compiled in 1977/1978



Base on U.S. Geological Survey, 1968