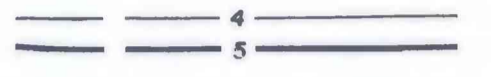


This report has not been edited for conformity with Geological Survey editorial standards or stratigraphic nomenclature.

EXPLANATION

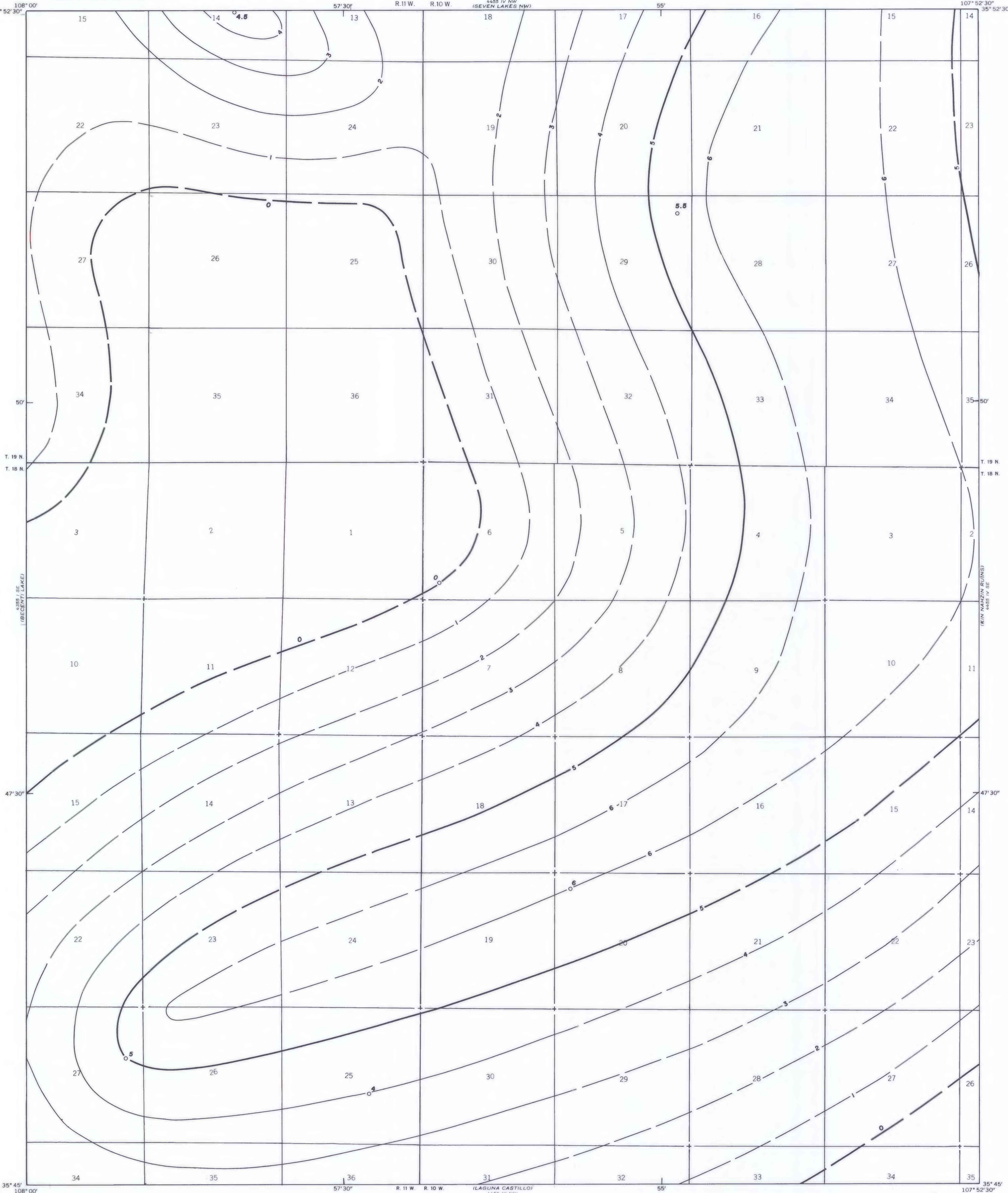


ISOPACHS OF THE MENEFFEE CLEARY NO. 1 COAL BED—Showing thickness in feet. Isopach interval 1 foot (0.3 meters). Isopachs dashed where inferred.

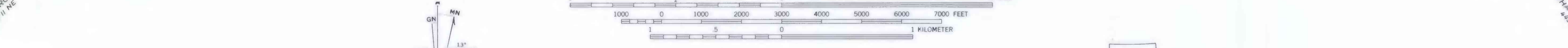
○ 6

DRILL HOLE—Showing thickness of the Meneffee Cleary No. 1 coal bed in feet.

To convert feet to meters, multiply feet by 0.3048.



Base from U.S. Geological Survey, 1970



COAL RESOURCE OCCURRENCE MAP OF THE SEVEN LAKES
QUADRANGLE, MCKINLEY COUNTY, NEW MEXICO

BY
BERGE EXPLORATION, INC.
1979