

This report has not been edited for conformity with Geological Survey editorial standards or stratigraphic nomenclature.

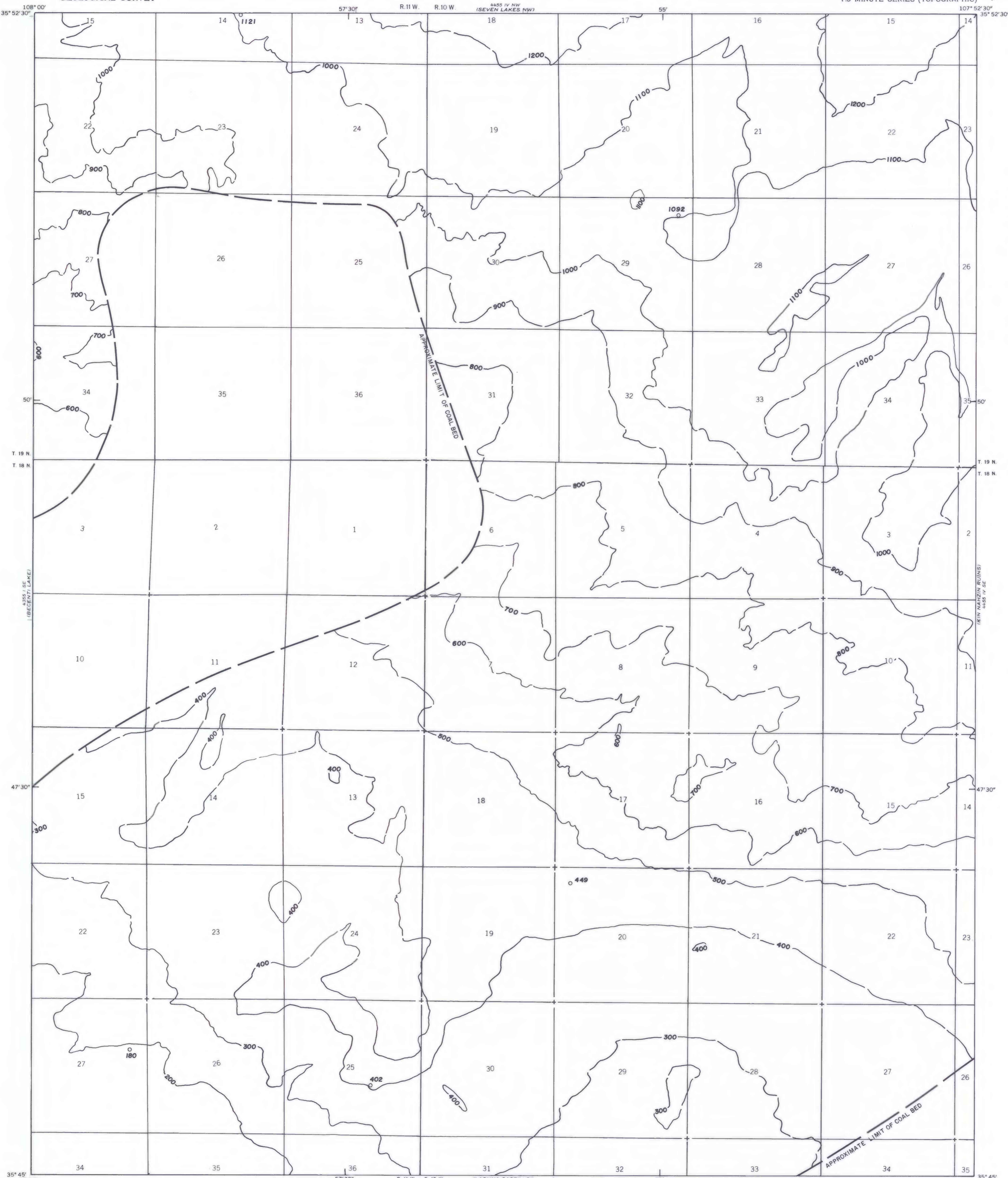
EXPLANATION

**500**  
OVERBURDEN ISOPACHS—Showing thickness of overburden, in feet, from the surface to the top of the Menefee Cleary No. 1 coal bed. Isopach interval 100 feet. Isopachs dashed where inferred. Stripping limit is 200 feet.

**1092**

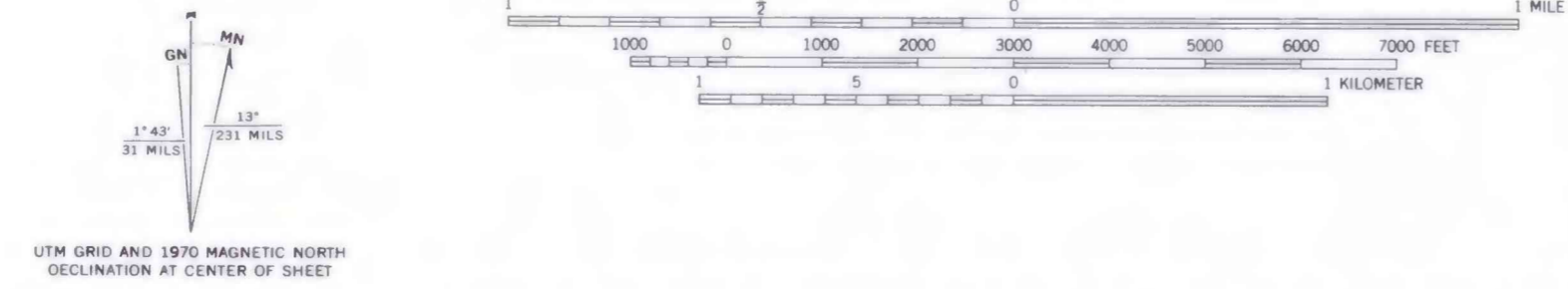
DRILL HOLE OR MEASURED SECTION—Showing thickness of overburden, in feet, from surface to top of the Menefee Cleary No. 1 coal bed

To convert feet to meters, multiply feet by 0.3048.



Base from U.S. Geological Survey, 1970

Compiled in 1978



**COAL RESOURCE OCCURRENCE MAP OF THE SEVEN LAKES  
QUADRANGLE, MCKINLEY COUNTY, NEW MEXICO**  
BY  
**BERGE EXPLORATION, INC.**  
1979