

EXPLANATION

KRCRA  
KRCRA BOUNDARY - Label within KRCRA boundary.

NON-FEDERAL COAL LAND - Land within the KRCRA boundary for which the Federal Government does not own the coal rights.

CL NM 0315559  
COAL LEASE - Showing lease number.

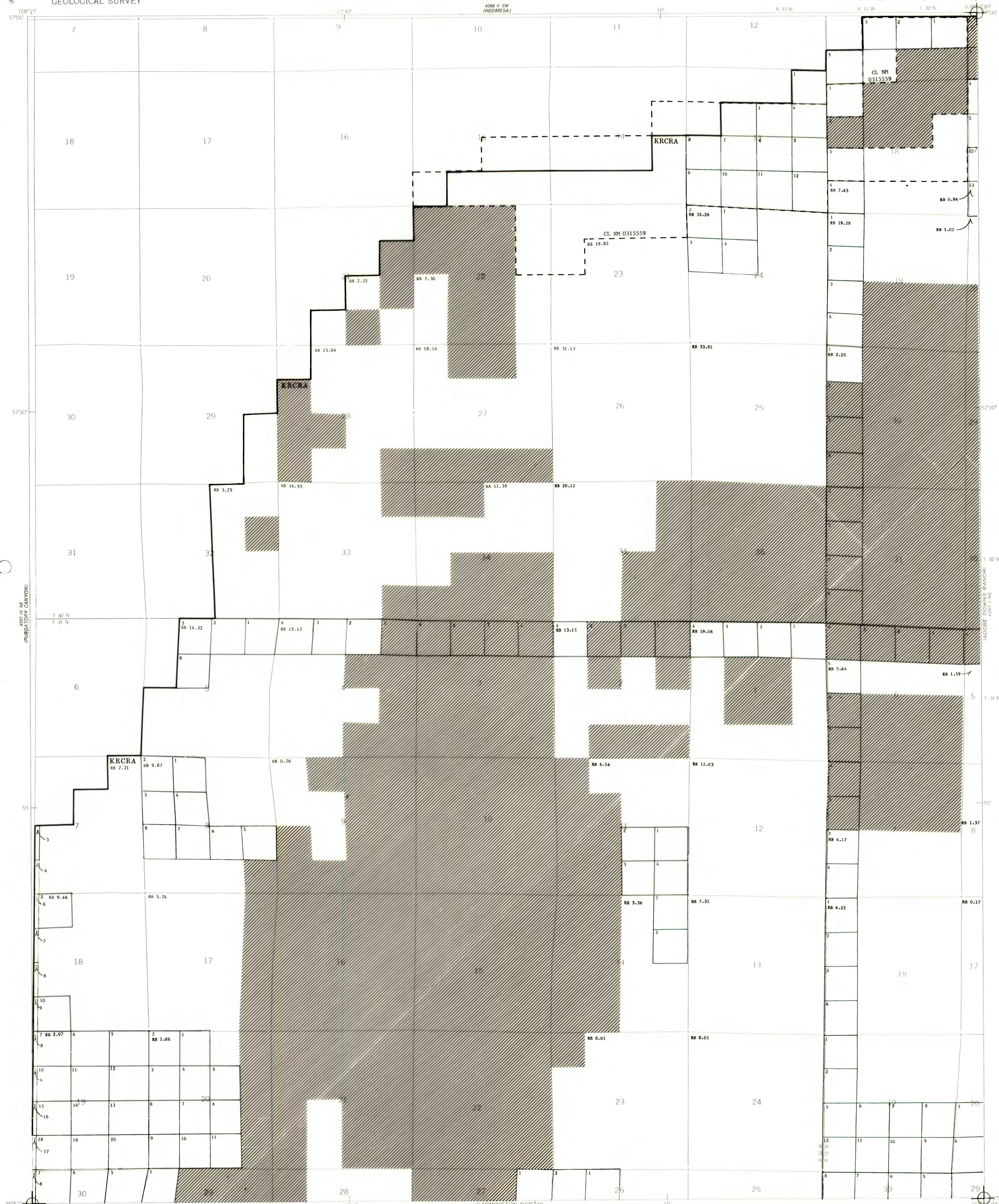
RB 2.97  
TOTAL RESERVE BASE (RB) OF FEDERAL COAL PER SECTION - In millions of short tons, calculated for each section of Federal land following the guidelines given in U.S. Geological Survey Bulletin 1450-B. To convert short tons to metric tons, multiply short tons by 0.9072.

4	3	2	1
5	6		
6			
7			

SECTION OF LAND - Showing lots and lot numbers.

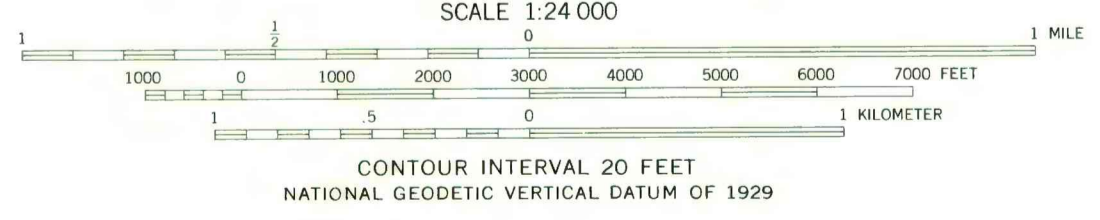
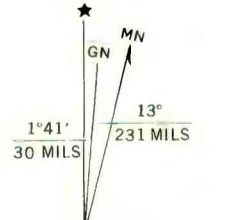
NOTE: BLM Coal Ownership Data current as of October 18, 1977.

REFERENCE  
U.S. Bureau of Mines and U.S. Geological Survey, 1976, Coal resource classification system of the U.S. Bureau of Mines and U.S. Geological Survey; U.S. Geological Survey Bulletin 1450-B, 7 p.



Base from U.S. Geological Survey, 1963

Compiled in 1979



**COAL RESOURCE OCCURRENCE MAP OF THE LA PLATA QUADRANGLE,  
SAN JUAN COUNTY, NEW MEXICO AND LA PLATA COUNTY, COLORADO  
BY  
DAMES & MOORE  
1979**

This map was prepared under contract to the U.S. Geological Survey and has not been edited for conformity with Geological Survey editorial standards. Opinions and conclusions expressed herein do not necessarily represent those of the Geological Survey.

**PLATE 2  
BOUNDARY AND COAL  
DATA MAP**