

RED MESA 1:62,500
4,358 11
108°07'30"

UNITED STATES
DEPARTMENT OF THE INTERIOR
GEOLOGICAL SURVEY

ADOBE DOWNS RANCH QUADRANGLE
NEW MEXICO-COLORADO
7.5 MINUTE SERIES (TOPOGRAPHIC)

PLATE 17 OF 23

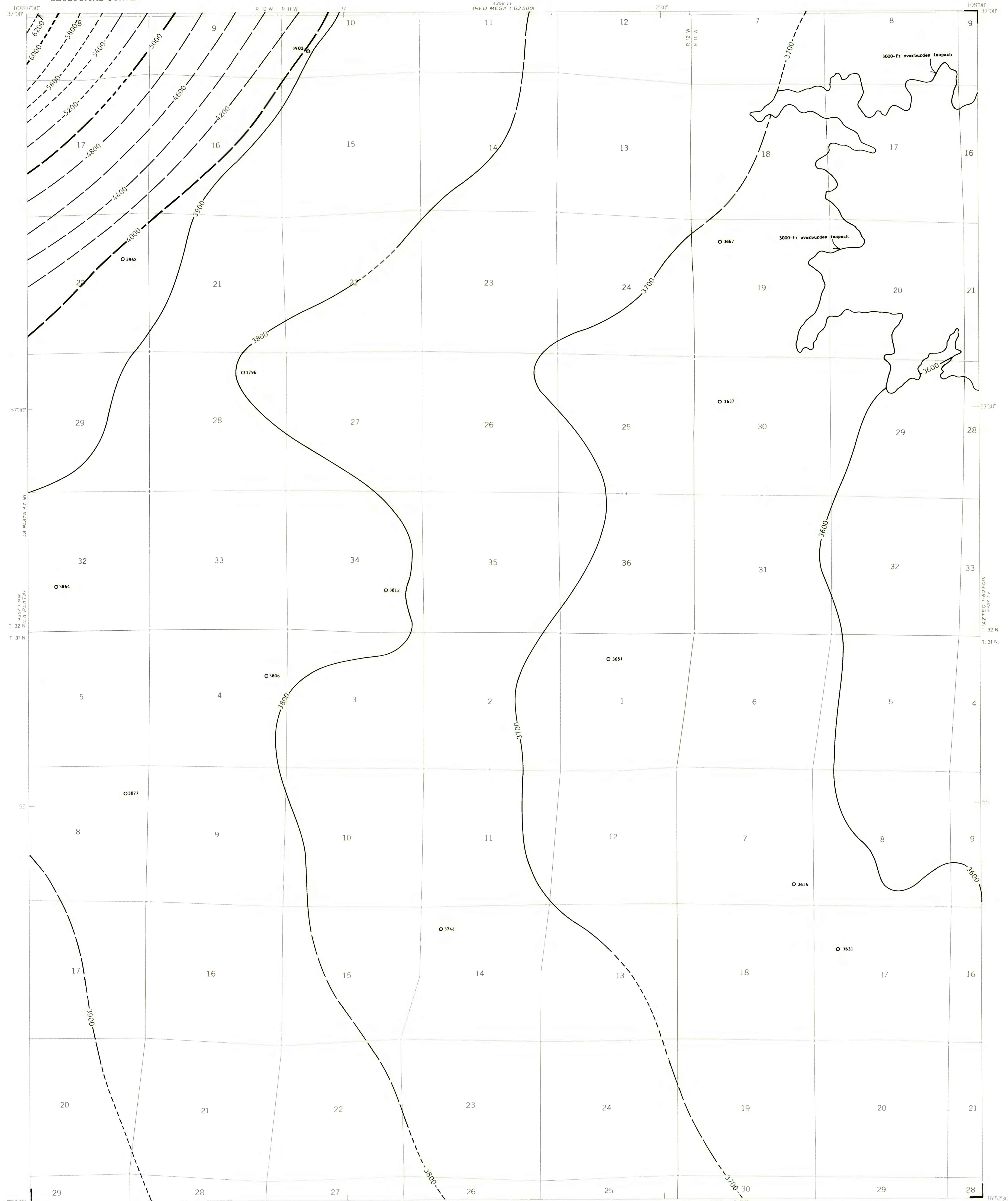
EXPLANATION
OPEN FILE REPORT 79-1111
4000
4200

STRUCTURE CONTOURS - Drawn on top of the Fruitland 4 coal bed. Contour interval 200 feet (61 meters). Datum is mean sea level. Contours long dashed where inferred, short dashed where projected through noncoal-bearing areas. Supplemental 3,700-foot (1,128-meter) and 3,900-foot (1,189-meter) structure contours added.

O 3744
DRILL HOLE - Showing altitude at the top of the Fruitland 4 coal bed, in feet.

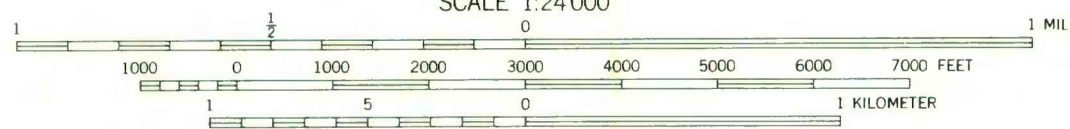
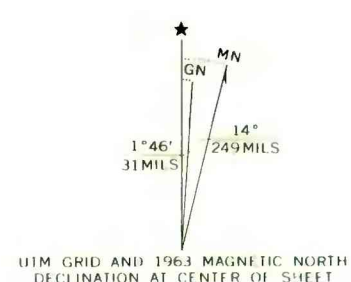
To convert feet to meters, multiply feet by 0.3048.

Fruitland coal beds contoured as a single surface on this map are equivalent in stratigraphic position but may not be continuous.



Base from U.S. Geological Survey 1963

Compiled in 1979



COAL RESOURCE OCCURRENCE MAP OF THE ADOBE DOWNS RANCH QUADRANGLE, SAN JUAN COUNTY, NEW MEXICO AND LA PLATA COUNTY, COLORADO

BY
DAMES & MOORE
1979

PLATE 17
STRUCTURE CONTOUR MAP
OF THE FRUITLAND 4 COAL BED

This map was prepared under contract to the U.S. Geological Survey and has not been edited for conformity with Geological Survey editorial standards. Opinions and conclusions expressed herein do not necessarily represent those of the Geological Survey.