

4357 1/4 NE
FOURMILE LAKE

UNITED STATES
DEPARTMENT OF THE INTERIOR
GEOLOGICAL SURVEY

FARMINGTON NORTH QUADRANGLE
NEW MEXICO-SAN JUAN CO
7.5 MINUTE SERIES (TOPOGRAPHIC)

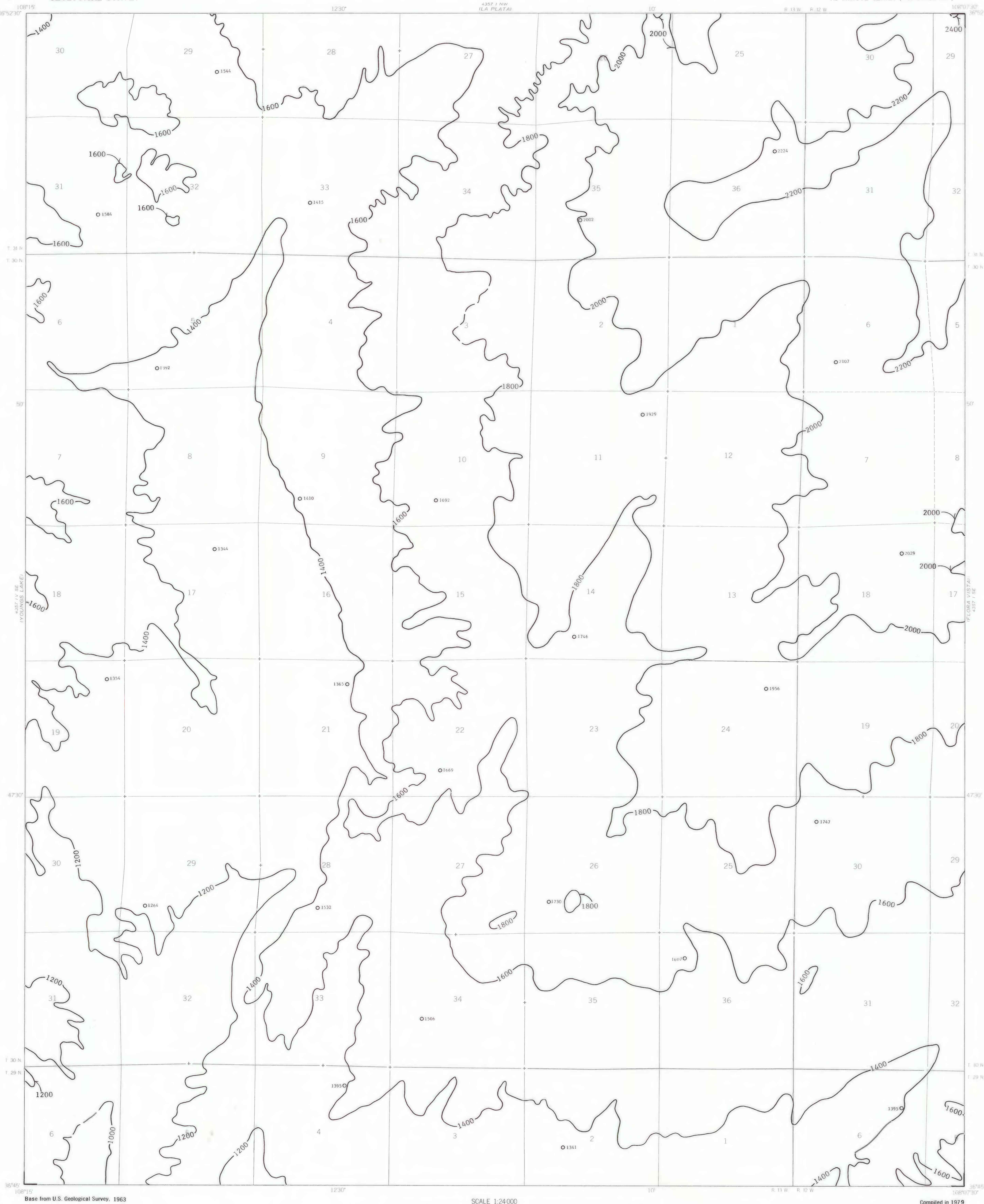
OPEN FILE REPORT 79-1115
PLATE 6 OF 11

EXPLANATION

1800
OVERBURDEN ISOPACHS - Showing thickness of overburden, in feet, from the surface to the top of the Fruitland 1 coal bed. Isopach interval 200 feet (61 meters). Isopachs dashed where projected through noncoal-bearing area.

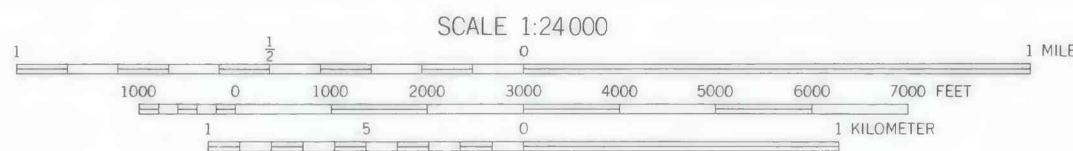
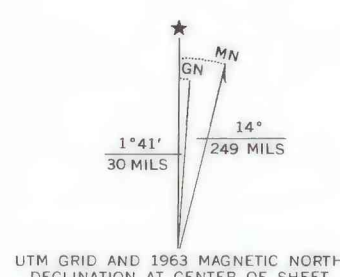
2224
DRILL HOLE - Showing thickness of overburden, in feet, from the surface to the top of the Fruitland 1 coal bed.

To convert feet to meters, multiply feet by 0.3048.



Base from U.S. Geological Survey, 1963

Compiled in 1979



COAL RESOURCE OCCURRENCE MAP OF THE FARMINGTON NORTH
QUADRANGLE, SAN JUAN COUNTY, NEW MEXICO
BY
DAMES & MOORE
1979

This map was prepared under contract to the U.S. Geological Survey and has not been edited for conformity with Geological Survey editorial standards. Opinions and conclusions expressed herein do not necessarily represent those of the Geological Survey.

PLATE 6
ISOPACH MAP OF OVERBURDEN
OF THE FRUITLAND 1 COAL BED