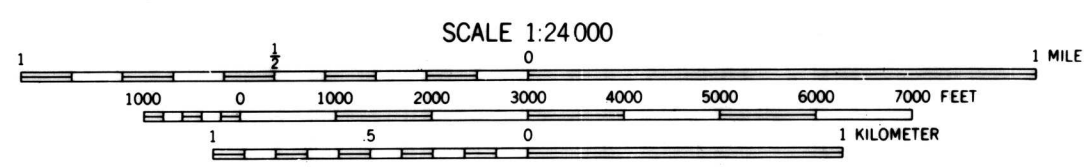
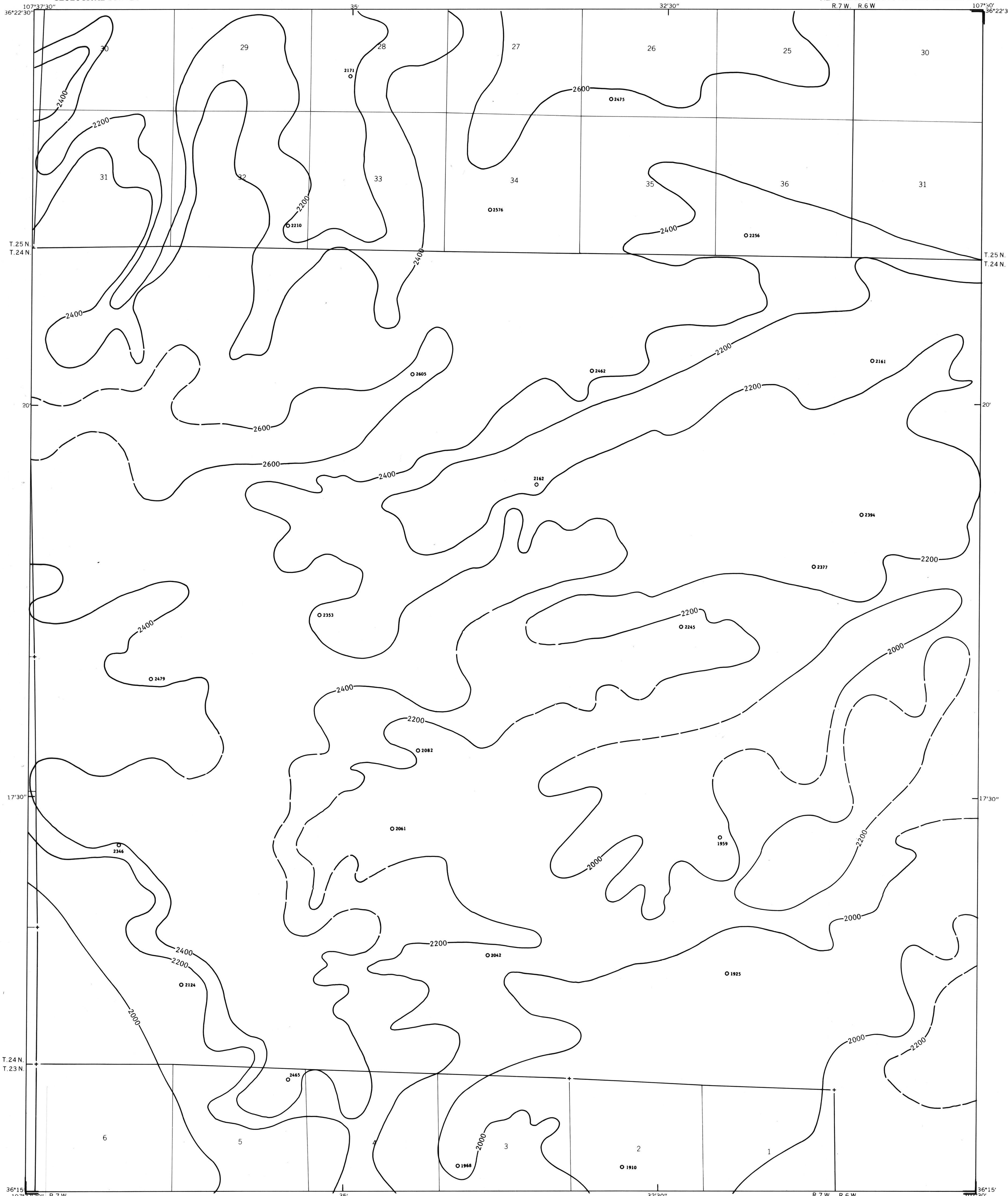


EXPLANATION

2200  
OVERBURDEN ISOPACHS - Showing thickness of overburden, in feet, from the surface to the top of the Fruitland I coal bed. Isopach interval 200 feet (61 meters). Isopachs dashed where projected through noncoal-bearing areas.

O 2061  
DRILL HOLE - Showing thickness of overburden, in feet, from the surface to the top of the Fruitland I coal bed.

To convert feet to meters, multiply feet by 0.3048.



COAL RESOURCE OCCURRENCE MAP OF THE SOUTHEAST QUARTER OF THE  
NAGEEZI 15-MINUTE QUADRANGLE, RIO ARRIBA AND SAN JUAN COUNTIES, NEW MEXICO

BY  
DAMES & MOORE  
1979

PLATE 6  
ISOPACH MAP OF OVERBURDEN  
OF THE FRUITLAND I COAL BED

This map was prepared under contract to the U.S. Geological Survey and has not been edited for conformity with Geological Survey editorial standards. Opinions and conclusions expressed herein do not necessarily represent those of the Geological Survey.