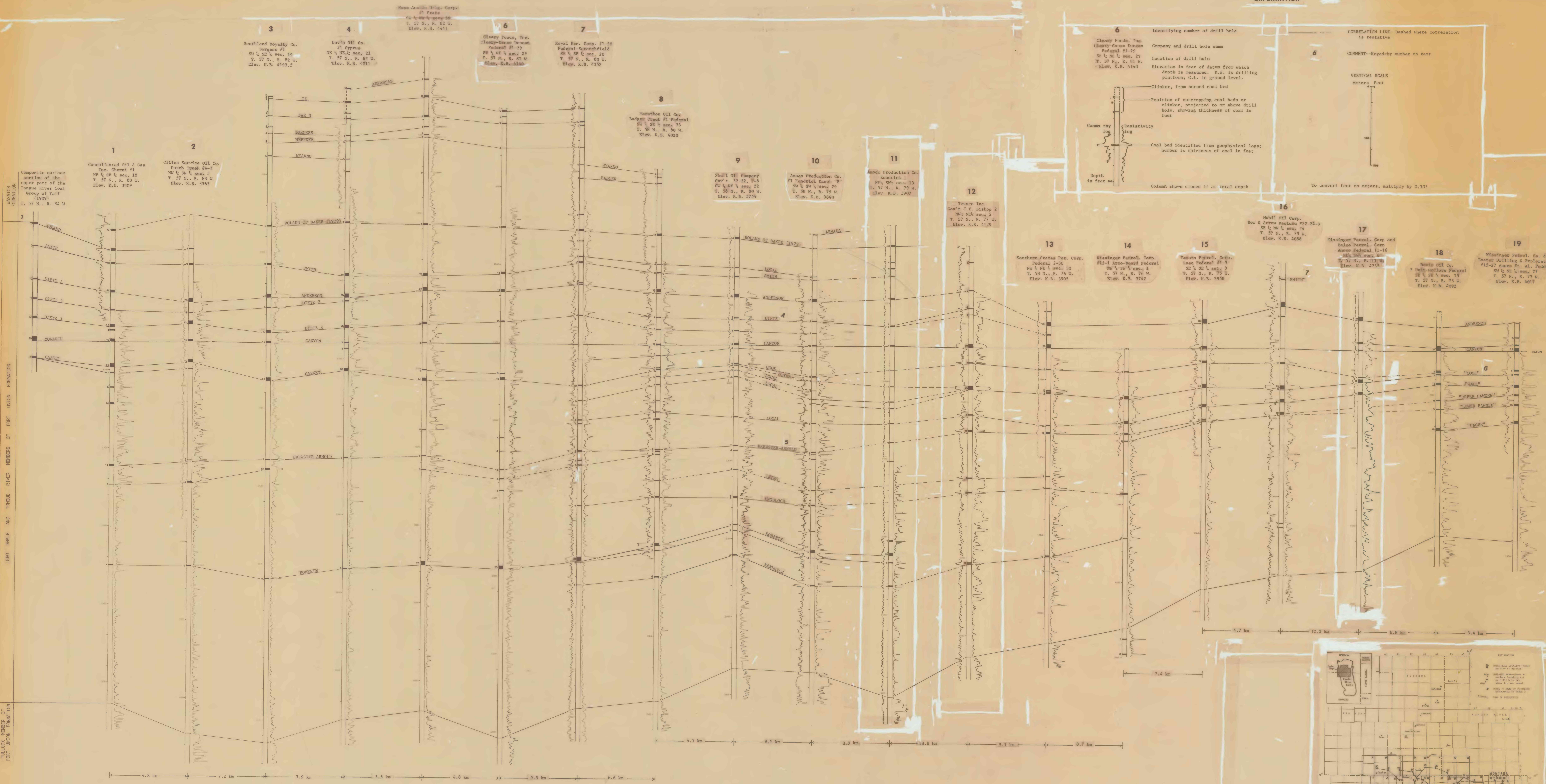
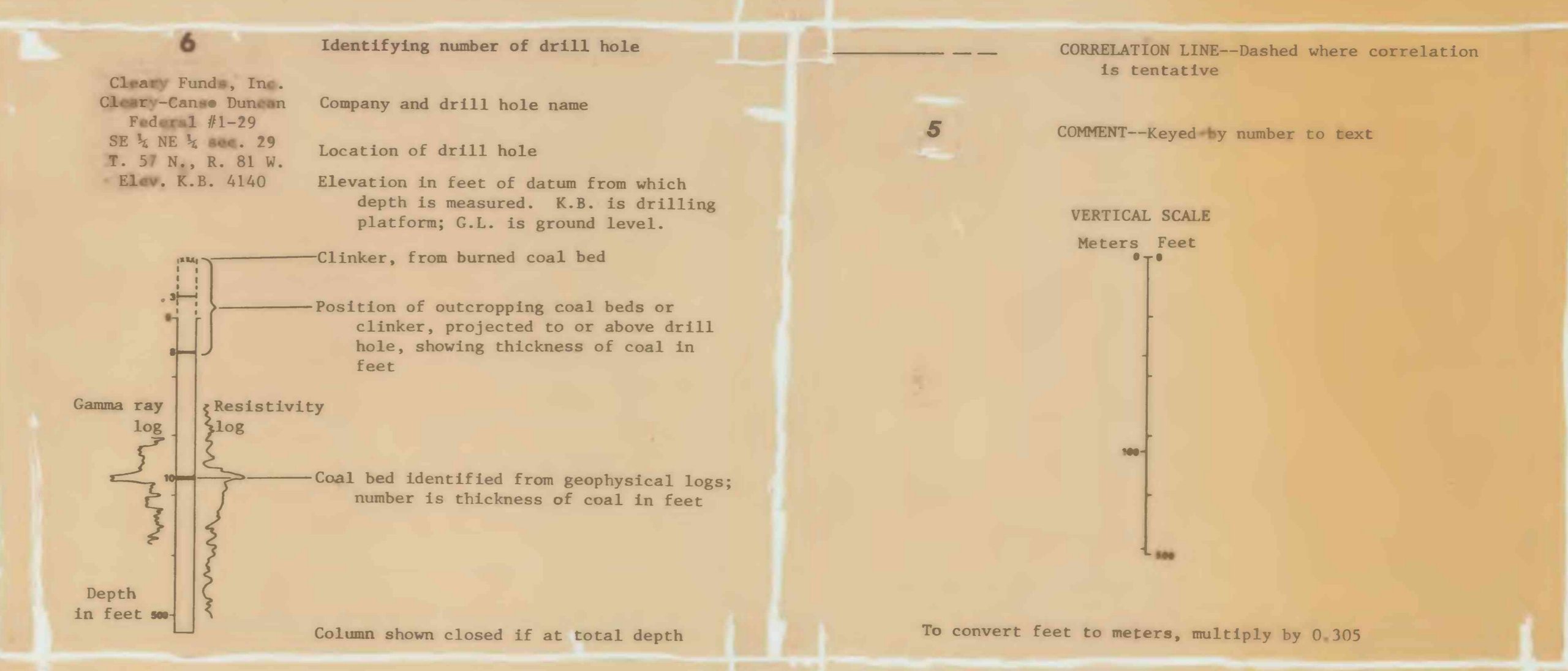


EXPLANATION



1  
Composite surface section of the upper part of the Tongue River Coal Group of Taff (1909)  
T. 57 N., R. 84 W.

2  
Consolidated Oil & Gas Inc. Charni #1  
NW 1/4 SE 1/4 sec. 18  
T. 57 N., R. 83 W.  
Elev. K.B. 3809

3  
Southland Royalty Co.  
Burgess #1  
SW 1/4 NE 1/4 sec. 19  
T. 57 N., R. 82 W.  
Elev. K.B. 4193.5

4  
Davis Oil Co.  
#1 Cypress  
NE 1/4 NE 1/4 sec. 21  
T. 57 N., R. 82 W.  
Elev. K.B. 4011

5  
Rose Austin Drilling Corp.  
#1 State  
SW 1/4 NE 1/4 sec. 26  
T. 57 N., R. 82 W.  
Elev. K.B. 4441

6  
Cleary Funds, Inc.  
Cleary-Casas Duncan Federal #1-29  
SW 1/4 NE 1/4 sec. 29  
T. 57 N., R. 81 W.  
Elev. K.B. 4140

7  
Royal Res. Corp. #1-20  
Federal-Geophysical #1  
SW 1/4 SE 1/4 sec. 20  
T. 57 N., R. 80 W.  
Elev. K.B. 4352

8  
Marathon Oil Co.  
Badger Creek #1 Federal  
SW 1/4 SE 1/4 sec. 13  
T. 58 N., R. 80 W.  
Elev. K.B. 4020

9  
Shell Oil Company  
Gov't. 32-22, #4  
SW 1/4 NE 1/4 sec. 22  
T. 58 N., R. 80 W.  
Elev. K.B. 3754

10  
Ansoco Production Co.  
#1 Kendrick Ranch "B"  
SW 1/4 SW 1/4 sec. 29  
T. 58 N., R. 79 W.  
Elev. K.B. 3640

11  
Ansoco Production Co.  
Kendrick #1  
NW 1/4 SW 1/4 sec. 13  
T. 57 N., R. 79 W.  
Elev. K.B. 3907

12  
Texaco Inc.  
Gov't J.T. Bishop 2  
NW 1/4 NE 1/4 sec. 2  
T. 57 N., R. 77 W.  
Elev. K.B. 4129

13  
Southern States Pet. Corp.  
Federal 2-30  
NW 1/4 NE 1/4 sec. 30  
T. 58 N., R. 76 W.  
Elev. K.B. 3905

14  
Kinsinger Petrol. Corp.  
#12-1 Arco-based Federal  
SW 1/4 SW 1/4 sec. 1  
T. 57 N., R. 76 W.  
Elev. K.B. 3742

15  
Tullock Petrol. Corp.  
Rose Federal #1-3  
SE 1/4 SE 1/4 sec. 3  
T. 57 N., R. 75 W.  
Elev. K.B. 3958

16  
Mobil Oil Corp.  
Bow & Arrow Reclusa #22-24-G  
SE 1/4 NW 1/4 sec. 24  
T. 57 N., R. 73 W.  
Elev. K.B. 4088

17  
Kinsinger Petrol. Corp. and Bales Petrol. Corp.  
Ansoco Federal #1-16  
NE 1/4 SW 1/4 sec. 6  
T. 57 N., R. 73 W.  
Elev. K.B. 4253

18  
Davis Oil Co.  
2 Dink-McLure Federal  
SE 1/4 SE 1/4 sec. 15  
T. 57 N., R. 73 W.  
Elev. K.B. 4092

19  
Kinsinger Petrol. Co. & Ebsom Drilling & Exploration  
#15-17 Ansoco Et. Al. Federal  
SW 1/4 SE 1/4 sec. 27  
T. 57 N., R. 73 W.  
Elev. K.B. 4017

Northeastern Wyoming

PRELIMINARY DIAGRAMS SHOWING CORRELATION OF COAL BEDS IN THE FORT UNION AND WASATCH FORMATIONS ACROSS THE NORTHERN POWDER RIVER BASIN, NORTHEASTERN WYOMING AND SOUTHEASTERN MONTANA

By  
W. C. Culbertson, B. H. Kent, and W. J. Mapel

