

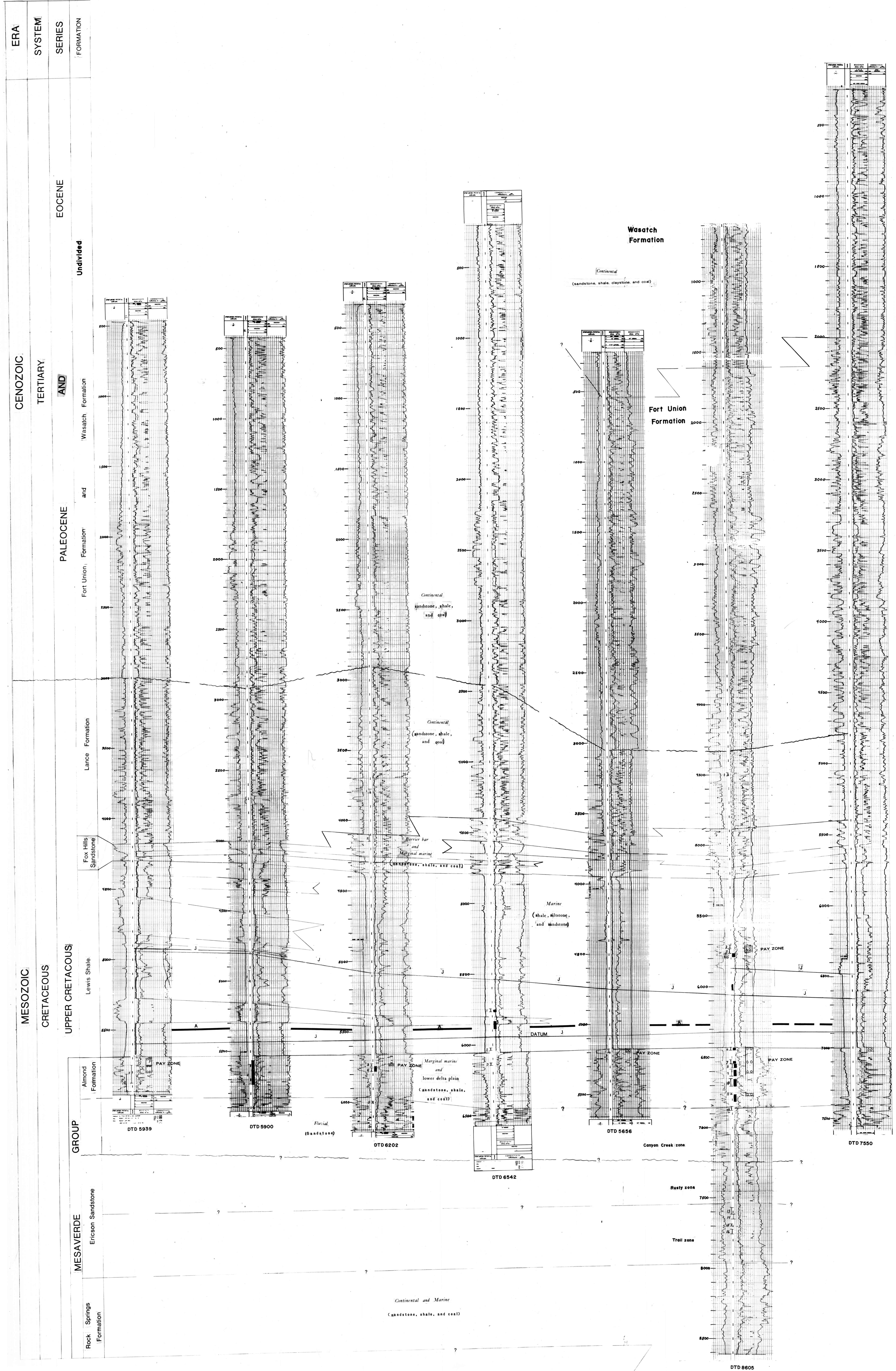
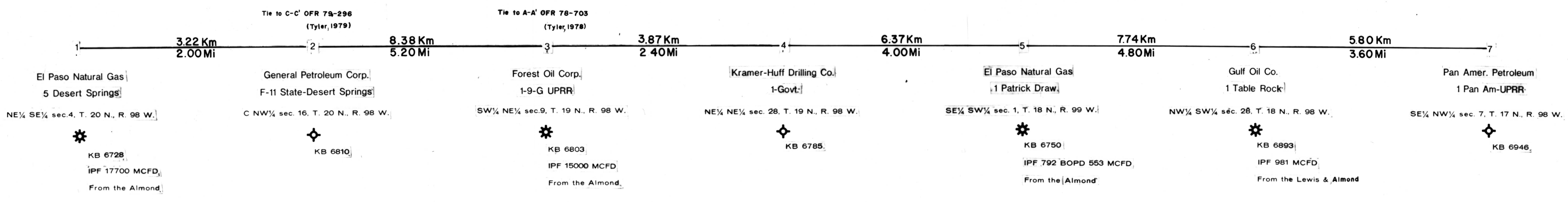
D

DESERT SPRINGS

ARCH UNIT

PATRICK DRAW

SOUTH TABLE ROCK



CENOZOIC

TERTIARY

EOCENE

PALEOCENE

UPPER CRETACEOUS

GROUP

MESAVERDE

Rock Springs Formation

Ericson Sandstone

Lewis Shale

Fox Hills Sandstone

Lance Formation

Fort Union Formation

and

Wasatch Formation

UNDIVIDED

EOCENE

SERIES

FORMATION

SYSTEM

ERA