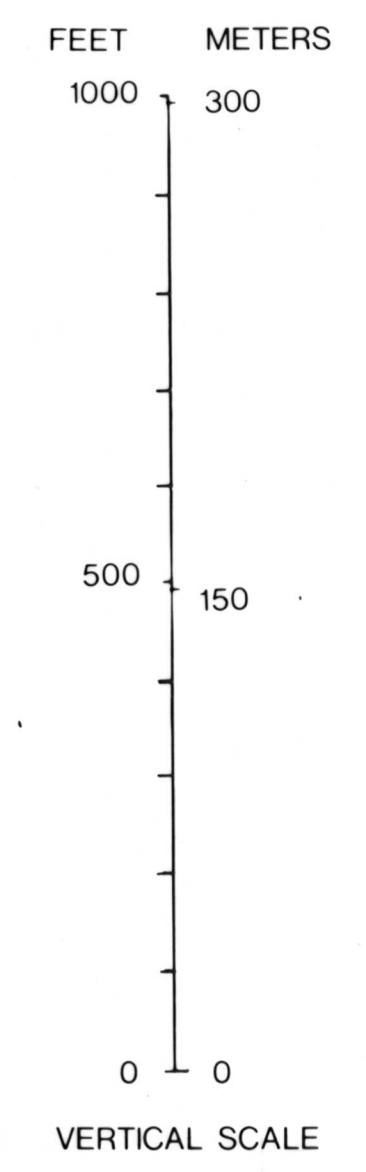
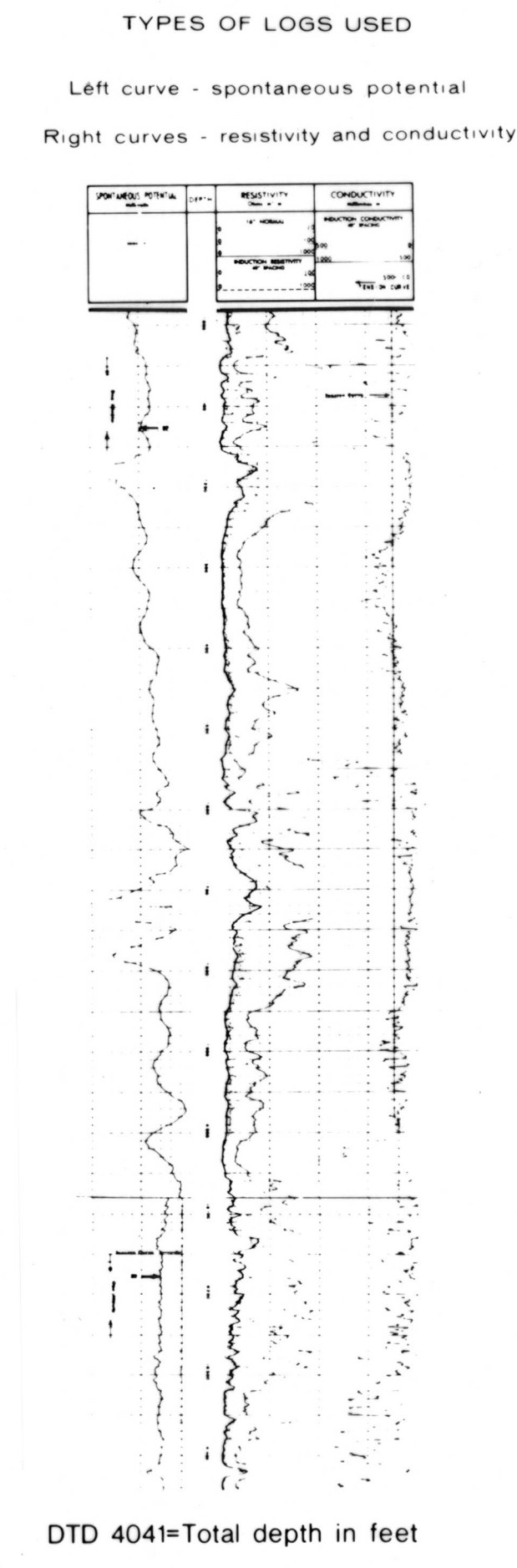


WELL LOCATION
 SHEET: 1: 1-7
 2: 8-14
 3: 15-21

4: Drill-stem test information

EXPLANATION

- | | |
|---|---|
| A- Stratigraphic Correlation Marker | □ □ Perforation Test-Gross interval |
| B- Bentonite correlation marker | ● Oil well |
| C- Coal Correlation Marker | ✦ Producing Well |
| J- Correlatable stratigraphic horizon | ⊛ Gas well |
| ~~~~~ Unconformity | ✦ Abandoned Producing Well
Abd. 1969 |
| --- Facies relationship and (or) formation contact, dashed where questionable,
? used to indicate higher degree of uncertainty | ✦ Dry and abandoned well |
| 3 Indicates interval and number of drill-stem test in each hole | |
| ■ Cored interval | |
| DF 7294- Elevation of derrick floor in feet | |
| KB 6981- Elevation of Kelly bushing in feet | |
| Marginal marine - general environment of deposition for formation | |
| PAY ZONE - Producing interval | |



REFERENCES

Smith, J. H. 1961, A summary of stratigraphy and paleontology Upper Colorado and Montanan groups, southcentral Wyoming, northeastern Utah, and northwestern Colorado, in Wiloth, G. L., ed., Wyoming Geological Association 16th Annual Field Conference Guidebook, Symposium on Late Cretaceous rocks, Wyoming and adjacent areas: p.101-112.

1965, A summary of stratigraphy and paleontology, Upper Colorado and Montanan groups, southcentral Wyoming, northeastern Utah, and northwestern Colorado, in De Voto, R. H., and Bitter, K. K., eds., Wyoming Geological Association 19th Annual Field Conference Guidebook, Sedimentation of Late Cretaceous and Tertiary outcrops, Rock Springs Uplift: p. 13-26.

Tyler, T. F., 1978, Preliminary chart showing electric log correlation section A-A' of some Upper Cretaceous and Tertiary rocks, Washakie basin, Wyoming: U.S. Geological Survey Open-File Report 78-703, 4 p.

1978, Preliminary chart showing electric log correlation section BB' of some Upper Cretaceous and Tertiary rocks, Washakie basin, Wyoming: U.S. Geological Survey Open-File report 78-1053, 3 p.

1979, Preliminary chart showing electric log correlation section CC' of some Upper Cretaceous and Tertiary rocks, Wamsutter Arch, Wyoming: U.S. Geological Survey Open-File Report 79-296, 3 p.

PRELIMINARY CHART SHOWING ELECTRIC LOG CORRELATION SECTION D-D' OF SOME UPPER CRETACEOUS AND TERTIARY ROCKS, EAST FLANK ROCK SPRINGS UPLIFT, WYOMING

By
 THEODORE F. TYLER
 1979