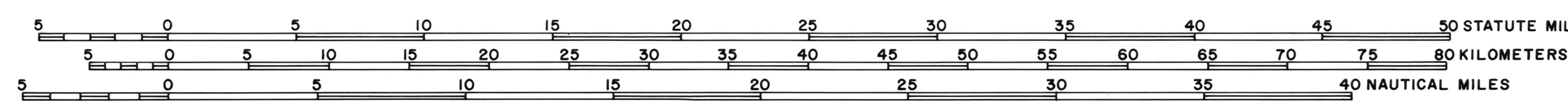


MAP SCALE 1:250,000 AT LATITUDE 72°00'N



POLAR STEREOGRAPHIC PROJECTION

LEGEND

- 10, 30, 50, 150 Meters
- 20, 40, 60, 80, 100 Meters
- 300, 500 Meters
- 200, 400 Meters
- Every 200 meters to 3600 meters
- Inferred
- Localized Depression
- Localized High

BATHYMETRIC MAP OF THE CONTINENTAL SHELF, SLOPE, AND RISE OF THE BEAUFORT SEA NORTH OF ALASKA

BY  
JONATHAN GREENBERG, PATRICK E. HART, AND ARTHUR GRANTZ

1979

This map is preliminary and has not been edited or reviewed for conformity with U.S. Geological Survey standards and nomenclature.

Note: For a discussion of the areal extent and quality of data, method of interpretation, and a listing of data sources see Greenberg et al., 1979, Bathymetric Map of the Continental Shelf, Slope, and Rise of the Beaufort Sea, North of Alaska, U.S. Geological Survey Miscellaneous Geologic Investigation Map 1-1182 (in press).

Note: Not intended for navigation.

