

EXPLANATION

STRUCTURE CONTOURS - Drawn on top of coal bed. Solid where vertical accuracy within 80 feet; long dashed where vertical accuracy possibly not within 80 feet. Contour interval 80 feet (24 m). Datum is mean sea level.

DRILL HOLE - Showing altitude of top of coal bed. Drill holes which did not intersect top of coal zone or from which bed altitude could not be determined, are not shown.

POINT OF MEASUREMENT - Showing altitude of top of coal bed, in feet. Includes all points of measurement other than drill holes.

WC - Wolf Creek
COAL BED SYMBOLS AND NAMES

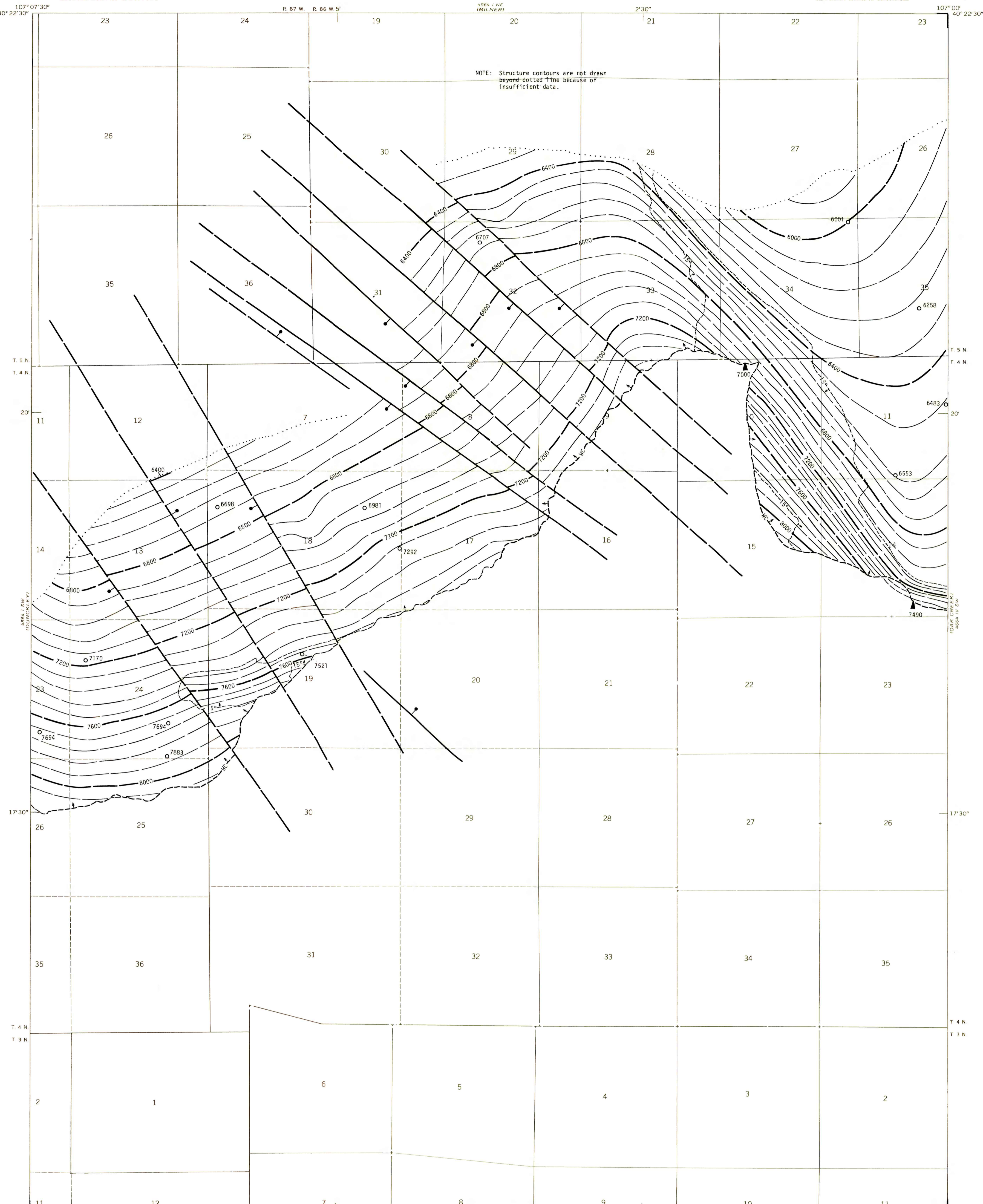
TRACE OF COAL BED OUTCROP - Showing symbol of name of coal bed as listed above. Arrow points toward coal-bearing area. Short dashed where inferred by present authors.

SUBSURFACE MINING LIMIT - Showing areas where dips of coal beds are greater than 15° and subsurface mining by conventional methods is not considered feasible. Reserve Base tonnages are calculated beyond limit; Reserve tonnages are not. Arrow points toward area where dips are greater than 15°.

TRACE OF FAULT - Bar and ball on down-thrown side when direction of movement is known. Dashed where inferred or approximately located.

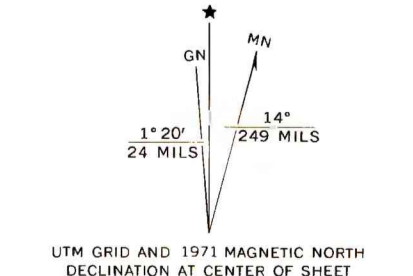
To convert feet to meters, multiply feet by 0.3048.

NOTE: Structure contours are not drawn beyond dotted line because of insufficient data.



Base from U.S. Geological Survey, 1971
SAND POINT 4564 11 NE SCALE 1:24000
Compiled in 1979

This report has not been edited for conformity with U.S. Geological Survey editorial standards or stratigraphic nomenclature.



**COAL RESOURCE OCCURRENCE MAP OF THE RATTLESNAKE BUTTE
QUADRANGLE, ROUTT COUNTY, COLORADO
BY
DAMES & MOORE
1979**