

STRUCTURE CONTOURS - Drawn on top of coal bed. Solid where vertical accuracy within 80 feet; long dashed where vertical accuracy possibly not within 80 feet; short dashed where projected above ground surface. Contour interval 80 Feet (24 m). Datum is mean sea level.

DRILL HOLE - Showing altitude of top of coal bed. Drill holes which did not intersect top of coal zone or from which bed altitude could not be determined, are not shown.

POINT OF MEASUREMENT - Showing altitude of top of coal bed, in feet. Includes all points of measurement other than drill holes.

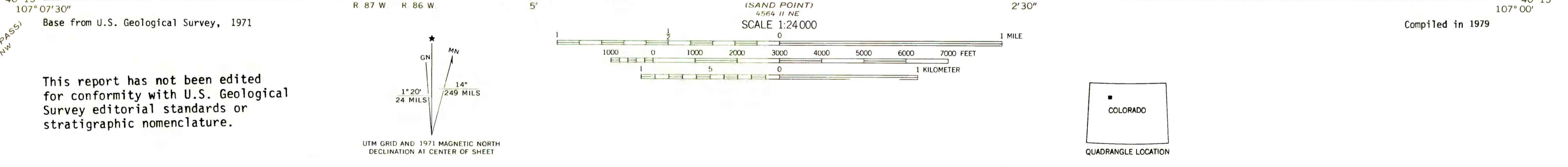
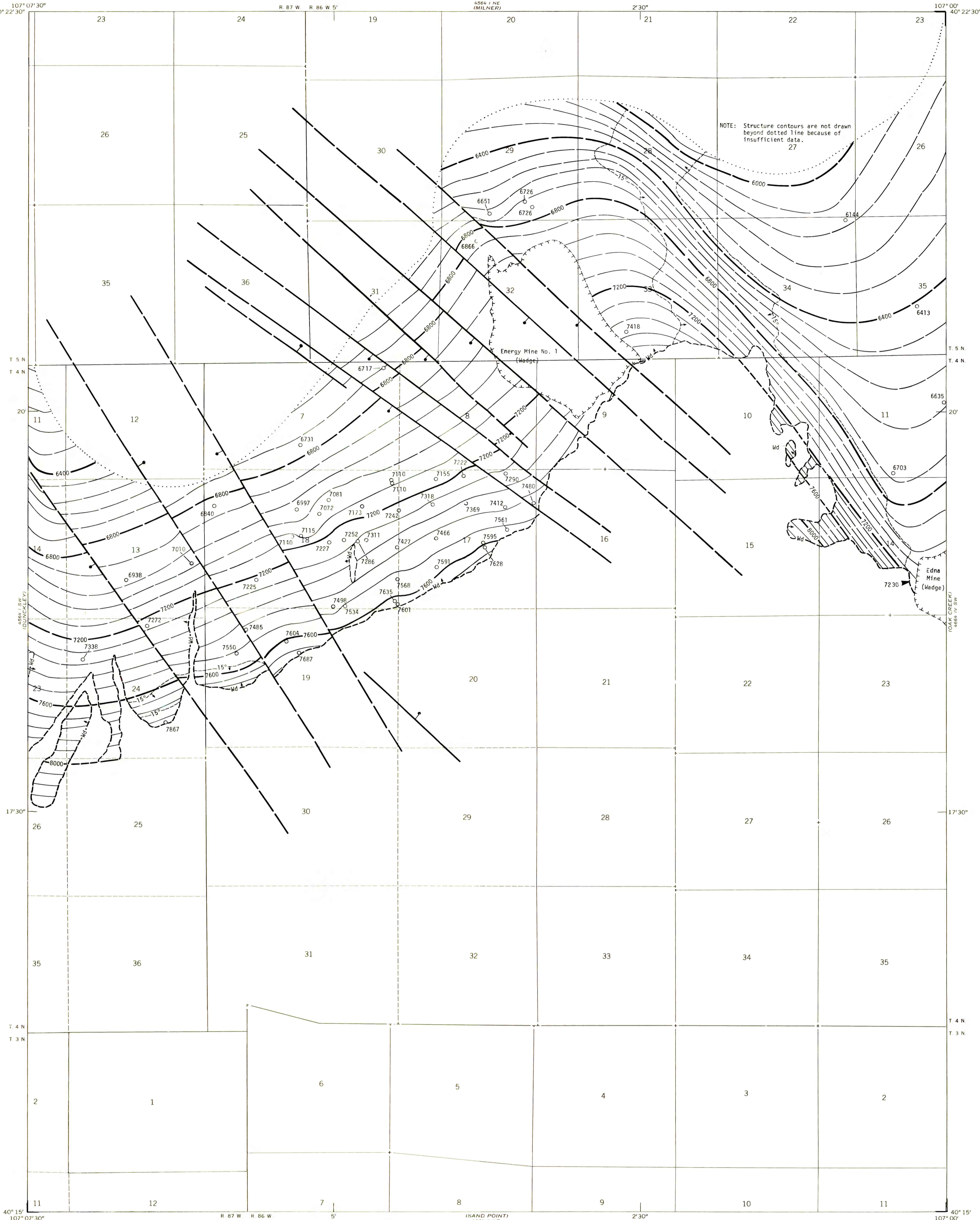
Wd - Wadge
COAL BED SYMBOL AND NAME
TRACE OF COAL BED OUTCROP - Showing symbol of name of coal bed as listed above. Arrow points toward coal-bearing area. Short dashed where inferred by present authors.

SUBSURFACE MINING LIMIT - Showing areas where dips of coal beds are greater than 15° and subsurface mining by conventional methods is not considered feasible. Reserve Base tonnages are calculated beyond limit; Reserve tonnages are not. Arrow points toward area where dips are greater than 15°.

TRACE OF FAULT - Bar and ball on down-thrown side when direction of movement is known. Dashed where inferred or approximately located.

Edna Mine (Wadge)
COAL STRIP MINE - Hachures point toward mined area. Dashed where approximately located.

To convert feet to meters, multiply feet by 0.3048.



**COAL RESOURCE OCCURRENCE MAP OF THE RATTLESNAKE BUTTE
QUADRANGLE, ROUTT COUNTY, COLORADO
BY
DAMES & MOORE
1979**