

UNITED STATES  
DEPARTMENT OF THE INTERIOR  
GEOLOGICAL SURVEY

THORNBURGH QUADRANGLE  
COLORADO  
7.5 MINUTE SERIES (TOPOGRAPHIC)

PLATE 5 OF 12

EXPLANATION

400  
OVERBURDEN ISOPACHS - Showing thickness of overburden, in feet, from surface to top of coal bed. Isopach interval 200 feet (61 m).

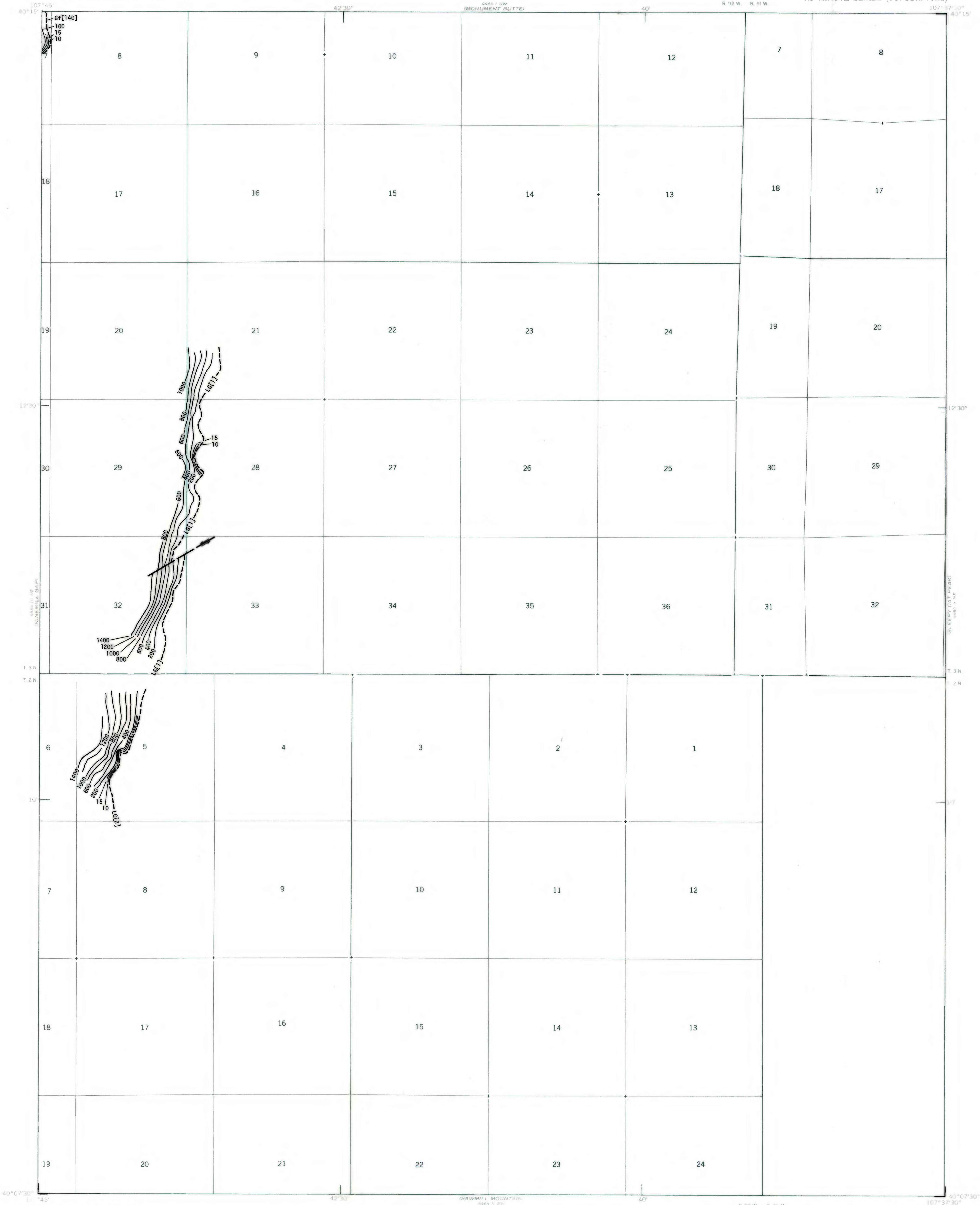
15  
MINING-RATIO CONTOUR - Number indicates cubic yards of overburden per ton of recoverable coal by surface mining methods. Contours shown only in areas underlain by coal of Reserve Base thickness within the stripping-limit (in this quadrangle, the 200-foot-overburden isopach).

Gf - Goff coal group  
LG - Lower Coal Group  
COAL BED SYMBOL AND NAME - Coal bed identified by bracketed numbers is not formally named, but is numbered for identification purposes in this quadrangle only.

Gf[140]  
TRACE OF COAL BED OUTCROP - Showing symbol of name of coal bed as listed above. Short dashed where projected by present authors.

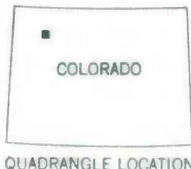
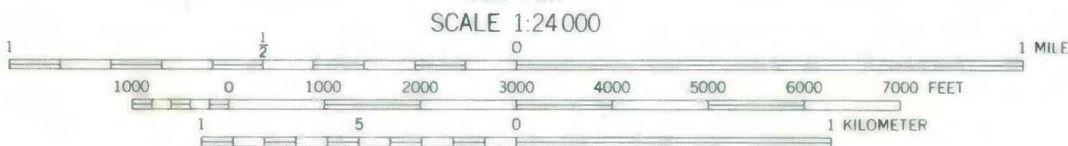
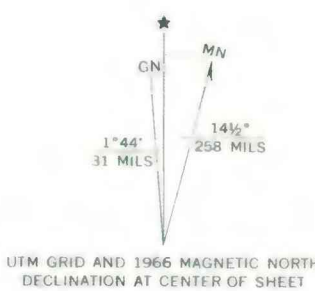
TRACE OF FAULT - Arrows indicate direction of movement. Dashed here inferred or approximately located.

To convert feet to meters, multiply feet by 0.3048.



Base from U.S. Geological Survey, 1966

This report has not been edited for conformity with U.S. Geological Survey editorial standards or stratigraphic nomenclature.



Compiled in 1979

COAL RESOURCE OCCURRENCE MAP OF THE THORNBURGH QUADRANGLE,  
RIO BLANCO AND MOFFAT COUNTIES, COLORADO  
BY  
DAMES & MOORE  
1979

PLATE 5  
OVERBURDEN ISOPACH AND MINING RATIO  
MAP OF THE LOWER COAL GROUP,  
COAL BEDS [1] AND [2], AND  
THE GOFF COAL GROUP, COAL BED [140]