

Figure 12.--Single point resistance, self-potential, and natural gamma logs of drill-hole BH-D1C

Hole location: 950 FNL, 1,425 FEL, sec. 35,
T. 15 N., R. 90 W., 6th P.M.,
Carbon County, Wyoming

Logged depth: 395 ft

Detector: type, scintillation; diameter, 1.5 in.; K-factor,
 2.50×10^{-5} ; dead time, 11 microsec; scale,
50 cps/in.; time constant, 2 sec

Collar elevation: 7,630 ft

Logging speed: 25 ft/min

Calibration: see log

Date drilled: Aug. 25, 1977

Logged by: Halvorson, Rocky Mountain Logging Service,
Casper, Wyo.

Open-hole diameter: 5-1/8-in.

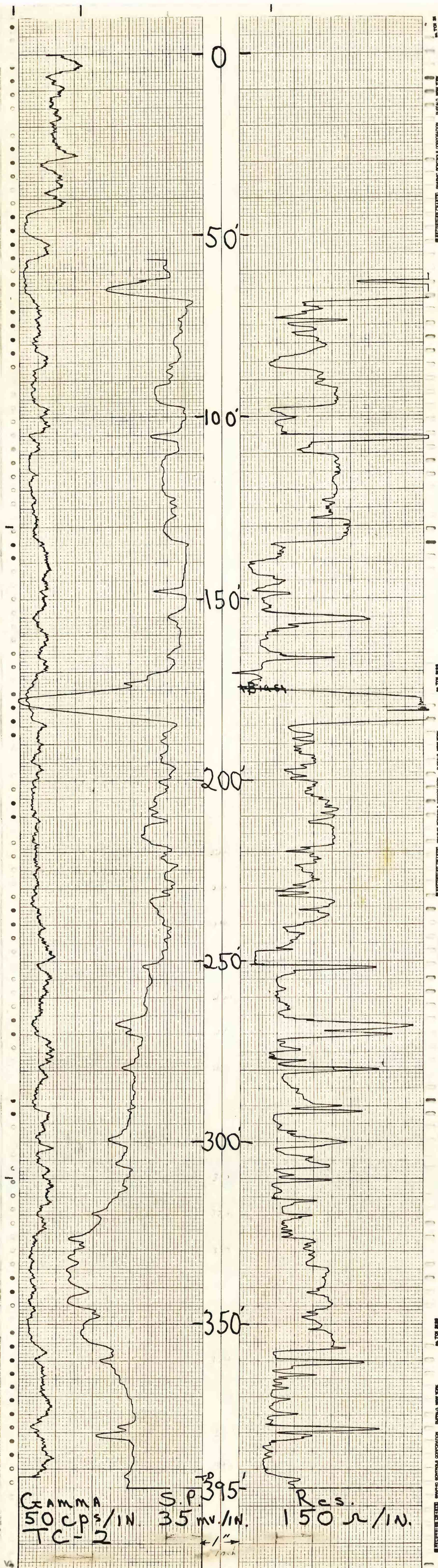
Date logged: Aug. 28, 1977

Casing: none

Drilling fluids: water, mud

Depth determined by driller: 400 ft

Water level: 63 ft



Gamma 50 cps/in. TC-2
S.P. 35 mv./in.
Res. 150 Ω/in.
395'