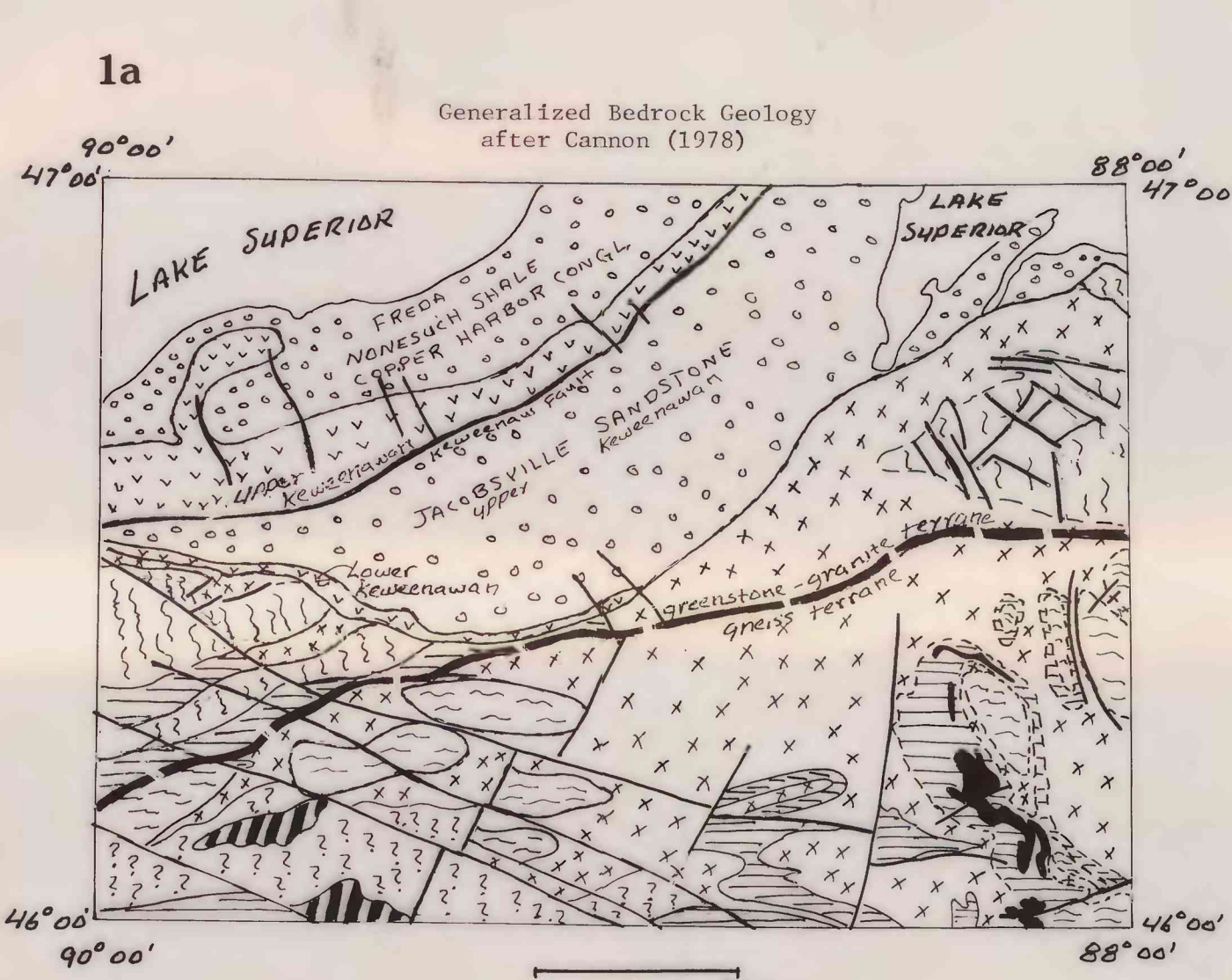
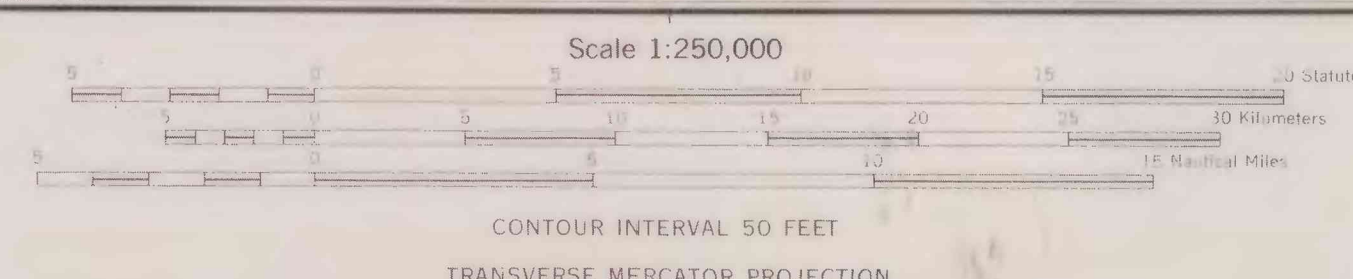


EXPLANATION

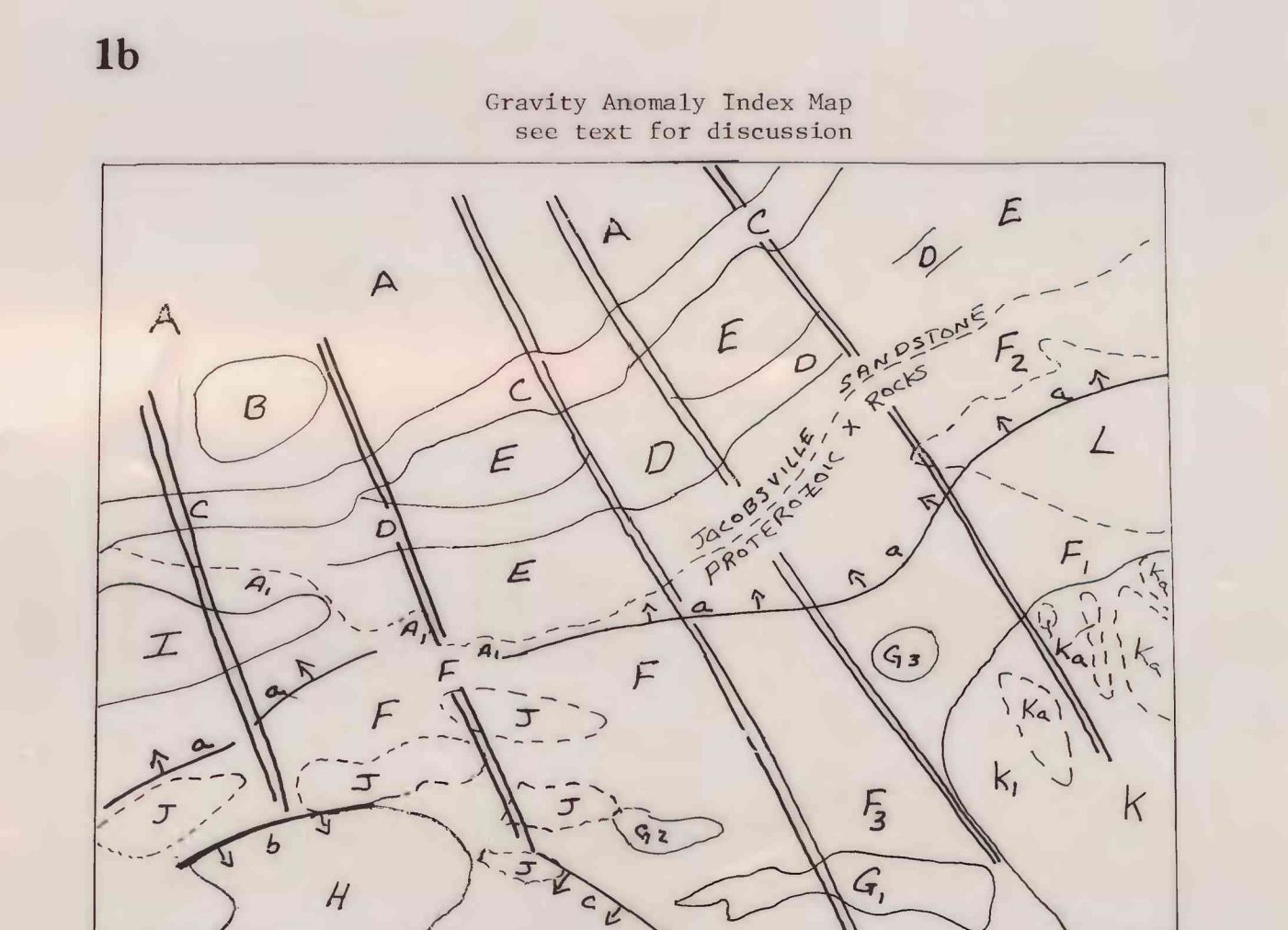
Bouguer gravity contours—contour interval 2 milligals. Dashed in areas of sparse data. Tickmarks indicate lower gravity.

Gravity station (see table 1 for sources of data)



Explanation for figures 1A and 3

Stratigraphic column	Description of rock units	Associated gravity features
PROTEROZOIC Keweenaw Archaean	Bed brown sandstone, arkose, siliceous conglomerate and shale, Upper Keweenaw. Keweenaw lava flows. Primarily mafic volcanic rocks containing minor felsic zones. Divided into middle and lower Keweenaw, as shown. Unconformity (1) Graywacke, slate, siltstone, conglomerate, and thin to massive beds of iron formation. (2) Felsic to mafic volcanic rocks. (3) Intrusive rocks. Striped pattern indicates granitic rock type; solid pattern indicates primarily mafic rock type. Unconformity? (4) Gneiss of uncertain age. May be either Proterozoic or Archaean. Unconformity? (a) Granitic to quartz monzonitic intrusive rocks; tonalitic migmatite amphibolite. Rocks of greenstone-granite terrane north of the boundary between the greenstone-granite terrane and the gneiss terrane. (b) Nearly tonalitic to granitic gneiss with lesser amphibolitic and pyroxenitic gneiss, gneissite, and minor massive granitic rock.	E, B A, A ₁ , D (1) F, G, K (2) Ev (3) H I L, Ka, J



Explanation for figure 1B

- Outlines of gravity anomalies discussed in text.
- Outlines of geologic features or geologic contacts that are discussed in the text.
- Lines marking the location of steep gravity gradients. Arrows point down the gradient. Letters a, b, and c refer to discussions in text.
- Lines marking location of major structural breaks (cryptic faults) as determined from gravity data and mapped geology. See text for further discussion.

FIGURE 1. Geologic map, stratigraphic column, description of rock units, and gravity anomaly index map for the Iron River 1° x 2° quadrangle.

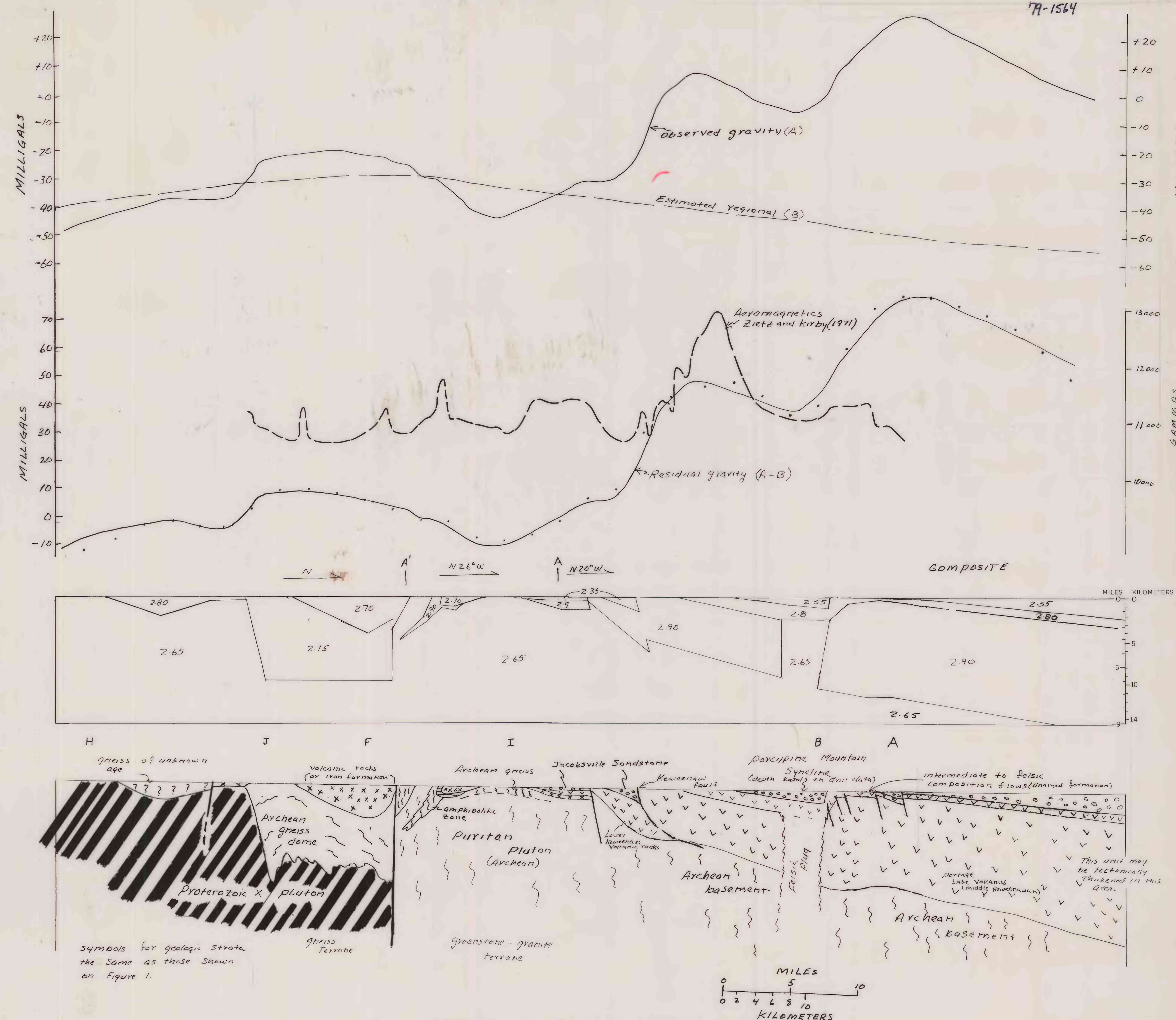


FIGURE 3. Gravity profile with 2-dimensional gravity model and geologic cross section from western part of the Iron River quadrangle.

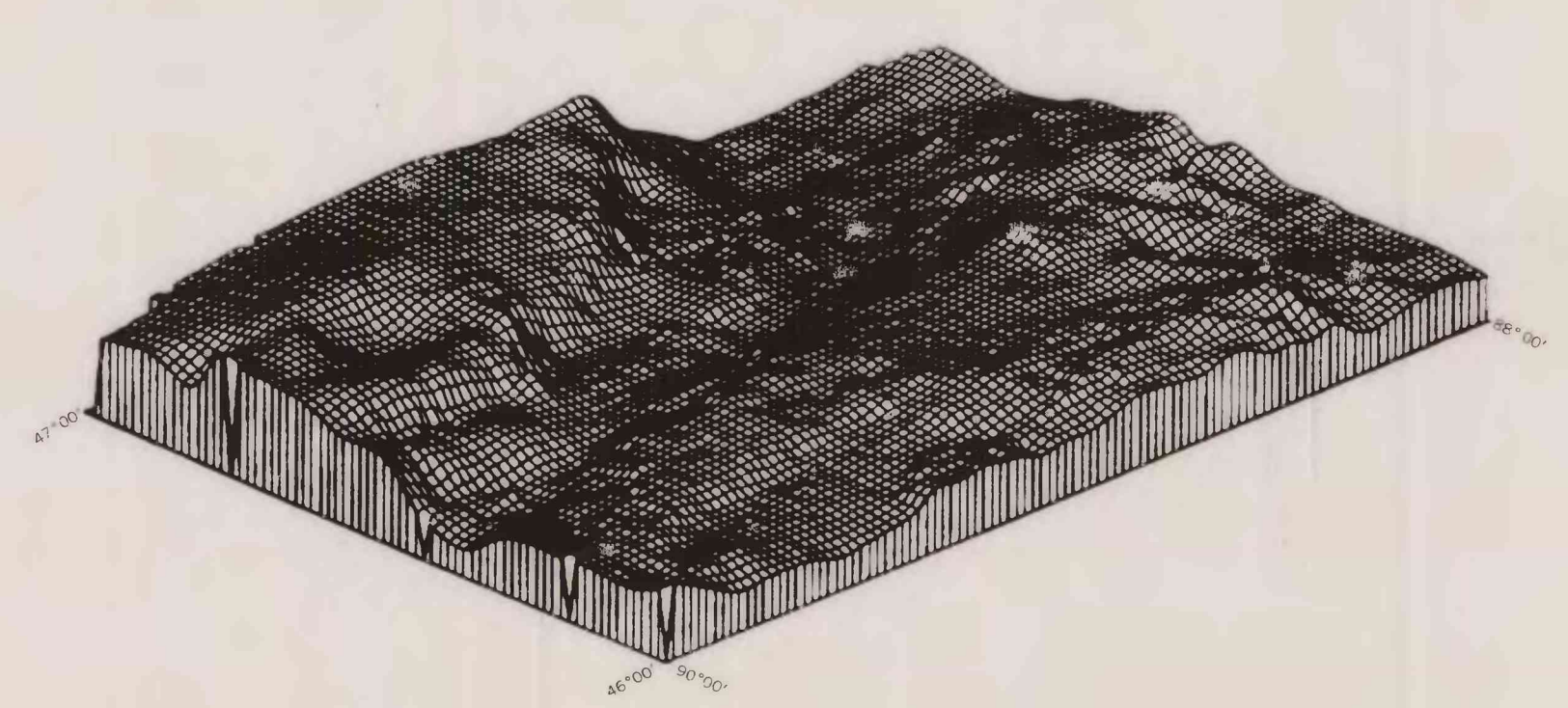


FIGURE 2. Isometric diagram of Bouguer gravity surface.

SIMPLE BOUGUER GRAVITY ANOMALY MAP AND GEOLOGIC INTERPRETATION; IRON RIVER 1° BY 2° QUADRANGLE, NORTHERN MICHIGAN AND WISCONSIN

By J. S. KLASNER and Wm. J. JONES