

Figure 40.--Gamma-gamma log no. 1 of drill-hole B-D18

Hole location: 150 FNL, 1,500 FEL, sec. 22,
T. 14 N., R. 90 W., 6th P.M.,
Carbon County, Wyoming

Detector type: scintillation

Time constant: 4 sec

Collar elevation: 7,190 ft

Source type: Cs-137

Date drilled: September 19-21, 1977

Source size: 29.16 millicuries

Open-hole diameter: 4-3/4 in.

Source-to-detector spacing: 13 in.

Casing: 5-in. steel, 0-16 ft

Logging speed: 20 ft/min

Drilling fluids: air and water

Calibration: see log

Depth determined by driller: 960 ft

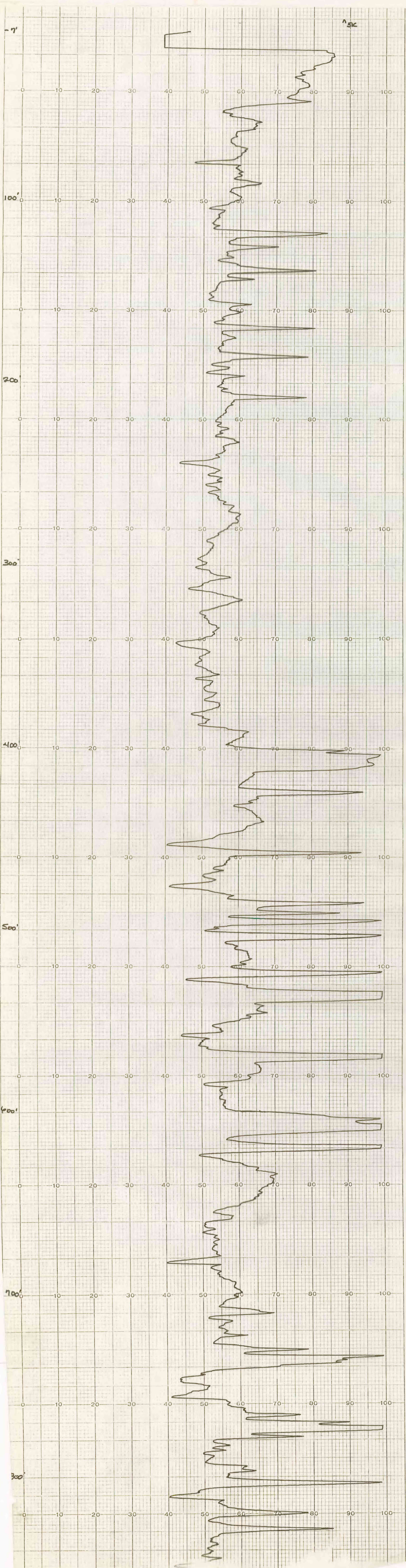
Logged by: J. Jones

Water level: flowing

Logger unit: well reconnaissance

Logged depth: 876 ft

Date logged: October 2, 1977



U.S. GEOLOGICAL SURVEY
WATER RESOURCES DIVISION
MONTGOMERY, ALABAMA 36104
CHART NO. 2223-NP
CONTRACT NO. 14-01-001-10000

U.S. GEOLOGICAL SURVEY
WATER RESOURCES DIVISION
MONTGOMERY, ALABAMA 36104
CHART NO. 2223-NP
CONTRACT NO. 14-01-001-10000