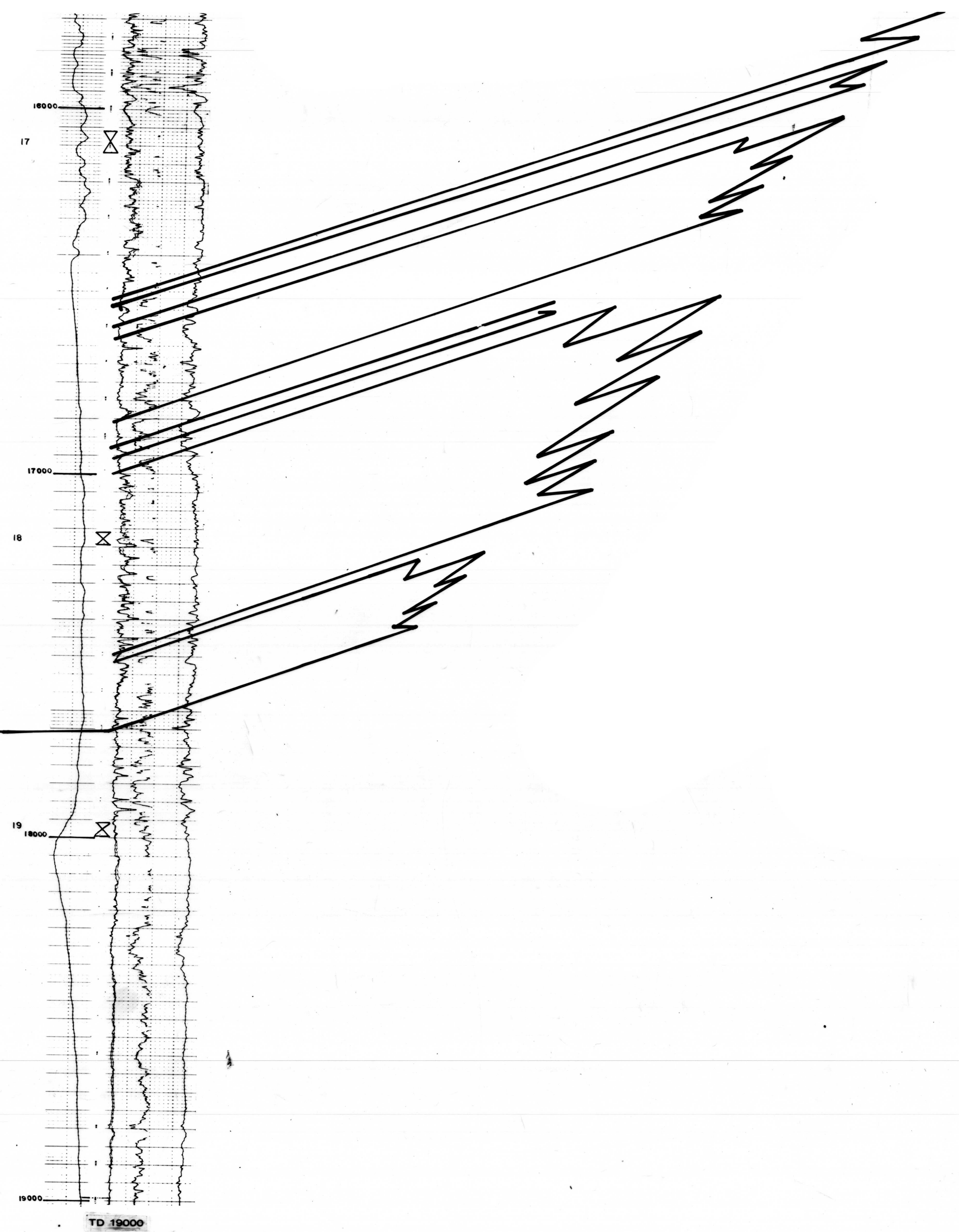


NAMED OLDER ROCKS

HILLIARD SHALE



DST 01 7340-7400  
 075 50 504 44 3 HCFB  
 Rec 225 Ft GCN  
 151P 2287 251P 2822 28P 3507 28P 3507

DST 02 7872-8143  
 075 50 504 44 HCFB  
 Rec 276 Ft GCN  
 151P 180 251P 208  
 151P 208 251P 285  
 151P 285 251P 324 18P 4186 28P 4182

DST 03 8924-9008  
 Rec 21 Ft GCN  
 151P 94-248 27P 185-264  
 151P 842-860 251P 523-593 28P 4946 28P 4946

DST 04 10978-11070  
 Rec 90 Ft GCN 2800 Ft U  
 151P 1365-1365 251P 1865-1868  
 151P 6184 251P 2779 18P 7000 28P 7533  
 28P 7000 GCN

Cora 01 5000-5058 Rec 40 Ft  
 Cora 02 5058-5118 Rec 37.8 Ft  
 Cora 03 5118-5148 Rec 30 Ft  
 Cora 04 7083-7140 Rec 57 Ft  
 Cora 05 7340-7400 Rec 60 Ft  
 Cora 06 8029-8083 Rec 54 Ft  
 Cora 07 8083-8143 Rec 60 Ft  
 Cora 08 8920-8980 Rec 60 Ft  
 Cora 09 8980-9008 Rec 28 Ft  
 Cora 10 10140-10199 Rec 59 Ft  
 Cora 11 10199-10259 Rec 60 Ft  
 Cora 12 10968-11028 Rec 60 Ft  
 Cora 13 11028-11070 Rec 42 Ft  
 Cora 14 13095-13154 Rec 40 Ft  
 Cora 15 13154-13202 Rec 44 Ft  
 Cora 16 14887-14936 Rec 59 Ft  
 Cora 17 16062-16121 Rec 59 Ft  
 Cora 18 17163-17193 Rec 30 Ft  
 Cora 19 17959-17996 Rec 12 Ft

PLATE 1 - - NORTHWESTERN PART

SECTION B - B'  
 SUBSURFACE AND SURFACE CORRELATIONS OF SOME UPPER CRETACEOUS  
 AND TERTIARY ROCKS, NORTHERN GREEN RIVER BASIN, WYOMING

By  
**B. E. LAW**

1979