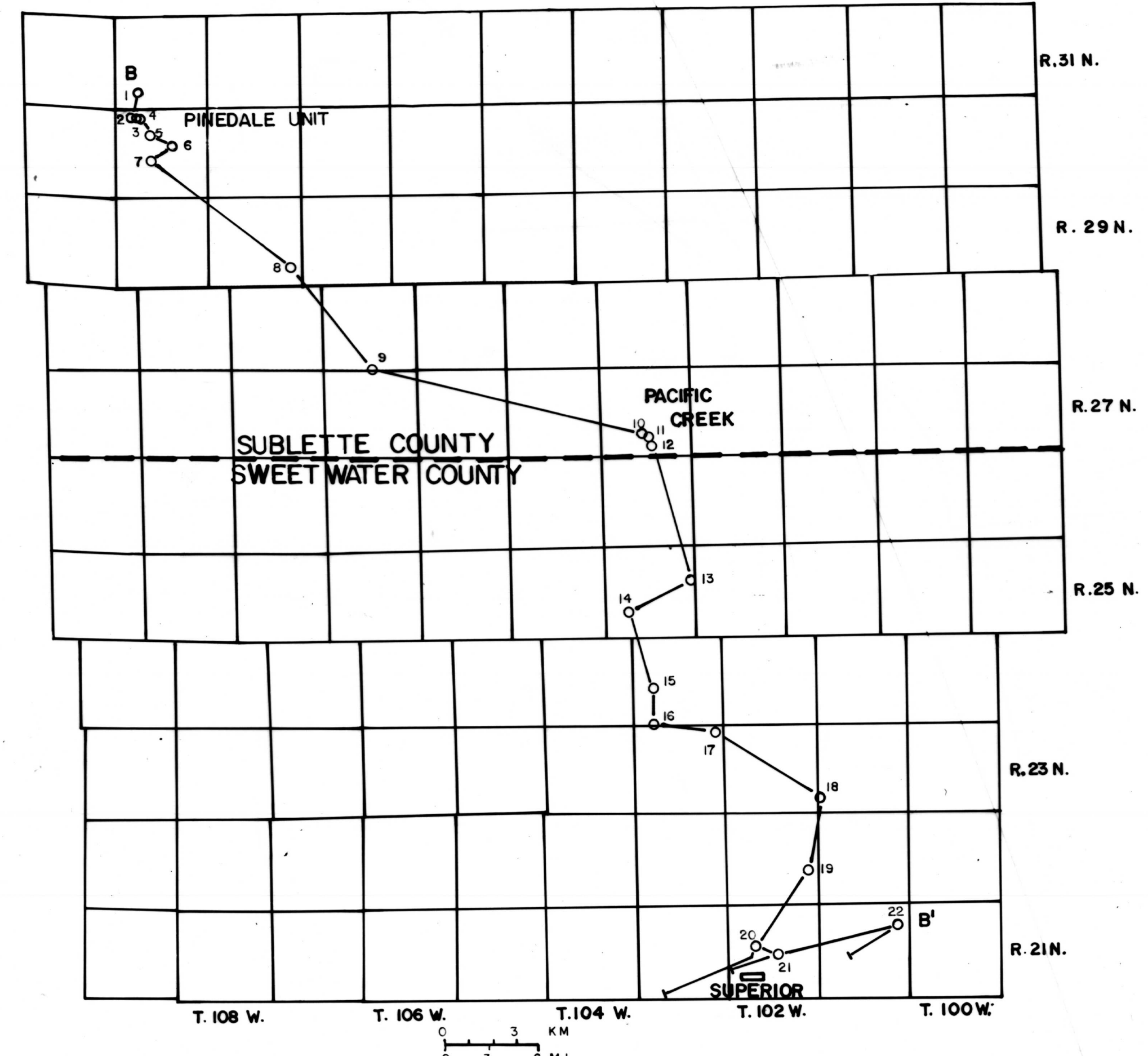
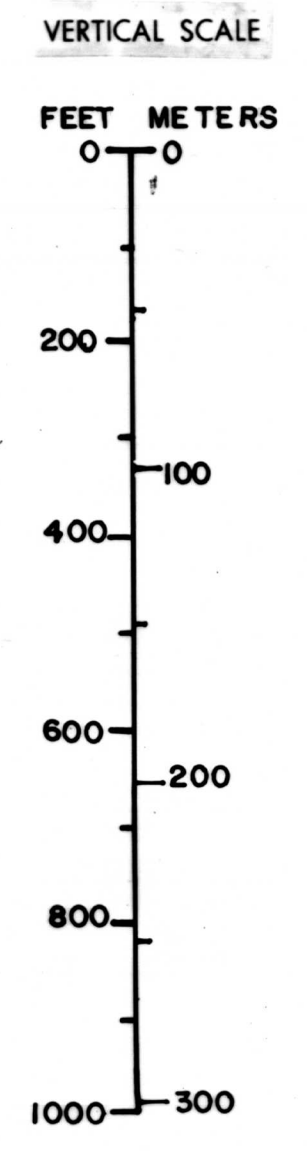
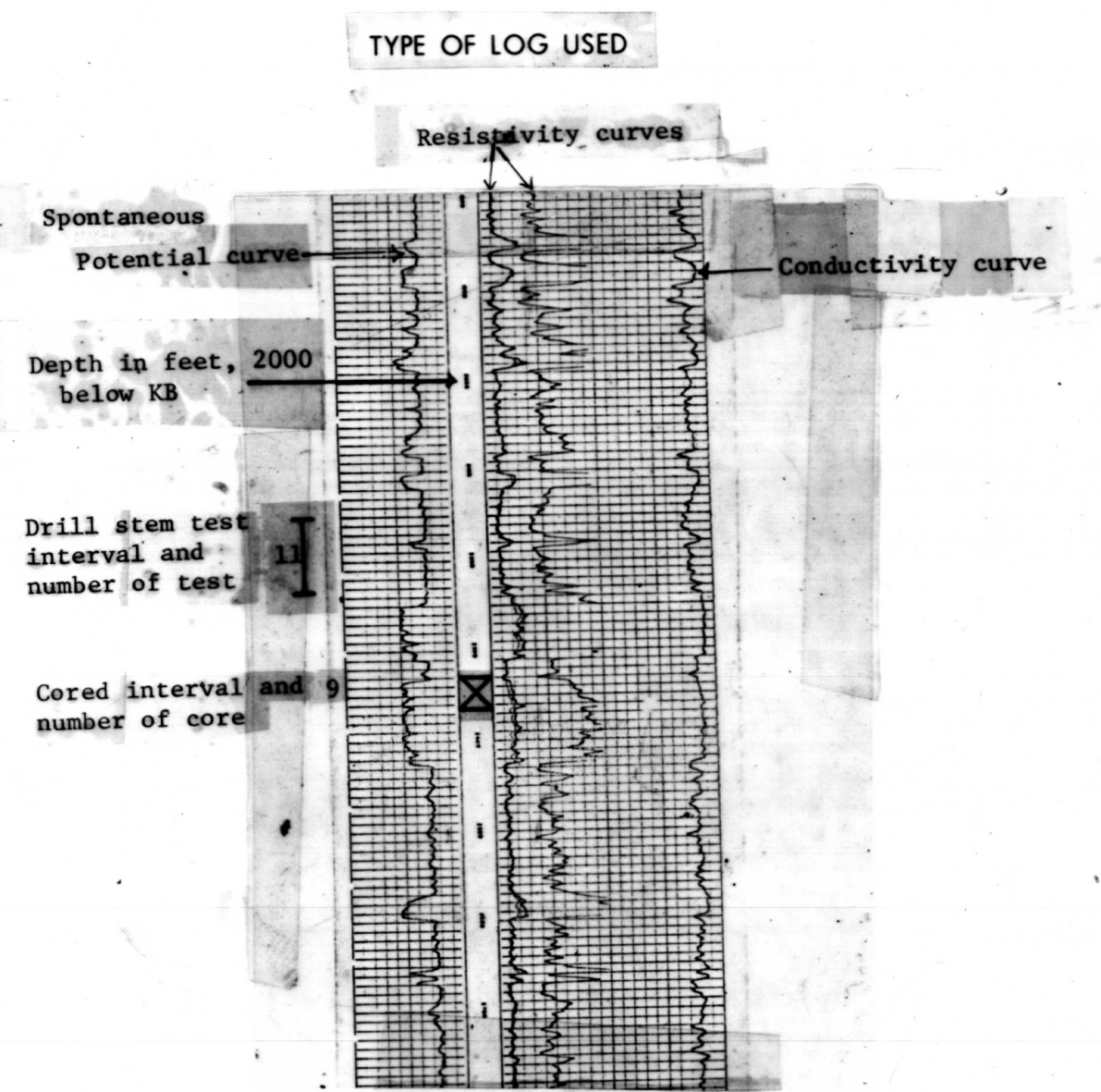


- Correlation line--dashed where probable; queried where uncertain;
 C - Coal correlation marker;
 Unconformity, queried where correlation is uncertain
 Abandoned gas well
 Abandoned oil and gas test well
- KB Kelly bushing, elevation in feet
 GR Ground, elevation in feet
 DF Derrick floor, elevation in feet
 TD Total depth drilled, in feet
 LTD Logged total depth, in feet
 DST Drill stem test
 Rec Recovered
 IFF Initial flow pressure
 FPF Final flow pressure
 ISIP Initial shut in pressure
 FSIP Final shut in pressure
 IHP Initial hydrostatic pressure
 FHP Final hydrostatic pressure
 PTF Perforations tested flowing
 GTS Gas to surface
 GCM Gas cut mud
 SDCM Slightly gas cut mud
 VSGCM Very slightly gas cut mud
 GCMWR Gas cut salt water
 HGCM Highly gas cut mud
 VSGMCM Very slightly gas and water cut mud
 SDCM Slightly gas cut water
 WCM Water cut mud
 W CUSH Water cushion
 MCM CUSH Mud cut water cushion
 MW Muddy water
 BHT Bottom hole temperature
 bbls Barrels
 MCFD Thousand cubic feet of gas per day
- METRIC EQUIVALENTS
 1 ft. = 0.3048 m
 1 psi = 7.03 x 10⁻² Kg/cm²
 1 MCFD = 28.32 m³ of gas per day

EXPLANATION

- LITHOLOGY
- Conglomerate in sandstone
 - Sandstone
 - Siltstone
 - Shale
 - Carbonaceous shale
 - Coal
 - Concretions: Ironstone (solid)
 - Siltstone (dotted)



Index map showing location of cross section and control points
 O-Drill hole location and reference number of well or measured section
 -Location of measured section. Top of section indicated at intersection with line of cross section

References

Roehler, Henry W., 1978a, Correlations of coal beds in the Rock Springs uplift, Sweetwater County, Wyoming: U.S. Geological Survey Open-File Report 78-247.

Roehler, Henry W., 1978b, Correlations of coal beds in the Fort Union, Lance, and Almond Formations in measured sections on the east flank of the Rock Springs uplift, Sweetwater County, Wyoming: U.S. Geological Survey Open-File Report 78-248.

PLATE 2 - - SOUTHEASTERN PART

SECTION B - B' SUBSURFACE AND SURFACE CORRELATIONS OF SOME UPPER CRETACEOUS AND TERTIARY ROCKS, NORTHERN GREEN RIVER BASIN, WYOMING

By
B. E. LAW
 1979