

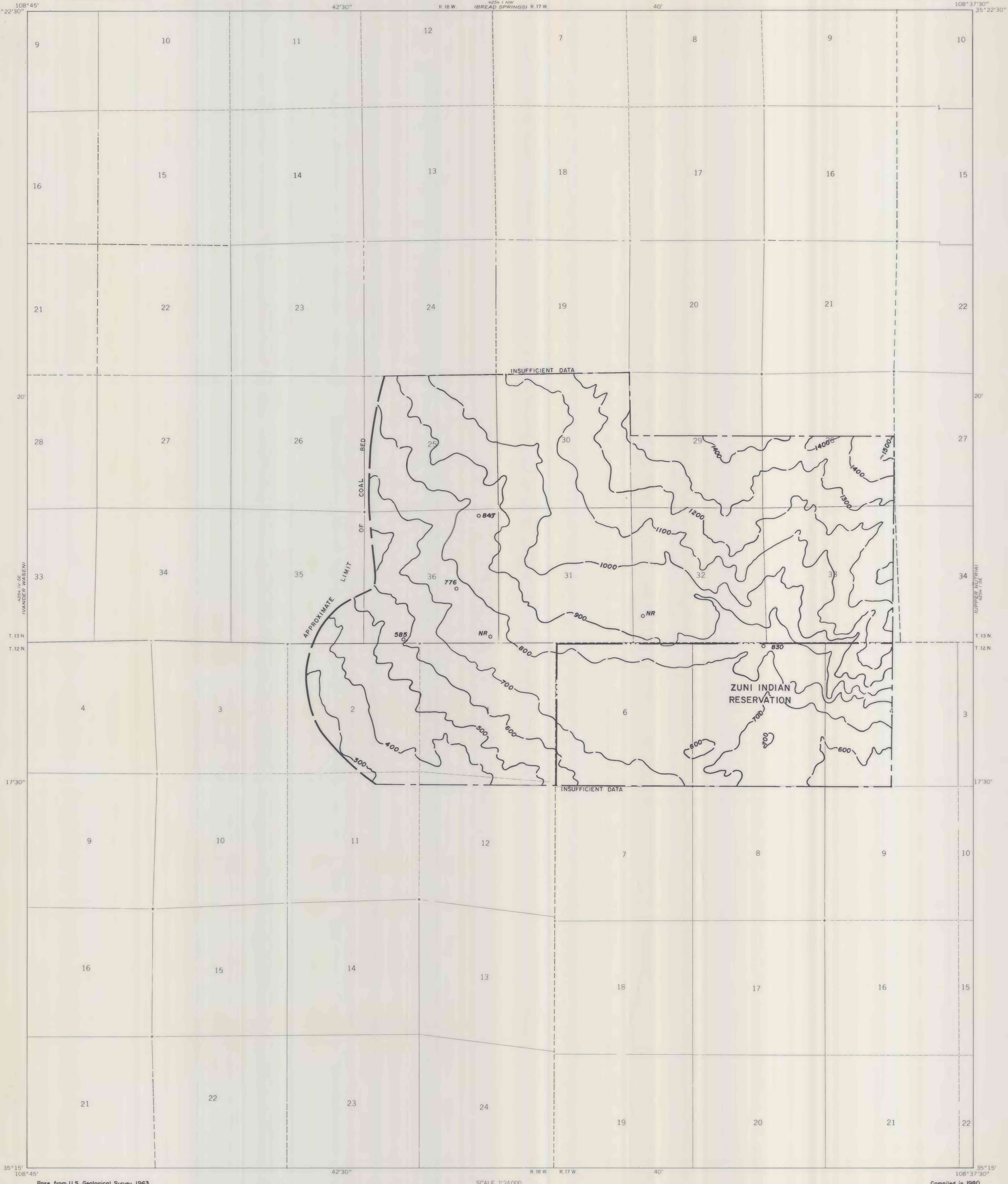
This report has not been edited for conformity with Geological Survey editorial standards or stratigraphic nomenclature.

EXPLANATION

**500**—  
OVERBURDEN ISOPACHS—Showing thickness of overburden, in feet, from the surface to the top of the Crevasse Canyon Dilco No. 3 coal bed (refer to plate 5). Isopach interval 100 feet (30.5 meters). Isopachs dashed where inferred. Stripping limit is 200 feet (61 meters).

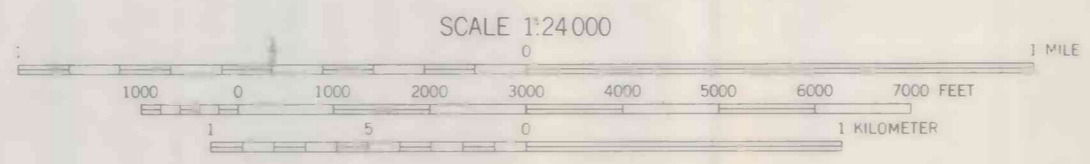
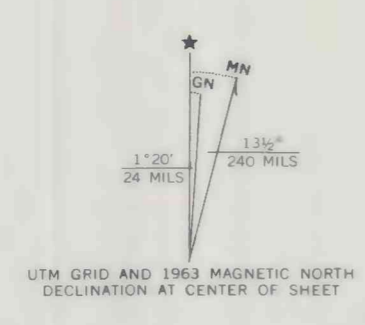
**0776**  
DRILL HOLE—Showing thickness of overburden, in feet, of the Crevasse Canyon Dilco No. 3 coal bed. NR indicates no record.

To convert feet to meters, multiply feet by 0.3048.



Base from U.S. Geological Survey, 1963

Compiled in 1980



**COAL RESOURCE OCCURRENCE MAP OF THE PINEHAVEN  
QUADRANGLE, MCKINLEY COUNTY, NEW MEXICO  
BY  
BERGE EXPLORATION, INC.  
1980**

PLATE 6  
ISOPACH MAP OF OVERBURDEN  
OF THE CREVASSE CANYON  
DILCO NO. 3 COAL BED