

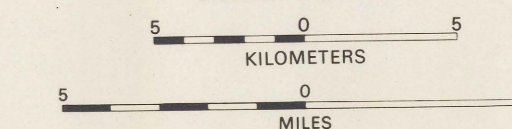
**POLITICAL UNITS, 1980
MARION, OHIO**

OHIO (39)

Reference Number	County
39003	Allen
39005	Ashland
39011	Auglaize
39021	Champaign
39023	Clark
39031	Coshocton
39033	Crawford
39041	Delaware
39049	Franklin
39063	Hancock
39065	Hardin
39075	Holmes
39077	Huron
39083	Knox
39089	Licking
39091	Logan
39097	Madison
39101	Marion
39103	Medina
39117	Morrow
39119	Muskingum
39137	Putnam
39139	Richland
39147	Seneca
39159	Union
39169	Wayne
39175	Wyandot

The first two digits of the reference numbers refer to states; the last three digits to counties.

SCALE 1:250 000

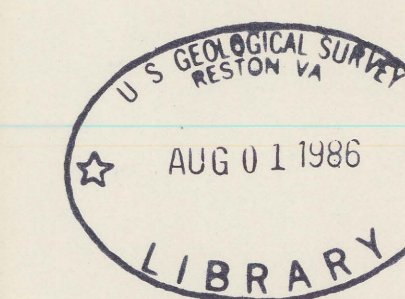


Political unit boundaries compiled from the 1:250 000-scale topographic map. Political unit reference numbers compiled from Geographic Identification Code Scheme, Edition 1980, U. S. Department of Commerce, Bureau of the Census.

This map is keyed to U. S. Geological Survey 1:250 000-scale topographic map, Marion (NK 17-10).

Information on the Land Use Series available from National Cartographic Information Center, U. S. Geological Survey, National Center, Reston, Virginia 22092.

UNITED STATES
DEPARTMENT OF THE INTERIOR
GEOLOGICAL SURVEY
OPEN FILE 80-054-2
LAND USE SERIES



**POLITICAL UNITS, 1980
MARION, OHIO**

80-054-2

80-054-2

80-054

M(200)585
250
M339u
sheet 2
c.1

M(200)
R290
80-054
542
c.1