

EXPLANATION

6° GL 6810
 R 316.0
 C 5.0 (MS)
 R 135.0
 C 9.0 (BK)
 R 34.0
 TD 499

GL 6520 (Est)
 R 1.0
 C 2.5 (LS)
 R 1.0
 R NR

COAL TEST HOLE - Showing drill-hole data, in feet. Index number refers to hole on plate 3 of CRO map or in table of text. Letters designate name of coal bed as listed below.

OUTCROP MEASURED SECTION - Showing rock interval and coal thickness, in feet. Index number refers to section on plate 3 of CRO map or in table of text. Letters designate name of coal bed as listed below. Bar indicates length and direction of section if known.

GL - Ground level elevation. (Est) - Estimated from topographic base.

NR - No Record
 R - Rock Interval
 C - Coal Interval
 TD - Total Depth

TEST HOLE AND MEASURED-SECTION DATA SYMBOLS

S - Smirl
 MS - Middle Smirl
 LS - Lower Smirl
 BK - Bald Knoll
 L - Local

COAL BED OR ZONE SYMBOLS AND NAMES

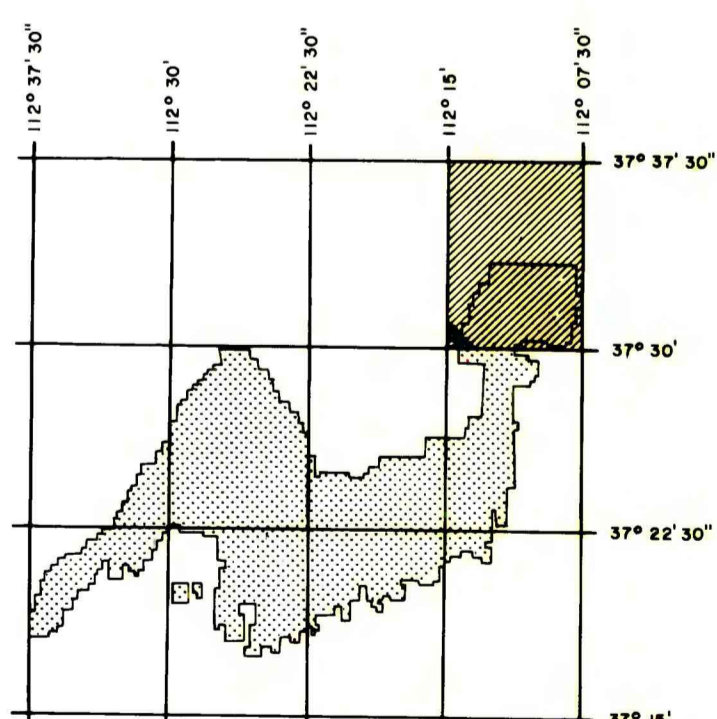
3
 10.2 - LS

TRACE OF COAL BED OUTCROP - Showing thickness of coal, in feet, measured at triangle. Index number refers to data point on plate 3 of CRO map or in table of text. Letters designate the name of the coal bed as listed above. Arrow points toward the coal-bearing area. Long-dashed line indicates inferred outcrop; short dashed line indicates author inferred outcrop. Trace of coal zone contact dotted when concealed by alluvium.

BURNED AND CLINKERED COAL - Showing area of baked and fused rock (v symbol). Dotted line indicates the inferred limit of burning.

TRACE OF FAULT - Symbols designate direction of movement when known; bar and ball on down-thrown side; dotted where concealed, dashed where inferred.

To convert feet to meters, multiply feet by 0.3048.



Base from U.S. Geological Survey, 1966
SCALE 1:24,000
Compiled in 1978/1979

**COAL RESOURCE OCCURRENCE MAP OF THE BRYCE POINT QUADRANGLE,
KANE AND GARFIELD COUNTIES, UTAH**

BY
MEIJI RESOURCE CONSULTANTS

1979

BRYCE POINT, UTAH