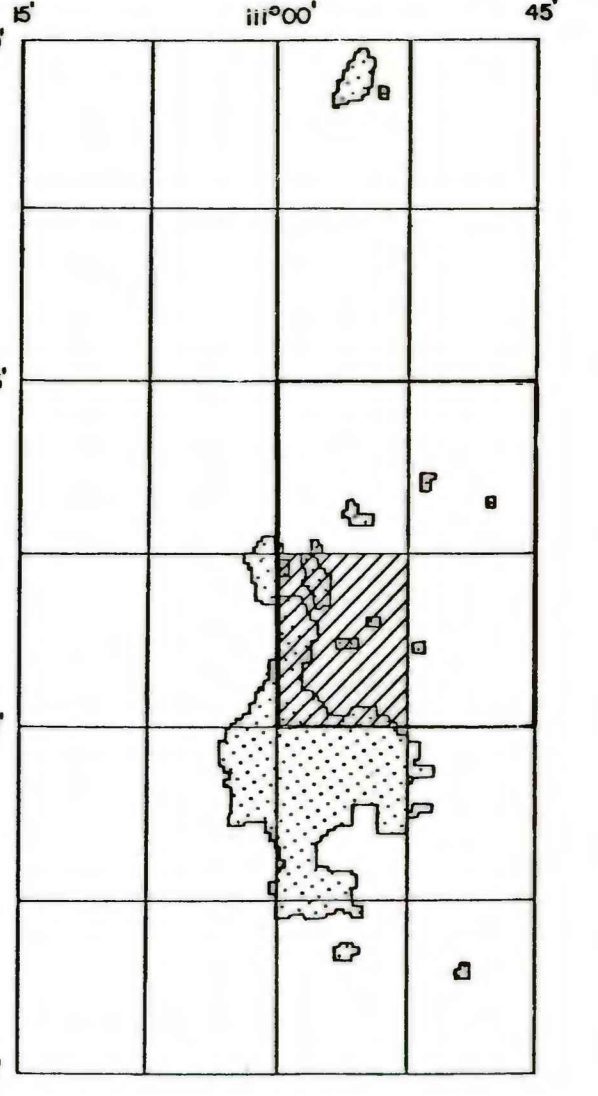
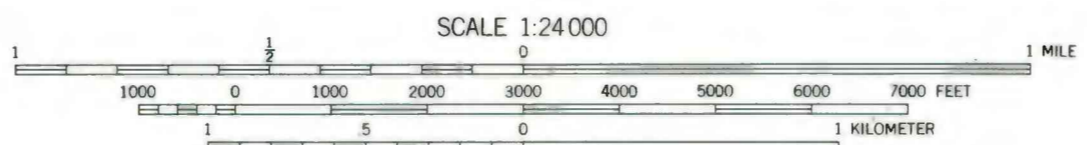


EXPLANATION

- (106)
GL 6221
R 154.5
C 2.0(Fe)[u]
R 16.5
C 1.0(Fe)[u]
R 4.5
C 2.0(Fe)[u]
R 5323.5
TD 6804
- (107)
NR
C 0.5(Fe)[u]
R 11.0
C 0.7
NR
- (108)
NR
R 1.0
C 4.0(Em)[2]
R 1.0
C 1.5(Em)[2]
R 1.0
C 1.0(Em)[2]
R 1.0
- (109)
NR
R 1.0
C 0.8(Em)[2]
R 1.0
- (110)
NR
R 1.0
C 0.5(Em)[2]
R 1.0
- (111)
NR
R 1.0
C 0.5(Em)[2]
R 1.0
- (112)
NR
R 1.0
C 0.5(Em)[2]
R 1.0
- (113)
NR
R 1.0
C 0.5(Em)[2]
R 1.0
- (114)
NR
R 1.0
C 0.5(Em)[2]
R 1.0
- (115)
NR
R 1.0
C 0.5(Em)[2]
R 1.0
- (116)
NR
R 1.0
C 0.5(Em)[2]
R 1.0
- (117)
NR
R 1.0
C 0.5(Em)[2]
R 1.0
- (118)
NR
R 1.0
C 0.5(Em)[2]
R 1.0
- (119)
NR
R 1.0
C 0.5(Em)[2]
R 1.0
- (120)
NR
R 1.0
C 0.5(Em)[2]
R 1.0
- (121)
NR
R 1.0
C 0.5(Em)[2]
R 1.0
- (122)
NR
R 1.0
C 0.5(Em)[2]
R 1.0
- (123)
NR
R 1.0
C 0.5(Em)[2]
R 1.0
- (124)
NR
R 1.0
C 0.5(Em)[2]
R 1.0
- (125)
NR
R 1.0
C 0.5(Em)[2]
R 1.0
- (126)
NR
R 1.0
C 0.5(Em)[2]
R 1.0
- (127)
NR
R 1.0
C 0.5(Em)[2]
R 1.0
- (128)
NR
R 1.0
C 0.5(Em)[2]
R 1.0
- (129)
NR
R 1.0
C 0.5(Em)[2]
R 1.0
- (130)
NR
R 1.0
C 0.5(Em)[2]
R 1.0
- (131)
NR
R 1.0
C 0.5(Em)[2]
R 1.0
- (132)
NR
R 1.0
C 0.5(Em)[2]
R 1.0
- (133)
NR
R 1.0
C 0.5(Em)[2]
R 1.0
- (134)
NR
R 1.0
C 0.5(Em)[2]
R 1.0
- (135)
NR
R 1.0
C 0.5(Em)[2]
R 1.0
- (136)
NR
R 1.0
C 0.5(Em)[2]
R 1.0
- (137)
NR
R 1.0
C 0.5(Em)[2]
R 1.0
- (138)
NR
R 1.0
C 0.5(Em)[2]
R 1.0
- (139)
NR
R 1.0
C 0.5(Em)[2]
R 1.0
- (140)
NR
R 1.0
C 0.5(Em)[2]
R 1.0
- (141)
NR
R 1.0
C 0.5(Em)[2]
R 1.0
- (142)
NR
R 1.0
C 0.5(Em)[2]
R 1.0
- (143)
NR
R 1.0
C 0.5(Em)[2]
R 1.0
- (144)
NR
R 1.0
C 0.5(Em)[2]
R 1.0
- (145)
NR
R 1.0
C 0.5(Em)[2]
R 1.0
- (146)
NR
R 1.0
C 0.5(Em)[2]
R 1.0
- (147)
NR
R 1.0
C 0.5(Em)[2]
R 1.0
- (148)
NR
R 1.0
C 0.5(Em)[2]
R 1.0
- (149)
NR
R 1.0
C 0.5(Em)[2]
R 1.0
- (150)
NR
R 1.0
C 0.5(Em)[2]
R 1.0
- (151)
NR
R 1.0
C 0.5(Em)[2]
R 1.0
- (152)
NR
R 1.0
C 0.5(Em)[2]
R 1.0
- (153)
NR
R 1.0
C 0.5(Em)[2]
R 1.0
- (154)
NR
R 1.0
C 0.5(Em)[2]
R 1.0
- (155)
NR
R 1.0
C 0.5(Em)[2]
R 1.0
- (156)
NR
R 1.0
C 0.5(Em)[2]
R 1.0
- (157)
NR
R 1.0
C 0.5(Em)[2]
R 1.0
- (158)
NR
R 1.0
C 0.5(Em)[2]
R 1.0
- (159)
NR
R 1.0
C 0.5(Em)[2]
R 1.0
- (160)
NR
R 1.0
C 0.5(Em)[2]
R 1.0
- (161)
NR
R 1.0
C 0.5(Em)[2]
R 1.0
- (162)
NR
R 1.0
C 0.5(Em)[2]
R 1.0
- (163)
NR
R 1.0
C 0.5(Em)[2]
R 1.0
- (164)
NR
R 1.0
C 0.5(Em)[2]
R 1.0
- (165)
NR
R 1.0
C 0.5(Em)[2]
R 1.0
- (166)
NR
R 1.0
C 0.5(Em)[2]
R 1.0
- (167)
NR
R 1.0
C 0.5(Em)[2]
R 1.0
- (168)
NR
R 1.0
C 0.5(Em)[2]
R 1.0
- (169)
NR
R 1.0
C 0.5(Em)[2]
R 1.0
- (170)
NR
R 1.0
C 0.5(Em)[2]
R 1.0
- (171)
NR
R 1.0
C 0.5(Em)[2]
R 1.0
- (172)
NR
R 1.0
C 0.5(Em)[2]
R 1.0
- (173)
NR
R 1.0
C 0.5(Em)[2]
R 1.0
- (174)
NR
R 1.0
C 0.5(Em)[2]
R 1.0
- (175)
NR
R 1.0
C 0.5(Em)[2]
R 1.0
- (176)
NR
R 1.0
C 0.5(Em)[2]
R 1.0
- (177)
NR
R 1.0
C 0.5(Em)[2]
R 1.0
- (178)
NR
R 1.0
C 0.5(Em)[2]
R 1.0
- (179)
NR
R 1.0
C 0.5(Em)[2]
R 1.0
- (180)
NR
R 1.0
C 0.5(Em)[2]
R 1.0
- (181)
NR
R 1.0
C 0.5(Em)[2]
R 1.0
- (182)
NR
R 1.0
C 0.5(Em)[2]
R 1.0
- (183)
NR
R 1.0
C 0.5(Em)[2]
R 1.0
- (184)
NR
R 1.0
C 0.5(Em)[2]
R 1.0
- (185)
NR
R 1.0
C 0.5(Em)[2]
R 1.0
- (186)
NR
R 1.0
C 0.5(Em)[2]
R 1.0
- (187)
NR
R 1.0
C 0.5(Em)[2]
R 1.0
- (188)
NR
R 1.0
C 0.5(Em)[2]
R 1.0
- (189)
NR
R 1.0
C 0.5(Em)[2]
R 1.0
- (190)
NR
R 1.0
C 0.5(Em)[2]
R 1.0
- (191)
NR
R 1.0
C 0.5(Em)[2]
R 1.0
- (192)
NR
R 1.0
C 0.5(Em)[2]
R 1.0
- (193)
NR
R 1.0
C 0.5(Em)[2]
R 1.0
- (194)
NR
R 1.0
C 0.5(Em)[2]
R 1.0
- (195)
NR
R 1.0
C 0.5(Em)[2]
R 1.0
- (196)
NR
R 1.0
C 0.5(Em)[2]
R 1.0
- (197)
NR
R 1.0
C 0.5(Em)[2]
R 1.0
- (198)
NR
R 1.0
C 0.5(Em)[2]
R 1.0
- (199)
NR
R 1.0
C 0.5(Em)[2]
R 1.0
- (200)
NR
R 1.0
C 0.5(Em)[2]
R 1.0



Base from U.S. Geological Survey, 1962



Compiled in 1978/79

This report has not been edited for conformity with U.S. Geological Survey editorial standards or stratigraphic nomenclature.

COAL RESOURCE OCCURRENCE MAP OF THE SOUTHWEST QUARTER OF THE MT. ELLEN 15-MINUTE QUADRANGLE, GARFIELD COUNTY, UTAH
BY
DAMES AND MOORE
1979

