

UNITED STATES DEPARTMENT OF THE INTERIOR

GEOLOGICAL SURVEY

SAUDI ARABIAN MISSION

MISCELLANEOUS DOCUMENT 5



PROGRAM PDP002:

GENDOC

by

M. A. M. Donzeau

U. S. Geological Survey

OPEN FILE REPORT 80-127

This report is preliminary and has not been edited or reviewed for conformity with Geological Survey standards or nomenclature.

PREPARED FOR
DIRECTORATE GENERAL OF MINERAL RESOURCES
MINISTRY OF PETROLEUM AND MINERAL RESOURCES
JIDDAH, SAUDI ARABIA
1979

U. S. GEOLOGICAL SURVEY
SAUDI ARABIAN PROJECT
MISCELLANEOUS DOCUMENT 5
(INTERAGENCY REPORT 283)

PROGRAM PDP002:

GENDOC

by

M. A. M. Donzeau

U. S. Geological Survey

OPEN FILE REPORT

80-127

**This report is preliminary and has
not been edited or reviewed for
conformity with Geological Survey
standards or nomenclature.**

U.S. Geological Survey
Jiddah, Saudi Arabia

1979

The work on which this report is based was performed in accordance with a cooperative agreement between the U. S. Geological Survey and the Ministry of Petroleum and Mineral Resources, Kingdom of Saudi Arabia.

This report is preliminary and has not been edited or reviewed for conformity with U. S. Geological Survey standards and nomenclature.

Program Documentation Manual

Program Number : PDP002
Program Name : GENDOC
Programmer : M. A. M. Donzeau
Language : FORTRAN IV PLUS
Computer/System : PDP-11/45
Date : 14 February 1978
Institution : U. S. Geological Survey/Saudi Arabian
Project
Location : Jiddah, Saudi Arabia

CONTENTS

	<u>Page</u>
ABSTRACT	1
SOURCE DECK LOCATION AND UPDATE STATUS	3
DESCRIPTION OF COMPUTED QUANTITIES	5
DESCRIPTION OF THE PROGRAM	7
Files used with GENDOC.	7
Program structure	7
Sequential procedure.	7
Index procedure	7
Printouts	20
Program execution and length.	20
PROGRAM OPERATION.	21
EXAMPLE.	23
SOURCE PROGRAM LISTING	65

ILLUSTRATIONS

Figure 1. GENDOC main program flow chart.	8
2. SEQUEN subprogram flow chart.	9
3. INDEX subprogram flow chart	10
4. INDEXI subprogram flow chart.	10
5. INBEGI subprogram flow chart.	11
6. INCOMI subprogram flow chart.	12
7. INDEXK subprogram flow chart.	13
8. ULKEY subprogram flow chart: ULKEY entry .	14
9. ULKEY subprogram flow chart: RLKEY and OCKEY entries	15
10. INDSEV subprogram flow chart.	16
11. INDONE subprogram flow chart.	17
12. The 15 options of GENDOC program.	18

PROGRAM PDP002: GENDOC

by

M. A. M. Donzeau

ABSTRACT

This program is designed to retrieve items of general documentation file, sequentially or by index.

Items are considered as alphanumerical text, and can be from one line to many pages length. To each item is associated one ID (1 to 20 characters), and from 1 to 10 keywords (of 1 to 12 characters each).

When the sequential option is chosen, the program prints the list of ID or full items (with ID and keywords) in the same order as they are stored on the general documentation file.

The indexed lists are lists of ID or full items, indexed by ID or by keywords. Retrieval is performed from complete ID (or keyword), or from a few first characters of ID (or keyword).

In the case of index by keywords, the program can retrieve items holding all the keywords of a specified list, or items holding one keyword only of a specified list (in this latter case, a retrieval is made for each keyword of the list).

SOURCE DECK LOCATION AND UPDATE STATUS

The FORTRAN source program GENDOC.FTN, the object module GENDOC.OBJ, and the task image GENDOC.TSK are on the system disk of the DGMR PDP-11/45 computer under the UIC [22,342].

No updates have been made to the program at this time.

DESCRIPTION OF COMPUTED QUANTITIES

There are no quantities computed by this program.

DESCRIPTION OF THE PROGRAM

Files used with GENDOC

This program uses any general documentation file built by the program GENADD (PDP001). It is a sequential unformatted file. Each item of this file is made up of one ID record, followed by one or more text records.

Every ID record has a variable length of 144 bytes maximum, and contains the following fields: ID (1 to 20 characters), number of text records, number of keywords, list of keywords (maximum 10 keywords of 1 to 12 characters each).

Every text record has a fixed length of 80 bytes.

The program GENDOC uses another kind of file, called the keyword file. This is a sequential formatted file built or read with the "index-by-keyword" option. The first record holds the creation date of the file, and has a fixed length of 12 bytes. Each following record has a fixed length of 16 bytes, and holds one keyword and its number of occurrences. The keywords are stored alphabetically.

Program structure

The main program flow-chart is shown in figure 1, and the flow-charts of the main routines in figures 2 to 11. The program options are given in figure 12.

The program GENDOC is made up of two independent parts: the sequential procedure, and the index procedure.

Sequential procedure

The sequential procedure outputs a sequential list of all ID's or of all the items of the general documentation file.

The file is read entirely. Each time an ID record is encountered, the ID only (ID list), or the ID and text (item list) are printed.

Index procedure

The index procedure is divided into two main parts: the index by ID and the index by keyword.

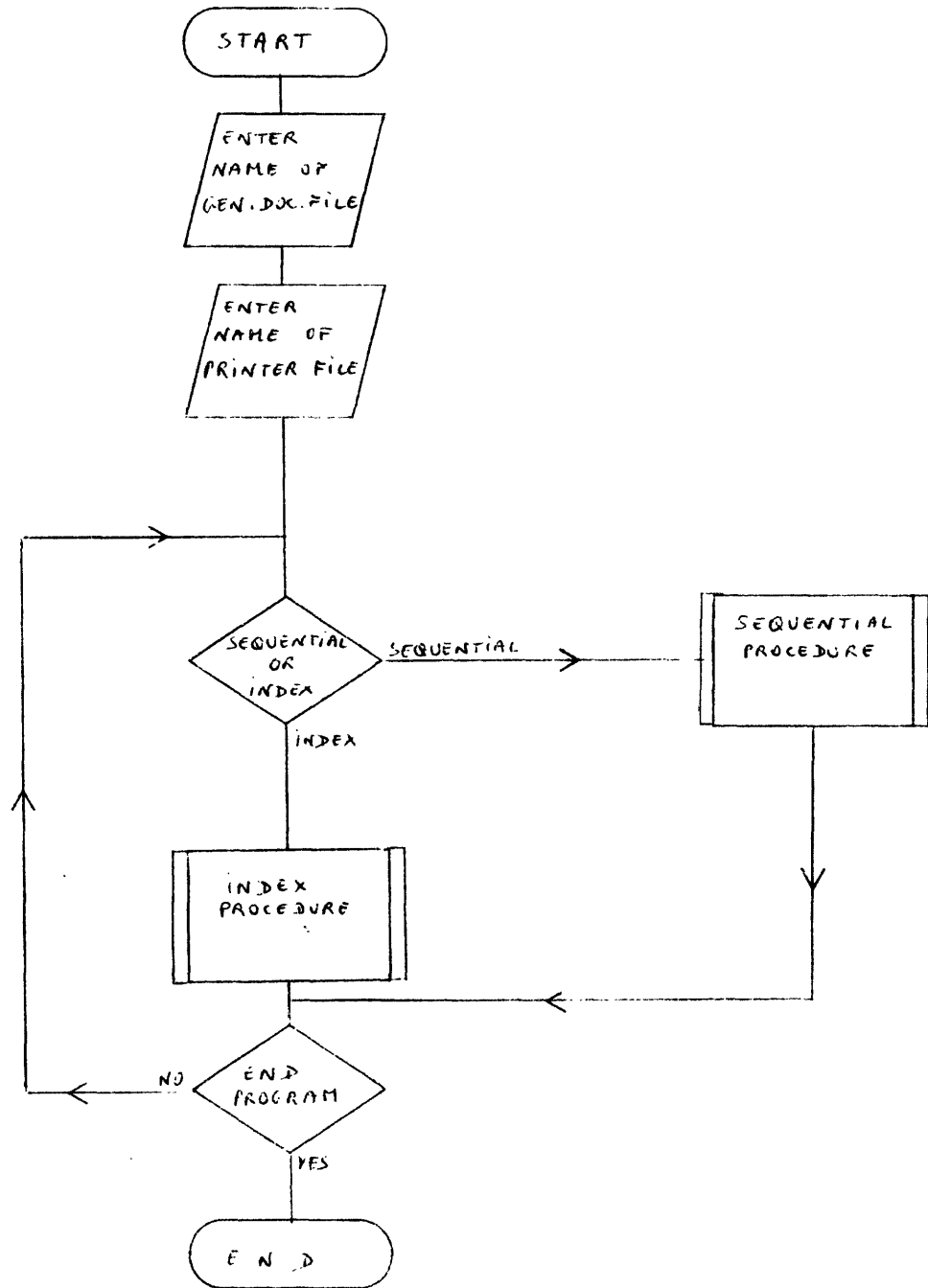


Figure 1.--GENDOC main program flow chart.

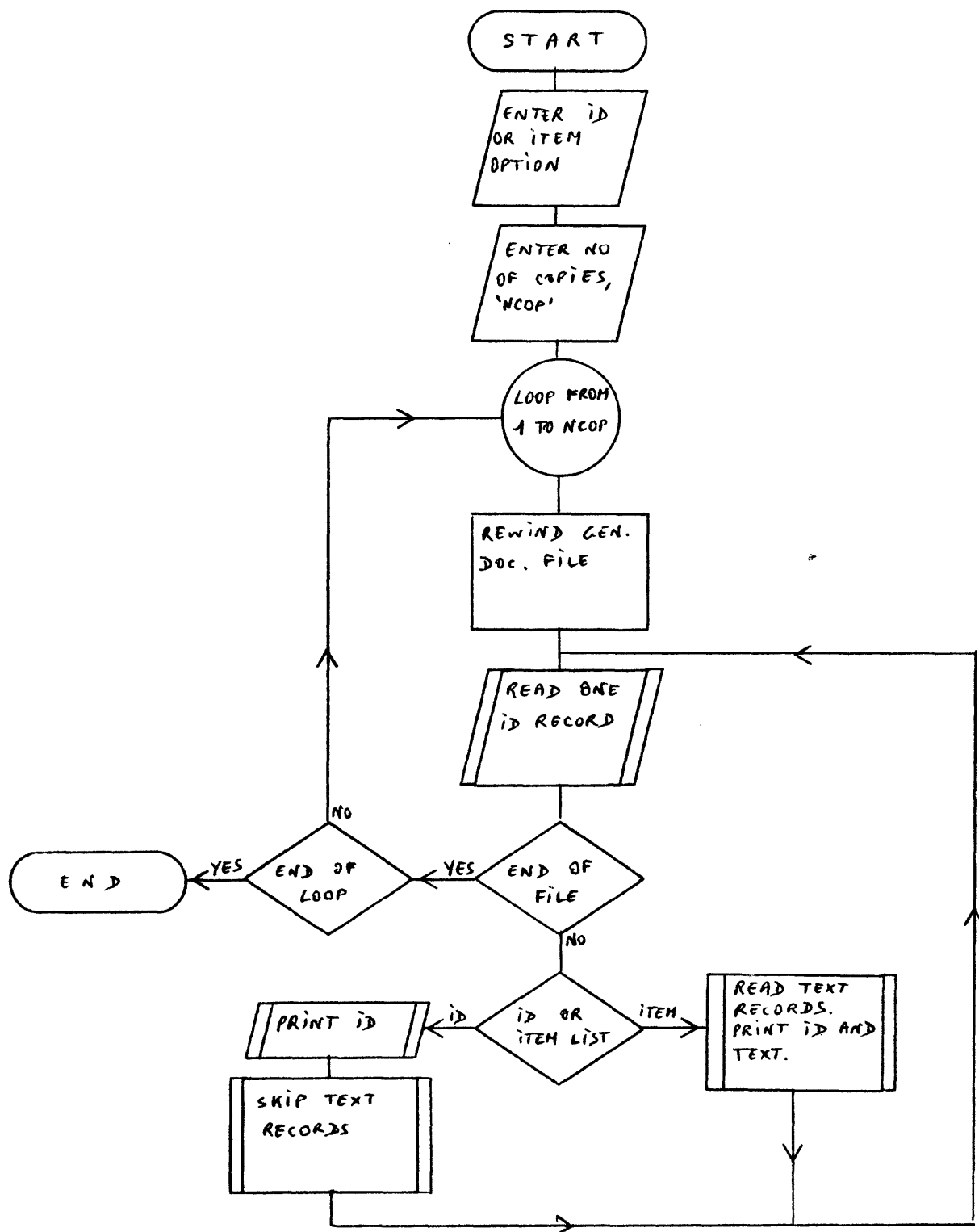


Figure 2.--SEQUEN subprogram flow chart.

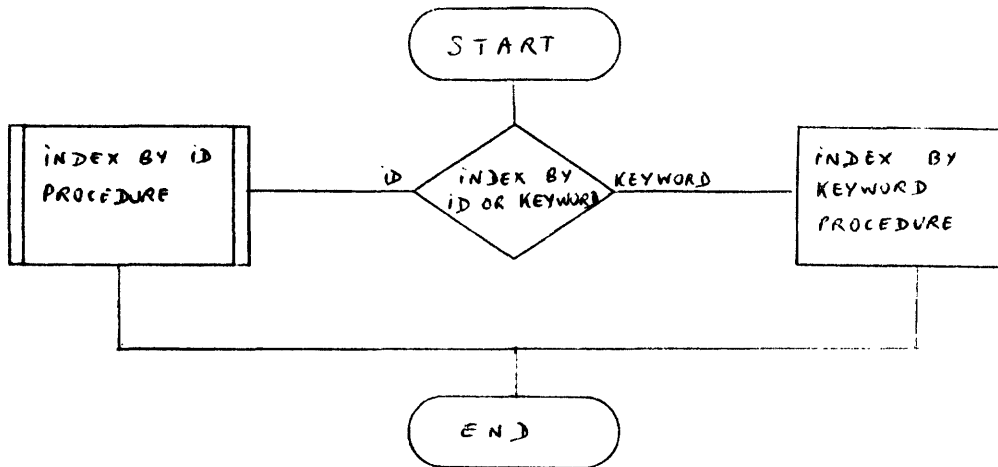


Figure 3.--INDEX subprogram flow chart

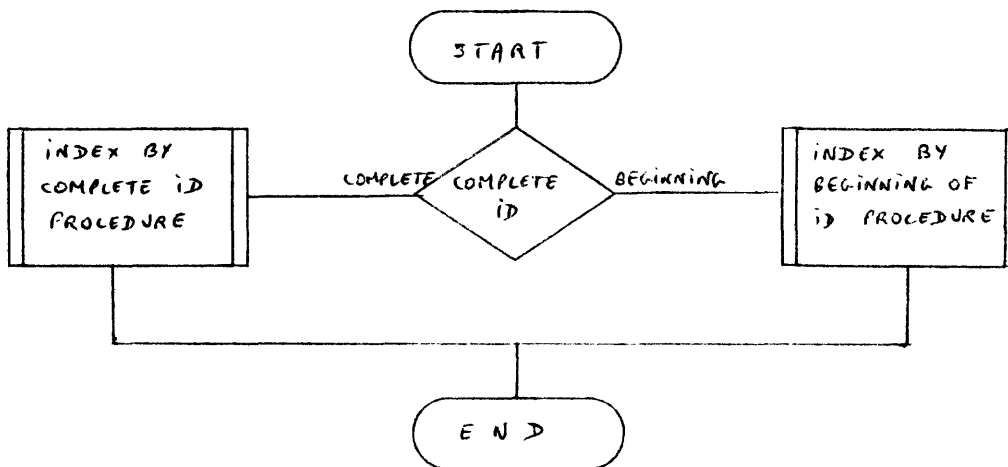


Figure 4.--INDEXI subprogram flow chart

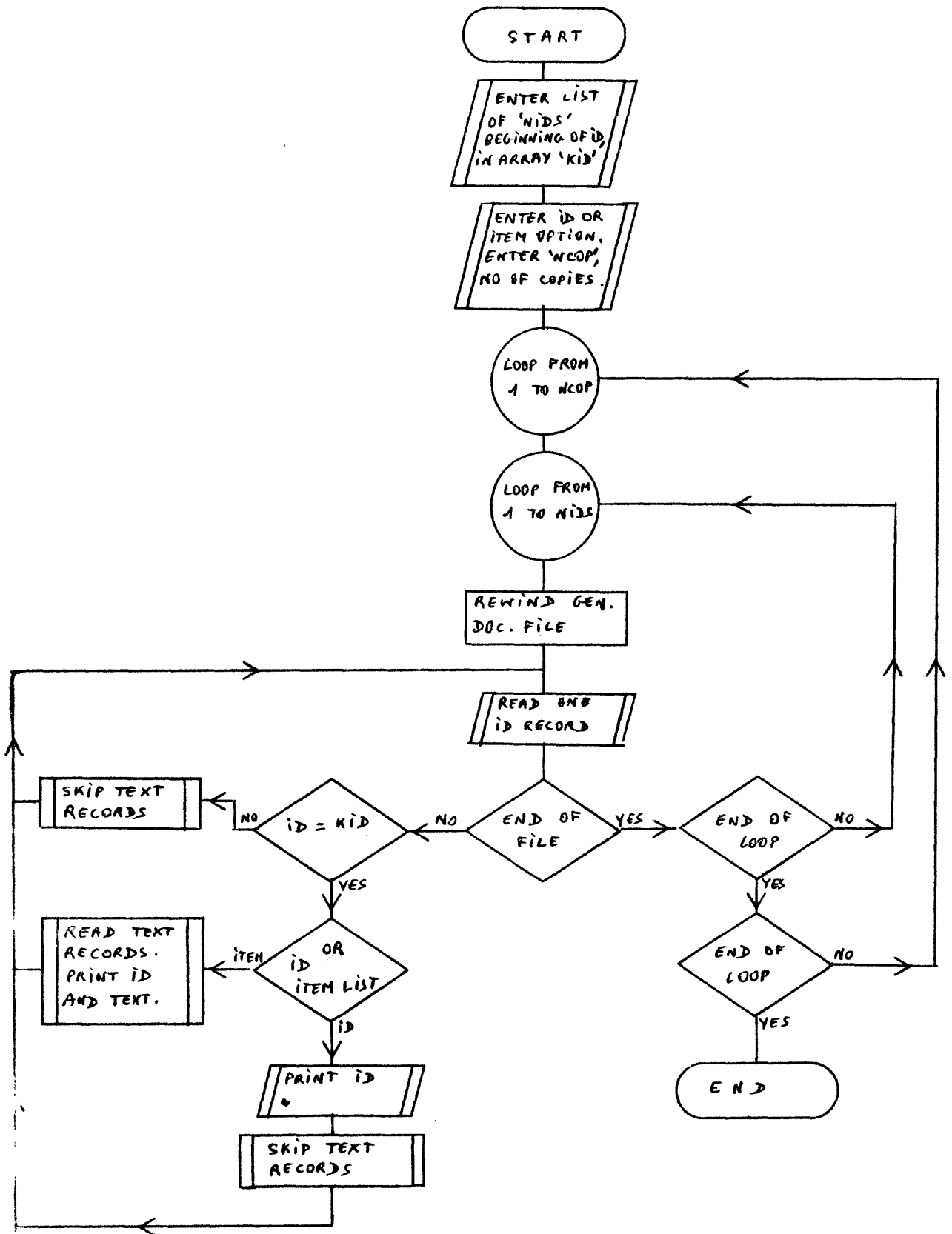


Figure 5.--INBEGI subprogram flow chart.

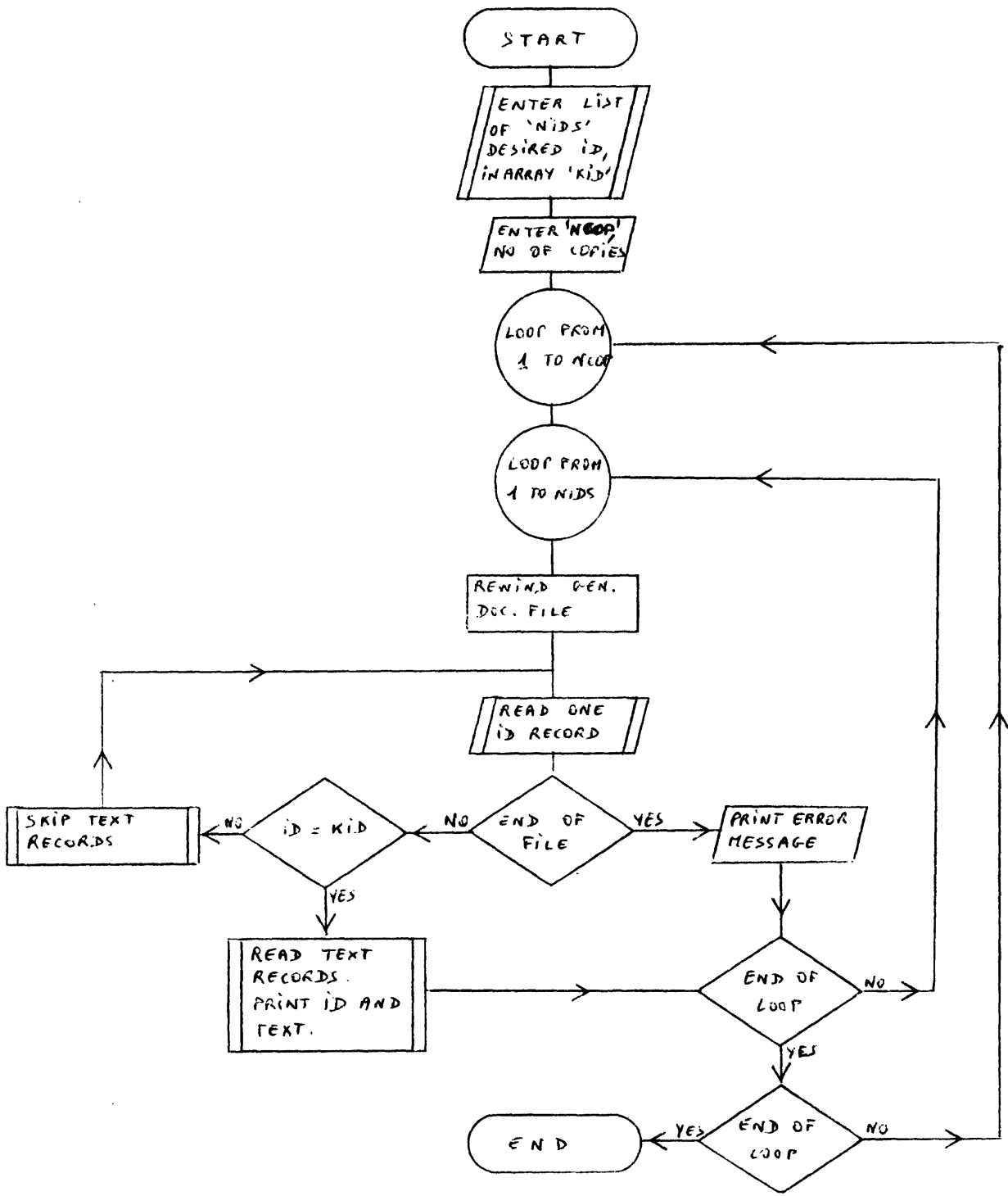


Figure 6.--INCOMI subprogram flow chart.

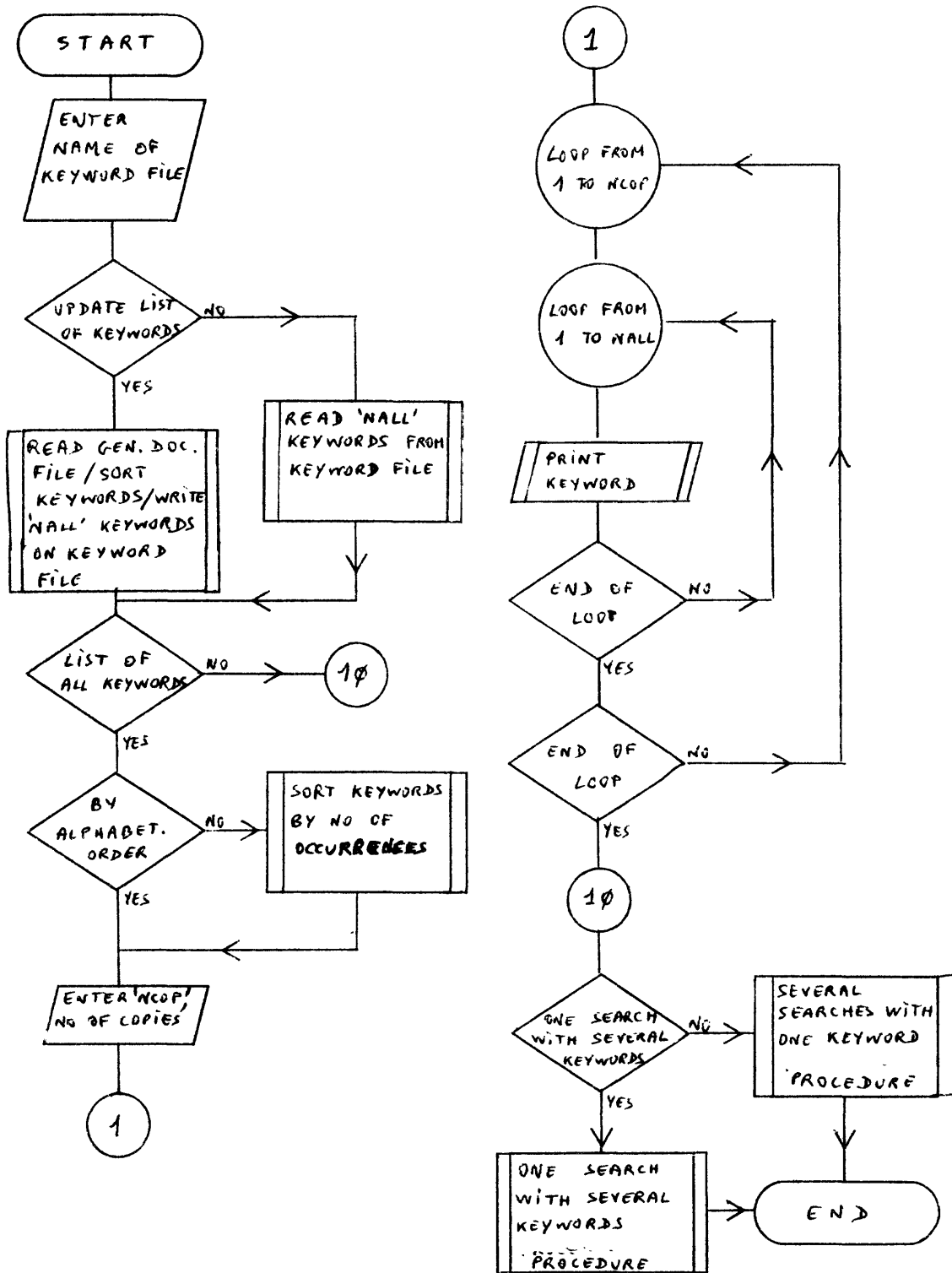


Figure 7.--INDEXK subprogram flow chart.

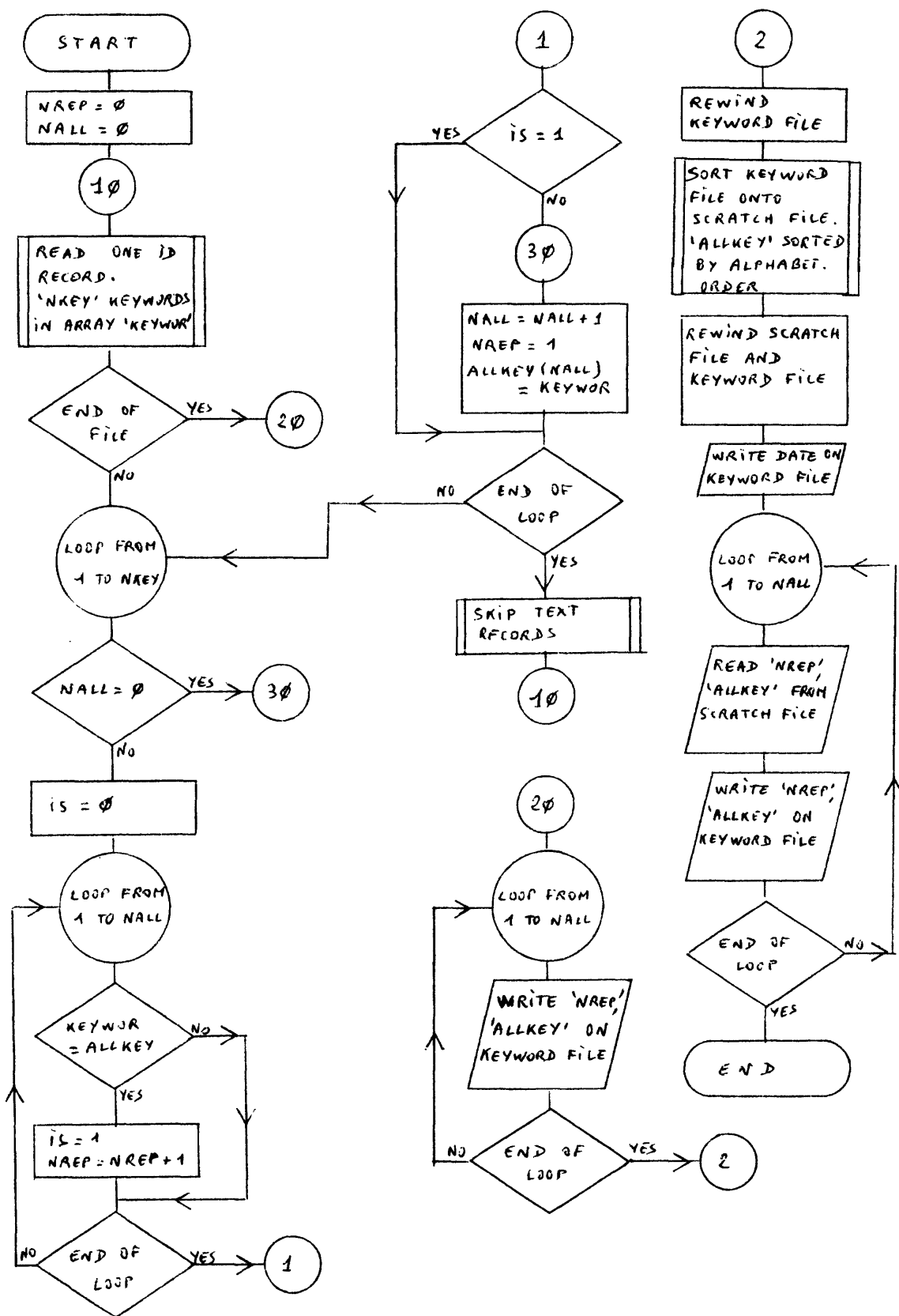
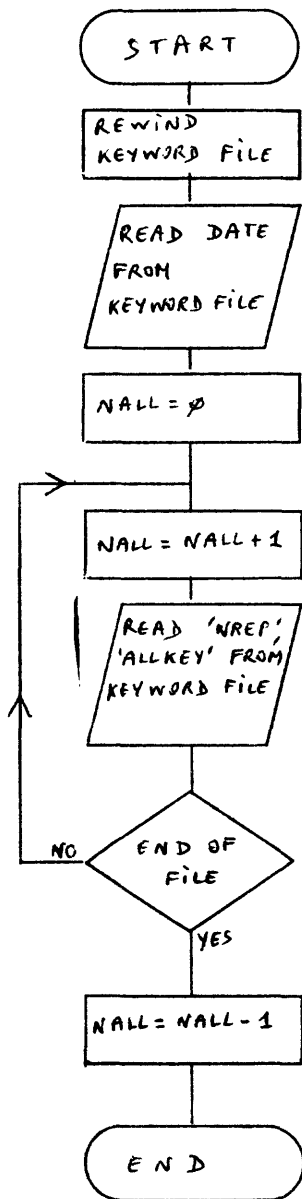
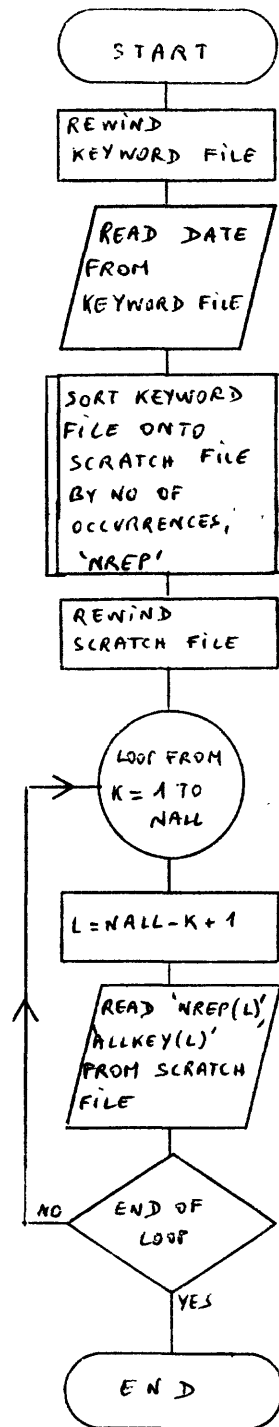


Figure 8.--ULKEY subprogram flow chart: ULKEY entry.



RLKEY Entry



OCKEY Entry

Figure 9.--ULKEY subprogram flow chart: RLKEY and OCKEY entries.

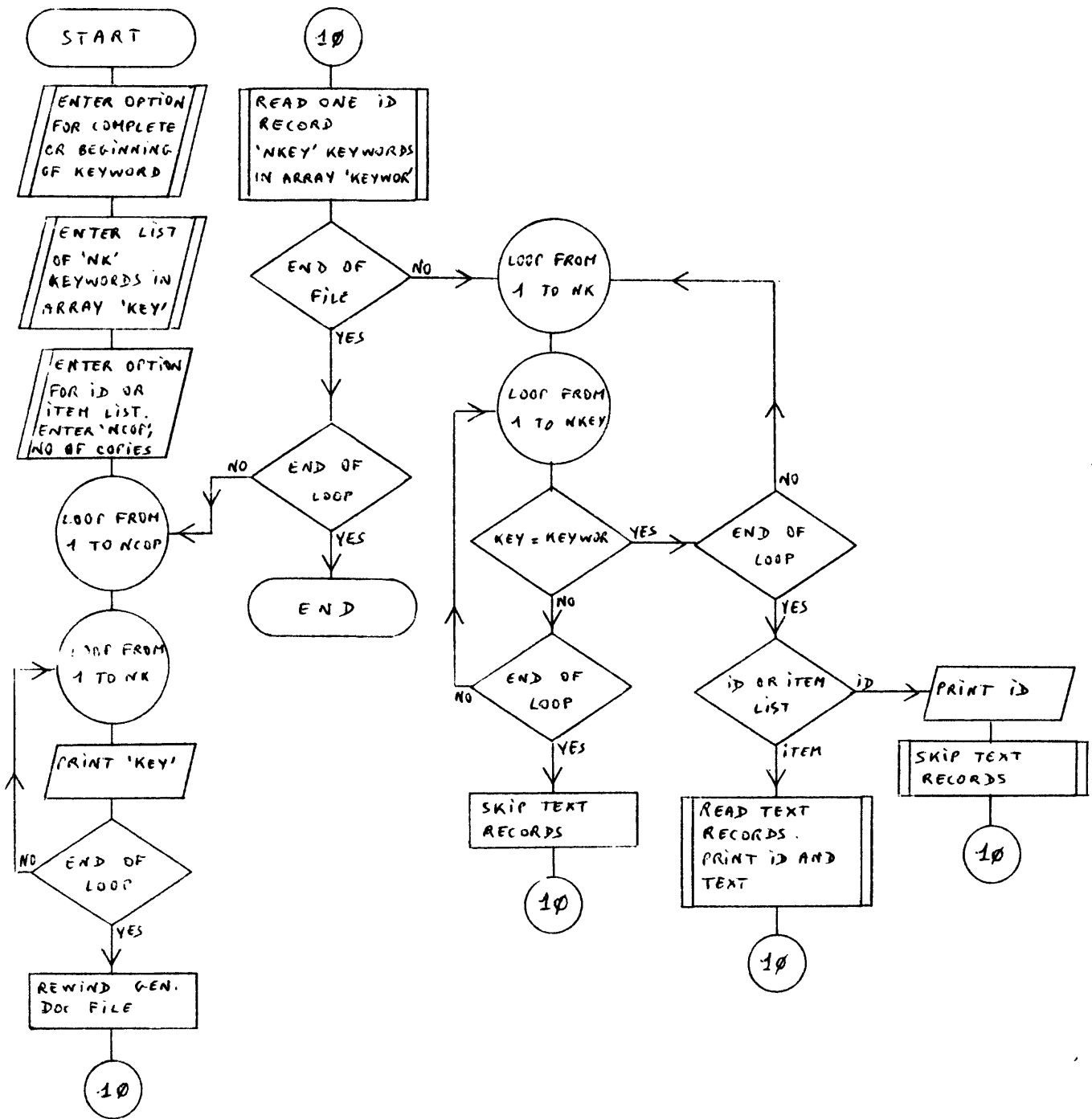


Figure 10.--INDSEV subprogram flow chart.

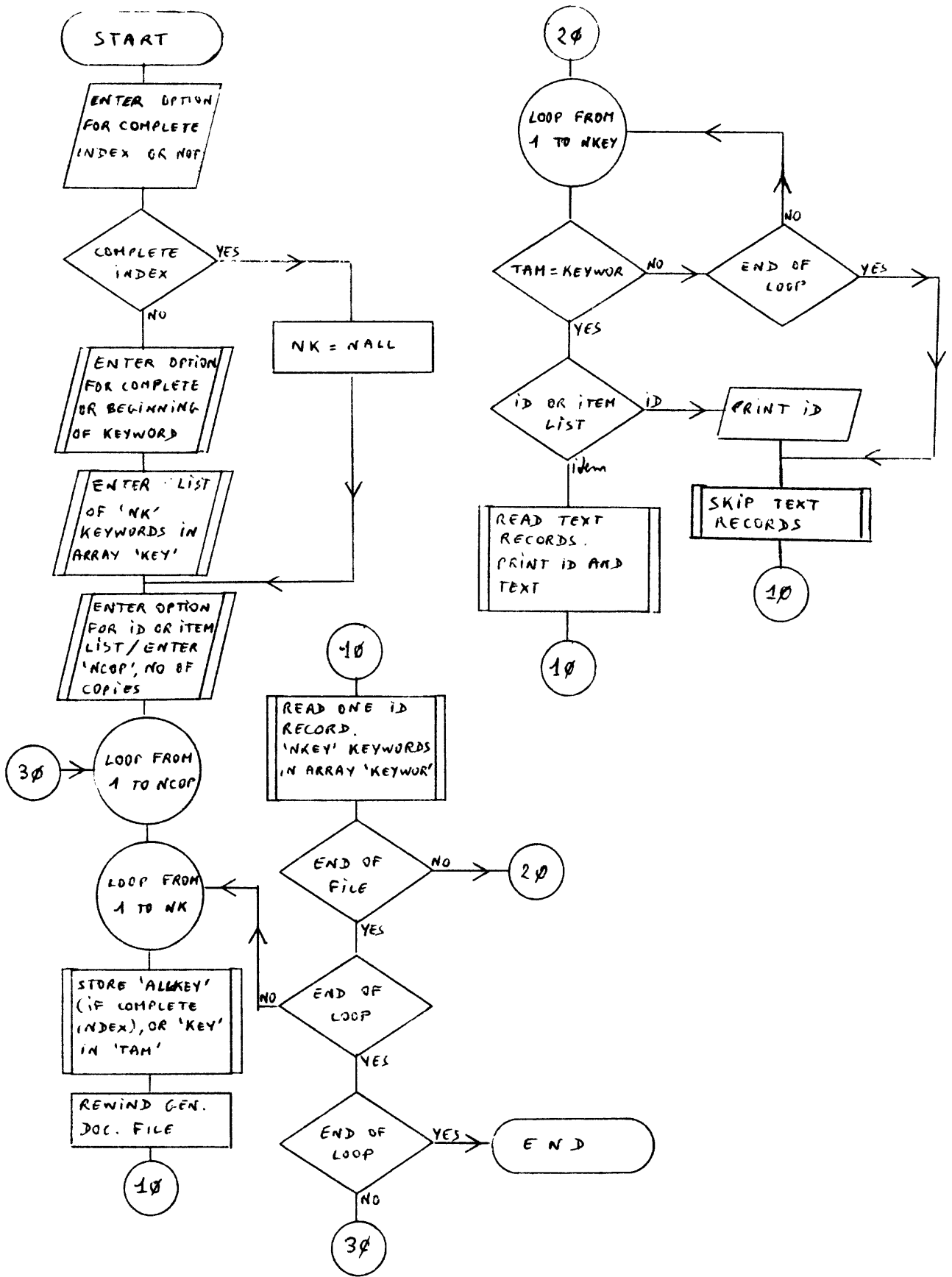


Figure 11.--INDONE subprogram flow chart.

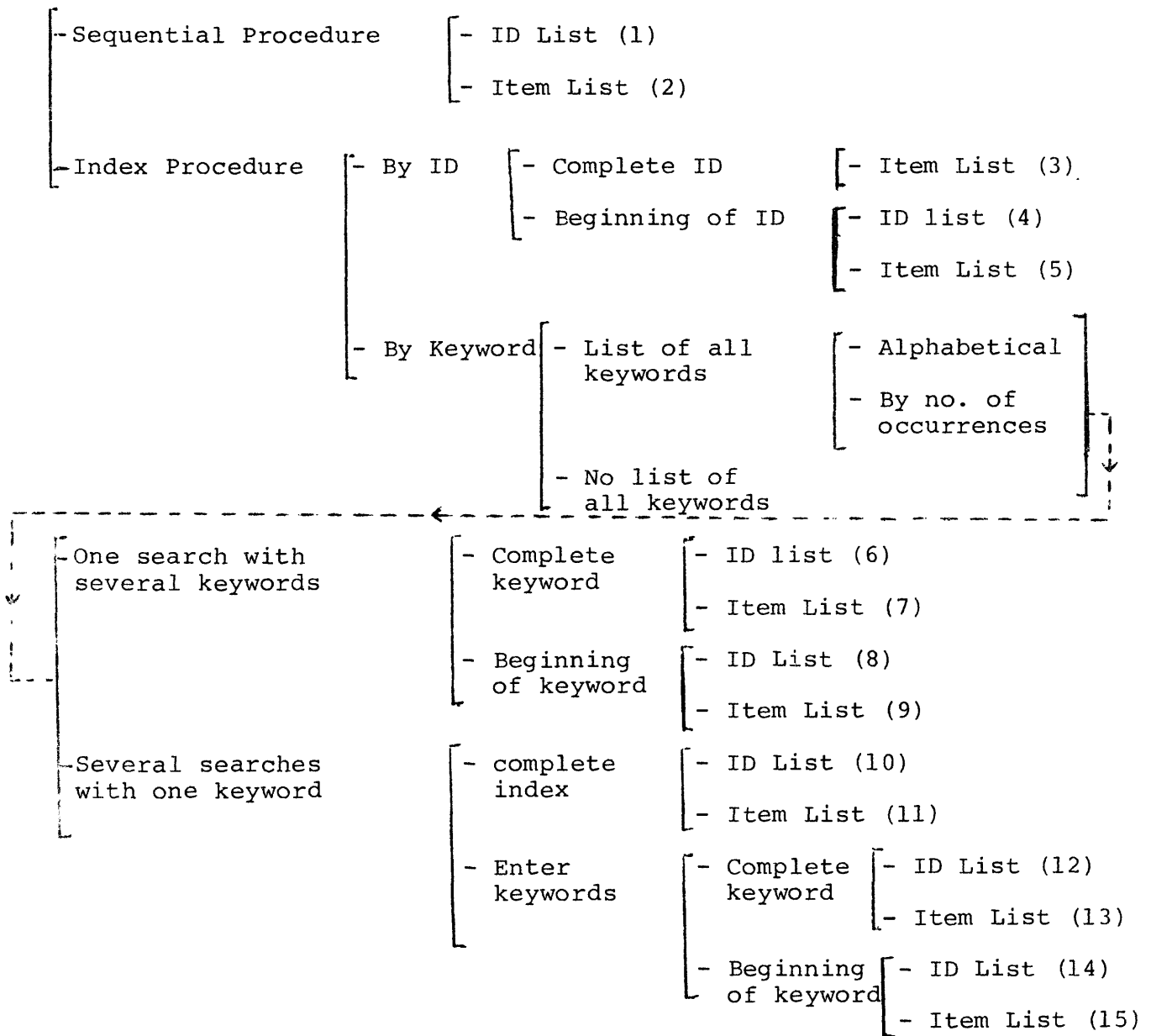


Figure 12. The 15 options of GENDOC program

In the index-by-ID procedure, a list of a few selected ID's is entered from the keyboard. The list is made up of full ID's or of beginnings (a few first characters) of ID's, but the two kinds must not be mixed up in the same list. In the first case, only the item list is printed, while in the other case either ID or item list may be printed.

For each full (or beginning of) ID of the list, the general documentation file is read from the beginning until the full (or beginning of) ID is reached. Then the ID only (ID list asked and beginning of ID entered), or the ID and text (item list asked and beginning of ID entered, or complete ID entered) are printed.

The index-by-keyword procedure begins with the building, or reading of the keyword file. The list of all keywords may be printed, either alphabetically, or by decreasing number of occurrences. Then this procedure leads to two main paths:

1) ID or item list of the items holding all keywords of a specified list.

The list of the selected keywords is entered from the keyboard; it is made up of full keywords or of beginnings of keywords (a first few characters), but the two kinds must not be mixed in the same list. This list is limited to no more than 10 keywords, as each ID record contains a maximum of 10 keywords. As soon as one keyword (or beginning of keyword) is entered, it is compared to the list of all keywords (read from the keyword file). The program will not take a keyword not present in the keyword file.

Then the general documentation file is read entirely. Each time an ID record is encountered, its keywords are compared with the list of specified keywords. If all the specified keywords are present in the ID record, the ID only (ID list) or the ID and text records of this item (item list) are printed. When the end of file is encountered the search is finished.

2) ID or item list of items holding one keyword of a specified list.

The list of selected keywords is entered from the keyboard; it is made up of full keywords or of beginnings of keywords (a first few characters), but the two kinds must not be mixed up in the same list. This list is limited to 50 now, but the limit may be increased. As soon as one keyword is entered, it is compared to the list of all keywords (read from the keyword file). The program will not take a keyword if it is not present in the keyword file.

Then, for each selected keyword, the general documentation file is read entirely. Each time an ID record is encountered, each of its keywords is compared to the selected keywords. If the selected keyword is present in the ID record, the ID only (ID list), or the ID and text records of this item (item list) are printed. When the end of the file is encountered, the search continues for the next selected keyword of the list.

Printouts

The four possibilities for the printout of the item lists are:

1) each item is printed beginning at the top of a page, and keywords are printed ahead of the text.

2) each item is printed beginning at the top of a page, but keywords are not printed.

3) each item is printed following the previous item, with one blank line between them as a separator, and the keywords are printed after the text.

4) same as 3), but the keywords are not printed.

The first two options are to be used when the texts are very long, while the last two will be used when the texts are only a few lines.

Program execution and length

Control and execution of the program is accomplished interactively through the terminal display. Input is made via the system disk (general documentation file, keyword file), output is via the line printer (lists of ID or items) and the system disk (keyword file). All printout is set up for a maximum printer width of 80-characters.

The FORTRAN source program requires 47 blocks of disk space, the object module 65 blocks, and the task image 97 blocks.

The execution time is given in the examples.

PROGRAM OPERATION

Enter "RUN GENDOC (§)" ^{1/} to start execution. Operation of the program is largely self-explanatory. Enter information asked in questions appearing on the terminal display. Questions requiring a "YES" or "NO" answer are answered by "Y" or "N". Questions requiring a numerical answer are asked again if a non-numerical character is entered.

^{1/}The symbol (§) means ALT mode, or ESC key.

EXAMPLE

The resulting printouts of the 15 options of the program using the same general documentation file follow.

First, the contents of the general documentation file is shown on page 25, as it is output from program GENADD (PDP001). The dump of the keyword file, which is created by job no. 6, is shown just after.

The 15 jobs, with indication of execution time are:

- job no. 1: sequential procedure, ID list (2 secs)
- job no. 2: sequential procedure, item list (2 secs)
- job no. 3: index procedure, index by ID, complete ID, item list (6 secs)
- job no. 4: index procedure, index by ID, beginning of ID, ID list (11 secs)
- job no. 5: index procedure, index by ID, beginning of ID, item list (11 secs)
- job no. 6: index procedure, index by keyword, one search with several keywords, complete keyword, ID list (3 secs). This list is preceded by the list of all keywords classified alphabetically (4 secs to create the file, 2 secs to print the list)
- job no. 7: index procedure, index by keyword, one search with several keywords, complete keyword, item list (3 secs). The list is preceded by the list of all keywords classified by decreasing number of occurrences (2 secs to sort the keywords)
- job no. 8: index procedure, index by keyword, one search with several keywords, beginning of keywords, ID list (6 secs)
- job no. 9: index procedure, index by keyword, one search with several keywords, beginning of keywords, item list (6 secs)
- job no. 10: index procedure, index by keyword, several searches with one keyword, complete index, ID list (22 secs)

- job no. 11: index procedure, index by keyword, several searches with one keyword, complete index, item list (24 secs)
- job no. 12: index procedure, index by keyword, several searches with one keyword, enter complete keywords, ID list (11 secs)
- job no. 13: index procedure, index by keyword, several searches with one keyword, enter complete keywords, item list (12 secs)
- job no. 14: index procedure, index by keyword, several searches with one keyword, enter beginning of keywords, ID list (15 secs)
- job no. 15: index procedure, index by keyword, several searches with one keyword, enter beginning of keywords, item list (15 secs)

CONTENTS OF GENERAL DOCUMENTATION FILE

GPA\BOX#1/2/3/4/5\01	2	4	MISC	AIR MAG	AIR RAD	LOC:ALL S.A.
1			MISC: STRIP FILM NEG, SINGLE FR: AL AYS, AL LISAN, AL AQIQ, ETC., (10			
2			AREAS SCATTERED ACCROSS SHIELD); USGS, HUNTING; 1962			
GPA\BOX#06\01	2	6	GEOLOGY	ORE DEPOSIT	ALLUVIAL PR.	LOC:25/37D LOC:25/38C
1			LOC:I-204			
2			N. AL AYS - PRELIM RPT ON MINERAL RESOURCES & GEOL, HENRY & LEFEYRE;			
GPA\BOX#06\02	2	8	GEOLOGY	GEOCHEMISTRY	ORE DEPOSIT	ALLUVIAL PR. GROUND RAD
1			LOC:25/40A LOC:25/40B LOC:I-205			
2			HILAYFAH/MUSAYNAAH - PRELIM RPT ON MINERAL RESOURCES & GEOL, DELFOUR;			
GPA\BOX#06\03	2	5	AIR MAG	AIR RAD	LOC:24/44C	LOC:24/44D LOC:I-206
1			AIR MAG & AIR RAD SHEET 101 - INTERP, LAMBOLEZ; 1:100,000; 1968, 68			
2			JED 46, A1-REG-4-3, AMSC-101			
GPA\BOX#06\04	2	5	AIR MAG	AIR RAD	LOC:23/41A	LOC:23/41B LOC:I-210
1			AIR MAG & AIR RAD SHEET 112 - INTERP, LAMBOLEZ; 1:100,000; 1969, 69			
2			JED 22, AMSC-112			
GPA\BOX#06\05	2	5	AIR MAG	AIR RAD	LOC:23/44A	LOC:23/44B LOC:I-211
1			AIR MAG & AIR RAD SHEET 115 - INTERP, MAILLARD; 1:100,000; 1968, 68			
2			JED 54, A1-REG-4-2, AMSC-115			
GPA\BOX#07\01	2	5	GEOLOGY	GRAVITY	LOC:28/34C	LOC:28/34D LOC:I-200
1			AL LISAN - GEOL, GRAV INVEST, AGOCS, KAHR; GEOL 1:100,000; GRAV			
2			1:10,000; 1962, 200-1-LIS-1			
GPA\BOX#07\02	2	5	GRAVITY	GROUND MAG	ORE DEPOSIT	LOC:25/38C LOC:I-204
1			AL AYS - CHROMITE OCCURRENCES, GEOPHYS INVEST, AKHRAS; GRAV, GROUND			
2			MAG 1:1,000; 1966, 204-1-AYS-1 (3 COPIES)			
GPA\BOX#08\03	2	4	GROUND MAG	ORE DEPOSIT	LOC:22/39B	LOC:I-210
1			METHGAL - IRON DEPOSIT, TECH LTR #34, DAVIS, ALLEN; GROUND MAG; 1965,			
2			210-3-MTH-1			
GPA\BOX#08\04	1	3	GRAVITY	LOC:22/39C	LOC:I-210	
1			RABIGH - GRAVITY WORK, ZIDAN; 1:1,000; 1965, 210-1-RAB-1			

6-JUN-78

4AIR MAG
4AIR RAD
2ALLUVIAL PR.
1GEOCHEMISTRY
3GEOLOGY
3GRAVITY
2GROUND MAG
1GROUND RAD
1LOC:22/39B
1LOC:22/39C
1LOC:23/41A
1LOC:23/41B
1LOC:23/44A
1LOC:23/44B
1LOC:24/44C
1LOC:24/44D
1LOC:25/37D
2LOC:25/38C
1LOC:25/40A
1LOC:25/40B
1LOC:28/34C
1LOC:28/34D
1LOC:ALL S.A.
1LOC:I-207
2LOC:I-204
1LOC:I-205
1LOC:I-206
3LOC:I-210
1LOC:I-211
1MISC
4ORE DEPOSIT

26-JUN-78

JOB NO. 1

SEQUENTIAL ID LIST

- 1- GPA;BOX#1/2/3/4/5;01
- 2- GPA;BOX#06;01
- 3- GPA;BOX#06;02
- 4- GPA;BOX#06;03
- 5- GPA;BOX#06;04
- 6- GPA;BOX#06;05
- 7- GPA;BOX#07;01
- 8- GPA;BOX#07;02
- 9- GPA;BOX#08;03
- 10- GPA;BOX#08;04

FILE GPATES.GDF HOLDS 10 ITEMS

JOB NO. 2
*****SEQUENTIAL ITEM LIST

26-JUN-78

- 1) GPA:BOX#1/2/3/4/5:01
MISC: STRIP FILM NEG, SINGLE FR: AL AYS, AL LISAN, AL AQIQ, ETC., (10
AREAS SCATTERED ACCROSS SHIELD); USGS, HUNTING; 1962
-MISC -AIR MAG -AIR RAD -LOC:ALL S.A.-
- 2) GPA:BOX#06:01
N. AL AYS - PRELIM RPT ON MINERAL RESOURCES & GEOL, HENRY & LEFEYRE;
204-2-AYS-3
-GEOLOGY -ORE DEPOSIT -ALLUVIAL PR. -LOC:25/37D -LOC:25/38C -
-LOC:I-204 -
- 3) GPA:BOX#06:02
HYLAYFAH/MUSAYNAAH - PRELIM RPT ON MINERAL RESOURCES & GEOL, DELFOUR;
205-2-MUS-HUL-2
-GEOLOGY -GEOCHEMISTRY-ORE DEPOSIT -ALLUVIAL PR. -GROUND RAD -
-LOC:25/40A -LOC:25/40B -LOC:I-205 -
- 4) GPA:BOX#06:03
AIR MAG & AIR RAD SHEET 101 - INTERP, LAMBOLEZ; 1:100,000; 1968, 68
JED 46, A1-REG-2-3, AMSC-101
-AIR MAG -AIR RAD -LOC:24/44C -LOC:24/44D -LOC:I-206 -
- 5) GPA:BOX#06:04
AIR MAG & AIR RAD SHEET 112 - INTERP, LAMBOLEZ; 1:100,000; 1969, 69
JED 22, AMSC-112
-AIR MAG -AIR RAD -LOC:23/41A -LOC:23/41B -LOC:I-210 -
- 6) GPA:BOX#06:05
AIR MAG & AIR RAD SHEET 115 - INTERP, MAILLARD; 1:100,000; 1968, 68
JED 54, A1-REG-2-2, AMSC-115
-AIR MAG -AIR RAD -LOC:23/44A -LOC:23/44B -LOC:I-211 -
- 7) GPA:BOX#07:01
AL LISAN - GEOL, GRAV INVEST, AGOCS, KAHR; GEOL 1:100,000; GRAV
1:10,000; 1962, 200-1-LIS-1
-GEOLOGY -GRAVITY -LOC:28/34C -LOC:28/34D -LOC:I-200 -
- 8) GPA:BOX#07:02
AL AYS - CHROMITE OCCURRENCES, GEOPHYS INVEST, AKHRAS; GRAV, GROUND
MAG 1:1,000; 1966, 204-1-AYS-1 (3 COPIES)
-GRAVITY -GROUND MAG -ORE DEPOSIT -LOC:25/38C -LOC:I-204 -
- 9) GPA:BOX#08:03
METHGAL - IRON DEPOSIT, TECH LTR #34, DAVIS, ALLEN; GROUND MAG; 1965,
210-3-MTH-1
-GROUND MAG -ORE DEPOSIT -LOC:22/39B -LOC:I-210 -
- 10) GPA:BOX#08:04
RABIGH - GRAVITY WORK, ZIDAN; 1:1,000 ; 1965, 210-1-RAB-1
-GRAVITY -LOC:22/39C -LOC:I-210 -

FILE GPATES.GDF HOLDS 10 ITEMS

26-JUN-78

JOB NO. 4

INDEXED ID LIST

INDEX BY ID

ID BEGINNING WITH : GPA;BOX#06

- 1- GPA;BOX#06;01
- 2- GPA;BOX#06;02
- 3- GPA;BOX#06;03
- 4- GPA;BOX#06;04
- 5- GPA;BOX#06;05

5 ID BEGIN WITH : GPA;BOX#06

JOB NO. 5

INDEXED ITEM LIST

INDEX BY ID

26-JUN-78

ID BEGINNING WITH : GPA;BOX#06

- 1) GPA;BOX#06;01
N. AL AYS - PRELIM RPT ON MINERAL RESOURCES & GEOL, HENRY & LEFEYRE;
204-2-AYS-3
-GEOLOGY -ORE DEPOSIT -ALLUVIAL PR.-LOC:25/37D -LOC:25/38C -
-LOC:I-204 -
- 2) GPA;BOX#06;02
HYLAYFAH/MUSAYNAAH - PRELIM RPT ON MINERAL RESOURCES & GEOL, DELFOUR;
205-2-MUS-HUL-2
-GEOLOGY -GEOCHEMISTRY-ORE DEPOSIT -ALLUVIAL PR.-GROUND RAD -
-LOC:25/40A -LOC:25/40B -LOC:I-205 -
- 3) GPA;BOX#06;03
AIR MAG & AIR RAD SHEET 101 - INTERP, LAMBOLEZ; 1:100,000; 1968, 68
JED 46, A1-REG-2-3, AMSC-101
-AIR MAG -AIR RAD -LOC:24/44C -LOC:24/44D -LOC:I-206 -
- 4) GPA;BOX#06;04
AIR MAG & AIR RAD SHEET 112 - INTERP, LAMBOLEZ; 1:100,000; 1969, 69
JED 22, AMSC-112
-AIR MAG -AIR RAD -LOC:23/41A -LOC:23/41B -LOC:I-210 -
- 5) GPA;BOX#06;05
AIR MAG & AIR RAD SHEET 115 - INTERP, MAILLARD; 1:100,000; 1968, 68
JED 54, A1-REG-2-2, AMSC-115
-AIR MAG -AIR RAD -LOC:23/44A -LOC:23/44B -LOC:I-211 -

5 ID BEGIN WITH : GPA;BOX#06

26-JUN-78

JOB NO. 6
*****LIST OF ALL KEYWORDS

THERE ARE 31 DIFFERENT KEYWORDS.
LIST MADE ON 26-JUN-78 HAS BEEN READ/STORED ON FILE GPATES.KEY

KEYWORD	NB OF OCCURRENCES
1- AIR MAG	4
2- AIR RAD	4
3- ALLUVIAL PR.	2
4- GEOCHEMISTRY	1
5- GEOLOGY	3
6- GRAVITY	3
7- GROUND MAG	2
8- GROUND RAD	1
9- LOC:22/39B	1
10- LOC:22/39C	1
11- LOC:23/41A	1
12- LOC:23/41B	1
13- LOC:23/44A	1
14- LOC:23/44B	1
15- LOC:24/44C	1
16- LOC:24/44D	1
17- LOC:25/37D	1
18- LOC:25/38C	2
19- LOC:25/40A	1
20- LOC:25/40B	1
21- LOC:28/34C	1
22- LOC:28/34D	1
23- LOC:ALL S.A.	1
24- LOC:I-200	1
25- LOC:I-204	2
26- LOC:I-205	1
27- LOC:I-206	1
28- LOC:I-210	3
29- LOC:I-211	1
30- MISC	1
31- ORE DEPOSIT	4

26-JUN-78

JOB NO. 6

INDEXED ID LIST

INDEX BY KEYWORD

LIST OF SELECTED KEYWORDS :

- 1- GEOLOGY
- 2- LOC:I-204

ID LIST :

- 1- GPA/BOX#06/01

1 ITEMS HOLD THE 2 SELECTED KEYWORDS

26-JUN-78

JOB NO. 7
*****LIST OF ALL KEYWORDS

THERE ARE 31 DIFFERENT KEYWORDS.
LIST MADE ON 26-JUN-78 HAS BEEN READ/STORED ON FILE GPATES.KEY

KEYWORD	NB OF OCCURRENCES
1- AIR MAG	4
2- AIR RAD	4
3- ORE DEPOSIT	4
4- GEOLOGY	3
5- GRAVITY	3
6- LOC:I-210	3
7- ALLUVIAL PR.	2
8- GROUND MAG	2
9- LOC:25/38C	2
10- LOC:I-204	2
11- GEOCHEMISTRY	1
12- GROUND RAD	1
13- LOC:22/39B	1
14- LOC:22/39C	1
15- LOC:23/41A	1
16- LOC:23/41B	1
17- LOC:23/44A	1
18- LOC:23/44B	1
19- LOC:24/44C	1
20- LOC:24/44D	1
21- LOC:25/37D	1
22- LOC:25/40A	1
23- LOC:25/40B	1
24- LOC:28/34C	1
25- LOC:28/34D	1
26- LOC:ALL S.A.	1
27- LOC:I-200	1
28- LOC:I-205	1
29- LOC:I-206	1
30- LOC:I-211	1
31- MISC	1

26-JUN-78

JOB NO. 7

INDEXED ITEM LIST

INDEX BY KEYWORD

LIST OF SELECTED KEYWORDS :

- 1- GEOLOGY
- 2- LOC:I-204

1) GPA\BOX#06\01
 N. AL AYS - PRELIM RPT ON MINERAL RESOURCES & GEOL, HENRY & LEFEYRE
 204-2-AYS-3
 -GEOLOGY -ORE DEPOSIT -ALLUVIAL PR. -LOC:25/37D -LOC:25/38C -
 -LOC:I-204 -

1 ITEMS HOLD THE 2 SELECTED KEYWORDS

JOB NO. 8

INDEXED ID LIST

INDEX BY KEYWORD

LIST OF SELECTED BEGINNINGS OF KEYWORDS :

- 1- GEU
- 2- LOC:I-20

ID LIST :

- 1- GPA;BOX#06;01
- 2- GPA;BOX#06;02
- 3- GPA;BOX#07;01

3 ITEMS HOLD THE 2 SELECTED BEGINNINGS OF KEYWORDS

JOB NO. 9

INDEXED ITEM LIST

INDEX BY KEYWORD

26-JUN-78

LIST OF SELECTED BEGINNINGS OF KEYWORDS :

- 1- GEO
- 2- LOC:I-20

- 1) GPA;BOX#06;01
N. AL AYS - PRELIM RPT ON MINERAL RESOURCES & GEOL, HENRY & LEFEYRE;
204-2-AYS-3
-GEOLOGY -ORE DEPOSIT -ALLUVIAL PR. -LOC:25/37D -LOC:25/38C
-LOC:I-204 -
- 2) GPA;BOX#06;02
HYLAYFAH/MUSAYNAAH - PRELIM RPT ON MINERAL RESOURCES & GEOL, DELFOUR;
205-2-MUS-HUL-2
-GEOLOGY -GEOCHEMISTRY-ORE DEPOSIT -ALLUVIAL PR. -GROUND RAD
-LOC:25/40A -LOC:25/40B -LOC:I-205
- 3) GPA;BOX#07;01
AL LISAN - GEOL, GRAV INVEST, AGOCS, KAHR; GEOL 1:100,000; GRAV
1:10,000; 1962, 200-1-LIS-1
-GEOLOGY -GRAVITY -LOC:28/34C -LOC:28/34D -LOC:I-200

3 ITEMS HOLD THE 2 SELECTED BEGINNINGS OF KEYWORDS

JOB NO. 10 INDEXED ID LIST

COMPLETE INDEX BY KEYWORD

KEYWORD : AIR MAG

- 1- GPA;BOX#1/2/3/4/5;01
- 2- GPA;BOX#06;03
- 3- GPA;BOX#06;04
- 4- GPA;BOX#06;05

4 ITEMS HOLD THE KEYWORD : AIR MAG

KEYWORD : AIR RAD

- 1- GPA;BOX#1/2/3/4/5;01
- 2- GPA;BOX#06;03
- 3- GPA;BOX#06;04
- 4- GPA;BOX#06;05

4 ITEMS HOLD THE KEYWORD : AIR RAD

KEYWORD : ALLUVIAL PR.

- 1- GPA;BOX#06;01
- 2- GPA;BOX#06;02

2 ITEMS HOLD THE KEYWORD : ALLUVIAL PR.

KEYWORD : GEOCHEMISTRY

- 1- GPA;BOX#06;02

1 ITEMS HOLD THE KEYWORD : GEOCHEMISTRY

KEYWORD : GEOLOGY

- 1- GPA;BOX#06;01
- 2- GPA;BOX#06;02
- 3- GPA;BOX#07;01

3 ITEMS HOLD THE KEYWORD : GEOLOGY

KEYWORD : GRAVITY

- 1- GPA;BOX#07;01
- 2- GPA;BOX#07;02
- 3- GPA;BOX#08;04

3 ITEMS HOLD THE KEYWORD : GRAVITY

KEYWORD : GROUND MAG

- 1- GPA;BOX#07;02
- 2- GPA;BOX#08;03

2 ITEMS HOLD THE KEYWORD : GROUND MAG

KEYWORD : GROUND RAD

- 1- GPA;BOX#06;02

1 ITEMS HOLD THE KEYWORD : GROUND RAD

KEYWORD : LOC:22/39B

1- GPA;BOX#08;03

1 ITEMS HOLD THE KEYWORD : LOC:22/39B

KEYWORD : LOC:22/39C

1- GPA;BOX#08;04

1 ITEMS HOLD THE KEYWORD : LOC:22/39C

KEYWORD : LOC:23/41A

1- GPA;BOX#06;04

1 ITEMS HOLD THE KEYWORD : LOC:23/41A

KEYWORD : LOC:23/41B

1- GPA;BOX#06;04

1 ITEMS HOLD THE KEYWORD : LOC:23/41B

KEYWORD : LOC:23/44A

1- GPA;BOX#06;05

1 ITEMS HOLD THE KEYWORD : LOC:23/44A

KEYWORD : LOC:23/44B

1- GPA;BOX#06;05

1 ITEMS HOLD THE KEYWORD : LOC:23/44B

KEYWORD : LOC:24/44C

1- GPA;BOX#06;03

1 ITEMS HOLD THE KEYWORD : LOC:24/44C

KEYWORD : LOC:24/44D

1- GPA;BOX#06;03

1 ITEMS HOLD THE KEYWORD : LOC:24/44D

KEYWORD : LOC:25/37D

1- GPA;BOX#06;01

1 ITEMS HOLD THE KEYWORD : LOC:25/37D

KEYWORD : LOC:25/38C

- 1- GPA)BOX#06)01
- 2- GPA)BOX#07)02

2 ITEMS HOLD THE KEYWORD : LOC:25/38C

KEYWORD : LOC:25/40A

- 1- GPA)BOX#06)02

1 ITEMS HOLD THE KEYWORD : LOC:25/40A

KEYWORD : LOC:25/40B

- 1- GPA)BOX#06)02

1 ITEMS HOLD THE KEYWORD : LOC:25/40B

KEYWORD : LOC:28/34C

- 1- GPA)BOX#07)01

1 ITEMS HOLD THE KEYWORD : LOC:28/34C

KEYWORD : LOC:28/34D

1- GPA;BOX#07;01

1 ITEMS HOLD THE KEYWORD : LOC:28/34D

KEYWORD : LOC:ALL S.A.

1- GPA;BOX#1/2/3/4/5;01

1 ITEMS HOLD THE KEYWORD : LOC:ALL S.A.

KEYWORD : LOC:I-200

1- GPA;BOX#07;01

1 ITEMS HOLD THE KEYWORD : LOC:I-200

KEYWORD : LOC:I-204

1- GPA;BOX#06;01
2- GPA;BOX#07;02

2 ITEMS HOLD THE KEYWORD : LOC:I-204

KEYWORD : LOC:I-205

1- GPA;BOX#06;02

1 ITEMS HOLD THE KEYWORD : LOC:I-205

KEYWORD : LOC:I-206

1- GPA;BOX#06;03

1 ITEMS HOLD THE KEYWORD : LOC:I-206

KEYWORD : LOC:I-210

- 1- GPA;BOX#06;04
- 2- GPA;BOX#08;03
- 3- GPA;BOX#08;04

3 ITEMS HOLD THE KEYWORD : LOC:I-210

KEYWORD : LOC:I-211

1- GPA;BOX#06;05

1 ITEMS HOLD THE KEYWORD : LOC:I-211

KEYWORD : MISC

1- GPA;BOX#1/2/3/4/5;01

1 ITEMS HOLD THE KEYWORD : MISC

KEYWORD : ORE DEPOSIT

- 1- GPA;BOX#06;01
- 2- GPA;BOX#06;02
- 3- GPA;BOX#07;02
- 4- GPA;BOX#08;03

4 ITEMS HOLD THE KEYWORD : ORE DEPOSIT

26-JUN-78

JOB NO. 11

INDEXED ITEM LIST

.....

COMPLETE INDEX BY KEYWORD

KEYWORD : AIR MAG

- 1) GPA;BOX#1/2/3/4/5;01
MISC: STRIP FILM NEG, SINGLE FR; AL AYS, AL LISAN, AL AQIQ, ETC., (10
AREAS SCATTERED ACCROSS SHIELD); USGS, HUNTING; 1962
-MISC -AIR MAG -AIR RAD -LOC:ALL S.A.-
- 2) GPA;BOX#06;03
AIR MAG & AIR RAD SHEET 101 - INTERP, LAMBOLEZ; 1:100,0000; 1968, 68
JED 46, A1-REG-2-3, AMSC-101
-AIR MAG -AIR RAD -LOC:24/44C -LOC:24/44D -LOC:I-206 -
- 3) GPA;BOX#06;04
AIR MAG & AIR RAD SHEET 112 - INTERP, LAMBOLEZ; 1:100,0000; 1969, 69
JED 22, AMSC-112
-AIR MAG -AIR RAD -LOC:23/41A -LOC:23/41B -LOC:I-210 -
- 4) GPA;BOX#06;05
AIR MAG & AIR RAD SHEET 115 - INTERP, MAILLARD; 1:100,0000; 1968, 68
JED 54, A1-REG-2-2, AMSC-115
-AIR MAG -AIR RAD -LOC:23/44A -LOC:23/44B -LOC:I-211 -

4 ITEMS HOLD THE KEYWORD : AIR MAG

KEYWORD : AIR RAD

- 1) GPA;BOX#1/2/3/4/5;01
MISC: STRIP FILM NEG, SINGLE FR; AL AYS, AL LISAN, AL AQIQ, ETC., (10
AREAS SCATTERED ACCROSS SHIELD); USGS, HUNTING; 1962
-MISC -AIR MAG -AIR RAD -LOC:ALL S.A.-
- 2) GPA;BOX#06;03
AIR MAG & AIR RAD SHEET 101 - INTERP, LAMBOLEZ; 1:100,0000; 1968, 68
JED 46, A1-REG-2-3, AMSC-101
-AIR MAG -AIR RAD -LOC:24/44C -LOC:24/44D -LOC:I-206 -
- 3) GPA;BOX#06;04
AIR MAG & AIR RAD SHEET 112 - INTERP, LAMBOLEZ; 1:100,0000; 1969, 69
JED 22, AMSC-112
-AIR MAG -AIR RAD -LOC:23/41A -LOC:23/41B -LOC:I-210 -

4) GPA;BOX#06;05
AIR MAG & AIR RAD SHEET 115 - INTERP, MAILLARD; 1:100,000; 1968, 68
JED 54, A1-REG-2-2, AMSC-115
-AIR MAG -AIR RAD -LOC:23/44A -LOC:23/44B -LOC:I-211 -

4 ITEMS HOLD THE KEYWORD : AIR RAD

KEYWORD : ALLUVIAL PR.

1) GPA;BOX#06;01
N. AL AYS - PRELIM RPT ON MINERAL RESOURCES & GEOL, HENRY & LEFFLYRE;
204-2-AYS-3
-GEOLOGY -ORE DEPOSIT -ALLUVIAL PR.-LOC:25/37D -LOC:25/38C -
-LOC:I-204 -

2) GPA;BOX#06;02
HYLAYFAH/MUSAYNAAH - PRELIM RPT ON MINERAL RESOURCES & GEOL, DELFOUR;
205-2-MUS-HUL-2
-GEOLOGY -GEOCHEMISTRY-ORE DEPOSIT -ALLUVIAL PR.-GROUND RAD -
-LOC:25/40A -LOC:25/40B -LOC:I-205 -

2 ITEMS HOLD THE KEYWORD : ALLUVIAL PR.

KEYWORD : GEOCHEMISTRY

1) GPA;BOX#06;02
HYLAYFAH/MUSAYNAAH - PRELIM RPT ON MINERAL RESOURCES & GEOL, DELFOUR;
205-2-MUS-HUL-2
-GEOLOGY -GEOCHEMISTRY-ORE DEPOSIT -ALLUVIAL PR.-GROUND RAD -
-LOC:25/40A -LOC:25/40B -LOC:I-205 -

1 ITEMS HOLD THE KEYWORD : GEOCHEMISTRY

KEYWORD : GEOLOGY

- 1) GPA;BOX#06;01
N. AL AYS - PRELIM RPT ON MINERAL RESOURCES & GEOL, HENRY & LEFEYRE;
204-2-AYS-3
-GEOLOGY -ORE DEPOSIT -ALLUVIAL PR.-LOC:25/37D -LOC:25/38C -
-LOC:I-204 -
- 2) GPA;BOX#06;02
HYLAYFAH/MUSAYNAAH - PRELIM RPT ON MINERAL RESOURCES & GEOL, DELFOUR;
205-2-MUS-HUL-2
-GEOLOGY -GEOCHEMISTRY-ORE DEPOSIT -ALLUVIAL PR.-GROUND RAD -
-LOC:25/40A -LOC:25/40B -LOC:I-205 -
- 3) GPA;BOX#07;01
AL LISAN - GEOL, GRAV INVEST, AGOCS, KAHR; GEOL 1:100,000; GRAV
1:10,000; 1962, 200-1-LIS-1
-GEOLOGY -GRAVITY -LOC:28/34C -LOC:28/34D -LOC:I-200 -

3 ITEMS HOLD THE KEYWORD : GEOLOGY

KEYWORD : GRAVITY

- 1) GPA;BOX#07;01
AL LISAN - GEOL, GRAV INVEST, AGOCS, KAHR; GEOL 1:100,000; GRAV
1:10,000; 1962, 200-1-LIS-1
-GEOLOGY -GRAVITY -LOC:28/34C -LOC:28/34D -LOC:I-200 -
- 2) GPA;BOX#07;02
AL AYS - CHROMITE OCCURRENCES, GEOPHYS INVEST, AKHRAS; GRAV, GROUND
MAG 1:1,000; 1966, 204-1-AYS-1 (3 COPIES)
-GRAVITY -GROUND MAG -ORE DEPOSIT -LOC:25/38C -LOC:I-204 -
- 3) GPA;BOX#08;04
RABIGH - GRAVITY WORK, ZIDAN; 1:1,000; 1965, 210-1-RAB-1
-GRAVITY -LOC:22/39C -LOC:I-210 -

3 ITEMS HOLD THE KEYWORD : GRAVITY

KEYWORD : GROUND MAG

- 1) GPA;BOX#07;02
AL AYS - CHROMITE OCCURRENCES, GEOPHYS INVEST, AKHRAS; GRAV, GROUND
MAG 1:1,000; 1966, 204-1-AYS-1 (3 COPIES)
-GRAVITY -GROUND MAG -ORE DEPOSIT -LOC:25/38C -LOC:I-204 -
- 2) GPA;BOX#08;03
METHGAL - IRON DEPOSIT, TECH LTR #34, DAVIS, ALLEN; GROUND MAG; 1965,
210-3-MTH-1
-GROUND MAG -ORE DEPOSIT -LOC:22/39B -LOC:I-210 -

2 ITEMS HOLD THE KEYWORD : GROUND MAG

KEYWORD : GROUND RAD

- 1) GPA;BOX#06;02
HYLAYFAH/MUSAYNAAH - PRELIM RPT ON MINERAL RESOURCES & GEOL, DELFOUR;
205-2-MUS-HUL-2
-GEOLOGY -GEOCHEMISTRY-ORE DEPOSIT -ALLUVIAL PR.-GROUND RAD -
-LOC:25/40A -LOC:25/40B -LOC:I-205 -

1 ITEMS HOLD THE KEYWORD : GROUND RAD

KEYWORD : LOC:22/39B

- 1) GPA;BOX#08;03
METHGAL - IRON DEPOSIT, TECH LTR #34, DAVIS, ALLEN; GROUND MAG; 1965,
210-3-MTH-1
-GROUND MAG -ORE DEPOSIT -LOC:22/39B -LOC:I-210 -

1 ITEMS HOLD THE KEYWORD : LOC:22/39B

KEYWORD : LOC:22/39C

- 1) GPA;BOX#08;04
RABIGH - GRAVITY WORK, ZIDAN; 1:1,000 ; 1965, 210-1-RAB-1
-GRAVITY -LOC:22/39C -LOC:I-210 -

1 ITEMS HOLD THE KEYWORD : LOC:22/39C

KEYWORD : LOC:23/41A

- 1) GPA;BOX#06;04
AIR MAG & AIR RAD SHEET 112 - INTERP, LAMBOLEZ; 1:100,000; 1969, 69
JED 22, AMSC-112
-AIR MAG -AIR RAD -LOC:23/41A -LOC:23/41B -LOC:I-210 -

1 ITEMS HOLD THE KEYWORD : LOC:23/41A

KEYWORD : LOC:23/41B

- 1) GPA;BOX#06;04
AIR MAG & AIR RAD SHEET 112 - INTERP, LAMBOLEZ; 1:100,000; 1969, 69
JED 22, AMSC-112
-AIR MAG -AIR RAD -LOC:23/41A -LOC:23/41B -LOC:I-210 -

1 ITEMS HOLD THE KEYWORD : LOC:23/41B

KEYWORD : LOC:23/44A

- 1) GPA;BOX#06;05
AIR MAG & AIR RAD SHEET 115 - INTERP, MAILLARD; 1:100,000; 1968, 68
JED 54, A1-REG-2-2, AMSC-115
-AIR MAG -AIR RAD -LOC:23/44A -LOC:23/44B -LOC:I-211 -

1 ITEMS HOLD THE KEYWORD : LOC:23/44A

KEYWORD : LOC:23/44B

1) GPA;BOX#06;05

AIR MAG & AIR RAD SHEET 115 - INTERP, MAILLARD; 1:100,0000; 1968, 68

JED 54, A1-REG-2-2, AMSC-115

-AIR MAG -AIR RAD -LOC:23/44A -LOC:23/44B -LOC:I-211 -

1 ITEMS HOLD THE KEYWORD : LOC:23/44B

KEYWORD : LOC:24/44C

1) GPA;BOX#06;03

AIR MAG & AIR RAD SHEET 101 - INTERP, LAMBOLEZ; 1:100,0000; 1968, 68

JED 46, A1-REG-2-3, AMSC-101

-AIR MAG -AIR RAD -LOC:24/44C -LOC:24/44D -LOC:I-206 -

1 ITEMS HOLD THE KEYWORD : LOC:24/44C

KEYWORD : LOC:24/44D

1) GPA;BOX#06;03

AIR MAG & AIR RAD SHEET 101 - INTERP, LAMBOLEZ; 1:100,0000; 1968, 68

JED 46, A1-REG-2-3, AMSC-101

-AIR MAG -AIR RAD -LOC:24/44C -LOC:24/44D -LOC:I-206 -

1 ITEMS HOLD THE KEYWORD : LOC:24/44D

KEYWORD : LOC:25/37D

- 1) GPA;BOX#06;01
 N. AL AYS - PRELIM RPT ON MINERAL RESOURCES & GEOL, HENRY & LEFEYRE;
 204-2-AYS-3
 -GEOLOGY -ORE DEPOSIT -ALLUVIAL PR,-LOC:25/37D -LOC:25/38C -
 -LOC:I-204 -

1 ITEMS HOLD THE KEYWORD : LOC:25/37D

KEYWORD : LOC:25/38C

- 1) GPA;BOX#06;01
 N. AL AYS - PRELIM RPT ON MINERAL RESOURCES & GEOL, HENRY & LEFEYRE;
 204-2-AYS-3
 -GEOLOGY -ORE DEPOSIT -ALLUVIAL PR,-LOC:25/37D -LOC:25/38C -
 -LOC:I-204 -
- 2) GPA;BOX#07;02
 AL AYS - CHROMITE OCCURRENCES, GEOPHYS INVEST, AKHRAS; GRAV, GROUND
 MAG 1:1,000; 1966, 204-1-AYS-1 (3 COPIES)
 -GRAVITY -GROUND MAG -ORE DEPOSIT -LOC:25/38C -LOC:I-204 -

2 ITEMS HOLD THE KEYWORD : LOC:25/38C

KEYWORD : LOC:25/40A

- 1) GPA;BOX#06;02
 HYLAYFAH/MUSAYNAAH - PRELIM RPT ON MINERAL RESOURCES & GEOL, DELFOUR;
 205-2-MUS-HUL-2
 -GEOLOGY -GEOCHEMISTRY-ORE DEPOSIT -ALLUVIAL PR,-GROUND RAD -
 -LOC:25/40A -LOC:25/40B -LOC:I-205 -

1 ITEMS HOLD THE KEYWORD : LOC:25/40A

KEYWORD : LOC:25/40B

1) GPA;BOX#06;02

HYLAYFAH/MUSAYNAAH - PRELIM RPT ON MINERAL RESOURCES & GEOL, DELFOUR;
205-2-MUS-HUL-2
-GEOLOGY -GEOCHEMISTRY-ORE DEPOSIT -ALLUVIAL PR.-GROUND RAD -
-LOC:25/40A -LOC:25/40B -LOC:I-205 -

1 ITEMS HOLD THE KEYWORD : LOC:25/40B

KEYWORD : LOC:28/34C

1) GPA;BOX#07;01

AL LISAN - GEOL, GRAV INVEST, AGOCS, KAHR; GEOL 1:100,000; GRAV
1:10,000; 1962, 200-1-LIS-1
-GEOLOGY -GRAVITY -LOC:28/34C -LOC:28/34D -LOC:I-200 -

1 ITEMS HOLD THE KEYWORD : LOC:28/34C

KEYWORD : LOC:28/34D

1) GPA;BOX#07;01

AL LISAN - GEOL, GRAV INVEST, AGOCS, KAHR; GEOL 1:100,000; GRAV
1:10,000; 1962, 200-1-LIS-1
-GEOLOGY -GRAVITY -LOC:28/34C -LOC:28/34D -LOC:I-200 -

1 ITEMS HOLD THE KEYWORD : LOC:28/34D

KEYWORD : LOC:ALL S.A.

1) GPA;BOX#1/2/3/4/5;01

MISC: STRIP FILM NEG, SINGLE FR; AL AYS, AL LISAN, AL AQIQ, ETC., (10
 AREAS SCATTERED ACCROSS SHIELD); USGS, HUNTING; 1962
 -MISC -AIR MAG -AIR RAD -LOC:ALL S.A.-

1 ITEMS HOLD THE KEYWORD : LOC:ALL S.A.

KEYWORD : LOC:I-200

1) GPA;BOX#07;01

AL LISAN - GEOL, GRAV INVEST, AGOCS, KAHR; GEOL 1:100,000; GRAV
 1:10,000; 1962, 200-1-LIS-1
 -GEOLOGY -GRAVITY -LOC:28/34C -LOC:28/34D -LOC:I-200 -

1 ITEMS HOLD THE KEYWORD : LOC:I-200

KEYWORD : LOC:I-204

1) GPA;BOX#06;01

N. AL AYS - PRELIM RPT ON MINERAL RESOURCES & GEOL, HENRY & LEFEYRE;
 204-2-AYS-3
 -GEOLOGY -ORE DEPOSIT -ALLUVIAL PR.-LOC:25/37D -LOC:25/38C -
 -LOC:I-204 -

2) GPA;BOX#07;02

AL AYS - CHROMITE OCCURRENCES, GEOPHYS INVEST, AKHRAS; GRAV, GROUND
 MAG 1:1,000; 1966, 204-1-AYS-1 (3 COPIES)
 -GRAVITY -GROUND MAG -ORE DEPOSIT -LOC:25/38C -LOC:I-204 -

2 ITEMS HOLD THE KEYWORD : LOC:I-204

KEYWORD : LOC:I-205

1) GPA;BOX#06;02

HYLAYFAH/MUSAYNAAH - PRELIM RPT ON MINERAL RESOURCES & GEOL, DELFOUR;
 205-2-MUS-HUL-2
 -GEOLOGY -GEOCHEMISTRY-ORE DEPOSIT -ALLUVIAL PR.-GROUND RAD -
 -LOC:25/40A -LOC:25/40B -LOC:I-205 -

1 ITEMS HOLD THE KEYWORD : LOC:I-205

KEYWORD : LOC:I-206

1) GPA;BOX#06;03

AIR MAG & AIR RAD SHEET 101 - INTERP, LAMBOLEZ; 1:100,000; 1968, 68
 JED 46, A1-REG-2-3, AMSC-101
 -AIR MAG -AIR RAD -LOC:24/44C -LOC:24/44D -LOC:I-206 -

1 ITEMS HOLD THE KEYWORD : LOC:I-206

KEYWORD : LOC:I-210

1) GPA;BOX#06;04

AIR MAG & AIR RAD SHEET 112 - INTERP, LAMBOLEZ; 1:100,000; 1969, 69
 JED 22, AMSC-112
 -AIR MAG -AIR RAD -LOC:23/41A -LOC:23/41B -LOC:I-210 -

2) GPA;BOX#08;03

METHGAL - IRON DEPOSIT, TECH LTR #34, DAVIS, ALLEN; GROUND MAG; 1965,
 210-3-MTH-1
 -GROUND MAG -ORE DEPOSIT -LOC:22/39B -LOC:I-210 -

3) GPA;BOX#08;04

RABIGH - GRAVITY WORK, ZIDAN; 1:1,000 ; 1965, 210-1-RAB-1
 -GRAVITY -LOC:22/39C -LOC:I-210 -

3 ITEMS HOLD THE KEYWORD : LOC:I-210

KEYWORD : LOC:I-211

1) GPA;BOX#06105

AIR MAG & AIR RAD SHEET 115 - INTERP, MAILLARD; 1:100,000; 1968, 68
 JED 54, A1-REG-2-2, AMSC-115
 -AIR MAG -AIR RAD -LOC:23/44A -LOC:23/44B -LOC:I-211 -

1 ITEMS HOLD THE KEYWORD : LOC:I-211

KEYWORD : MISC

1) GPA;BOX#1/2/3/4/5101

MISC: STRIP FILM NEG, SINGLE FR; AL AYS, AL LISAN, AL AQIQ, ETC., (10
 AREAS SCATTERED ACCROSS SHIELD); USGS, HUNTING; 1962
 -MISC -AIR MAG -AIR RAD -LOC:ALL S.A.-

1 ITEMS HOLD THE KEYWORD : MISC

KEYWORD : ORE DEPOSIT

1) GPA;BOX#06101

N. AL AYS - PRELIM RPT ON MINERAL RESOURCES & GEOL, HENRY & LEFEYRE;
 204-2-AYS-3
 -GEOLOGY -ORE DEPOSIT -ALLUVIAL PR.-LOC:25/37D -LOC:25/38C -
 -LOC:I-204 -

2) GPA;BOX#06102

HYLAYFAH/MUSAYNAAH - PRELIM RPT ON MINERAL RESOURCES & GEOL, DELFOUR;
 205-2-MUS-HUL-2
 -GEOLOGY -GEOCHEMISTRY-ORE DEPOSIT -ALLUVIAL PR.-GROUND RAD -
 -LOC:25/40A -LOC:25/40B -LOC:I-205 -

- 3) GPA;BOX#07;02
AL AYS - CHROMITE OCCURRENCES, GEOPHYS INVEST, AKHRAS; GRAV, GROUND
MAG 1:1,000; 1966, 204-1-AYS-1 (3 COPIES)
-GRAVITY -GROUND MAG -ORE DEPOSIT -LOC:25/38C -LOC:I-204 -

- 4) GPA;BOX#08;03
METHGAL - IRON DEPOSIT, TECH LTR #34, DAVIS, ALLEN; GROUND MAG; 1965,
210-3-MTH-1
-GROUND MAG -ORE DEPOSIT -LOC:22/39B -LOC:I-210 -

4 ITEMS HOLD THE KEYWORD : ORE DEPOSIT

26-JUN-78

JOB NO. 12

INDEXED ID LIST

INDEX BY KEYWORD

KEYWORD : GEOLOGY

- 1- GPA;BOX#06;01
- 2- GPA;BOX#06;02
- 3- GPA;BOX#07;01

3 ITEMS HOLD THE KEYWORD : GEOLOGY

KEYWORD : LOC:I-204

- 1- GPA;BOX#06;01
- 2- GPA;BOX#07;02

2 ITEMS HOLD THE KEYWORD : LOC:I-204

JOB No. 13

INDEXED ITEM LIST

INDEX BY KEYWORD

26-JUN-78

KEYWORD : GEOLOGY

- 1) GPA;BOX#06;01
N. AL AYS - PRELIM RPT ON MINERAL RESOURCES & GEOL, HENRY &LEFEYRE;
204-2-AYS-3
-GEOLOGY -ORE DEPOSIT -ALLUVIAL PR.-LOC:25/37D -LOC:25/38C -
-LOC:I-204 -
- 2) GPA;BOX#06;02
HYLAYFAH/MUSAYNAAH - PRELIM RPT ON MINERAL RESOURCES & GEOL, DELFOUR;
205-2-MUS-HUL-2
-GEOLOGY -GEOCHEMISTRY-ORE DEPOSIT -ALLUVIAL PR.-GROUND RAD -
-LOC:25/40A -LOC:25/40B -LOC:I-205 -
- 3) GPA;BOX#07;01
AL LISAN - GEOL, GRAV INVEST, AGOCS, KAHR; GEOL 1:100,000; GRAV
1:10,000; 1962, 200-1-LIS-1
-GEOLOGY -GRAVITY -LOC:28/34C -LOC:28/34D -LOC:I-200 -

3 ITEMS HOLD THE KEYWORD : GEOLOGY

KEYWORD : LOC:I-204

- 1) GPA;BOX#06;01
N. AL AYS - PRELIM RPT ON MINERAL RESOURCES & GEOL, HENRY &LEFEYRE;
204-2-AYS-3
-GEOLOGY -ORE DEPOSIT -ALLUVIAL PR.-LOC:25/37D -LOC:25/38C -
-LOC:I-204 -
- 2) GPA;BOX#07;02
AL AYS - CHROMITE OCCURRENCES, GEOPHYS INVEST, AKHRAS; GRAV, GROUND
MAG 1:1,000; 1966, 204-1-AYS-1 (3 COPIES)
-GRAVITY -GROUND MAG -ORE DEPOSIT -LOC:25/38C -LOC:I-204 -

2 ITEMS HOLD THE KEYWORD : LOC:I-204

JOB No. 14

INDEXED ID LIST

INDEX BY KEYWORD

KEYWORD BEGINNING WITH : GEO

- 1- GPA;BOX#06;01
- 2- GPA;BOX#06;02
- 3- GPA;BOX#07;01

3 ITEMS HOLD A KEYWORD BEGINNING WITH : GEO

KEYWORD BEGINNING WITH : LOC:I-20

- 1- GPA;BOX#06;01
- 2- GPA;BOX#06;02
- 3- GPA;BOX#06;03
- 4- GPA;BOX#07;01
- 5- GPA;BOX#07;02

5 ITEMS HOLD A KEYWORD BEGINNING WITH : LOC:I-20

JOB NO. 15

INDEXED ITEM LIST

INDEX BY KEYWORD

26-JUN-78

KEYWORD BEGINNING WITH : GEO

- 1) GPA:BOX#06:01
N. AL AYS - PRELIM RPT ON MINERAL RESOURCES & GEOL, HENRY & LEFEYRE;
204-2-AYS-3
-GEOLOGY -ORE DEPOSIT -ALLUVIAL PR.-LOC:25/37D -LOC:25/38C -
-LOC:I-204 -
- 2) GPA:BOX#06:02
HYLAYFAH/MUSAYNAAH - PRELIM RPT ON MINERAL RESOURCES & GEOL, DELFOUR;
205-2-MUS-HUL-2
-GEOLOGY -GEOCHEMISTRY-ORE DEPOSIT -ALLUVIAL PR.-GROUND RAD -
-LOC:25/40A -LOC:25/40B -LOC:I-205 -
- 3) GPA:BOX#07:01
AL LISAN - GEOL, GRAV INVEST, AGOCS, KAHR; GEOL 1:100,000; GRAV
1:10,000; 1962, 200-1-LIS-1
-GEOLOGY -GRAVITY -LOC:28/34C -LOC:28/34D -LOC:I-200 -

3 ITEMS HOLD A KEYWORD BEGINNING WITH : GEO

KEYWORD BEGINNING WITH : LOC:I-20

- 1) GPA:BOX#06:01
N. AL AYS - PRELIM RPT ON MINERAL RESOURCES & GEOL, HENRY & LEFEYRE;
204-2-AYS-3
-GEOLOGY -ORE DEPOSIT -ALLUVIAL PR.-LOC:25/37D -LOC:25/38C -
-LOC:I-204 -
- 2) GPA:BOX#06:02
HYLAYFAH/MUSAYNAAH - PRELIM RPT ON MINERAL RESOURCES & GEOL, DELFOUR;
205-2-MUS-HUL-2
-GEOLOGY -GEOCHEMISTRY-ORE DEPOSIT -ALLUVIAL PR.-GROUND RAD -
-LOC:25/40A -LOC:25/40B -LOC:I-205 -
- 3) GPA:BOX#06:03
AIR MAG & AIR RAD SHEET 101 - INTERP, LAMBOLEZ; 1:100,000; 1968, 68
JED 46, A1-REG-2-3, AMSC-101
-AIR MAG -AIR RAD -LOC:24/44C -LOC:24/44D -LOC:I-206 -

4) GPA;BOX#07;01
AL LISAN - GEOL, GRAV INVEST, AGOCS, KAHR; GEOL 1:100,000; GRAV
1:10,000; 1962, 200-1-LIS-1
-GEOLOGY -GRAVITY -LOC:28/34C -LOC:28/34D -LOC:I-200 -

5) GPA;BOX#07;02
AL AYS - CHROMITE OCCURRENCES, GEOPHYS INVEST, AKHRAS; GRAV, GROUND
MAG 1:1,000; 1966, 204-1-AYS-1 (3 COPIES)
-GRAVITY -GROUND MAG -ORE DEPOSIT -LOC:25/38C -LOC:I-204 -

5 ITEMS HOLD A KEYWORD BEGINNING WITH : LOC:I-20

SOURCE PROGRAM LISTING

<u>Routine</u>	<u>Page</u>
GENDOC	66
READID	67
REATEX	68
WRITID	69
WRITEX	70
PAGES	72
SEQUEN	73
INDEX	74
READSØ	75
ENTKEY	76
IEQ	77
INDEXI	78
INBEGI	79
INCOMI	81
INDEXK	82
READS1	84
ULKEY	85
INDSEV	87
INDONE	89
IND11	91

```

0001      PROGRAM GENDOC
          C
          C      PRINT SEQUENTIAL OR INDEXED LISTS OF ID OR ITEMS OF GENERAL
          C      DOCUMENTATION FILE.
          C      M.D. 31-MAY-77 / UPDATE JAN 78
          C
0002      LOGICAL*1 FILEN1,FILEN3,FILEN4
0003      LOGICAL*1 ID,KEYWOR,DAT,DAT1,ALLKEY,KEY,TAM
0004      COMMON/UNIT/IO1,IO2,IO3,ITT,IOW,FILEN1(20),FILEN3(20),FILEN4(20)
0005      COMMON/IDREC/ID(20),NEND,NKEY,KEYWOR(12,10),NTEX
0006      COMMON/PRINTS/NLINE,NPAGE,JO,DAT(10),NID,IPL,IKEY,IOPT,ICOM,ICAS,
          INCOP
0007      COMMON/KEYS/DAT1(10),NALL,ALLKEY(12,250),NREP(250)
0008      COMMON/BIDON/NCHAR(50),KEY(12,50),TAM(12)
0009      DATA IO1/1/,IO2/2/,IO3/3/,ITT/5/,IOW/4/
          C
0010      2000  FORMAT(' THIS PROGRAM PRINTS SEQUENTIAL/',
0011              1'INDEXED LIST OF ID/ITEMS OF GENERAL'/' DOCUMENTATION FILE.'/)
0012      2001  FORMAT('/ JOB NO.',I3/IX,10(1H*))
0013      2002  FORMAT('/ ENTER THE FOLLOWING ABOUT ITEM LIST PRINTOUTS :'/
0014              3' = WANT TO GO TO NEXT PAGE (1), OR LINE (2) BETWEEN ITEMS ?')
          C
0015      CALL DATE (DAT)
0016      WRITE(ITT,2000)
0017      10    CALL TTINAA ('FILENAME OF GENERAL DOCUMENTATION FILE',30,
0018              1 FILEN1,20,ITT)
0019      CALL ASSIGN (IO1,FILEN1)
0020      CALL TTINAA ('FILENAME OF PRINTER FILE',24,FILEN4,20,ITT)
0021      CALL ASSIGN (IOW,FILEN4)
0022      5    WRITE(ITT,2002)
0023      CALL TTINSI ('ENTER 1 OR 2',12,IPL,ITT)
0024      CALL TTINAA ('WANT TO PRINT KEYWORDS WITH EACH ITEM (Y OR N)',46,
0025              1IKEY,2,ITT)
          C
0026      12    JO=0
0027      15    JO=JO+1
0028      WRITE(ITT,2001) JO
0029      CALL TTINSI ('SEQUENTIAL (1), OR INDEX (2) PROCEDURE',30,18,ITT)
0030      GOTO (110,120) IS
0031      110   CALL SEQUEN
0032      C
0033      C      -----
0034      GOTO 8000
0035      120   CALL INDEX
0036      C
0037      C      -----
0038      8000  CALL TTINAA ('WANT TO END PROGRAM (Y OR N)',28,IAN,2,ITT)
0039      IF (IAN.EQ.'N') GOTO 15
0040      CALL CLOSE (IO1)
0041      CLOSE (UNIT=IOW)
0042      STOP '*** END OF PROGRAM ***'
0043      END
  
```

```
0001      SUBROUTINE READID
          C      -----
          C      READ ONE ID RECORD
0002      LOGICAL*1 KEYWOR, ID
0003      COMMON/UNIT/IO1, IO2, IO3, ITT, IOW
0004      COMMON/IDREC/ID(20), NEND, NKEY, KEYWOR(12,10), NTEX
0005      2000  FORMAT(' *** ERROR WHILE READING ID RECORD :'/
          C      1' ID: ', 20A1, ' NTEX: ', I5, 5X, ' NKEY: ', I3, ' KEYWOR: ', (T10, 60A1))
          C
0006      NEND=0
0007      READ (IO1, END=500, ERR=600) ID, NTEX, NKEY,
          C      1((KEYWOR(I, J), I=1, 12), J=1, NKEY)
0008      RETURN
          C
0009      500  NEND=1
0010      RETURN
0011      600  WRITE (ITT, 2000) ID, NTEX, NKEY, KEYWOR
0012      STOP ' *** CORRECT THIS ID RECORD. *** '
0013      END
```

```
0001          SUBROUTINE REATEX
              C
              C -----
              C READ TEXT RECORDS TO SKIP THEM
0002          LOGICAL*1 ID,KEYWOR
0003          COMMON/UNIT/IO1,IO2,IO3,ITT,IOW
0004          COMMON/IDREC/ID(20),NEND,NKEY,KEYWOR(12,10),NTEX
              C
0005          DO 10 I=1,NTEX
0006          10  READ (IO1,END=500,ERR=600)
0007          RETURN
              C
0008          500  STOP ' *** END OF FILE NOT EXPECTED. ***'
0009          600  STOP ' *** ERROR WHILE READING ID RECORD. ***'
0010          END
```

```
0001      SUBROUTINE WRITID (LID,N0,J,IREP,NREP)
          C -----
          C  PRINT LIST STORED IN ARRAY LID, AND NB OF OCCURRENCES NREP IF IREP=1
0002      LOGICAL*1 LID(1),DAT
0003      COMMON/UNIT/IU1,I02,I03,ITT,IOW
0004      COMMON/PRINTS/NLINE,NPAGE,JO,DAT(10),NBID,IPL,IKEY,IOPT,ICOM,ICAS,
          1NCOP
0005      DIMENSION NREP(1)
0006      2200  FORMAT(T28,I4,'- ',<N0>A1)
0007      2201  FORMAT(1H+,T60,I4)
          C
0008      IF (NLINE.GE.60) CALL PAGES
          C -----
0009      WRITE(IOW,2200) J,(LID(I),I=1,N0)
0010      NLINE=NLINE+1
0011      IF (IREP.EQ.0) RETURN
0012      WRITE(IOW,2201) NREP(J)
0013      RETURN
0014      END
```

```

0001      SUBROUTINE WRITEX
          C -----
          C PRINT ID, KEYWORDS, TEXT FOR ONE ITEM
0002      LOGICAL*1 ID,KEYWOR,DAT,BID(79)
0003      COMMON/UNIT/IO1,IO2,IO3,ITT,IOW
0004      COMMON/IDREC/ID(20),NEND,NKEY,KEYWOR(12,10),NTEX
0005      COMMON/PRINTS/NLINE,NPAGE,JO,DAT(10),NID,IPL,IKEY,IOPT,ICOM,ICAS,
          INCOPI
0006      2000 FORMAT(I4,' '),T15,20A1/1X,4(1H+)/)
0007      2001 FORMAT(1X,'KEYWORDS :',T15,<N1>(12A1,'-'))
0008      2002 FORMAT(1X,'+++++',T10,<N2>(12A1,'-'))///)
0009      2003 FORMAT(1H1)
0010      2004 FORMAT(/15,' ')',20A1)
0011      2005 FORMAT(1X,8(1H+)/)///)
0012      2006 FORMAT(1X,79A1)
0013      2007 FORMAT(' *** END OF FILE NOT EXPECTED. LAST READ TEXT',
          7' RECORD :')
0014      2008 FORMAT(' *** ERROR WHILE READING TEXT RECORD :')
0015      2009 FORMAT(T10,70A1)
0016      2010 FORMAT(10X,<N1>(' ',12A1),'-')
          C
0017      N1=NKEY
0018      N2=NKEY-6
0019      IF (NKEY.GT.5) N1=5
0020      IF (IPL.EQ.1) GOTO 50
0021      IF ((NLINE+NTEX+4).GE.60) CALL PAGES
          C -----
0022      WRITE(IOW,2004) NID,ID
0023      NLINE=NLINE+2
0024      GOTO 30
0025      50 CALL PAGES
          C -----
0026      WRITE(IOW,2000) NID,ID
0027      IF (IKEY.EQ.2) GOTO 30
          C
0028      WRITE(IOW,2001) ((KEYWOR(I,J),I=1,12),J=1,N1)
0029      IF (NKEY.LT.5) GOTO 40
0030      WRITE(IOW,2002) ((KEYWOR(I,J),I=1,12),J=6,NKEY)
0031      GOTO 30
0032      40 WRITE(IOW,2005)
          C
0033      DO 10 I=1,NTEX
0034      30 READ (IO1,END=500,ERR=600) BID
0035      IF (BID(1).EQ."014") CALL PAGES
          C -----
0036      WRITE(IOW,2006) BID
0037      NLINE=NLINE+1
0038      10 CONTINUE
          C
0039      IF ((IPL.EQ.1).OR.(IKEY.EQ.2)) RETURN
0040      WRITE(IOW,2010) ((KEYWOR(I,J),I=1,12),J=1,N1)
0041      NLINE=NLINE+1
0042      IF (NKEY.LT.6) RETURN
0043      N1=N2
0044      WRITE(IOW,2010) ((KEYWOR(I,J),I=1,12),J=6,NKEY)
0045      NLINE=NLINE+1
  
```

```
0040          RETURN
              C
0047          500  WRITE(ITT,2007)
0048          GOTO 650
0049          600  WRITE(ITT,2008)
0050          650  WRITE(ITT,2009) BID
0051          STOP ' *** CORRECT THE FILE. *** '
0052          END
```

```
0001      SUBROUTINE PAGES
          C      -----
0002      LOGICAL*1 DAT
0003      COMMON/UNIT/IO1,IO2,IO3,ITT,IOW
0004      COMMON/PRINTS/NLINE,NPAGE,JO,DAT(10),NID,IPL,IKEY,IOPT,ICOM,ICAS,
          INCOP
0005      2200  FORMAT(1H1,T68,'PAGE',I4/)
          C
0006      NPAGE=NPAGE+1
0007      WRITE(10W,2200) NPAGE
0008      NLINE=NLINE+1
0009      RETURN
0010      END
```



```

0001          SUBROUTINE SEQUEN
              C -----
              C SEQUENTIAL PROCEDURE
              C
0002          LOGICAL*1 FILEN1,FILEN3,FILEN4
0003          LOGICAL*1 ID,KEYWOR,DAT,DAT1,ALLKEY,KEY,TAM
0004          COMMON/UNIT/I01,I02,I03,ITT,IOW,FILEN1(20),FILEN3(20),FILEN4(20)
0005          COMMON/IDREC/ID(20),NEND,NKEY,KEYWOR(12,10),NTEX
0006          COMMON/PRINT8,NLINE,NPAGE,JO,DAT(10),NID,IPL,IKEY,IOPT,ICOM,ICAS,
              1NCOP
0007          COMMON/KEYS/DAT1(10),NALL,ALLKEY(12,250),NREP(250)
0008          COMMON/BIDON/NCHAR(50),KEY(12,50),TAM(12)
              C
0009          2200 FORMAT(' JOB NO.',I3,T20,'SEQUENTIAL ID LIST',T67,10A1/
              11X,10(1H*),T20,10(1H*)//)
0010          2201 FORMAT('// FILE ',20A1,' HOLDS',I4,' ITEMS'/
              11X,40(1H*))
0011          2202 FORMAT(' JOB NO.',I3,T20,'SEQUENTIAL ITEM LIST',T67,10A1/
              21X,10(1H*),T20,20(1H*)//)
              C
0012          CALL TTINSI ('PRINT ID LIST (1), OR ITEM LIST (2)',J5,IOPT,ITT)
0013          CALL TTINSI ('NUMBER OF COPIES',10,NCOP,ITT)
0014          DO 200 I=1,NCOP
0015          NPAGE=0
0016          CALL PAGES
              C
              C -----
0017          IF (IOPT.EQ.1) WRITE(IOW,2200) JO,DAT
0018          IF (IOPT.EQ.2) WRITE(IOW,2202) JO,DAT
0019          NLINE=NLINE+8
0020          NID=0
0021          REWIND IO1
0022          120 CALL READID
              C
              C -----
0023          IF (NEND.EQ.1) GOTO 300
0024          NID=NID+1
0025          IF (IOPT.EQ.2) GOTO 310
0026          CALL WRITID (ID,20,NID,0,NREP)
              C
              C -----
0027          CALL REATEX
              C
              C -----
0028          GOTO 120
0029          310 CALL WRITEX
              C
              C -----
0030          GOTO 120
              C -----
0031          300 IF (IOPT.EQ.2) GOTO 320
0032          IF (NLINE.GE.56) CALL PAGES
              C
              C -----
0033          GOTO 330
0034          320 IF ((IPL.EQ.1).OR.(NLINE.GE.56)) CALL PAGES
              C
              C -----
0035          330 WRITE(IOW,2201) FILEN1,NID
0036          200 CONTINUE
0037          RETURN
0038          END
  
```

```
0001          SUBROUTINE INDEX
              C          -----
              C          INDEX PROCEDURE
0002          COMMON/UNIT/IO1,IO2,IO3,ITT,IOW
              C
0003          CALL TTINSI ('INDEX BY ID (1), OR BY KEYWORD (2)',34,IOPT,ITT)
0004          GOTO (110,120) IOPT
0005          110      CALL INDEXI
              C          -----
0006          RETURN
0007          120      CALL INDEXK
              C          -----
0008          RETURN
0009          END
```

```
0001      SUBROUTINE READS0
          C -----
          C  HEADS ID/ITEM LIST, & NO OF COPIES
0002      LOGICAL*1 DAT
0003      COMMON/UNIT/IO1,IO2,IO3,ITT,IOW
0004      COMMON/PRINTS/NLINE,NPAGE,JO,DAT(10),NID,IPL,IKEY,IOPT,ICOM,ICAS,
          1NCOP
          C
0005      CALL TTINSI ('PRINT ID LIST (1), OR ITEM LIST (2)',J5,IOPT,ITT)
0006      ICAS=,
0007      IF ((IOPT.EQ.2).AND.(IPL.EQ.1)) ICAS=1
0008      CALL TTINSI ('NUMBER OF COPIES',16,NCOP,ITT)
0009      RETURN
0010      END
```

```

0001      SUBROUTINE ENTKEY (KEY,N1,N2,NK,NCHAR,ICHECK,ALLKEY,M1,M2,ITT)
C      -----
C      ENTER KEYWORDS FROM ITT
C      KEY      ARRAY TO STORE KEYWORDS, LOGICAL*1
C      N1,N2    DIMENSIONS OF KEY
C      NK      NO OF KEYWORDS (<=N2)
C      NCHAR   ARRAY CONTAINING NO OF CHARACTERS OF EACH KEYWORD
C      ICHECK  #0, NO CHECK OF KEY WITH ALLKEY
C             #1, CHECK OF KEY WITH ALLKEY
C      ALLKEY  ARRAY CONTAINING LIST OF ALL AVAILABLE KEYWORDS
C      M1,M2   DIMENSIONS OF ALLKEY
C
0002      LOGICAL*1 KEY(N1,N2),ALLKEY(M1,M2),BLANC(20)
0003      LOGICAL*4 KEND,LEND
0004      DIMENSION NCHAR(N2)
0005      DATA BLANC/20*1H /,KEND/'END '/
0006      1000  FORMAT(Q,20A1)
0007      2000  FORMAT(' MORE THAN ',I4,' ENTRIES. '/ ' ONLY THE FIRST ',I4,
1' ENTRIES ARE KEPT. ')
0008      2001  FORMAT(10X,I3,' : 'S)
0009      2002  FORMAT(' THIS ENTRY IS NOT IN THE FILE. ')
C
0010      DO 100 I=1,N2
0011      100  CALL MOVE (BLANC,KEY(1,I),N1)
C ----- ENTER KEYWORDS -----
0012      NK=0
0013      600  NK=NK+1
0014      IF(NK,LE,N2) GOTO 604
0015      WRITE(ITT,2000) N2,N2
0016      NK=N2
0017      RETURN
0018      604  WRITE(ITT,2001) NK
0019      READ (ITT,1000) NC,(KEY(I,NK),I=1,NC)
0020      NCHAR(NK)=NC
0021      CALL MOVE (KEY(1,NK),LEND,4)
0022      IF (LEND.EQ,KEND) GOTO 605
0023      IF (ICHECK.EQ,0) GOTO 600
C ----- ENTERED KEYWORD IS COMPARED WITH ALLKEY
0024      DO 601 J=1,M2
0025      IF (IEQ(KEY(1,NK),ALLKEY(1,J),NC),EQ,1) GOTO 600
0026      601  CONTINUE
0027      WRITE(ITT,2002)
0028      NK=NK-1
0029      GOTO 600
C
0030      605  NK=NK-1
0031      RETURN
0032      END

```

```
0001      FUNCTION IEQ (A,B,N)
          C      -----
          C      FINDS IF ARRAY A IS EQUAL TO ARRAY B
0002      C      LOGICAL*1 A(1),B(1)
          C
0003      IEQ=0
0004      DO 100 I=1,N
0005      IF (A(I).NE.B(I)) RETURN
0006      100  CONTINUE
0007      IEQ=1
0008      RETURN
0009      END
```

```
0001          SUBROUTINE INDEXI
              C
              C -----
              C INDEX BY ID
0002          COMMON/UNIT/IO1,IO2,IO3,ITT,IOW
0003          2000 FORMAT(' ENTER ID (ENTER 'END' TO END LIST) : ')
0004          2001 FORMAT(' ENTER FIRST CHARACTERS OF ID (ENTER 'END' TO END',
              2' LIST) : ')
              C
0005          CALL TTINSI ('ENTER COMPLETE ID (1), OR FIRST CHARACTERS OF ID (2)',
152,IOPT,ITT)
0006          GOTO (110,120) IOPT
0007          110  WRITE(ITT,2000)
0008          CALL INCOMI
              C
              C -----
0009          RETURN
0010          120  WRITE(ITT,2001)
0011          CALL INBEPI
              C
              C -----
0012          RETURN
0013          END
```

```

0001      SUBROUTINE INBEGI
          C
          C -----
          C INDEX BY ID, BEGINNING OF ID, ID OR ITEM LIST.
0002      LOGICAL+1 FILEN1,FILEN3,FILEN4
0003      LOGICAL+1 ID,KEYWORD,DATE,KEY,KID,TAM
0004      COMMON/UNIT/IO1,IO2,IO3,ITT,IOW,FILEN1(20),FILEN3(20),FILEN4(20)
0005      COMMON/IDREC/ID(20),NEND,NKEY,KEYWOR(12,10),NTEX
0006      COMMON/PRINTS/NLINE,NPAGE,JO,DATE(10),NID,IPL,IKEY,IOPT,ICOM,ICAS,
          INCOP
0007      COMMON/KEYS/KID(20,50)
0008      COMMON/BIDON/NCHAR(50),KEY(12,50),TAM(12)
0009      2000  FORMAT(/' ITEMS ARE PRINTED AS FOLLOWS :')
0010      2001  FORMAT(T15,I4,'- ',20A1)
0011      2002  FORMAT(I4,' ' ',20A1)
0012      2200  FORMAT(' JOB NO.',I3,T20,'INDEXED ID LIST',T67,10A1/
          91X,10(1H+),T20,15(1H+)/T22,'INDEX BY ID'////)
0013      2201  FORMAT(' JOB NO.',I3,T20,'INDEXED ITEM LIST',T67,10A1/
          11X,10(1H+),T20,17(1H+)/T23,'INDEX BY ID'////)
0014      2202  FORMAT(' ID BEGINNING WITH : ',<NC>A1/1X,<20+NC>(1H+)/)
0015      2203  FORMAT(//I4,' ID BEGIN WITH : ',<NC>A1/1X,<20+NC>(1H+)////)
          C
0016      CALL ENTKEY (KID,20,50,NIDS,NCHAR,0,BIDON,1,1,ITT)
          C
          C -----
0017      CALL READS0
          C
          C -----
0018      DO 170 I=1,NCOP
0019      NPAGE=0
0020      CALL PAGES
          C
          C -----
0021      IF (IOPT.EQ.1) WRITE(IOW,2200)JO,DATE
0022      IF (IOPT.EQ.2) WRITE(IOW,2201)JO,DATE
0023      NLINE=NLINE+6
0024      IF (I.EQ.1) WRITE(ITT,2000)
          C
0025      DO 175 NIDT=1,NIDS
0026      NC=NCHAR(NIDT)
0027      IF ((ICAS.EQ.1).OR.(NLINE.GE.53)) CALL PAGES
          C
          C -----
0028      WRITE(IOW,2202) (KID(K,NIDT),K=1,NC)
0029      NLINE=NLINE+7
0030      REWIND IO1
0031      IF (I.EQ.1) WRITE(ITT,2002) NIDT,(KID(K,NIDT),K=1,NC)
0032      NID=0
0033      190  CALL READID
          C
          C -----
0034      IF (NEND.EQ.1) GOTO 165
0035      IF (IEQ(ID,KID(1,NIDT),NC).EQ.0) GOTO 176
0036      NID=NID+1
0037      IF (I.EQ.1) WRITE(ITT,2001) NID,(ID(K),K=1,20)
0038      IF (IOPT.EQ.2) GOTO 210
0039      CALL WRITID (ID,20,NID,0,NREP)
          C
          C -----
0040      176  CALL REATEX
          C
          C -----
0041      GOTO 190
  
```

```
0042 210 CALL WRITEX  
      C -----  
0043      GOTO 190  
      C  
0044 165 IF (NID.EQ.0) GOTO 220  
0045 220 IF ((ICAS.EQ.1).OR.(NLINE.GE.52)) CALL PAGES  
      C -----  
0046      WRITE(IOW,2203) NID,(KID(K,NIDT),K=1,NC)  
0047      NLINE=NLINE+8  
0048 175 CONTINUE  
      C  
0049 170 CONTINUE  
0050      RETURN  
0051      END
```



```

0001      SUBROUTINE INCOMI
          C
          C -----
          C INDEX BY ID, COMPLETE ID. LIST IS ITEM LIST ONLY
0002      LOGICAL*1 FILEN1,FILEN3,FILEN4
0003      LOGICAL*1 ID,KEYWOR,DA1,DAT1,ALLKEY,KEY,TAM,KID
0004      COMMON/UNIT/IO1,IO2,IO3,ITT,IOW,FILEN1(20),FILEN3(20),FILEN4(20)
0005      COMMON/IDREC/ID(20),NEND,NKEY,KEYWOR(12,10),NTEX
0006      COMMON/PRINTS/NLINE,NPAGE,JO,DAT(10),NID,IPL,IKEY,IOPT,ICOM,ICAS,
          1NCOP
0007      COMMON/KEYS/KID(20,50)
0008      COMMON/BIDON,NCHAR(50),KEY(12,50),TAM(12)
0009      2000 FORMAT(/' ITEMS ARE PRINTED AS FOLLOWS ')
0010      2001 FORMAT(T15,I4,'- ',20A1)
0011      2002 FORMAT(' THIS ID IS NOT IN THE FILE ',20A1)
0012      2200 FORMAT(' JOB NO.',I3,T40,'INDEXED ITEM LIST',T67,10A1/
          41X,10(1H+),T20,17(1H+)/T23,'INDEX BY ID'//)
0013      2201 FORMAT(//I5,' ')',20A1,T40,'IS NOT IN THE FILE ',
          820A1/T40,39(1H+)/)

          C
0014      CALL ENTKEY (KID,20,100,NIDS,NCHAR,0,BIDON,1,1,ITT)
          C
          C -----
0015      CALL TTINS7 ('NUMBER OF COPIES',10,NCOP,ITT)
0016      DO 170 I=1,NCOP
0017      NPAGE=0
0018      CALL PAGES
          C
          C -----
0019      WRITE(IOW,2200) JO,DAT
0020      NLINE=NLINE+5
0021      IF (I.EQ.1) WRITE(ITT,2000)
0022      DO 175 NID=1,NIDS
0023      REWIND IO1
0024      IF (I.EQ.1) WRITE(ITT,2001) NID,(KID(K,NID),K=1,20)
0025      190 CALL READID
          C
          C -----
0026      IF (NEND.EQ.1) GOTO 160
0027      IF ((IEQ(ID,KID(1,NID),20).EQ.0) GOTO 176
0028      CALL WRITEX
          C
          C -----
0029      GOTO 175
0030      176 CALL REATEX
          C
          C -----
0031      GOTO 190
0032      160 WRITE(ITT,2002) FILEN1
0033      IF ((IPL.EQ.1).OR.(NLINE.GE.54)) CALL PAGES
          C
          C -----
0034      160 WRITE(IOW,2201) NID,(KID(K,NID),K=1,20),FILEN1
0035      NLINE=NLINE+6
0036      175 CONTINUE
0037      170 CONTINUE
0038      RETURN
0039      END
  
```

```

0001      SUBROUTINE INDEXK
          C
          C -----
          C INDEX BY KEYWORD
0002      LOGICAL*1 FILEN1,FILEN3,FILEN4
0003      LOGICAL*1 ID,KEYWOR,DA1,DAT1,ALLKEY,KEY,TAM
0004      COMMON/UNIT/IO1,IO2,IO3,ITT,IOW,FILEN1(20),FILEN3(20),FILEN4(20)
0005      COMMON/IDREC/ID(20),NEND,NKEY,KEYWOR(12,10),NTEX
0006      COMMON/PRINTS/N,INE,NPAGE,JO,DAT(10),NID,IPL,IKEY,IOPT,ICOM,ICAS,
          INCOPI
0007      COMMON/KEYS/DAT1(10),NALL,ALLKEY(12,250),NREP(250)
0008      COMMON/BIDON/NCHAR(50),KEY(12,50),TAM(12)
0009      2000  FORMAT('/ SELECT FROM THESE TWO OPTIONS :'/
          1T10,'1= ONLY ONE SEARCH WITH SEVERAL KEYWORDS'/
          2T10,'2= SEVERAL SEARCHES WITH ONE KEYWORD EACH TIME')
0010      2200  FORMAT(' JOB NO.',I3,T20,' LIST OF ALL KEYWORDS',T97,10A1/
          11X,10(1H+),T20,20(1H+)//)
0011      2201  FORMAT(' THERE ARE',I4,' DIFFERENT KEYWORDS.'/ ' LIST MADE ',
          2'ON ',10A1,5X,' HAS BEEN READ/STORED ON FILE ',20A1,
          3 //T34,'KEYWORD',T57,'NB OF OCCURRENCES'//)
          C
0012      CALL TTINAA ('NEED TO UPDATE/CREATE LIST OF ALL KEYWORDS (Y OR N)',
          181,IAN,2,ITT)
0013      CALL TTINAA ('FILENAME OF KEYWORD FILE',24,FILEN3,20,ITT)
0014      OPEN (UNIT=IO3,NAME=FILEN3,TYPE='UNKNOWN')
0015      IF (IAN.EQ.'N') GOTO 540
          C----- UPDATE LIST OF ALL KEYWORDS -----
0016      200  CALL MOVE (DAT,DAT1,10)
0017      CALL ULKEY
          C
          C -----
0018      GOTO 530
          C----- READ LIST OF ALL KEYWORDS -----
0019      540  CONTINUE
0020      CALL RLKEY
          C
          C -----
0021      530  CALL TTINAA ('WANT A LIST OF ALL KEYWORDS (Y OR N)',36,IAN,2,ITT)
0022      IF (IAN.EQ.'N') GOTO 560
          C----- PRINT LIST OF ALL KEYWORDS -----
0023      CALL TTINSI ('BY ALPHABETICAL (1), OR NB OF OCCURRENCES (2) ORDER'
          1 ,51,NOC,ITT)
0024      IF (NOC.EQ.1) GOTO 800
0025      CALL OCKEY
          C
          C -----
0026      800  CALL TTINSI ('NUMBER OF COPIES',16,NCOP,ITT)
0027      DO 560 J=1,NCOP
0028      NPAGE=0
0029      CALL PAGES
          C
          C -----
0030      WRITE(IOW,2200) JO,DAT
0031      WRITE(IOW,2201) NALL,DAT1,FILEN3
0032      NLINE=NLINE+10
0033      DO 100 I=1,NALL
0034      100  CALL WRITID (ALLKEY(1,I),12,I,1,NREP)
          C
          C -----
0035      560  CONTINUE
0036      580  CLOSE(UNIT=IO3)
0037      WRITE(ITT,2000)
  
```

```
0038      CALL TTINSI ('ENTER 1 OR 2',12,IS,ITT)
0039      GOTO (610,620) IS
0040      610  CALL INDSEV
           C      -----
0041      RETURN
0042      620  CALL INDONE
           C      -----
0043      RETURN
0044      END
```

```
0001      SUBROUTINE READS1
          C -----
          C  READS COMPLETE KEYWORD OR BEGINNING OF KEYWORD
0002      LOGICAL*1 DAT
0003      COMMON/UNIT/I01,I02,I03,ITT,IOW
0004      COMMON/PRINTS/NLINE,NPAGE,JO,DAT(10),NID,IPL,IKEY,IOPT,ICOM,ICAS,
          1NCOP
0005      2000  FORMAT(/' ENTER KEYWORDS (ENTER 'END' TO END LIST) :')
0006      2001  FORMAT(/' ENTER BEGINNING OF KEYWORDS (ENTER 'END' TO END',
          2' LIST) : ')
          C
0007      CALL TTINSI ('ENTER COMPLETE KEYWORD (1), OR FIRST CHARACTERS OF
          1 KEYWORD (2)',63,ICOM,ITT)
0008      GOTO (110,120) ICOM
0009      110  WRITE(ITT,2000)
0010      RETURN
0011      120  WRITE(ITT,2001)
0012      RETURN
0013      END
```

```

0001      SUBROUTINE ULKEY
          C
          C      UPDATE/CREATE LIST OF ALL KEYWORDS
0002      PARAMETER NMAX=250
0003      LOGICAL*1 ID,KEYWOR,DAT,ALLKEY
0004      COMMON/UNIT/I01,I02,I03,ITT,IOW
0005      COMMON/IDREC/ID(20),NEND,NKEY,KEYWOR(12,10),NTEX
0006      COMMON/KEYS/DAT(10),NALL,ALLKEY(12,250),NREP(250)
0007      1000  FORMAT(I4,12A1)
0008      1001  FORMAT(10A1)
          C
0009      DO 100 I=1,NMAX
0010      100   NREP(I)=0
0011      OPEN (UNIT=I02,TYPE='SCRATCH')
0012      NALL=0
0013      REWIND I01
0014      REWIND I03
0015      460   CALL READID
          C
0016      IF (NEND.EQ.1) GOTO 500
          C----- TAKE KEYWORDS WHICH ARE NOT ALREADY IN 'ALLKEY' -----
0017      DO 400 I=1,NKEY
0018      IF (NALL.EQ.0) GOTO 200
0019      IS=0
0020      DO 410 J=1,NALL
0021      IF (IEQ(KEYWOR(1,I),ALLKEY(1,J),12).EQ.0) GOTO 410
0022      IS=1
0023      NREP(J)=NREP(J)+1
0024      410   CONTINUE
0025      IF (IS.EQ.1) GOTO 400
0026      200   NALL=NALL+1
0027      IF (NALL.GT.NMAX) GOTO 9200
0028      NREP(NALL)=1
0029      CALL MOVE (KEYWOR(1,I),ALLKEY(1,NALL),12)
0030      400   CONTINUE
0031      CALL REATEX
          C
0032      GOTO 460
          C----- SORT -----
0033      500   DO 420 I=1,NALL
0034      420   WRITE(I03,1000) NREP(I),(ALLKEY(K,I),K=1,12)
0035      REWIND I03
0036      CALL SORTK (I03,I02,ITT,16,5,16)
          C
0037      REWIND I02
0038      REWIND I03
0039      WRITE(I03,1001) DAT
0040      DO 430 I=1,NALL
0041      READ (I02,1000,END=9100) NREP(I),(ALLKEY(K,I),K=1,12)
0042      430   WRITE(I03,1000) NREP(I),(ALLKEY(K,I),K=1,12)
0043      CLOSE(UNIT=I02)
0044      RETURN
          C
0045      ENTRY RLKEY
          C
          C      READ LIST OF ALL KEYWORDS
  
```

```
0046      REWIND IO3
0047      READ (IO3,1001,END=9100,ERR=9000) DAT
0048      NALL=0
0049      542  NALL=NALL+1
0050      READ (IO3,1000,END=540,ERR=9000) NREP(NALL),(ALLKEY(I,NALL),I=1,12)
0051      GOTO 542
0052      546  NALL=NALL-1
0053      RETURN
C
0054      ENTRY DCKEY
C      -----
C      SORT LIST OF ALL KEYWORDS BY NB OF OCCURENCES
0055      OPEN (UNIT=IO2,TYPE='SCRATCH')
0056      REWIND IO3
0057      READ (IO3,1001) DAT
0058      CALL SORTR (IO3,IO2,ITT,16,1,4)
C      -----
0059      REWIND IO2
0060      DO 900 K=1,NALL
0061      L=NALL-K+1
0062      900  READ (IO2,1000,END=9100,ERR=9000) NREP(L),(ALLKEY(I,L),I=1,12)
0063      CLOSE(UNIT=IO2)
0064      RETURN
C
0065      9000  STOP ' *** ERROR IN KEYWORD FILE. ***'
0066      9100  STOP ' *** END OF KEYWORD FILE NOT EXPECTED. ***'
0067      9200  STOP ' *** NO OF KEYWORDS TOO BIG. ***'
0068      END
```

```

0001      SUBROUTINE INDSEV
          C -----
          C INDEX BY KEYWORD, ONE SEARCH WITH SEVERAL KEYWORDS
0002      LOGICAL*1 FILEN1,FILEN3,FILEN4
0003      LOGICAL*1 ID,KEYWOR,DAT,DAT1,ALLKEY,KEY,TAM
0004      COMMON/UNIT/IO1,IO2,IO3,ITT,IOW,FILEN1(20),FILEN3(20),FILEN4(20)
0005      COMMON/IDREC/ID(20),NEND,NKEY,KEYWOR(12,10),NTEX
0006      COMMON/PRINTS/NLINE,NPAGE,JO,DAT(10),NID,IPL,IKEY,IOPT,ICOM,ICAS,
          INCOP
0007      COMMON/KEYS/DAT1(10),NALL,ALLKEY(12,250),NREP(250)
0008      COMMON/BDON/NCHAR(50),KEY(12,50),TAM(12)
0009      2000 FORMAT(' ITEMS ARE PRINTED AS FOLLOWS :')
0010      2001 FORMAT(T15,I4,'- ',20A1)
0011      2200 FORMAT(' JOB NO.',I3,T20,'INDEXED ID LIST',T67,10A1/
          11X,10(1H+),T20,15(1H+)/T20,'INDEX BY KEYWORD'////)
0012      2201 FORMAT(' JOB NO.',I3,T20,'INDEXED ITEM LIST',T67,10A1/
          21X,10(1H+),T20,17(1H+)/T20,'INDEX BY KEYWORD'////)
0013      2202 FORMAT(' LIST OF SELECTED KEYWORDS :')
0014      2203 FORMAT(' LIST OF SELECTED BEGINNINGS OF KEYWORDS :')
0015      2204 FORMAT(//)
0016      2205 FORMAT(' ID LIST :')
0017      2206 FORMAT(//1X,I4,' ITEMS HOLD THE',I3,' SELECTED KEYWORDS'/1X,
          740(1H+))
0018      2207 FORMAT(//1X,I4,' ITEMS HOLD THE',I3,' SELECTED BEGINNINGS OF',
          8' KEYWORDS'/1X,54(1H+))

          C
0019      CALL READS1
          C -----
0020      CALL ENTKEY (KEY,12,10,NK,NCHAR,1,ALLKEY,12,NALL,ITT)
          C -----
0021      CALL READS0
          C -----
0022      DO 720 K=1,NCOP
0023      NPAGE=0
0024      CALL PAGES
          C -----
0025      IF (IOPT.EQ.1) WRITE(IOW,2200) JO,DAT
0026      IF (IOPT.EQ.2) WRITE(IOW,2201) JO,DAT
0027      IF (ICOM.EQ.1) WRITE(IOW,2202)
0028      IF (ICOM.EQ.2) WRITE(IOW,2203)
0029      NLINE=NLINE+8
0030      IF (K.EQ.1) WRITE(ITT,2000)
0031      DO 100 I=1,NK
0032      100 CALL WRITID (KEY(1,I),12,I,0,NREP)
          C -----
0033      WRITE(IOW,2204)
0034      NLINE=NLINE+2
0035      IF (IOPT.EQ.2) GOTO 610
0036      WRITE(IOW,2205)
0037      NLINE=NLINE+2
0038      610 REWIND IO1
0039      NID=0
0040      650 CALL READID
          C -----
0041      IF (NEND.EQ.1) GOTO 660
          C
  
```

```

0042      DO 670 J=1,NK
0043      NC=NCHAR(J)
0044      DO 680 J1=1,NKEY
0045      IF (IEQ(KEY(1,J),KEYWOR(1,J1),NC).EQ.1) GOTO 670
0046      680  CONTINUE
0047      CALL REATEX
          C -----
0048      GOTO 650
0049      670  CONTINUE
          C
0050      NID=NID+1
0051      IF (K.EQ.1) WRITE(ITT,2001) NID,ID
0052      IF (IOPT.EQ.2) GOTO 700
0053      CALL WRITID (ID,20,NID,0,NREP)
          C -----
0054      CALL REATEX
          C -----
0055      GOTO 650
0056      700  CALL WRITEX
          C -----
0057      GOTO 650
          C
0058      660  IF ((ICAS.EQ.1).OR.(NLINE.GE.56)) CALL PAGES
          C -----
0059      IF (ICOM.EQ.1) WRITE(IOW,2206) NID,NK
0060      IF (ICOM.EQ.2) WRITE(IOW,2207) NID,NK
0061      720  CONTINUE
0062      RETURN
0063      END
  
```



```

0001      SUBROUTINE INDONE
          C -----
          C INDEX BY KEYWORD, SEVERAL SEARCHES WITH ONE KEYWORD
0002      LOGICAL*1 FILEN1,FILEN3,FILEN4
0003      LOGICAL*1 ID,KEYWOR,DAT1,DAT2,ALLKEY,KEY,TAM
0004      COMMON/UNIT/IO1,IO2,IO3,ITT,IOW,FILEN1(20),FILEN3(20),FILEN4(20)
0005      COMMON/IDREC/ID(20),NEND,NKEY,KEYWOR(12,10),NTEX
0006      COMMON/PRINTS/NLINE,NPAGE,JO,DAT(10),NID,IP1,IKEY,IOPT,ICOM,ICAS,
          INCOP
0007      COMMON/KEYS/DAT1(10),NALL,ALLKEY(12,250),NREP(250)
0008      COMMON/BIDON/NCHAR(50),KEY(12,50),TAM(12)
0009      2000 FORMAT('/ ITEMS ARE PRINTED AS FOLLOWS :')
0010      2001 FORMAT(I4,' ') ,20A1)
0011      2002 FORMAT(T15,I4,'- ',20A1)
0012      2200 FORMAT(' JOB NO. ',I3,T20,'INDEXED ID LIST',T67,10A1/
          91X,10(1H*),T20,15(1H*))
0013      2201 FORMAT(' JOB NO. ',I3,T20,'INDEXED ITEM LIST',T67,10A1/
          11X,10(1H*),T20,17(1H*))
0014      2202 FORMAT(' KEYWORD : ',<NC>A1/1X,<10+NC>(1H+)/)
0015      2203 FORMAT(' KEYWORD BEGINNING WITH : ',<NC>A1/1X,<25+NC>(1H+)/)
0016      2204 FORMAT(/1X,I4,' ITEMS HOLD THE KEYWORD : ',<NC>A1/1X,
          4 <30+NC>(1H*)////)
0017      2205 FORMAT(/1X,I4,' ITEMS HOLD A KEYWORD BEGINNING WITH : ',<NC>A1/
          6 1X,<43+NC>(1H*)////)
0018      2206 FORMAT(T16,'COMPLETE INDEX BY KEYWORD'////)
0019      2207 FORMAT(T20,'INDEX BY KEYWORD'////)
          C
0020      CALL TTINSI ('WANT COMPLETE INDEX (1), OR ENTER KEYWORDS (2)',46,
          1 IEN,ITT)
0021      GOTO (110,120) IEN
0022      110      ICOM=1
0023      NK=NALL
0024      GOTO 300
0025      120      CALL HEADS1
          C -----
0026      CALL ENTKEY (KEY,12,50,NK,NCHAR,1,ALLKEY,12,NALL,ITT)
          C -----
0027      300      CALL READS0
          C -----
0028      1800     DO 1720 K=1,NCOP
0029      NPAGE=0
0030      CALL PAGES
          C -----
0031      IF (IOPT.EQ.1) WRITE(IOW,2200) JO,DAT
0032      IF (IOPT.EQ.2) WRITE(IOW,2201) JO,DAT
0033      IF (IEN.EQ.1) WRITE(IOW,2206)
0034      IF (IEN.EQ.2) WRITE(IOW,2207)
0035      NLINE=NLINE+6
0036      IF ((K.EQ.1).AND.(IEN.EQ.2)) WRITE(ITT,2000)
0037      DO 1670 J=1,NK
0038      CALL IND11 (IEN,NC,J)
          C -----
0039      IF ((ICAS.EQ.1).OR.(NLINE.GE.53)) CALL PAGES
          C -----
0040      1510     IF (ICOM.EQ.1) WRITE(IOW,2202) (TAM(I),I=1,NC)
0041      IF (ICOM.EQ.2) WRITE(IOW,2203) (TAM(I),I=1,NC)
  
```

```

0042      NLINE=NLINE+3
0043      IF (K.EQ.1) WRITE(ITT,2001) J,(TAM(I),I=1,NC)
0044      REWIND IO1
0045      NID=0
0046      1650  CALL READID
           C      -----
0047      IF (NEND.EQ.1) GOTO 1660
           C
0048      DO 1680 J1=1,NKEY
0049      IF (IEQ(TAM,KEYWOR(1,J1),NC).EQ.0) GOTO 1680
0050      NID=NID+1
0051      IF ((K.EQ.1).AND.(IEN.EQ.2)) WRITE(ITT,2002) NID,ID
0052      IF (IOPT.EQ.2) GOTO 1700
0053      CALL WRITID (ID,20,NID,0,NREP)
           C      -----
0054      CALL REATEX
           C      -----
0055      GOTO 1650
0056      1700  CALL WRITEX
           C      -----
0057      GOTO 1650
0058      1680  CONTINUE
           C
0059      CALL REATEX
           C      -----
0060      GOTO 1650
           C
0061      1660  IF ((ICAS.EQ.1).OR.(NLINE.GE.52)) CALL PAGES
           C      -----
0062      IF (ICOM.EQ.1) WRITE(IOW,2204) NID,(TAM(I),I=1,NC)
0063      IF (ICOM.EQ.2) WRITE(IOW,2205) NID,(TAM(I),I=1,NC)
0064      NLINE=NLINE+8
0065      1670  CONTINUE
0066      1720  CONTINUE
0067      RETURN
0068      END
  
```

```
0001          SUBROUTINE IND11 (IEN,NC,J)
              C -----
              C COMPLETE INDEX OR A FEW KEYWORDS
              C
0002          LOGICAL*1 DAT1,ALLKEY,KEY,TAM
0003          COMMON/KEYS/DAT1(10),NALL,ALLKEY(12,250),NREP(250)
0004          COMMON/BIDON/NCHAR(50),KEY(12,50),TAM(12)
              C
0005          GOTO (100,200) IEN
0006          100  NC=12
0007              CALL MOVE (ALLKEY(1,J),TAM,12)
0008              RETURN
0009          200  NC=NCHAR(J)
0010              CALL MOVE (KEY(1,J),TAM,NC)
0011              RETURN
0012          END
```