

COST NO. G-1

UNITED STATES DEPARTMENT OF THE INTERIOR
GEOLOGICAL SURVEY

U.S.G.S LINE 77-1

OPEN-FILE REPORT 80-268
PLATE 2

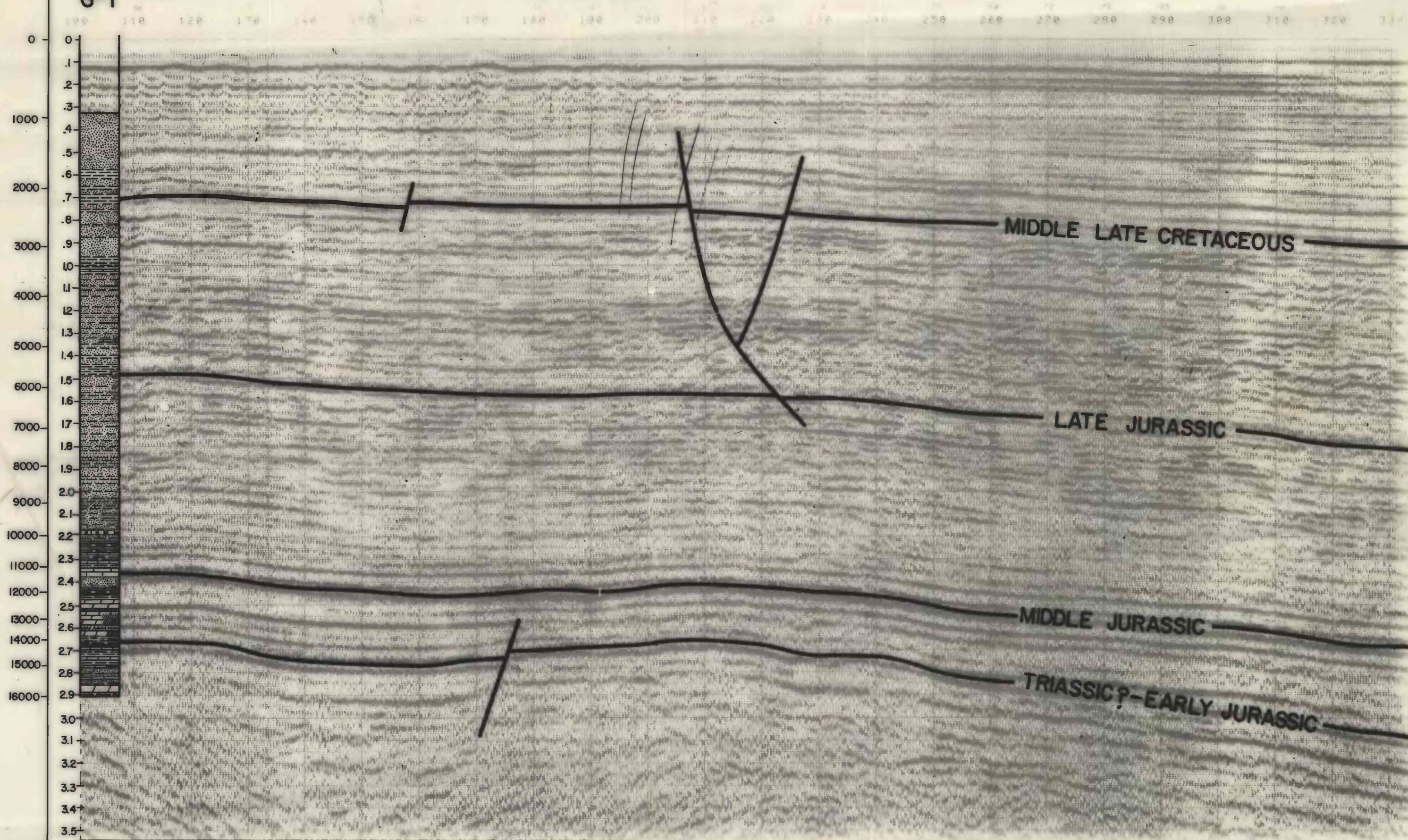


PLATE 2. PORTION OF U.S.G.S. SEISMIC LINE 77-1 SHOWING RELATIONSHIP OF COST NO. G-1 MAJOR LITHOLOGIC UNITS TO SEISMIC REFLECTORS