

Figure 6.

Well: Capps Field Hole 1 C-79 Date: 9-8-79

Location: T 14 N, R 14 W, Sec. 23

Log Type: Caliper - 3 arm

Operator: L. L. Dearborn (U.S.G.S.)

Logging and Well Information

Logging Speed: approximately 10 ft./min. up

Log. Vert. Scale: 10 ft./inch

Reference Point: top of drill stem 4.75 ft. above land surface

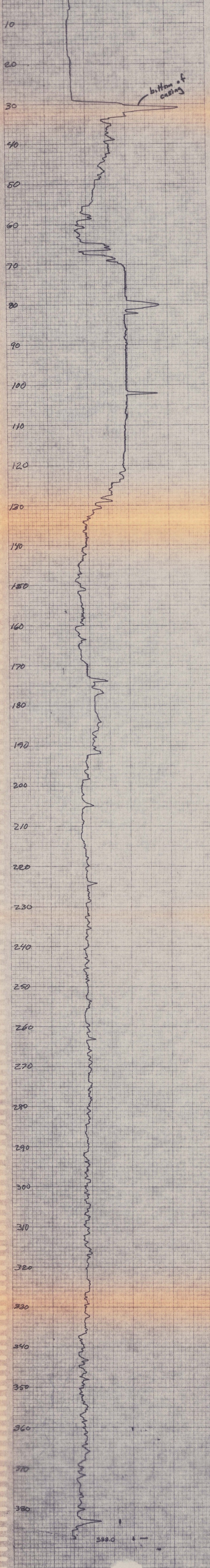
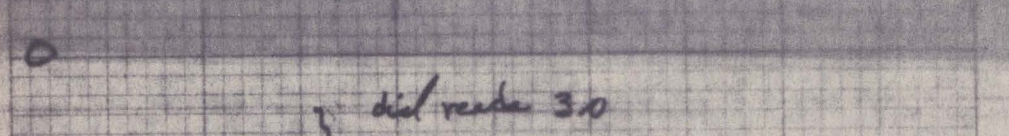
Log Depth: 388.0 ft.

Well T.D.: 390.0 ft.

Casing and Dia.: steel surface casing 4.5" O.D. to 30 ft.

Remarks: hole diameter calibration

WIDTH IN INCHES



HEWLETT-PACKARD

9270-1012

HEWLETT-PACKARD

9270-1012

HEWLETT-PACKARD

9270-1012