

(200)
R290
no. 80-
393

Figure 8.

Well: Capps Field Hole 1 C-79 Date: 9-7-79

Location: 1 14 N, R 14 W, Sec. 23

Log Type: gamma gamma density

Operator: L. L. Dearborn (U.S.G.S.)

Logging and Well Information

Detector type: scintillation/sodium iodide crystal

Source to Detector Spacing: 17" spacer

Logging Speed: 8 ft./min. up

Log. Vert. Scale: 10 ft./inch

Reference Point: top of drill stem 4.75 ft. above land surface

Log Depth: 389.0 ft.

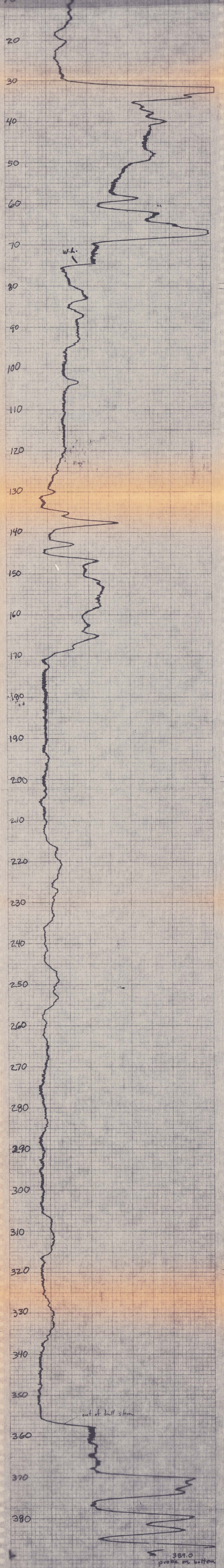
Well T.D.: 390.0 ft.

Casing and Dia.: steel surface casing 4.5" O.D. to 30 ft.

Remarks: logged through drill stem 3.5" O.D., 3 1/16 I.D. to 356.0 ft.

COUNTS PER SECOND

0 500 1000 1500 2000 2500 3000 3500 4000 4500 5000



HEWLETT-PACKARD
9270-1012
HEWLETT-PACKARD
9270-1012
HEWLETT-PACKARD
9270-1012
HEWLETT-PACKARD
9270-1012
HEWLETT-PACKARD
9270-1012