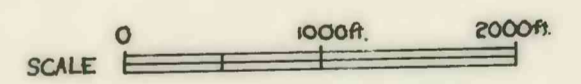


Geologic map of the Bee Creek Prospect

- Go^a Alluvium
- Q^r Talus
- T^d Diorite
- T^{cd} Quartz diorite
- T^h Hornfels
- Q^m Silica zone
- Jⁿ Naknek Fm.
- J^{sh} Siliceous hornfels
- J^{qc} Quartzite-conglomerate
- J^{cs} Calcareous siliceous sandstone
- SS Shear zone
- F Fault
- h Bedding strike and dip
- Outcrop
- - - Contact, formation
- Drill hole
- Sulfide limit (1%)
- Dating sample locality

BEAR CREEK MINING COMPANY
 Spokane Office
 ALASKA SEARCH-CHIGNIK AREA
 BEE CREEK PROSPECT
 GEOLOGY



Data by: E.D.F. Dwn: L.L.D. Date: Nov. 4, 1976

Redrafted from distorted Xerox copy of
 Bear Creek Mining Company report to the
 Bristol Bay Native Corp., Nov. 4, 1976

This report is preliminary and has
 not been edited or reviewed for
 conformity with Geological Survey
 standards and nomenclature.