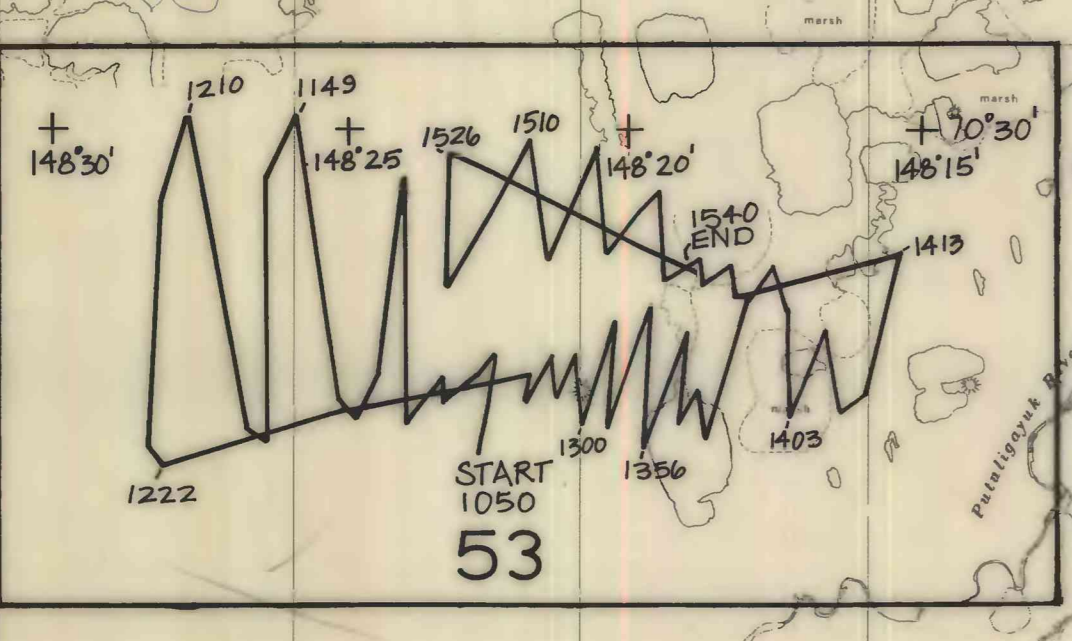
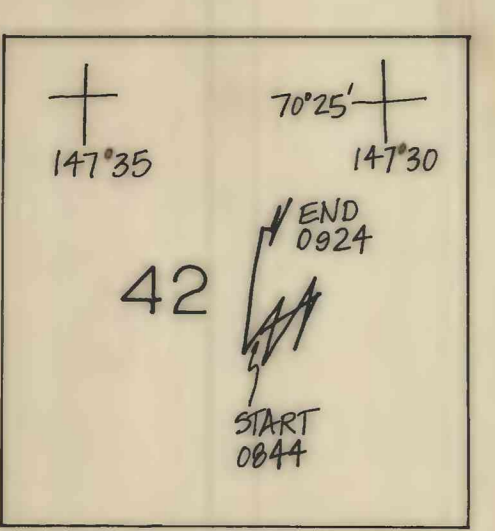
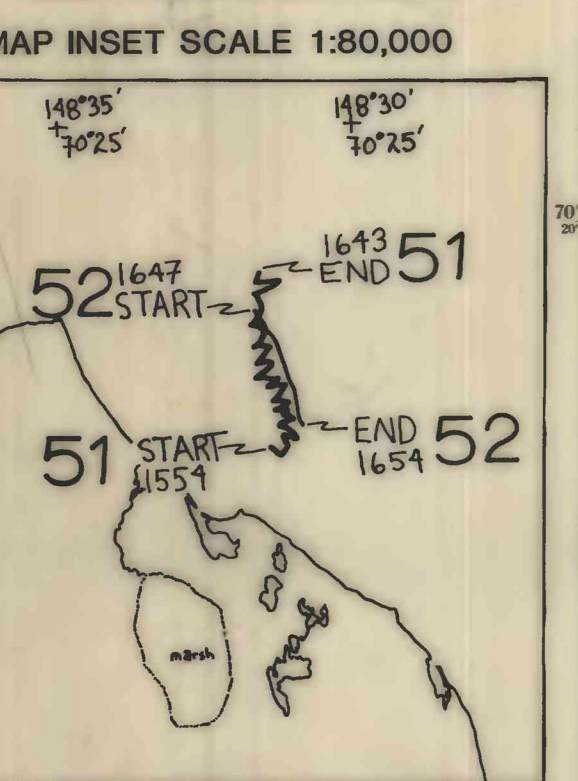
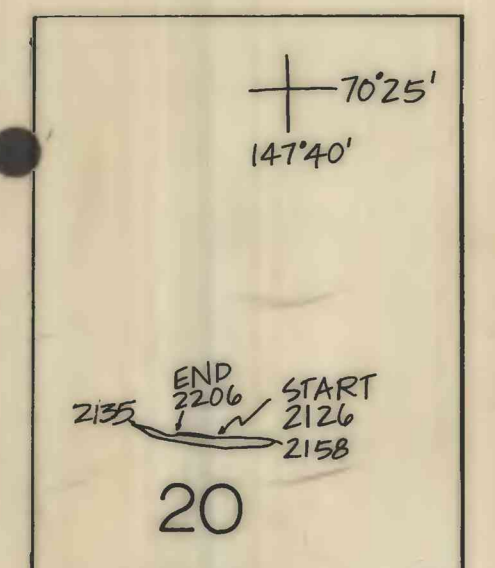
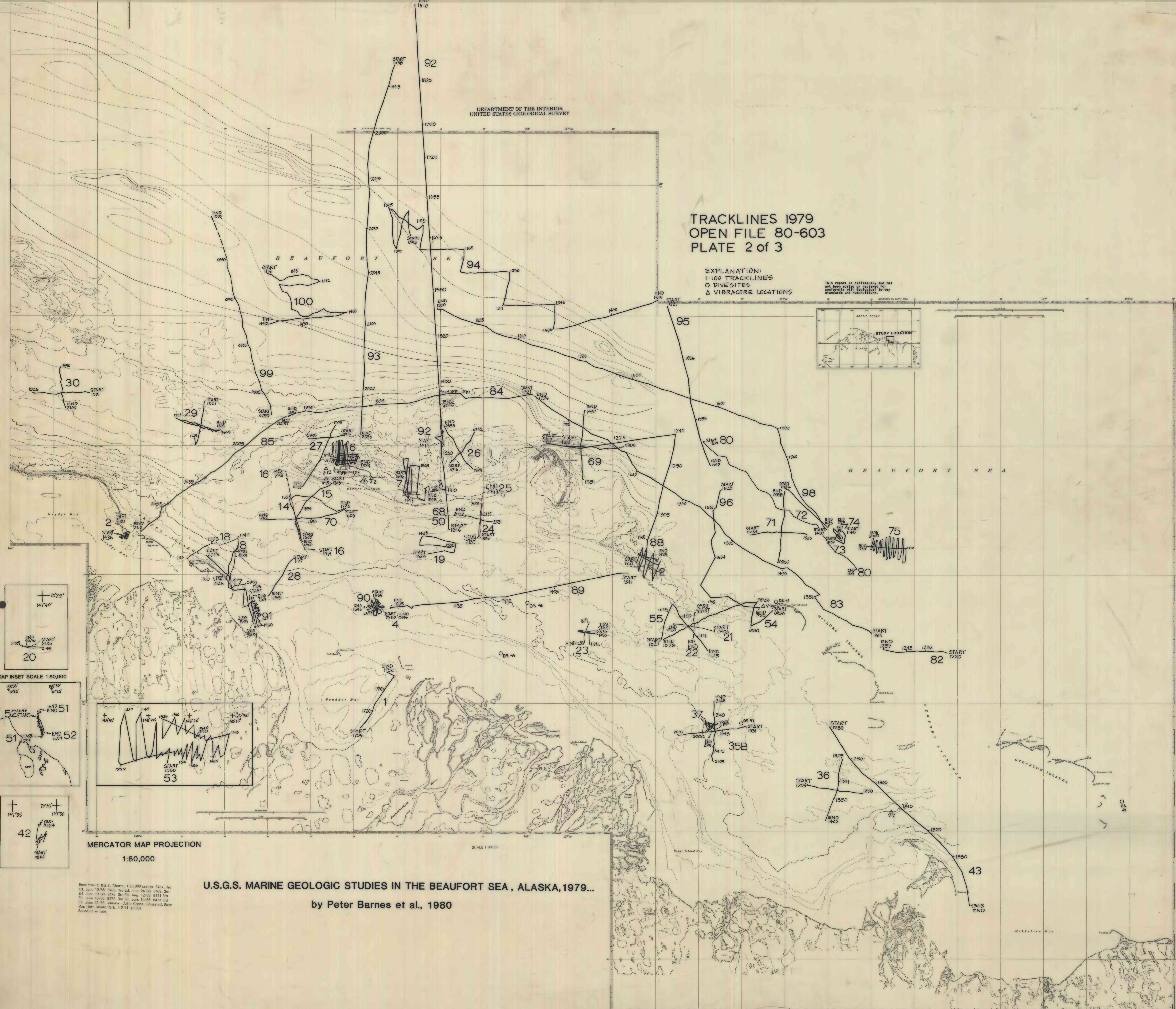
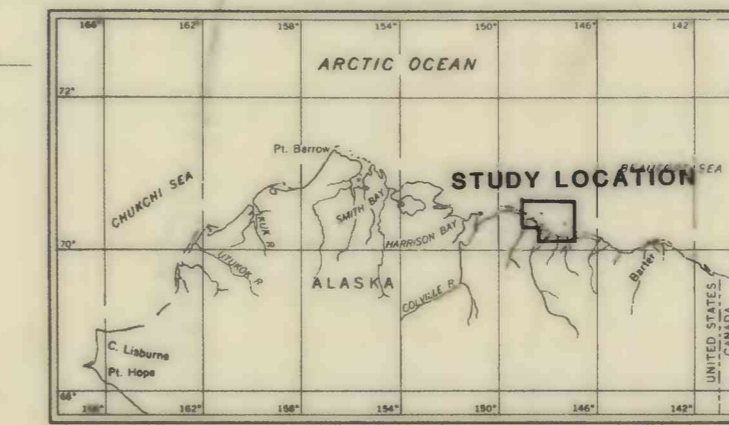


DEPARTMENT OF THE INTERIOR
UNITED STATES GEOLOGICAL SURVEY

TRACKLINES 1979 OPEN FILE 80-603 PLATE 2 of 3

EXPLANATION:
1-100 TRACKLINES
O DIVESITES
Δ VIBRACORE LOCATIONS

This report is preliminary and has not been edited or reviewed for conformity with Geological Survey standards and nomenclature.



MERCATOR MAP PROJECTION
1:80,000

SCALE 1:80,000

U.S.G.S. MARINE GEOLOGIC STUDIES IN THE BEAUFORT SEA, ALASKA, 1979...
by Peter Barnes et al., 1980

Base from C & G.S. Charts, 1:50,000 series: 8467, 3rd Ed. June 10/68; 8468, 3rd Ed. June 24/68; 8469, 3rd Ed. June 10/68; 8470, 3rd Ed. Aug. 12/68; 8471, 3rd Ed. June 10/68; 8472, 3rd Ed. June 10/68; 8473, 3rd Ed. June 24/68; Alaska - Arctic Coast. Compiled, Base Map Unit, Menlo Park, 4-2-71 (3-85).
Sounding in feet.