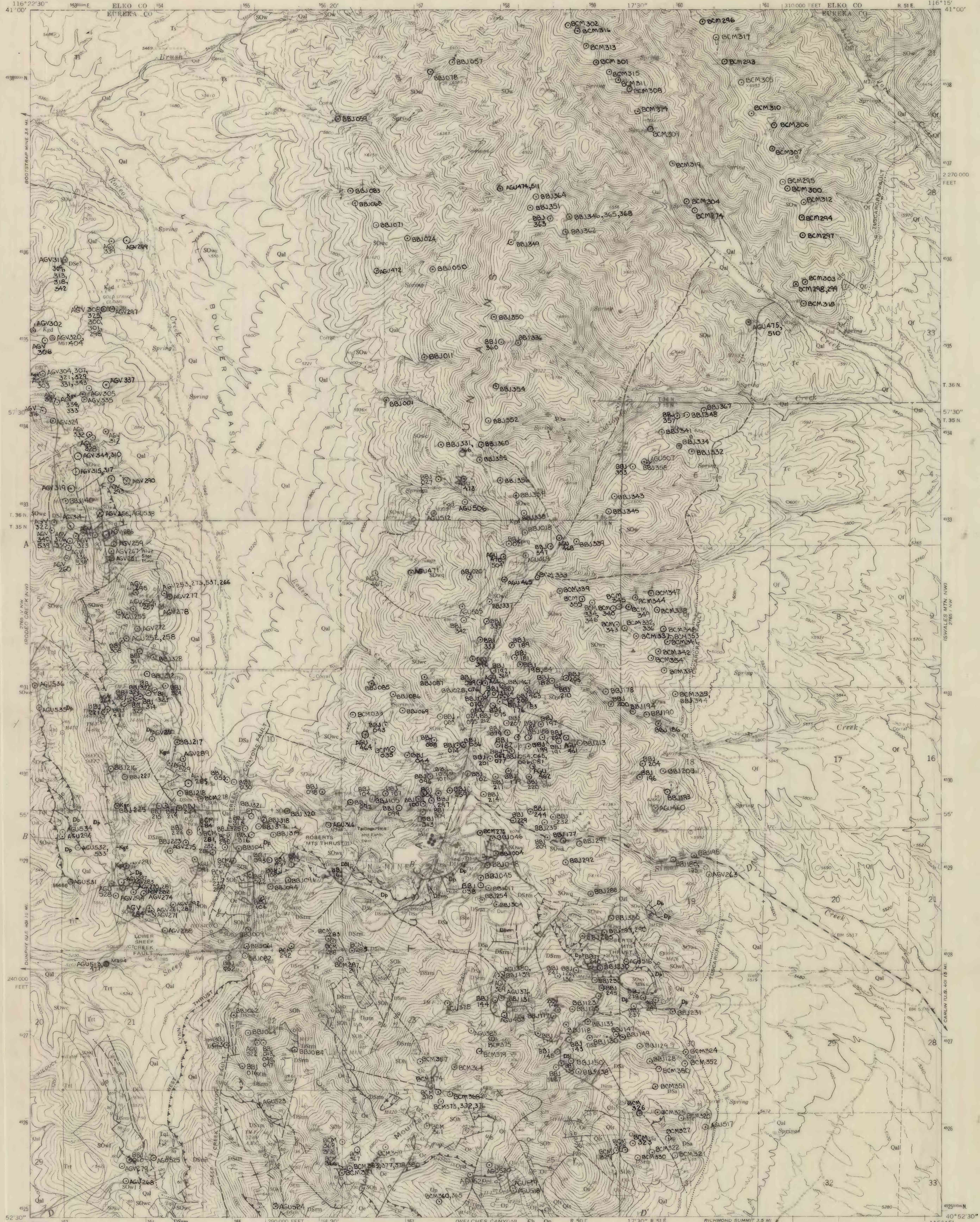


UNITED STATES DEPARTMENT OF THE INTERIOR
GEOLOGICAL SURVEY

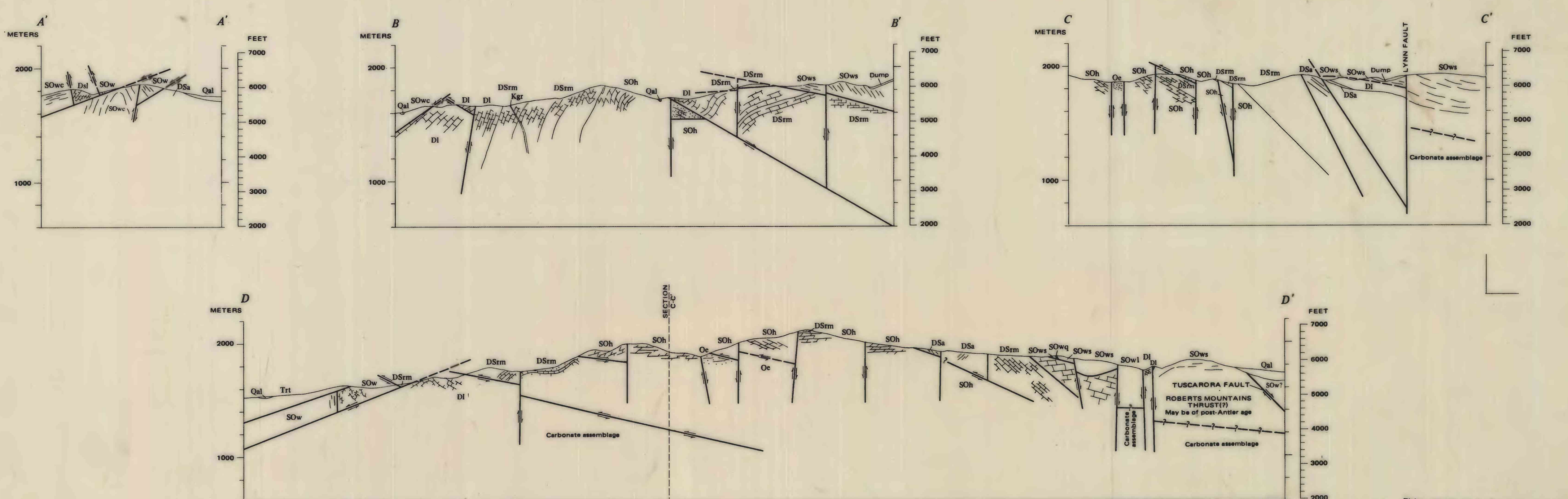


EXPLANATION		
Qal	Alluvium	QUATERNARY
Qls	Landslide deposits	
Qf	Fanglomerate	
Ts	Siltstone	TERTIARY
Tc	Carlin Formation of Renner (1960)	
Ttt	Rhyolitic welded tuff	
Tib	Intrusive breccia ¹	
Tql	Quartz latite	TERTIARY OR CRETACEOUS
Tpd	Granodiorite	
a, q	Andesite and quartz veins	TERTIARY OR OLDER
TKrd	Rhyodacite ¹	TERTIARY OR CRETACEOUS
Kqm	Quartz monzonite	
Kgr	Granite ²	MESOZOIC OR PALEOZOIC
b	Basalt ¹	
SILICEOUS (WESTERN) ASSEMBLAGE		MESOZOIC OR PALEOZOIC
Unamined limestone with chert clasts and thin chert and shale horizons		
TRANSITIONAL ASSEMBLAGE		DEVONIAN
Dp		
CARBONATE (EASTERN) ASSEMBLAGE		DEVONIAN AND SILURIAN
DSi, Dsa		
Undifferentiated limestone		DEVONIAN AND SILURIAN
DSi limestone Dsa, hydrothermally altered, chiefly silicified limestone		
DSm		SILURIAN AND ORDOVICIAN
Roberts Mountains Formation		
DSO		SILURIAN AND ORDOVICIAN
Brecciated and altered carbonate rock		
SOh, SOs		SILURIAN AND ORDOVICIAN
Hanson Creek Formation SOh, dolomite SOs, limestone		
Oe		ORDOVICIAN
Eureka Quartzite		
Op, Opd		ORDOVICIAN
Pagonip Group Op, limestone Opd, dolomite		
Ch		CAMBRIAN
Hamburg Dolomite		

SWw	Chert and shale
SWw1	SWw, chert and shale, undifferentiated
SWw2	SWw, quartzite
SWw3	SWw, chert
SWw4	SWw, shale
SWw5	SWw, limestone

-----	Contact
.....	Approximately located. Dotted where concealed
--- ---	Fault, showing dip
.....	Dashed where approximately located; dotted where concealed; queried where uncertain. Arrows show direction of relative movement, U, upthrown side; D, downthrown side
--- ---	Thrust fault
.....	Dashed where approximately located; dotted where concealed; queried where uncertain. Sawtooth on upper plate
--- ---	Trace of antiformal crest, showing plunge
--- ---	Trace of synformal hinge zone
--- ---	Minor anticline, showing plunge
--- ---	Minor syncline, showing plunge
--- ---	Inclined Overturned Vertical Horizontal
--- ---	Strike and dip of beds
--- ---	Inclined Horizontal
--- ---	Trend and plunge of minor folds
--- ---	May be combined with other symbols
○	Fossil locality
○	Fossil locality approximately located from Roberts and others (1967) or Roen (1961)
○	Fossil locality where bedding attitude was measured
○	Location of analyzed sample
○	Location of radiometrically dated sample
---	Line of measured stratigraphic section
○	Mine dump
○	Geochemical sample locality

¹Unit not on map
²Kgr should be Kgd
"Granite" should be "Granodiorite"



GEOLOGIC MAP OF THE RODEO CREEK NE QUADRANGLE, NEVADA

Interior - Geological Survey, Reston, Va., - 1979 - G79132

This report is preliminary and has not been edited or reviewed for conformity with Geological Survey standards and nomenclature.