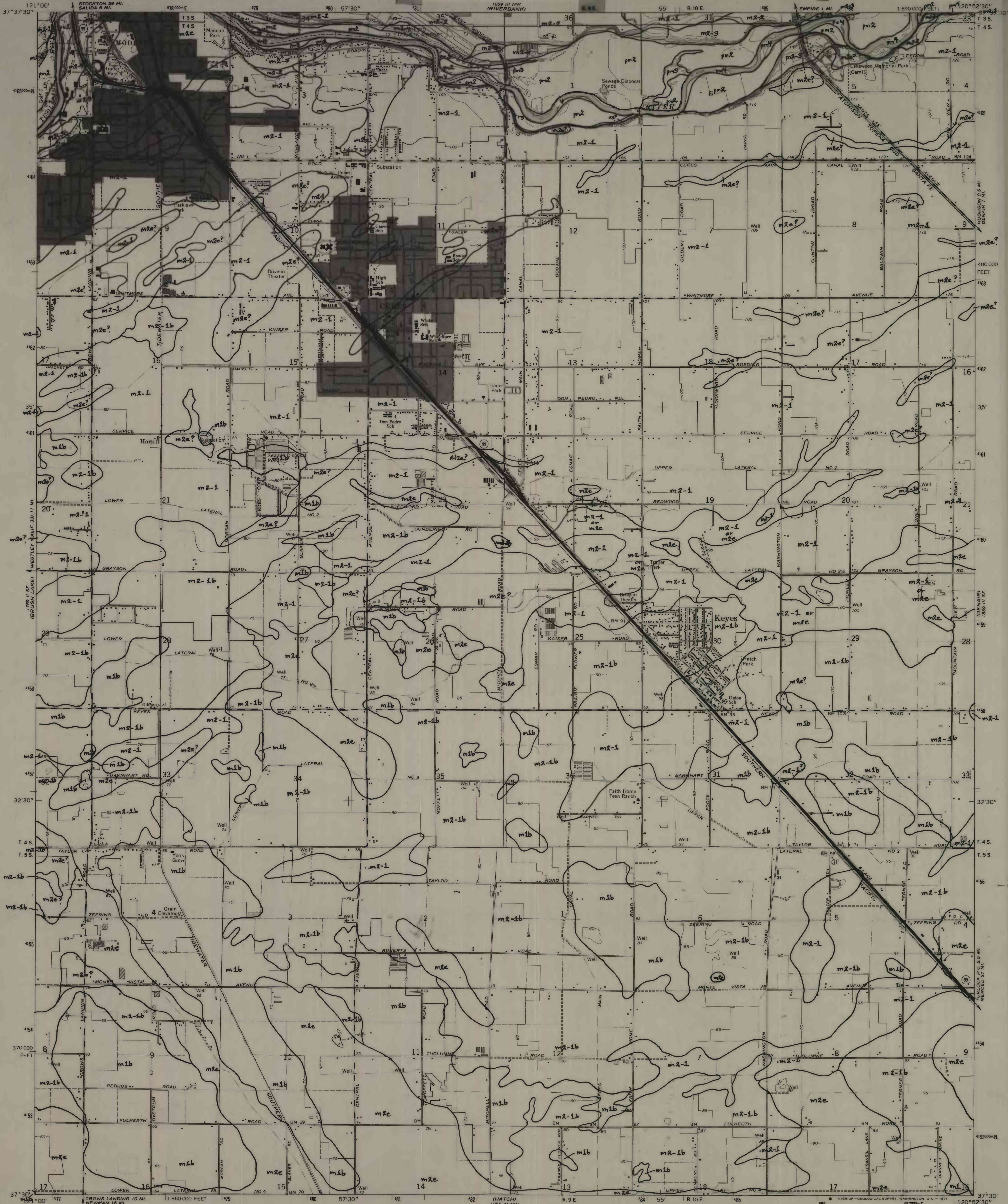
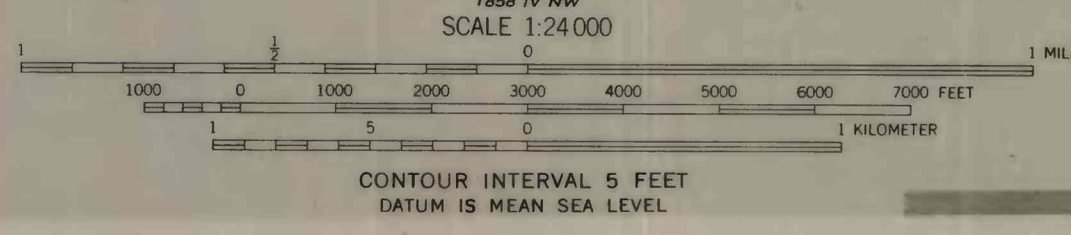
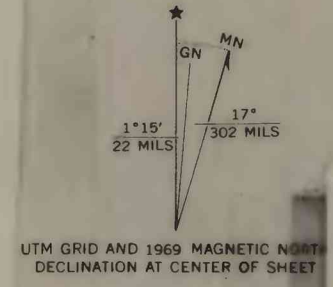


UNITED STATES DEPARTMENT OF THE INTERIOR GEOLOGICAL SURVEY



Geology by Denis E. Marchand 1977-1979



ROAD CLASSIFICATION table with categories: Primary highway, Secondary highway, Light-duty road, Unimproved road, and State Route.

PRELIMINARY GEOLOGIC MAPS SHOWING QUATERNARY DEPOSITS OF THE CERES, DENAIR, AND MONTPELIER 7 1/2' QUADRANGLES, STANISLAUS AND MERCED COUNTIES, CALIFORNIA

This map is preliminary and has not been edited or reviewed for conformity with U.S. Geological Survey Standards and nomenclature

CERES, CALIF.