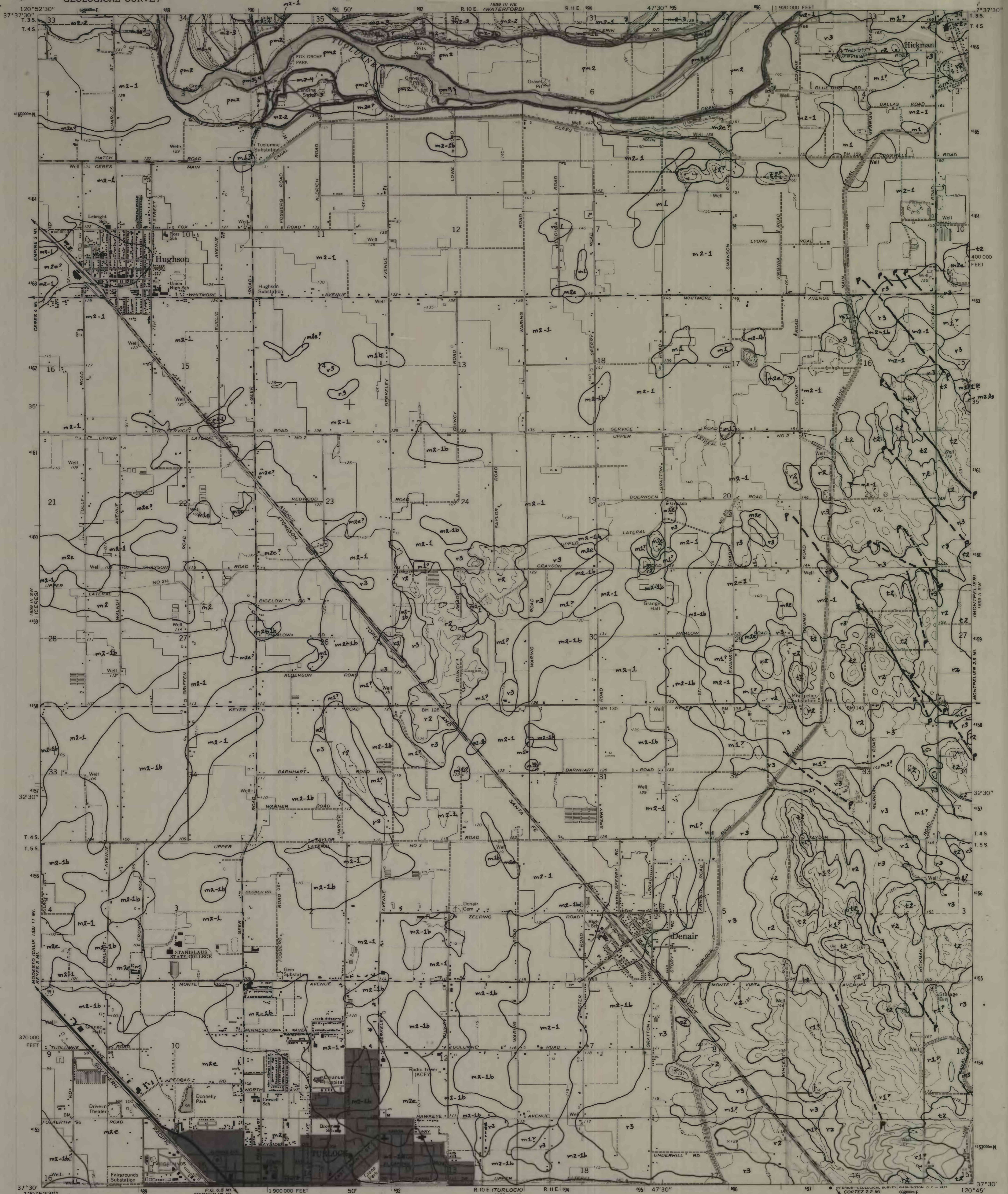
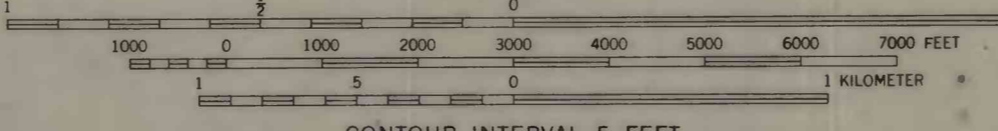


UNITED STATES DEPARTMENT OF THE INTERIOR GEOLOGICAL SURVEY



Mapped, edited, and published by the Geological Survey

SCALE 1:24,000



CONTOUR INTERVAL 5 FEET DATUM IS MEAN SEA LEVEL

Geology by Denis E. Marchand

1977-1979

UTM GRID AND 1969 MAGNETIC NORTH DECLINATION AT CENTER OF SHEET

PRELIMINARY GEOLOGIC MAPS SHOWING QUATERNARY DEPOSITS OF THE CERES, DENAIR, AND MONTEPIELIER 7 1/2' QUADRANGLES, STANISLAUS AND MERCED COUNTIES, CALIFORNIA

QUADRANGLE LOCATION

This map is preliminary and has not been edited or reviewed for conformity with U.S. Geological Survey Standards and nomenclature

ROAD CLASSIFICATION Primary highway, all weather, hard surface Secondary highway, all weather, hard surface Light-duty road, all weather, improved surface Unimproved road, fair or dry weather State Route

DENAIR, CALIF. SE/4 MODESTO EAST 15' QUADRANGLE