

Figure 9.--Gamma-gamma log of drill-hole KB-D2, No. 1

Hole location: 500 FSL, 450 FEL, sec. 27,
T. 16 N., R. 90 W., 6th P.M.,
Carbon County, WY

Detector type: scintillation

Time constant: 4 sec

Collar elevation: 7,680 ft

Source type: Cs-137

Date drilled: Oct. 22, 1977

Source size: 29.16 millicuries

Open-hole diameter: 4 3/4 in.

Source-to-detector spacing: 13 in.

Casing: none

Logging speed: 20 ft/min

Drilling fluids: air, 0-60 ft; air and water,
60-70 ft; air, 70-300 ft

Calibration: unknown, scale setting
2,500 cps above water level

Depth determined by driller: 300 ft

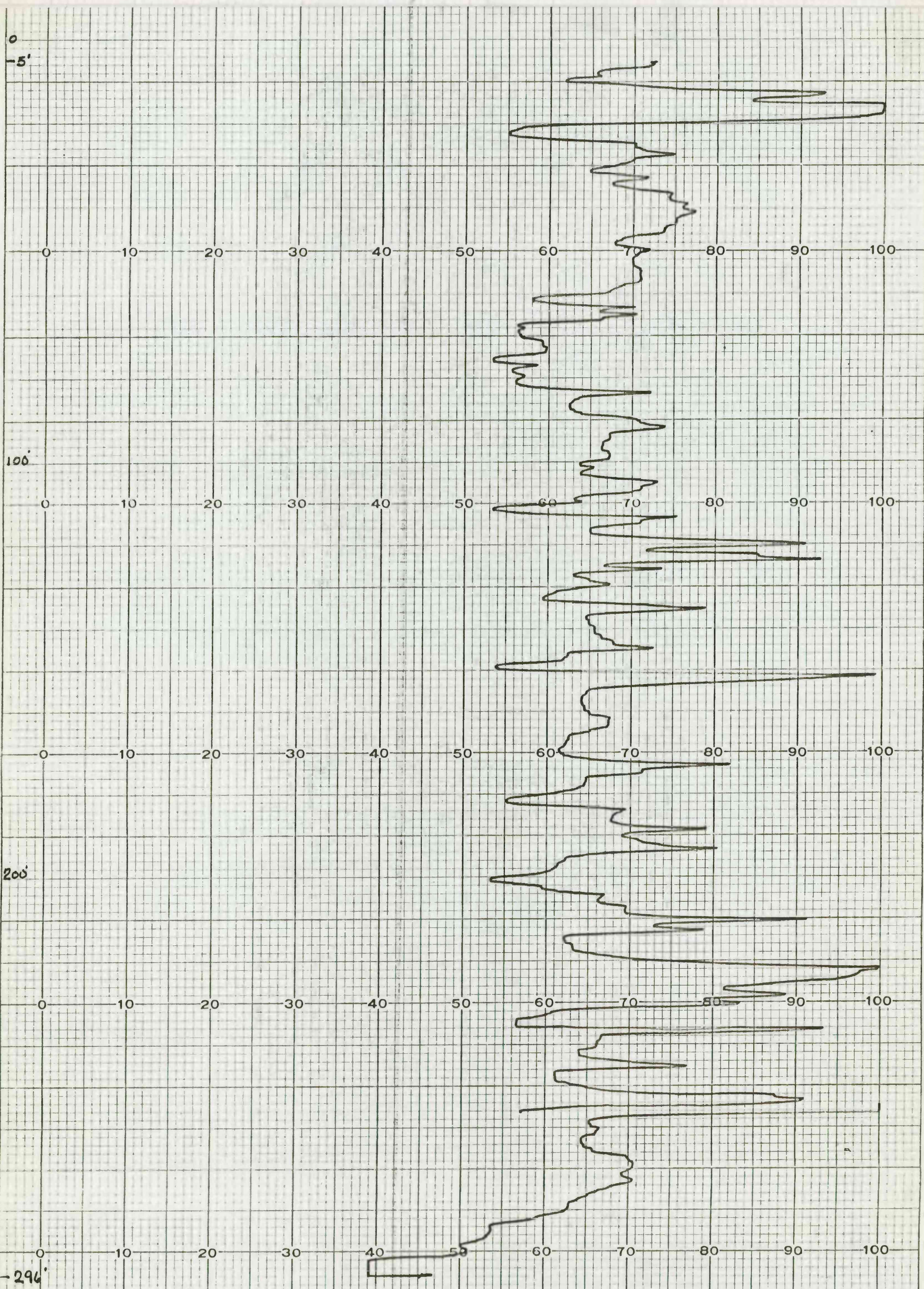
Logged by: J. Jones

Logged depth: 296 ft

Logger unit: Well Reconnaissance

Water level: 256 ft

Date logged: Oct. 22, 1977



HONEYWELL PH
CHART NO. 9283-NP
PRINTED IN U.S.A.
HONEYWELL, PHILADELPHIA, PA.
CHART NO. 9283-NP