

Figure 98.--Gamma-gamma log of drill-hole DM-D42, No. 1

Hole location: 1,800 FNL, 900 FEL, sec. 27,  
T. 16 N., R. 90 W., 6th P.M.,  
Carbon County, WY

Detector type: scintillation

Time constant: 4 sec

Collar elevation: 7,540 ft

Source type: Cs-137

Date drilled: Oct. 20-21, 1977

Source size: 29.16 millicuries

Open-hole diameter: 4 3/4 in.

Source-to-detector spacing: 13 in.

Casing: 5-in. steel, 0-5 ft

Logging speed: 20 ft/min

Drilling fluids: air, 0-40 ft; air and water,  
40-300 ft

Calibration: unknown; 5,000 cps  
above water level

Depth determined by driller: 300

Logged by: J. Jones

Logged depth: 301 ft

Logger unit: Well Reconnaissance

Water level: 264 ft

Date logged: Oct 21, 1977

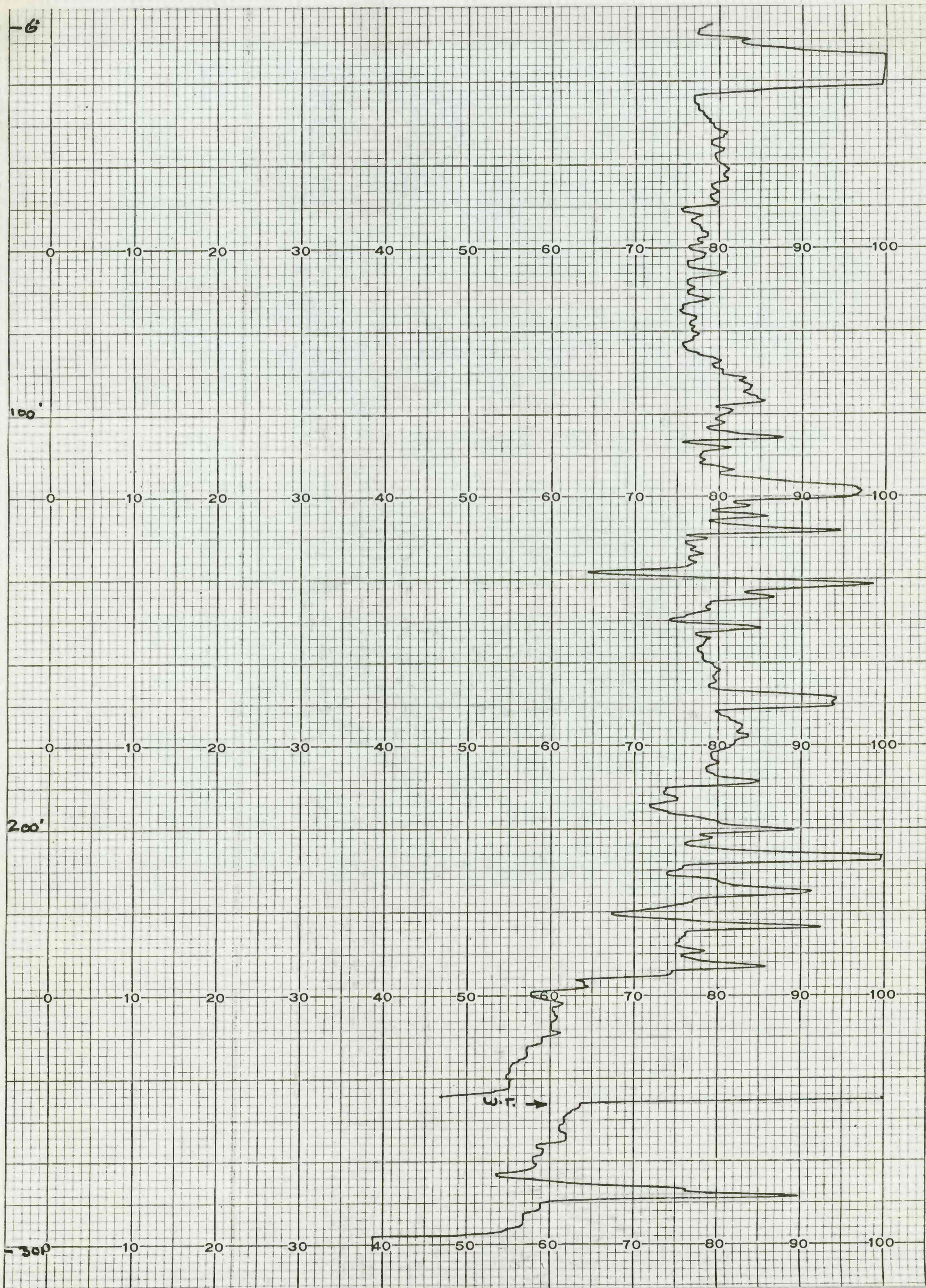


CHART NO. 9283-NR HONEYWELL, PHILADELPHIA, PA. PRINTED IN U.S.A. HONEYWELL