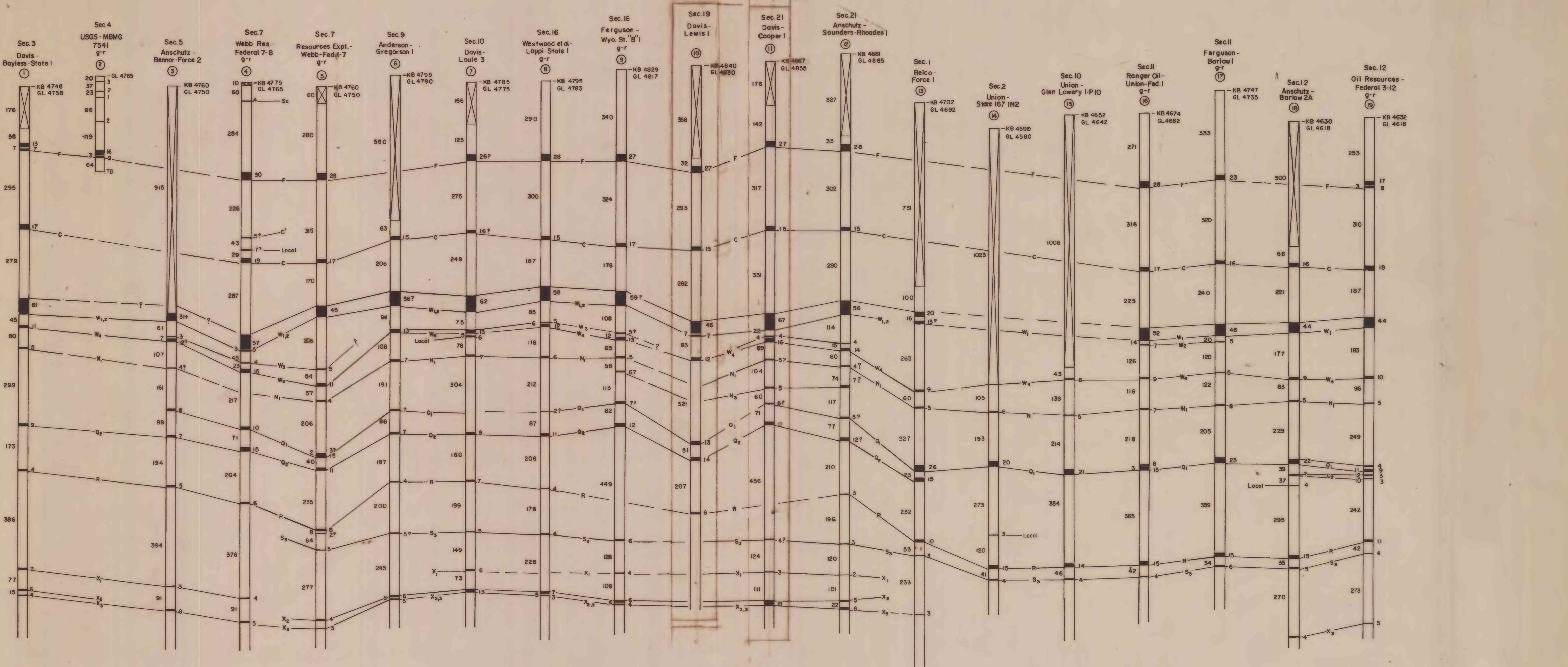


T.49N, R.73W

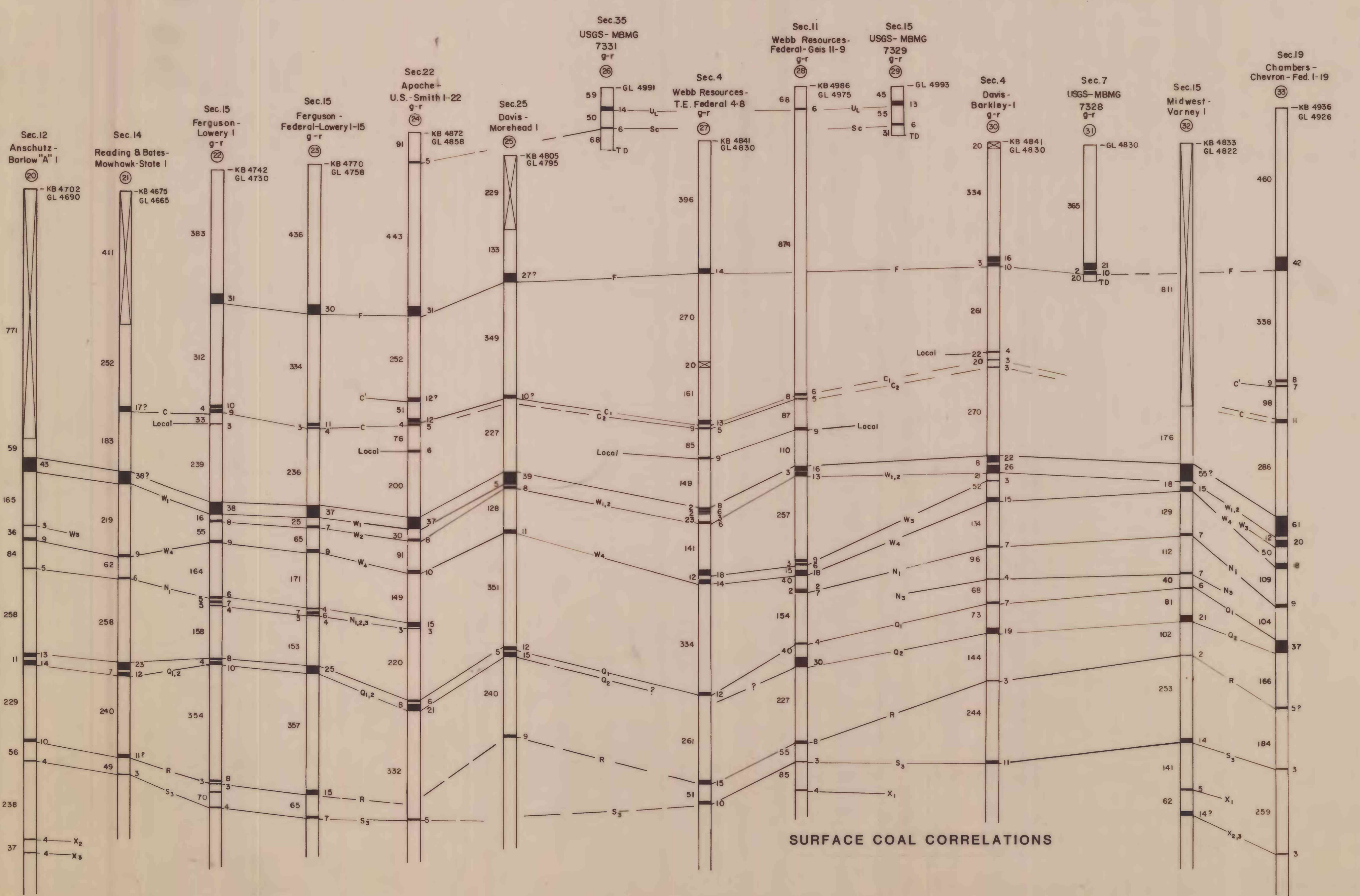
T.49 N, R.74 W.



T. 49 N, R.74 W.

T.48 N, R.74 W.

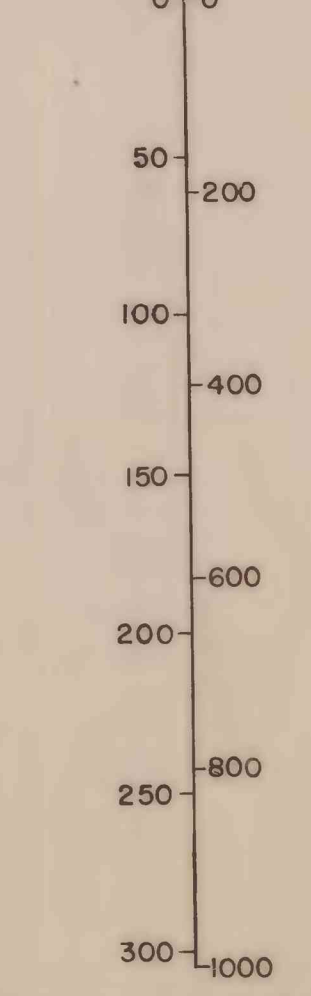
T.48 N, R.73 W.



SURFACE COAL CORRELATIONS

Sec. 19 - Location  
Davis - Operator  
Lewis I - Well name  
g-r - Data from gamma-ray log. Interpretations otherwise are electrical logs  
⑩ - Index number shown on map  
KB 4840 - Elevation of Kelly bushing or GL 4830 ground level estimated from topography\*  
— Cased, no record  
Interval  
27 - Thickness of coal  
No coal  
5? - Possible coal  
TD - Total depth  
All measurements in feet (to convert to meters multiply by 0.3048)  
\*Elevation given on geophysical logs may not agree with elevation estimated from map topography

METERS FEET



All measurements in feet (to convert to meters, multiply by 0.3048)

Coal beds with number subscripts indicate identified splits or related coals in zone; superscripts indicate coals at about the same stratigraphic horizon, but of uncertain correlation; lines indicate rapid changes in split thickness and coal stratigraphic horizon.  
Coal bed nomenclature for this report follows that used by Dubin and Barnett (1928) for coals above the Wyodak zone; below the Wyodak zone, modified from Grazis (1977).  
Coal bed nomenclature used by Grazis (1977).  
Coal bed nomenclature used by Denson, Keefe, and Horn (1973).

GEOLOGIC MAP AND COAL DEPOSITS OF THE FOUR BAR J RANCH QUADRANGLE, CAMPBELL COUNTY, WYOMING

By  
G.L. Galyardt  
1980

This report has not been edited for conformity with Geological Survey editorial standards.