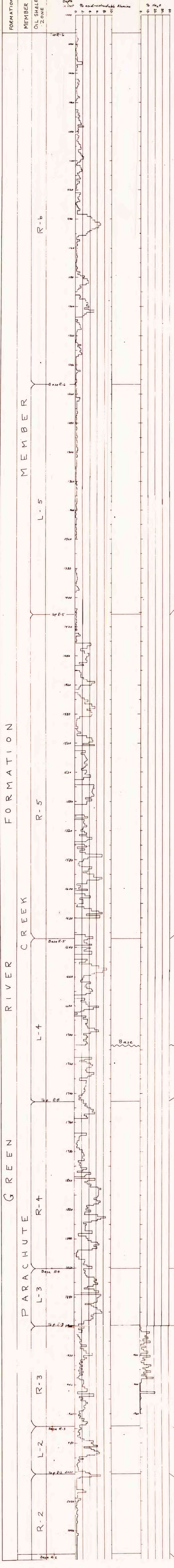


U.S. Geological Survey Corehole
 CR-2 (C-291)
 2650' FSL and 1300' FEL
 Sec. 36, T15, R. 97W
 Surface Elevation 6100'



U.S. Geological Survey Corehole
 CR-1 (C-293)
 2690' FSL and 235' WL
 Sec. 31, T15, R. 96W
 Surface Elevation 7135'

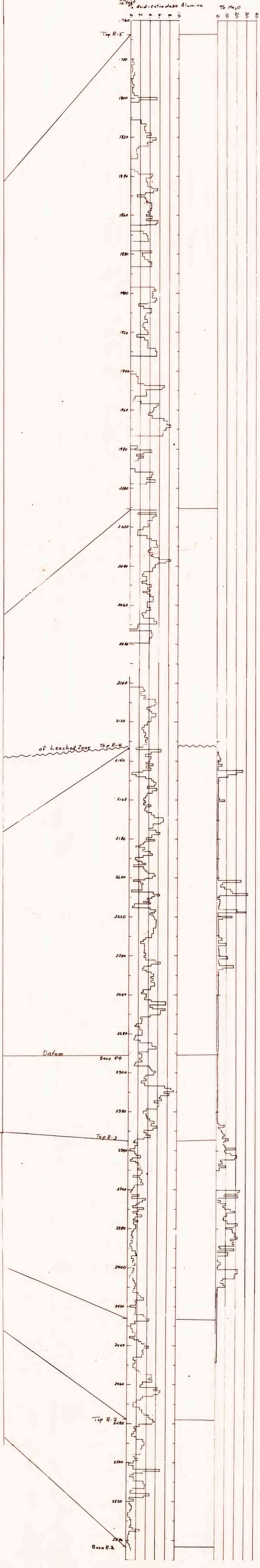


Figure 3. -- Histograms of Acid-Extractable Alumina and Water-Soluble Sodium from the Green River Formation in U.S.G.S. Coreholes CR-1 and CR-2, Rio Blanco County, Colorado.