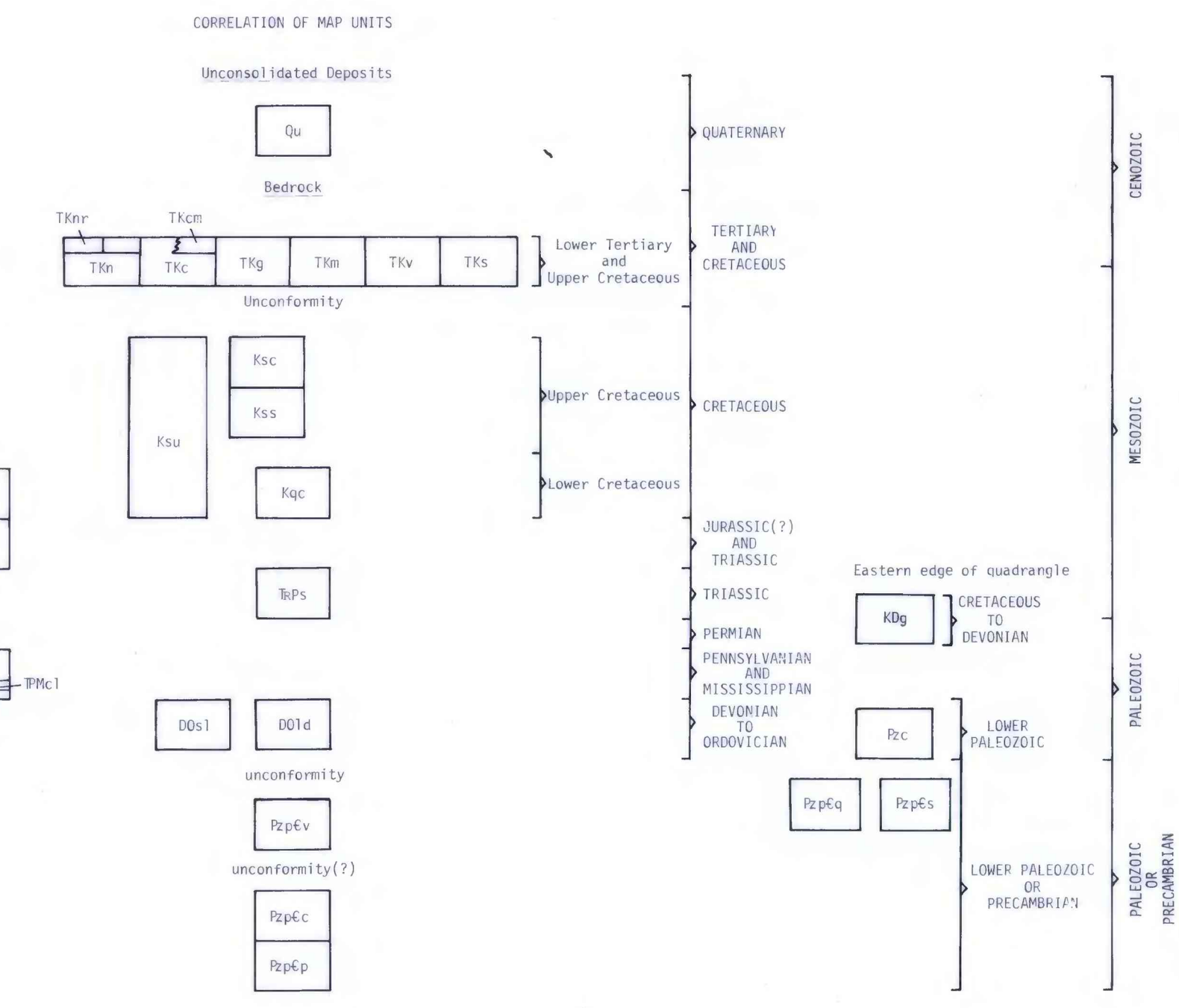
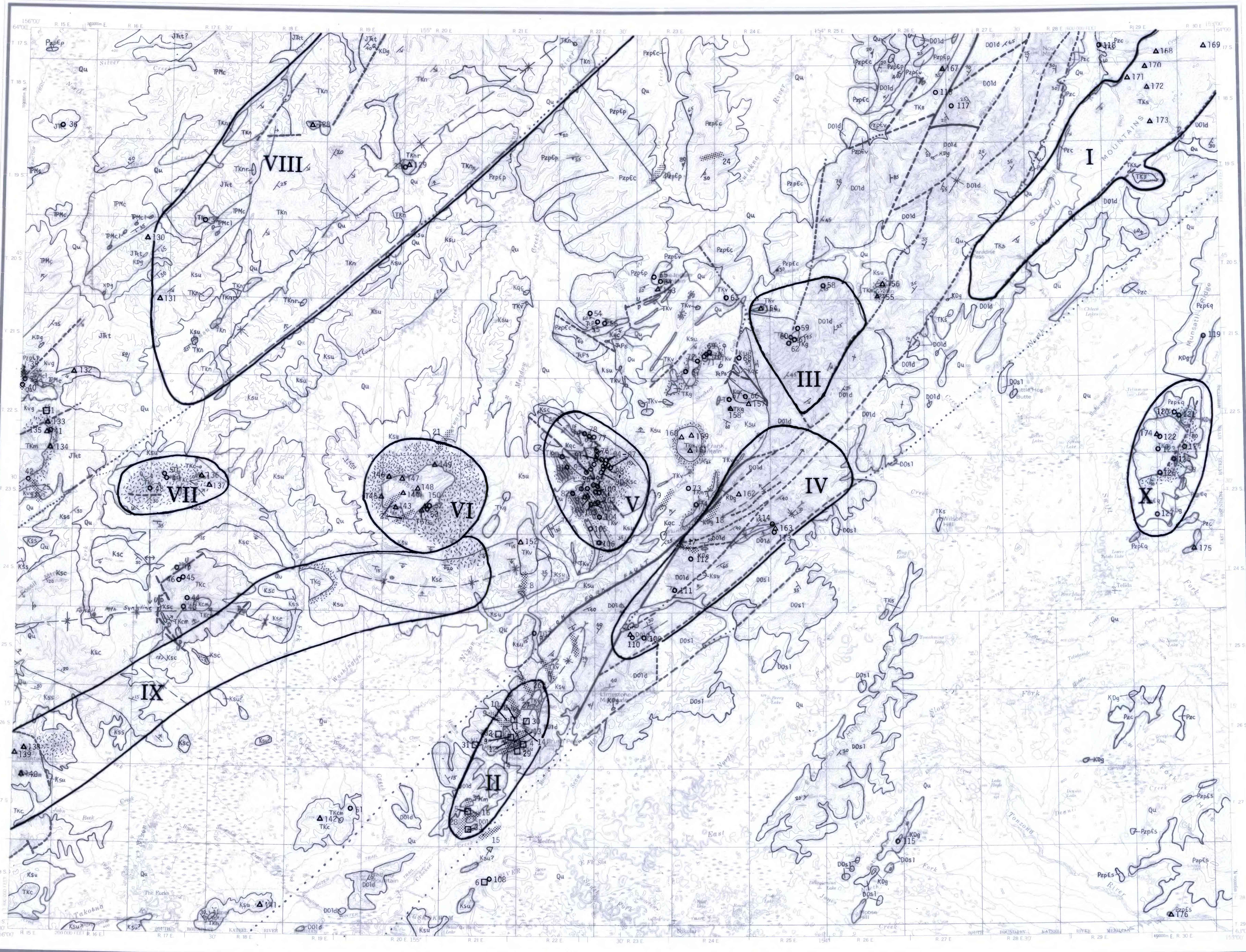


MEDFRA

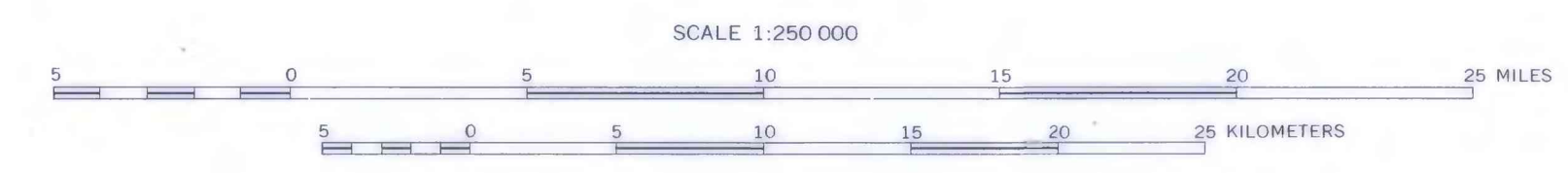
Explanation for Generalized Geologic Map



DESCRIPTION OF MAP UNITS

Qu	UNDIFFERENTIATED SURFICIAL DEPOSITS
TKm	VOLCANIC ROCKS OF THE NOMITNA RIVER AREA--chiefly trachyandesite, basaltic andesite, and basalt flows. TKm--Rhyolite domes, tuffs, and breccia
TKc	MAFIC TO INTERMEDIATE VOLCANIC-PLUTONIC COMPLEXES--Altered basalt, andesite, and trachyandesite flows and hypabyssal intrusive bodies. TKc--Small bodies of nonzoned, quartz monzonite, and granodiorite
TKg	GRANITE
TKn	MONZONITE
TKv	VOLCANIC ROCKS OF NIMON UPPER-SILING RIVER AREA--Rhyolite, dacite, and trachyandesite sills, dikes, flows, and plugs
TKs	VOLCANIC ROCKS OF THE SISOHI MOUNTAINS--Rhyolite and dacite flows and domes
KDg	GABBRO
Ksu	UNDIFFERENTIATED SHALE, SILTSTONE, AND SANDSTONE
Ksc	NONMARINE SANDSTONE AND QUARTZ-CHERT CONGLOMERATE
Kss	MARINE SANDSTONE, SILTSTONE, AND SHALE
Kqc	QUARTZ-CARBONATE SANDSTONE AND PEBBLY MUDSTONE
Kvg	VOLCANIC GRAYWACKE AND CONGLOMERATE
Jkt	CHERTY TUFF, CRYSTAL AND LITHIC TUFFS, AND VOLCANIC BRECCIA
Tps	SANDSTONE, SANDY LIMESTONE, SPICULITE, AND CONGLOMERATE
Ppc	CHERT AND LIMESTONE--Chiefly radiolarian chert. Ppc1--Limestone.
Dds1	SHALY LIMESTONE
Dds2	LIMESTONE AND EOLIMITE
Rc	CHERT AND PHYLITE
Rpq	QUARTZITE, GRIT, AND ARGILLITE
Rps	SHEARED GRIT, QUARTZITE, AND QUARTZ-MICA SCHIST
Rpe	METAVOLCANIC ROCKS--Metarhyolite and dacite
Rpf	CALC-SCHIST
Rpf	PELITIC SCHIST

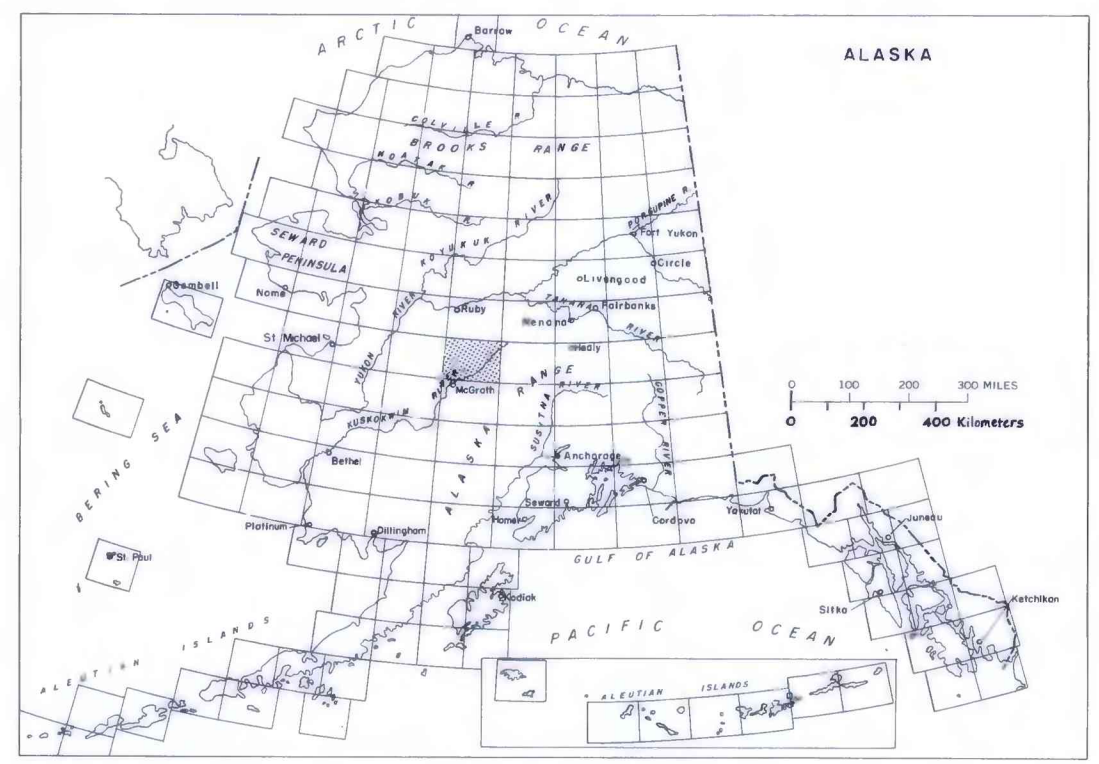
Base generalized geologic map of the Medfra Quadrangle, Alaska and U.S. Geological Survey 1:250,000 Alaska Topographic Series: Medfra, 1959.



MINERAL RESOURCE ASSESSMENT MAP OF THE
MEDFRA QUADRANGLE, ALASKA

by
W.W. Patton, Jr. and E. J. Moll

1983



Explanation for Mineral Resources Map

- is Location of stream placer showing general location on stream drainage
- Location of lode claim or mine
- Occurrence of sulfides and other indicators of mineralization
- △ Location of bedrock samples containing geochemical anomalies, but no visible mineralization
- VI Areas considered favorable for finding undiscovered mineral deposits

- GEOLOGIC SYMBOLS
- Contact - Includes approximately located, inferred, and indefinite
 - Fault - Dashed where approximately located, short dashed where inferred, dotted where concealed. L, upthrown side; D, downthrown side
 - Anticline - Showing direction of plunge
 - Syncline - Showing direction of plunge
 - Strike and dip of beds. May include overturned beds
 - Strike of vertical beds
 - Horizontal beds
 - Strike and dip of beds based on photointerpretation or distant observation
 - Strike and dip of foliation
 - Zone of hornfels

Contact between Pzpe and Pzpf mapped in part based on interpretation of aeromagnetic data (see Patton and others, 1982, Open-File Report 80-811G).