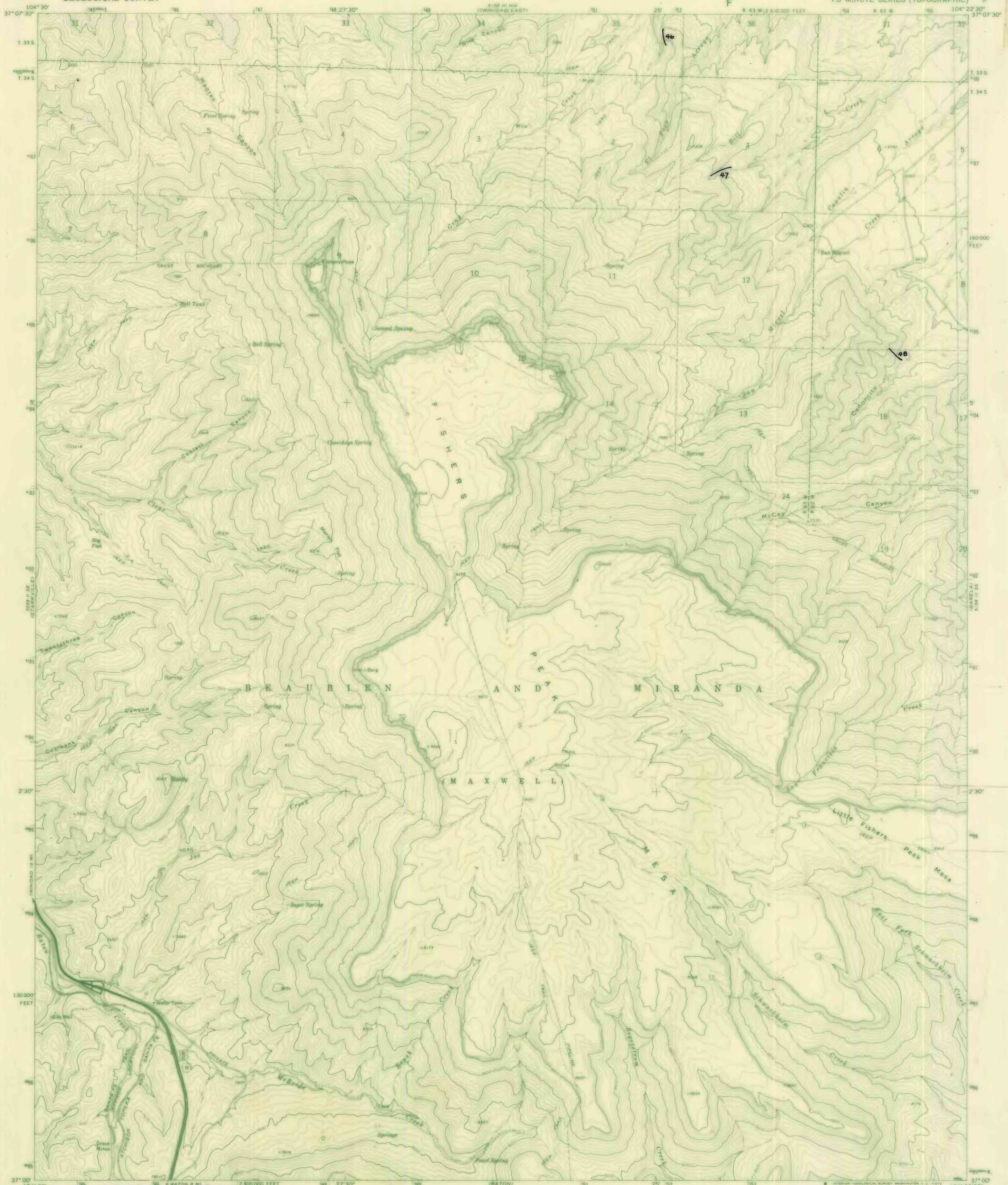


ADVANCE PROOF
SUBJECT TO CORRECTION
SCALE 1:24,000



Base from U.S. Geol. Survey, Fishers Peak, 1971
Mapped, edited, and published by the Geological Survey
Control by USGS and USC&GS
Topography by photogrammetric methods from aerial photographs taken 1969. Field checked 1971
Projection and 10,000-foot grid ticks: Colorado coordinate system, south zone (Lambert conformal conic) 1000-meter Universal Transverse Mercator grid ticks, zone 13, shown in blue. 1927 North American datum
Fine red dashed lines indicate selected fence lines

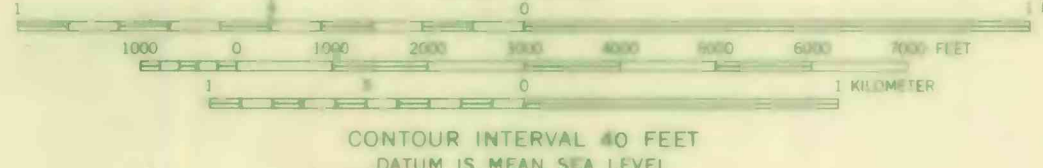
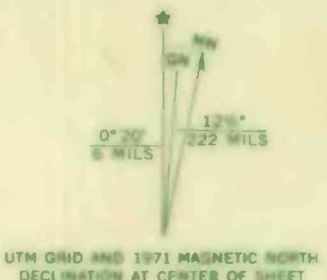


PLATE 4.--LOCALITIES OF MEASURED SECTIONS NUMBERED 46 THROUGH 48

THIS MAP COMPLIES WITH NATIONAL MAP ACCURACY STANDARDS
FOR SALE BY U. S. GEOLOGICAL SURVEY, DENVER, COLORADO 80225, OR WASHINGTON, D. C. 20242
A FOLDER DESCRIBING TOPOGRAPHIC MAPS AND SYMBOLS IS AVAILABLE ON REQUEST

ROAD CLASSIFICATION

| | |
|--------------------------------|--|
| Primary highway hard surface | Light-duty road hard or improved surface |
| Secondary highway hard surface | Unimproved road |
| Interstate Route | U S Route |
| | State Route |



FISHERS PEAK, COLO.
N3700-W10422.5/7.5
1971
AMS 5158 III SW--SERIES 8987

NOTE

This map was prepared as part of the U.S. Geological Survey's program for completing the topographic mapping of the United States. We wish to have the maps available for general distribution with the minimum of error. These proofs are sent for your review and comment. Please sign and return your marked copy within 10 days to address shown. If no comments, both copies may be retained for your use. Additional prints of this map are available at 15¢ each from the address shown.

CHIEF
ROCKY MOUNTAIN MAPPING CENTER
U.S. GEOLOGICAL SURVEY
BLDG. 29, FEDERAL CENTER
DENVER, COLORADO 80225
SIGNATURE _____
TITLE _____
ADDRESS _____

AMS 5158 III SW--SERIES 8987
(D) A-12 JG
BW