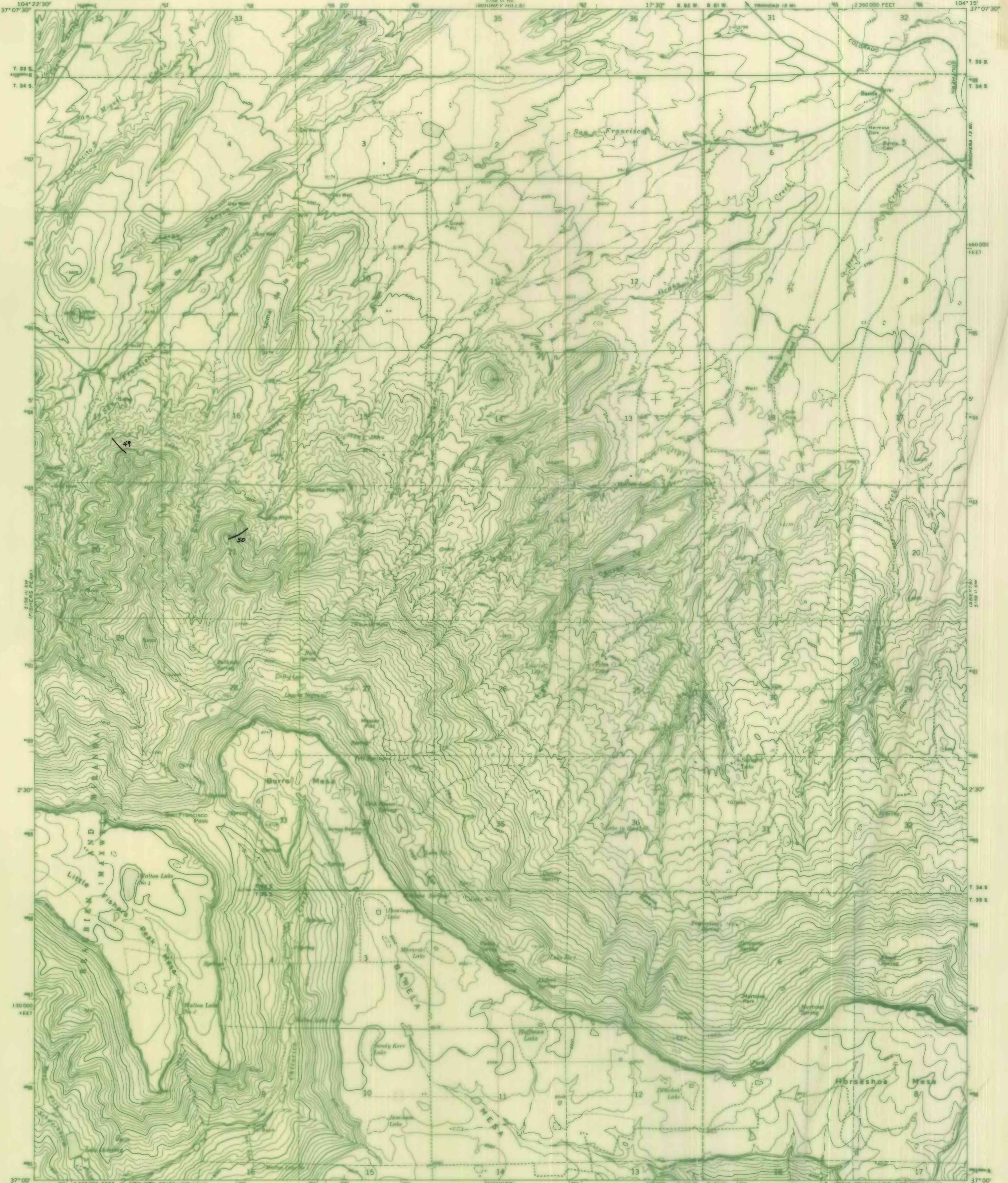


ADVANCE FROM
SUBJECT TO CORRECTION
SCALE 1:24,000
F



Base from U.S. Geol. Survey, Barela, 1971
Mapped, edited, and published by the Geological Survey

Control by USGS and USC&GS

Topography by photogrammetric methods from aerial
photographs taken 1969. Field checked 1971

Projection and 10,000-foot grid ticks: Colorado
coordinate system, south zone (transverse Mercator)
1000-meter Universal Transverse Mercator grid ticks,
zone 13, shown in blue. 1927 North American datum
Where omitted, land lines have not been established.
Fine red dashed lines indicate selected fence lines

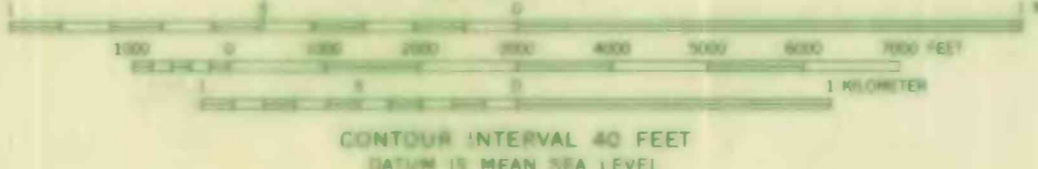


PLATE 5.-- LOCALITIES OF MEASURED SECTIONS NUMBERED 49 AND 50

THIS MAP COMPLIES WITH NATIONAL MAP ACCURACY STANDARDS
FOR SALE BY U.S. GEOLOGICAL SURVEY, DENVER, COLORADO 80225, OR WASHINGTON, D.C. 20542
A FOLDER DESCRIBING TOPOGRAPHIC MAPS AND SYMBOLS IS AVAILABLE ON REQUEST

NOTE

This map was prepared as part of the U.S. Geological Survey's program for completing
the topographic mapping of the United States. We wish to have the maps available for
general distribution with the minimum of errors. These proofs are sent for your review
and comment. Please sign and return your marked copy within 10 days to address shown.
If no comments, both copies may be retained for your use. Additional prints of this
map are available at 75¢ each from the address shown.



ROAD CLASSIFICATION

Primary highway, hard surface	Light-duty road, hard or improved surface
Secondary highway, hard surface	Unimproved road
○ Interstate Route	□ U.S. Route
	○ State Route

BARELA, COLO.
N3700-W10415/7.5
1971
AMS 5108 II, 8C--SERIES 9877

CHIEF,
ROCKY MOUNTAIN MAPPING CENTER
U.S. GEOLOGICAL SURVEY
BLDG. 25, FEDERAL CENTER
DENVER, COLORADO 80225
SIGNATURE _____
TITLE _____
ADDRESS _____