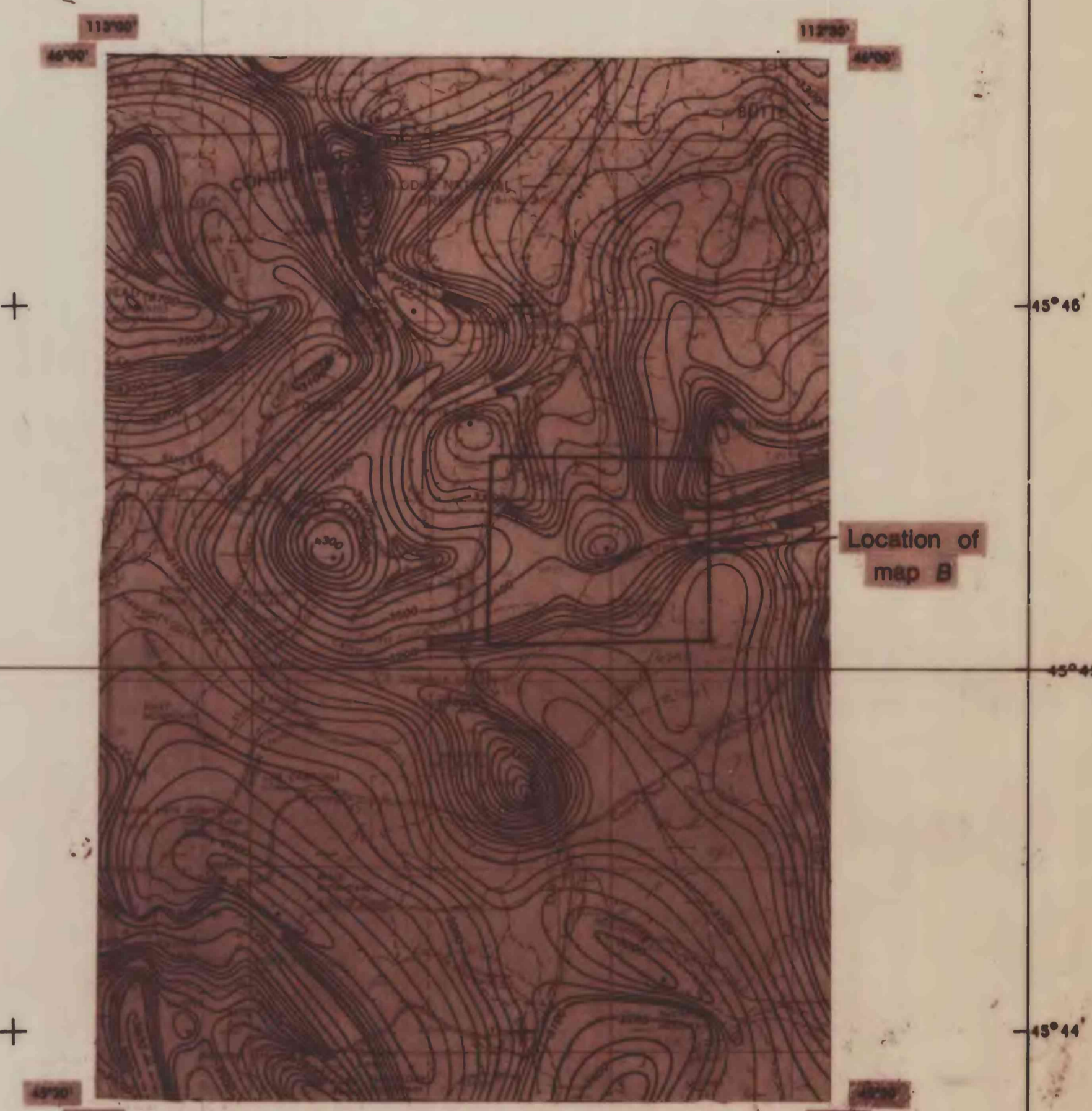


**B--DETAILED AEROMAGNETIC MAP OF THE HUMBUG SPIRES STUDY AREA**



**A--RECONNAISSANCE MAP OF THE BOULDER BATHOLITH REGION**  
Specifications: flight line spacing=2 mi (3.2 km); flight elevations 10,500 ft (3.2 km) above sea level; compilation scale=1:250,000; contour interval=20 and 100 gamma; flown by U.S. Geological Survey, 1953 and 1955.



**PLATE 2--AEROMAGNETIC MAPS OF THE HUMBUG SPIRES INSTANT STUDY AREA, SILVER BOW COUNTY, MONTANA**

**GEOLOGY AND MINERAL RESOURCES OF THE HUMBUG SPIRES INSTANT WILDERNESS STUDY AREA, SILVER BOW COUNTY, MONTANA**