

T. 3 S., R. 6 W., W.M.  
Secs. 15 & 22

EXPLANATION

Qal  
Alluvium

Qt  
Soil

Hillwash and talus, generally about 1.5 to 3 meters thick; this unit shown only on the cross-sections

Tg

Gabbroic Intrusive  
Similar texturally and mineralogically to sill at Bald Mtn. and to extensive gabbroic rocks present to the north. Outcrops shaded

Tts

Tuffaceous siltstone and shale; weathers to clayey masses, flakes when dry. Outcrops shaded

Ttb

Basalt flow  
Outcrops shaded

Ttt

Tuffaceous siltstone  
Carbonaceous in TH-2; similar in outcrop to Tts. Outcrops shaded

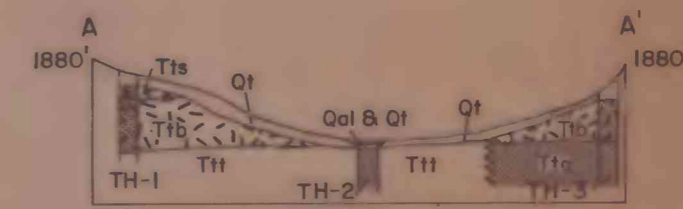
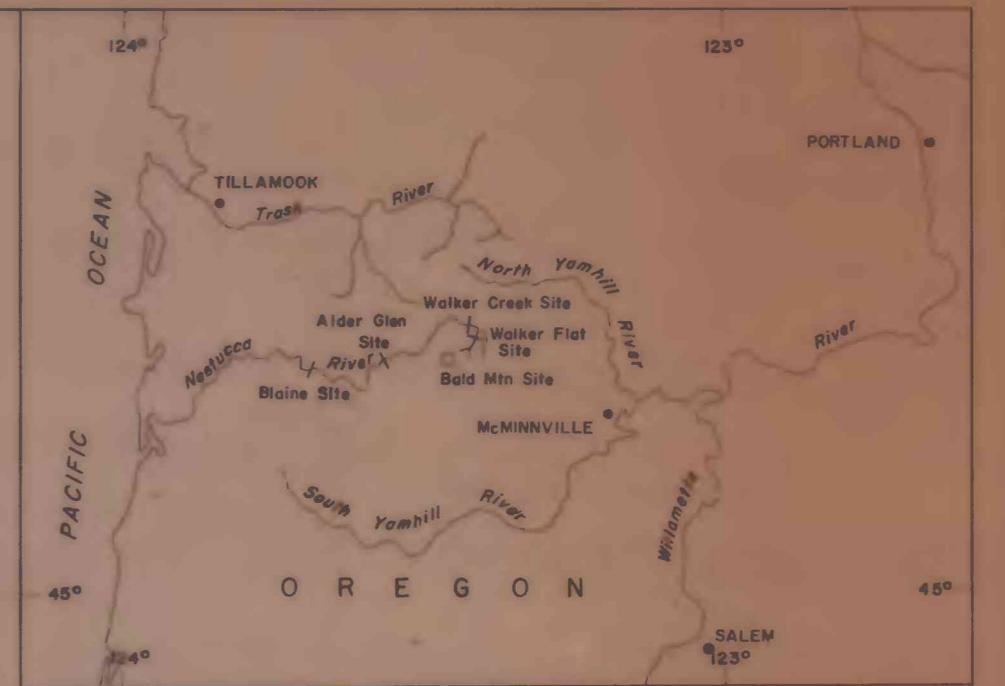
Tta

Basalt flow  
Exposed only in sub-surface at TH-3

Contact  
Dashed where approximately located; short dashed where inferred; dotted where concealed

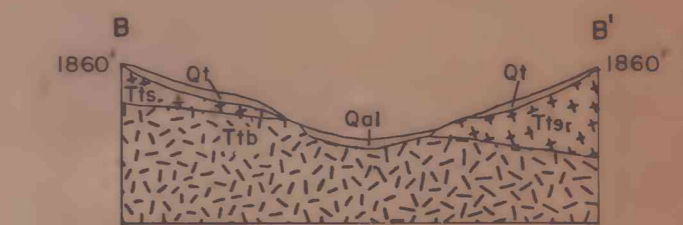
TH  
Test Holes  
See figure 17 for descriptions

TP  
Test Pits



Section A-A'  
Near axis of Walker Flat Damsite

Vertical and Horizontal scale  
0 100'

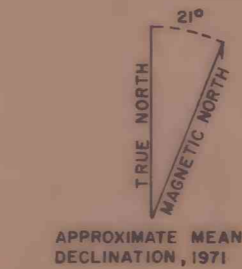
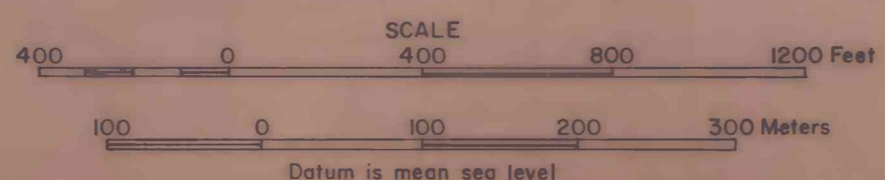


Section B-B'  
Near axis of Walker Creek Damsite

Vertical and Horizontal scale  
0 100'

Topography and planimetry from aerial photographs, by Kelsh Stereo Plotter method, U.S. Bureau of Land Management Projection based on State Plane Coordinate System North Zone Photography 1962. Project symbol S8-TIL Horizontal Control U.S.C. & G.S., U.S.G.S. and B.L.M. Vertical Control by B.L.M. using precise Barometric Altimetry This map has not been edited for conformity with U.S. Geological Survey editorial standards or stratigraphic nomenclature

GEOLOGIC MAP OF  
WALKER CREEK AND WALKER FLAT DAMSITES, OREGON



This report has not been edited for conformity with U.S. Geological Survey editorial standards or stratigraphic nomenclature.

Geology by J.L. Renner, 1976