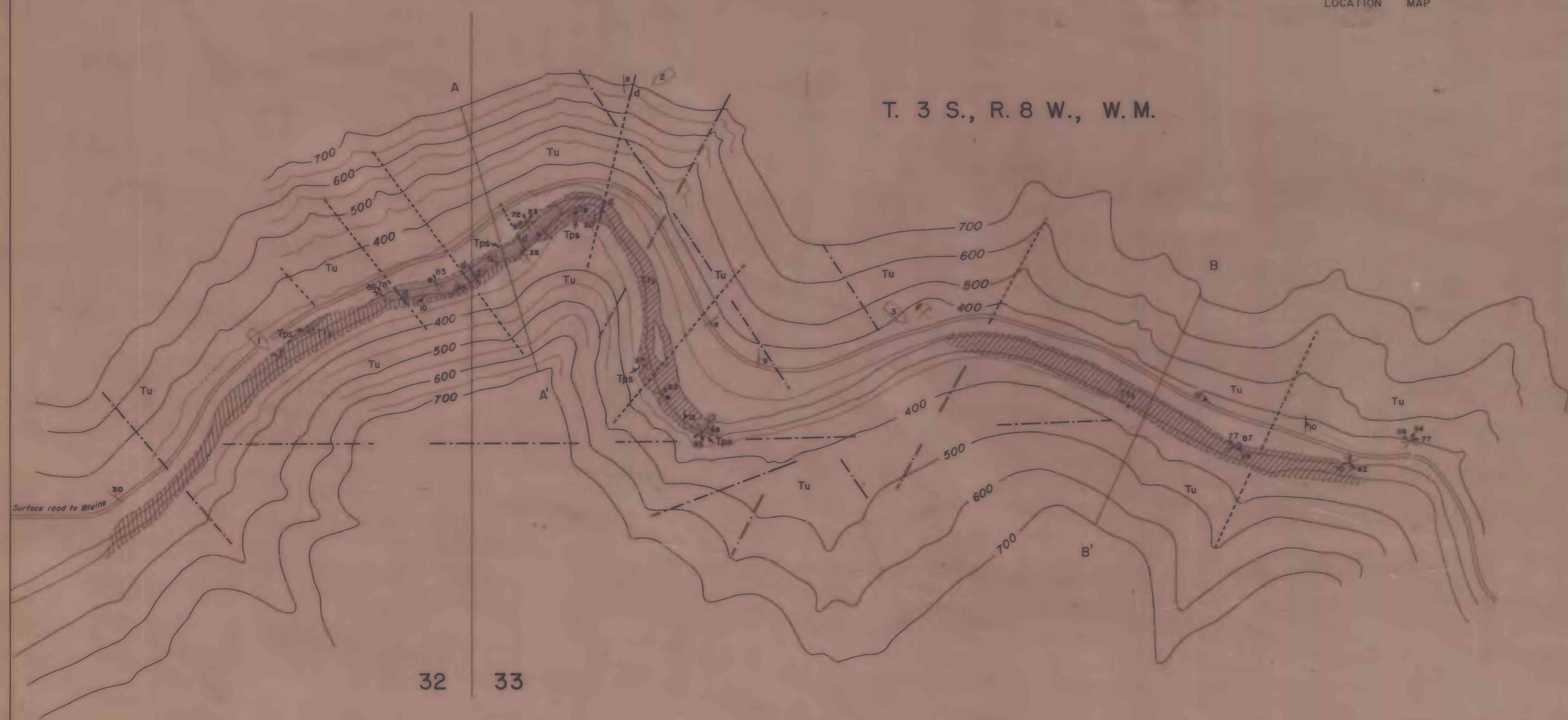


- EXPLANATION**
- Topographic lineation observed on aerial photographs. May represent concealed fracture zone
  - Inferred fault or shear zone
  - 12  
Strike and dip of pyroclastic or sedimentary strata
  - 10  
Approximate strike and dip of lava flows and sills
  - 68 87  
75  
Strikes and dips of multiple joints
  - 9  
Basaltic dike
  - Contact
  - Solid in cross section
  - Quarry
  - Locality referred to in report

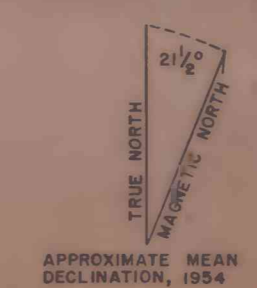
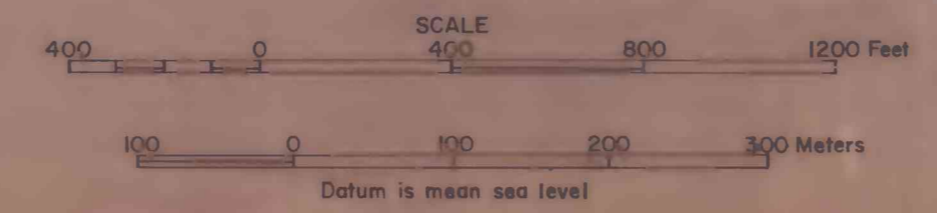
T. 3 S., R. 8 W., W.M.



- TERTIARY**
- Tf  
Mafic lava flows and sills
  - Tps  
Pyroclastic and sedimentary rocks
  - Tu  
Undifferentiated igneous and sedimentary rocks; generally concealed by colluvium on forested slopes; with few bedrock outcrops
- Eocene and Miocene**

Mapped, edited, and published by the Geological Survey  
Control by USGS and USC & GS  
Topography from aerial photographs by Kelsh plotter  
Aerial photographs taken 1953. Field check 1955  
Prepared on polyconic projection. 1927 North American datum  
Grid line not shown  
All crosses (X) are planetable bench marks except those marked B.M.  
This map has not been edited for conformity with U.S. Geological Survey editorial standards or stratigraphic nomenclature

**GEOLOGIC MAP OF THE BLAINE DAMSITE, OREGON**



This report has not been edited for conformity with U.S. Geological Survey editorial standards or stratigraphic nomenclature.

Geology by David L. Gaskill, 1957  
Map revised 1976