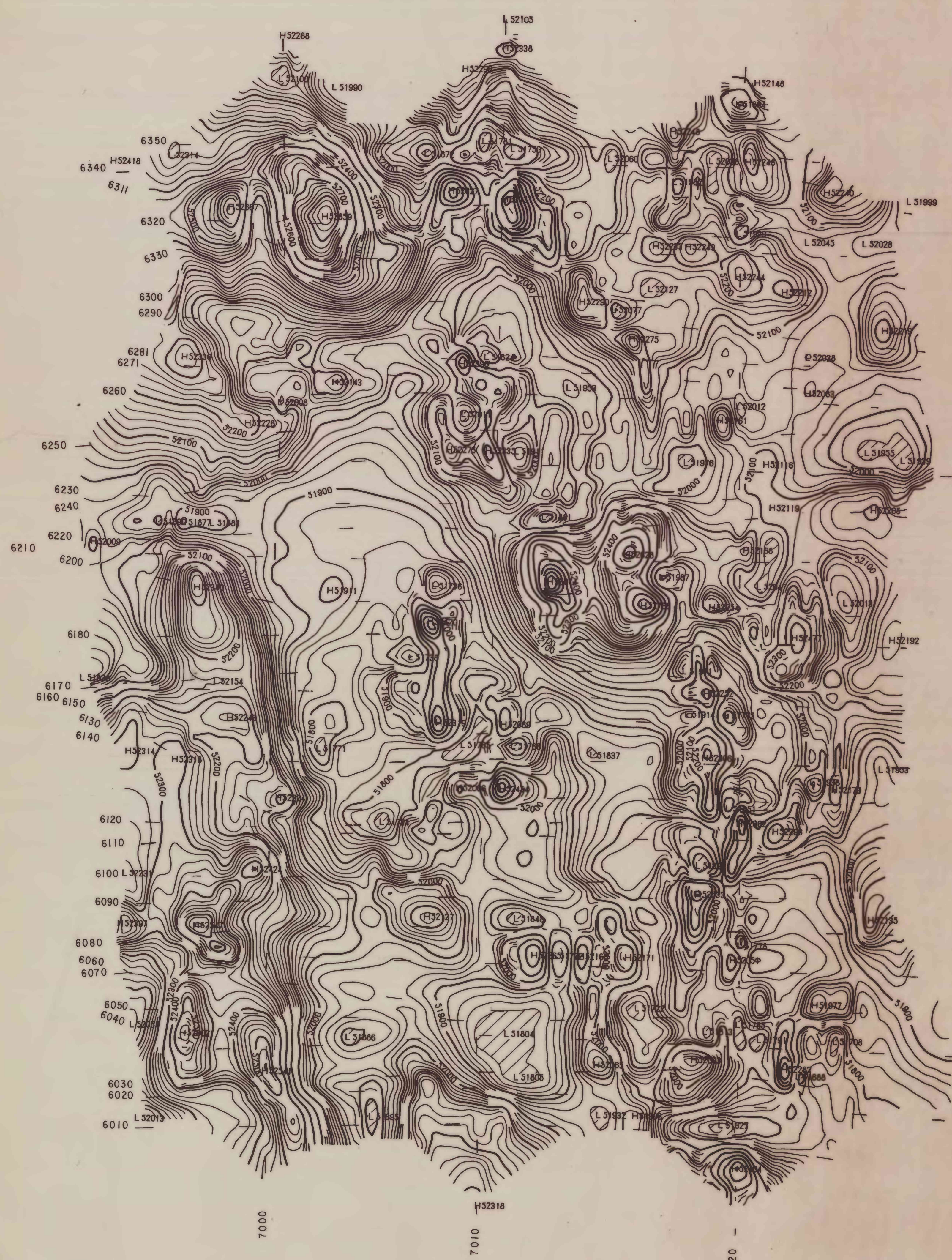


120°30'

120°00'
39°22'30"



AEROMAGNETIC MAP OF THE GRANITE CHIEF AREA, CALIFORNIA

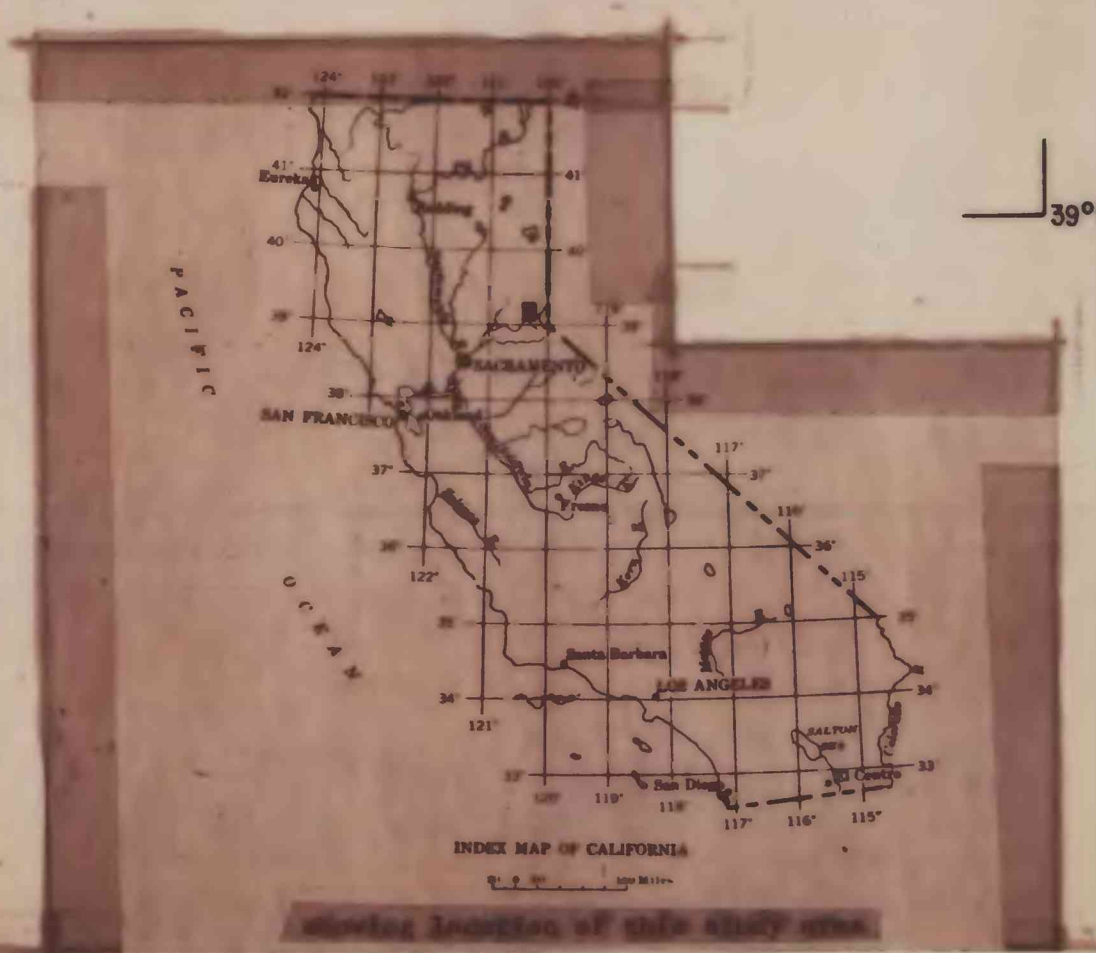
BY
U.S. GEOLOGICAL SURVEY

1960

FLIGHT ALTITUDE 1000' TERRAIN CLEARANCE
 TRAVERSE 1/2 MILE E/W, TIE LINE 5 MILE N/S
 TYPE OF SENSOR VARIAN CESIUM VAPOR MAGNETOMETER
 SAMPLE RATE AND SENSITIVITY 152 FEET 02 GAMMA
 REGIONAL FIELD 1975 I.G.R.F. UPDATED TO 1975.85
 CONTOUR INTERVAL 20 AND 100 GAMMA/10 GAMMA SUPPLEMENT
 CONTOUR GRID INTERVAL 100 METERS + 200 METERS
 CONSTANT VALUE ADDED TO FINAL DATA 52454.0 GAMMA
 TOTAL INTENSITY VALUE BEFORE REMOVAL OF THE I.G.R.F. 51950 SW CORNER
 PROJECTION UTM, CLARKE (1866), ZONE 5
 SURVEYED AND COMPILED NOVEMBER 1979
 A.S. PROJECT 0665
 U.S.G.S. CONTRACT NO. 14-08-0001-17940

Flown and compiled by:
AERO SERVICE
 Houston, Texas 77001
 under contract to the
 U.S. Geological Survey

This map is preliminary and has not been edited or reviewed for conformity to Geological Survey standards.
 The use of brand names is for descriptive purposes only and does not necessarily constitute endorsement by the U.S. Geological Survey.



39°00'